



Integrity Services

**Diagnostics you
can count on.
Guidance you
can trust.**

ID	Distance	Type	Dis. 100%	Dis. 200%	Dis. 50%	RFI	Quality	Unit
500250			7.784 m	4.351 m			5.7 mm	

Overview

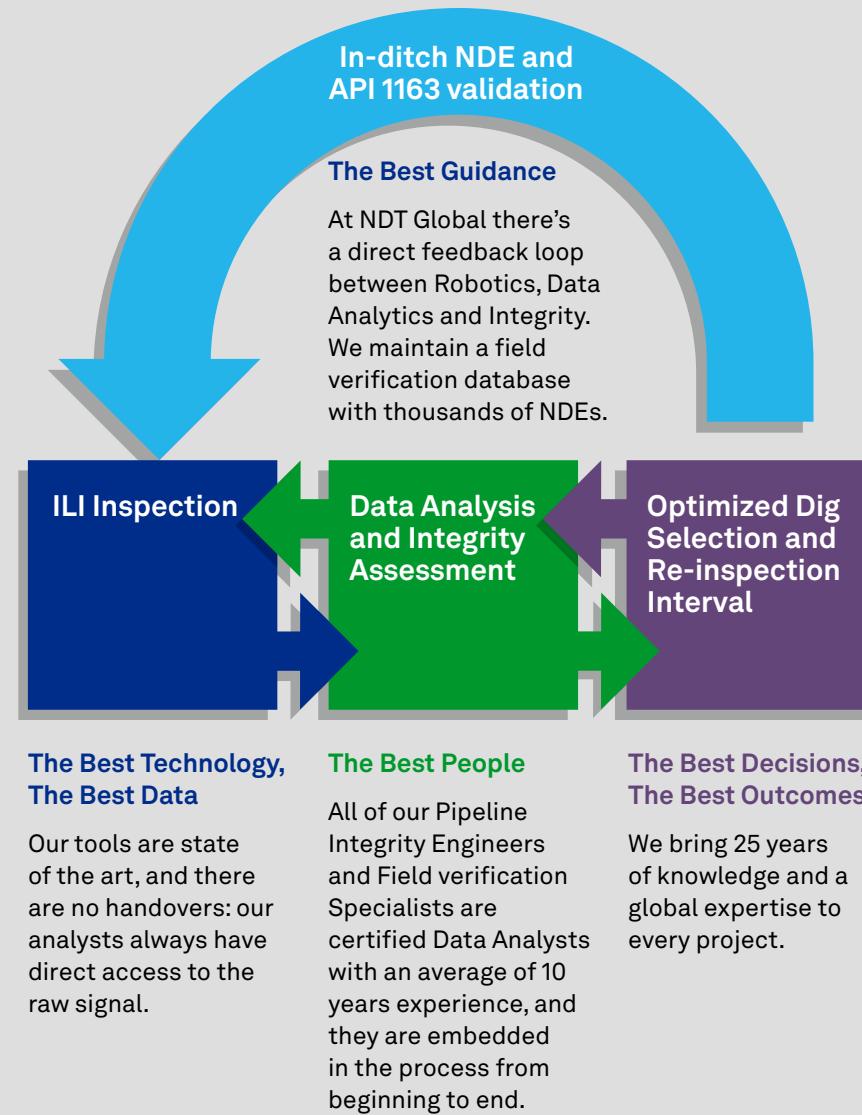
From the Best Data, to the Most Confident Decisions.

As a pipeline operator, your priority is clear: minimize unnecessary digs, service disruptions, and risk exposure. But disjointed processes, third-party data transfers, and unfamiliar software can lead to costly delays, inaccurate inputs, and false digs.

With NDT Global, you can avoid these challenges. Our fully integrated approach — from inspection to dig validation — provides precise, purpose-driven inputs you can trust.

Our experts are deeply embedded in the inline inspection and data analysis process, with direct access to raw data and a thorough understanding of tool performance and data collection. Our proximity to the diagnostic process ensures the highest degree of accuracy — helping you save time, reduce risk, and maintain uninterrupted operations.

At NDT Global, we deliver clarity and confidence, so you can focus on achieving the best outcomes for your pipeline integrity.



Overview

Integrity Assessment

Fitness-For-Purpose

Detailed assessment of your pipeline's integrity and capacity to thrive under current and future operating conditions.

Immediate Integrity Assessment

Effectively translate Inline Inspection (ILI) reports into clear, actionable mitigation and repair needs. Fully utilize ILI data from crack, metal loss, or ultrasonic geometry inspections to avoid unnecessary digs, minimize digs, and select only the best digs.

Lamination Assessment

With NDT Global's unique Lamination assessment, you can obtain a definitive dig plan, leveraging state-of-the-art assessment methods and advanced analytics, that enables you to avoid unnecessary digs based on a quantitative ranking. While Lamination is unique to us, it is not the only assessment offered by NDT Global; we provide tailored solutions for diverse inspection needs.

Future Integrity and Fatigue Life Assessment

Gain a comprehensive, detailed understanding of your pipeline's remaining life to establish optimal re-inspection intervals.

Run Comparison and Feature Growth Assessment

Compare feature signals and patterns across multiple ILI inspections to accurately measure and understand growth over time.

Finite Element Assessment

Benefit from the most accurate estimate of failure pressures, leveraging state-of-the-art industry practices.

Pipeline Movement Assessment

Prioritize repairs appropriately with insight into 'potential-to-fail' areas due to external forces.

Dent Assessment

Obtain the most accurate input related to deformations and localized strain.

Dent Profile Characterization

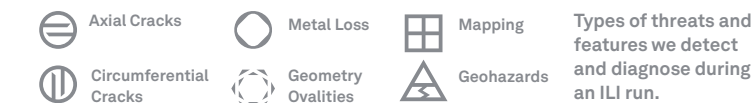
Evaluate potential dangers posed by dents, together with their potential for damage on a scale of zero to pipeline failure.

Cracks in Dents Diagnosis

Assess the quantitative probabilities for various interacting threats within dents, utilizing a systematic methodology to effectively leverage inline inspection data.

Integrity Advisory Services

Minimize risk and enhance performance for today's needs and tomorrow's challenges. With expert guidance from NDT Global and proactive, holistic advisory services in partnership with our Dynamic Risk team, you can make well-informed decisions that drive exceptional safety, productivity, and operational success.

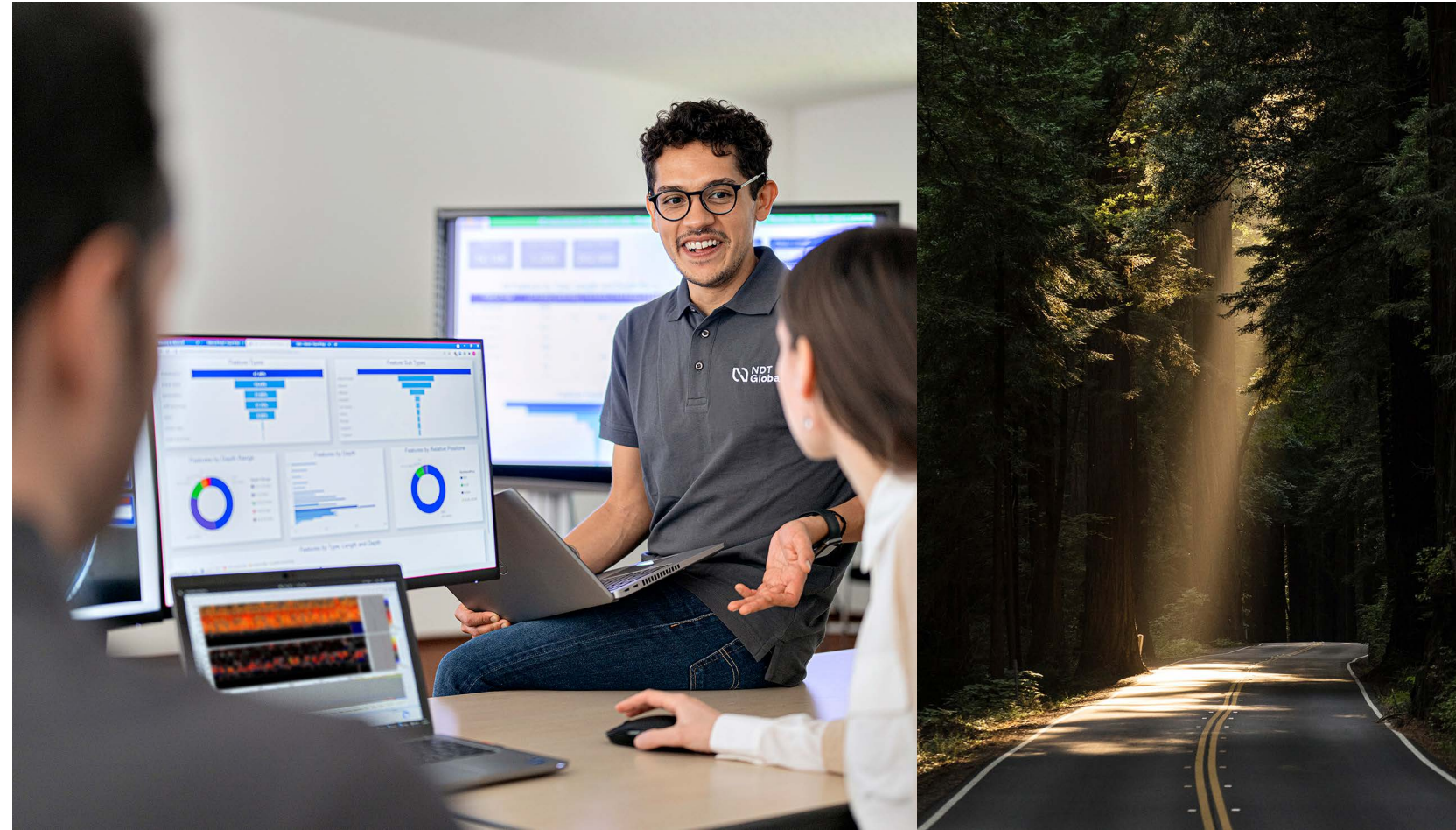


Overview

Insights You Can Action

Inline inspections capture vast quantities of information about pipeline health. But how can you turn what might be terabytes of raw ILI data into effective, real-world strategies? Simply put, by leveraging NDT Global's industry-leading integrity services. With advanced analytical tools and unparalleled expertise, we transform raw inspection data into actionable insights. Our integrity services help operators like you prioritize repairs, optimize maintenance, and make informed decisions that ensure the safety and longevity of your assets. Our seamless solutions are designed to simplify your integrity management process.

It's why we innovate and engineer the highest-performance ultrasonic inspection tools and technologies — and why we deploy them in the hands of specially trained professionals. To ensure early detection of potential issues, enhance your maintenance strategies, and guide you in prioritizing integrity measures. Because the integrity of your pipeline depends, first and foremost, on the integrity of our data.



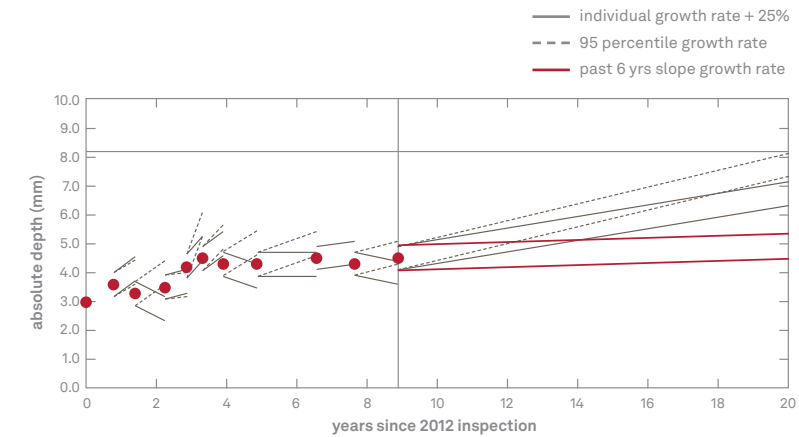
Overview

From Precision to Assurance

With data in hand, the analysis begins. Our Integrity Services team is composed of certified Pipeline Integrity Engineers and Field Verification Specialists, who are also certified data analysts. This exceptional combination of training and expertise enables us to deliver uniquely qualified insights that you can trust to inform the best decisions for managing your pipeline.

NDT Global is recognized for consistently delivering both on time and on target. Utilizing advanced software and algorithms, we meticulously yet efficiently analyze data for potential threats such as corrosion, cracks, deformations, laminations, and other anomalies — providing you with a prompt and thorough evaluation uniquely tailored to your needs.

Our reports are customized to meet the specific objectives and constraints of your integrity management program. We work in partnership with you, collaborating closely to develop bespoke assessment strategies that make the most of the very best diagnostic data — to give you the Power of Clarity™ in safeguarding your pipeline assets.



Example of accurate corrosion growth assessment



Assessments

Fitness-For-Purpose (FFP) Assessment

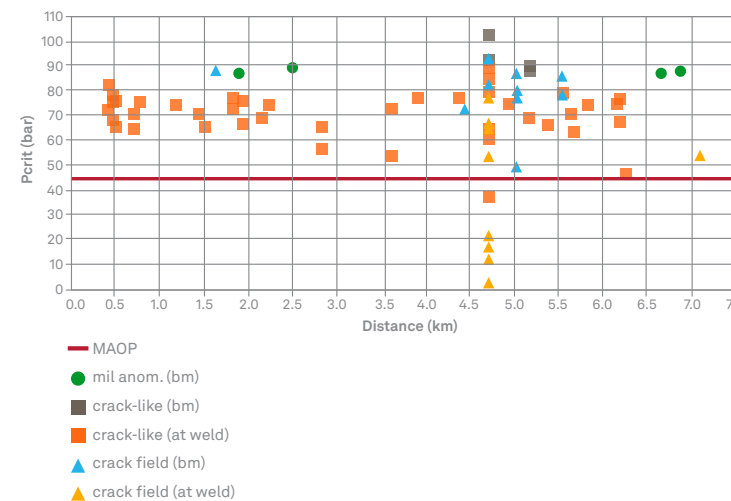
A detailed FFP study is an essential component of any integrity management plan — and NDT Global's FFP assessment is one of the most comprehensive anywhere in the industry. Leveraging both the latest and established ultrasonic inspection technologies, our FFP assessment provides granular insights into your pipeline's condition under both current and anticipated operating conditions.

We produce an extensive report with millimeter-level accuracy, providing you with an in-depth overview of your pipeline's overall

condition, including potential features such as metal loss, cracks, dents, laminations, and other anomalies. Upon completion of the assessment, we deliver a further technical report detailing the evaluation parameters, characteristics, dimensions of identified anomalies, methods used, results, conclusions, and recommendations. All our reports are customized for your needs, and tightly adhere to global standards and recommended practices, such as API, ASME, British Standard, DNV Standards, POF, and PDAM.

Immediate Integrity Assessment

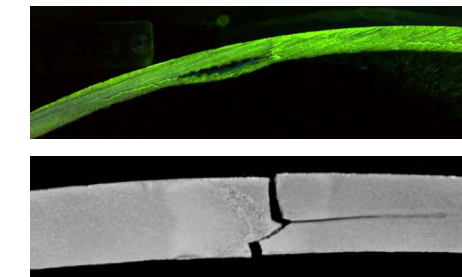
Following an ILI run, our Pipeline Integrity Engineers analyze the data to identify pipeline areas with the greatest risk of failure, to help you prioritize digs and comply with regulatory deadlines. Maintaining the precision and accuracy of data throughout helps minimize unnecessary digs while ensuring injurious anomalies are not left unattended.



Assessments

Lamination Assessment

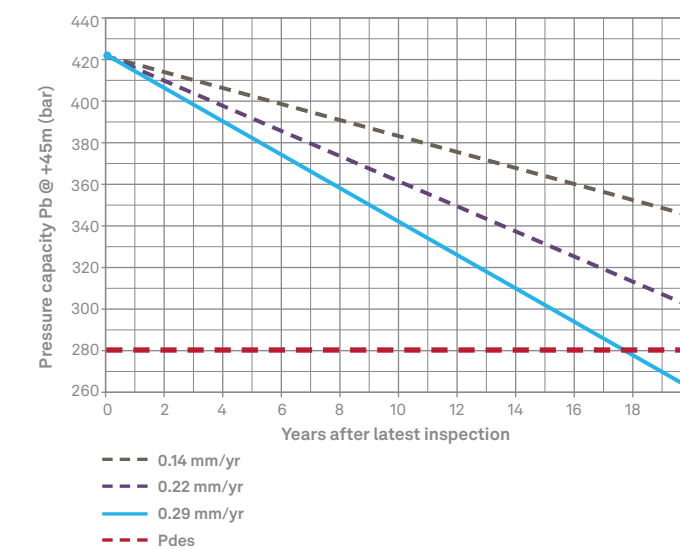
Laminations can pose a significant risk to pipeline integrity. Our Lamination Assessment provides an in-depth analysis of such features, distinguishing between those that require repair and those that do not. The assessment includes a comprehensive report detailing the types of laminations detected and recommendations based on current operating conditions — so you can plan accordingly while maintaining safe, efficient operations.



Examples of two potentially injurious lamination faults: bulging and through-thickness propagation near welds.

Future Integrity and Fatigue Life Assessment

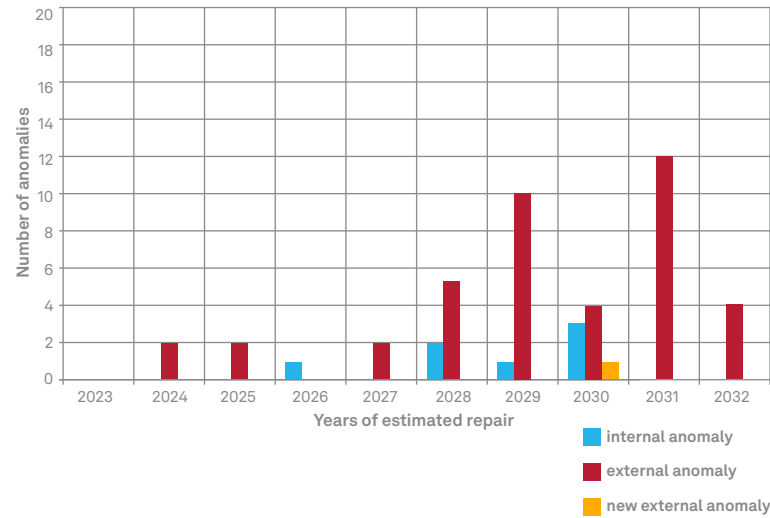
Understanding and predicting asset lifespan is crucial for safeguarding pipeline assets. Our assessments identify potential threats and provide insights to extend the system's lifecycle. Using signal inspection data, our engineers analyze potential issues such as cracks, dents, and corrosion, predicting when they might become critical. This empowers you to determine optimal re-inspection intervals and make informed maintenance decisions — with full confidence.



Assessments

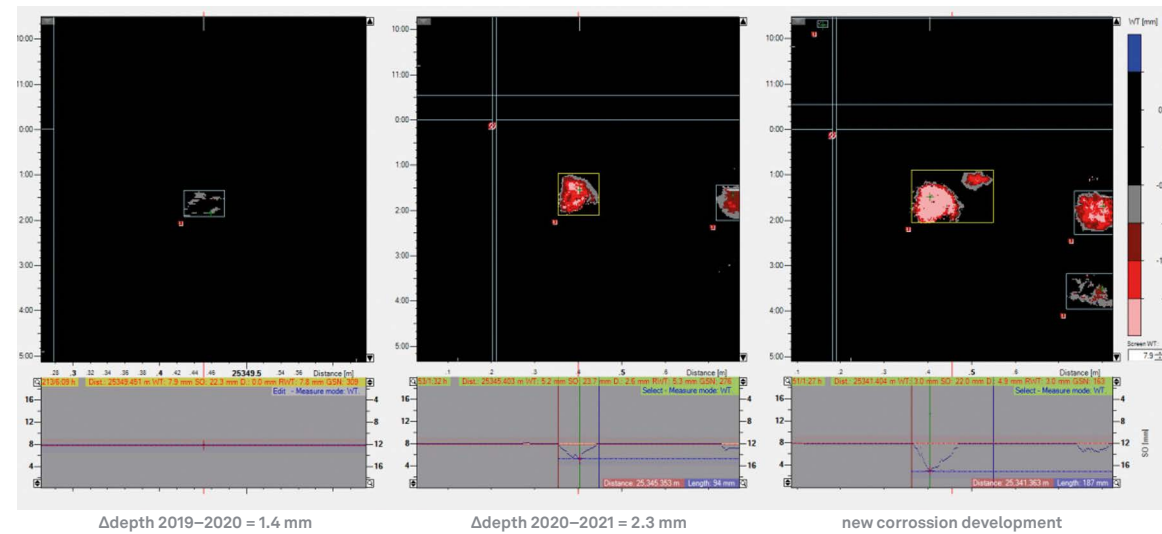
Future Integrity and Fatigue Life Assessment

Understanding and predicting asset lifespan is crucial for safeguarding pipeline assets. Our assessments identify potential threats and provide insights to extend the system's lifecycle. Using signal inspection data, our engineers analyze potential issues such as cracks, dents, and corrosion, predicting when they might become critical. This empowers you to determine optimal re-inspection intervals and make informed maintenance decisions — with full confidence.



Run Comparison and Feature Growth Assessment

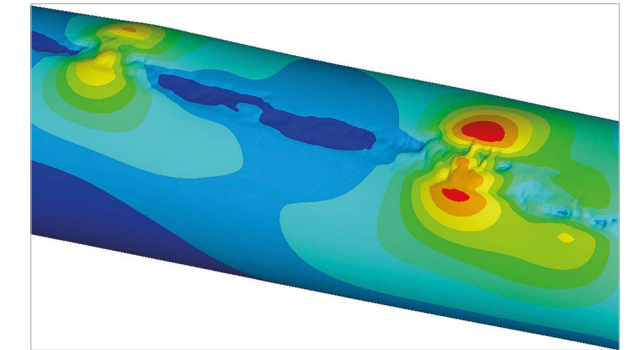
Analyzing data from multiple inspections enables us to assess the growth of corrosion or crack features over time. The resulting detailed signal-to-signal comparison ensures accurate depth sizing and accounts for potential biases, such as technology type and tool resolution. Armed with the best data, our experts are able to accurately calculate and predictively model feature growth, providing you with critical insights into your pipeline's remaining lifespan, and informing future integrity assessments.



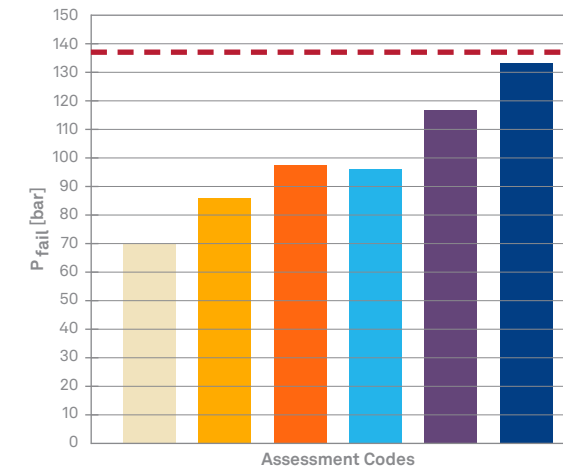
Assessments

Finite Element Assessment (FEA)

Conventional methods of estimating failure pressures can be excessively conservative. NDT Global's Finite Element Assessment delivers a more accurate, representative, and reliable picture. Our experts leverage advanced 3D geometry mapping to assesses combined anomalies, producing a detailed report with high-resolution data. The resulting FEA assessment provides a predictive 3D model that is clear, comprehensive — and right on target.

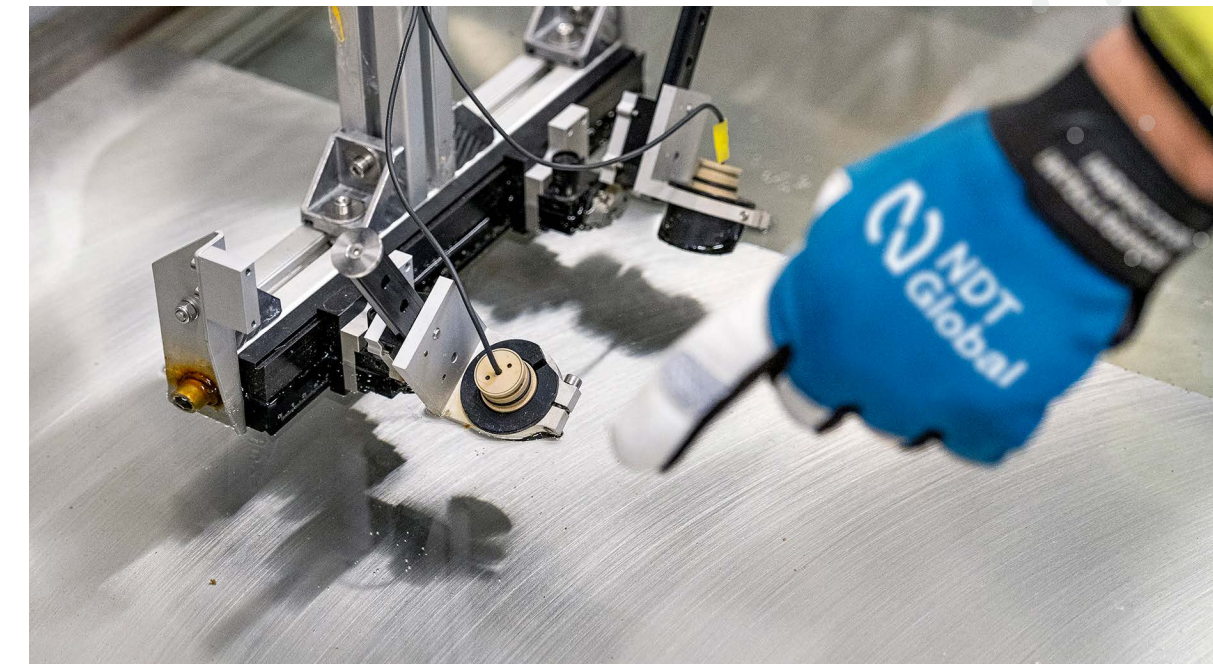


Example of FEA analysis

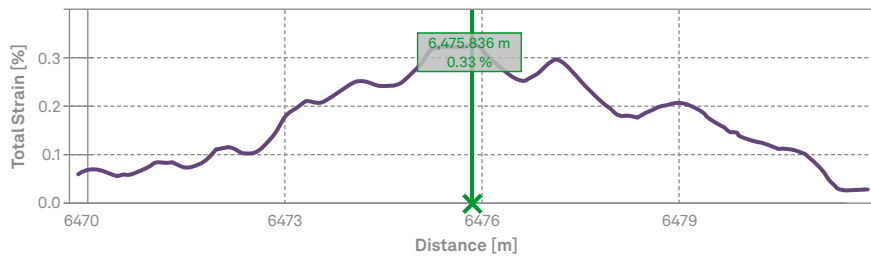
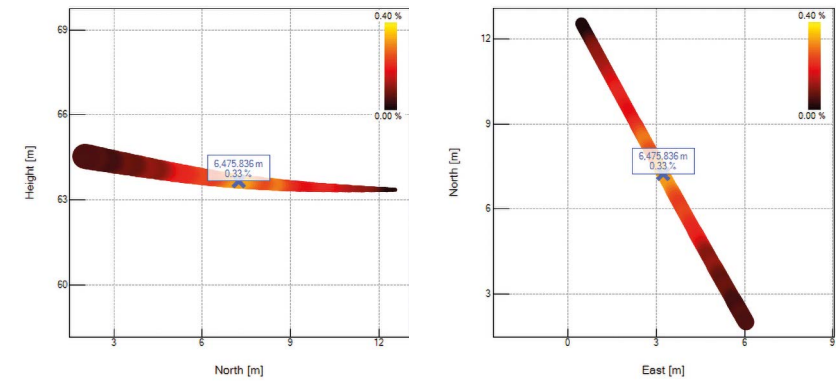


Comparison of different assessment methods

- ASME B31G
- ASME modified
- DNV-RP-F101 Part B Single Defect
- RSTRNG Effective Area
- DNV-RP-F101 Part B Complex Defect
- non-linear FEM
- measured burst pressure



Pipeline Movement Assessment



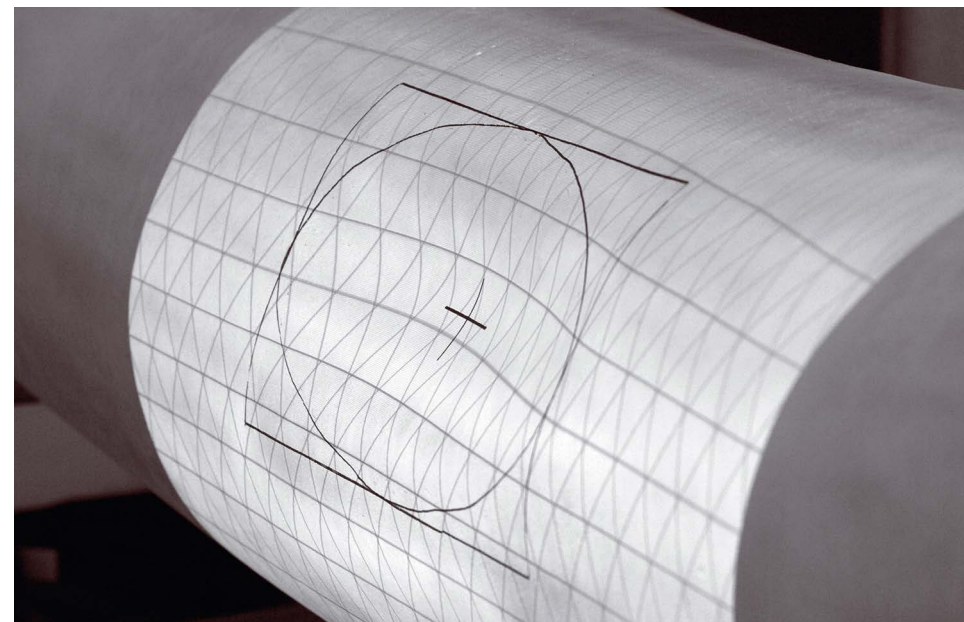
NDT Global aligns two inspections to detect slight changes ($\geq 0.10\%$) in the strain over time, and accurately pinpoint pipeline movement locations

Pipeline movement can be caused by various factors, such as elevation changes or third-party interference, and can strain your assets beyond the limits of their design. Our Pipeline Movement Assessment uses cutting-edge inspection tools to gather highly accurate GPS data that drives acute insights as to precise locations experiencing higher-than-expected strain. Regular assessments enable us to monitor feature growth and predict the likelihood of asset failure, empowering you to make informed remediation decisions at the right time.

Dent Assessments

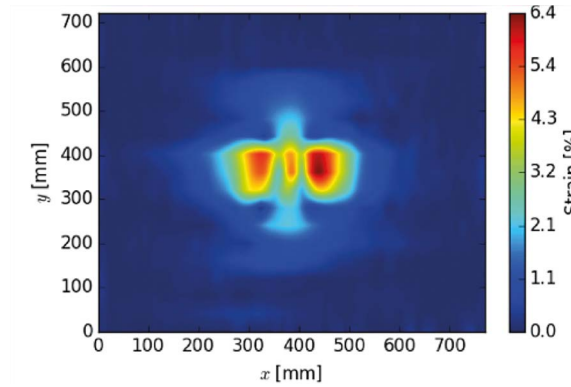
NDT Global's advanced technology uses localized strain assessment to provide a more relevant and accurate measure of dent severity than traditional depth-based approaches. With our specialized tools and software, we calculate membrane and bending strains to deliver precise inner and outer strain values, offering a comprehensive assessment of dent severity — for your information, and peace of mind.

Below Ditch grid for deformation found by ILI (EVO Geometry)



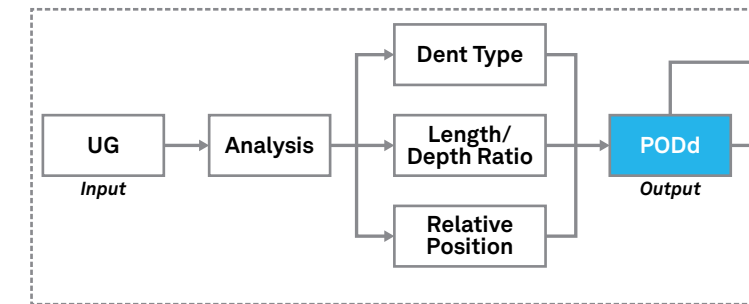
Dent Profile Characterization and Cracks in Dents Diagnosis

Accurate dent profile characterization is essential for assessing potential risks. Using EVO Geometry's direct measurement method, we provide precise axial and circumferential profiles without altering the dent profile in the process. What's more, our Cracks in Dents Diagnosis methodology defines quantitative probabilities for interacting threats within dents, enabling you to remain compliant with federal regulations while actioning timely remediation.

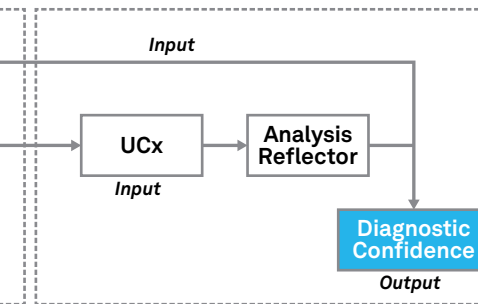


Top right Combined strain components in a deformed pipe

Part 1: Only UG data is required



Part 2: UG & UCx data is required



Crack in dent workflow



Ensuring Long-term Pipeline Operations

At NDT Global, our singular focus is on you, the customer. We continually invest in our people and technology — pushing the boundaries of science and innovation, to ensure you always benefit from the best expertise, combined with the best data, for the best insights. Our Integrity Consulting Services have been designed to both complement and seamlessly integrate with our ILI services, offering end-to-end solutions that meet your specific needs and expectations — with the Power of Clarity.

Guidance You Can Trust

Not even the most accurate assessment comprises a total solution. The purpose of thoughtful analysis is to inform a practical response or strategic playbook. That's why NDT Global's Integrity Services extend beyond the assessment, to expert guidance and collaborative planning. We provide comprehensive NDE Level III consulting and API 1163 ILI validation reports — connecting

back through the Data Analysis & Integrity Process to optimize Inline Inspection runs — because nothing is more important for your operational efficiency and peace of mind than Field Verification Specialists who understand the data and are connected to the process via a feedback loop.

Our teams use the latest methodologies and algorithms to reanalyze historic inspection runs. We strategically deploy specialized engineering task groups dedicated to addressing specific challenges or conducting

custom cases studies, such as pattern analysis for unique threats like offshore riser corrosion, selective seam corrosion, or complex geometry feature assessments. We implement advanced data analysis, including in-depth signal interpretation for features that fall below reporting thresholds. In short, NDT Global acts as your trusted partner, helping you leverage the Power of Clarity for confident integrity management decisions.

Integrity Advisory Services

Dynamic Risk, a sister business unit of NDT Global under the Previa group, brings expertise and innovation to safeguard pipeline performance across its entire lifecycle.

Utilizing advanced engineering insights, proprietary software such as the AI-enhanced Integrated Risk Assessment System (IRAS), and world-class advisory support, Dynamic Risk empowers operators to make informed, risk-based decisions. With a proactive, holistic approach that integrates precision inspection data with actionable recommendations, operators can mitigate operational threats, enhance safety, and boost productivity.

Together, NDT Global and Dynamic Risk deliver unmatched clarity and confidence, offering truly end-to-end solutions that drive superior pipeline integrity management.



A Roadmap for Achieving Operational Excellence

Unlock the full potential of your pipeline data with NDT Global.

Through our expertise, tools, insights, and advisory services, we help ensure your pipeline operations are safer, smarter, more profitable, and more sustainable. From raw data to actionable solutions, we deliver precision, value, and peace of mind at every stage.

Partner with us to transform challenges into opportunities and achieve excellence in pipeline integrity management.





NDT Global Corporate Ltd.
One Swift Square,
Santry Demesne, Dublin,
D09 A0E4, Ireland

+353 1 685 20 42
+353 1 531 33 65

www.ndt-global.com



NDT Global is a Previaan Business Unit.