

for pets

BROUGHT TO YOU BY NATIONWIDE®

Be prepared for an emergency

Have a go-bag ready for pets

Keep a small, accessible bag stocked with a few days' worth of pet food and treats, any necessary medications and a spare collar and leash.



Create an evacuation plan

- Whether it's a **pet-friendly shelter or hotel**, know where to go ahead of time.
- When evacuating, secure your pet in a **carrier or on a leash**. Frightened pets can panic and run away.

ALERT!
Pets inside



Alert firefighters to indoor pets

Place a **pet rescue fire safety sticker** on a couple of windows to alert rescuers (stickers can be found at most pet stores and pet organizations).



Keep outdoor kennels or pens away from bushy areas

as these areas can catch fire and put pets at risk.



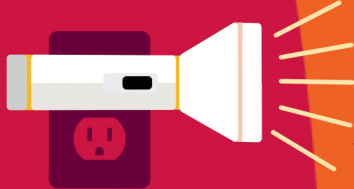
Maintain fire precautions

Check **fire alarms** regularly and keep a functioning **fire extinguisher** handy.



Consider buying emergency flashlights that plug in to accessible outlets

They're easy to locate during an emergency and usually come with a built-in nightlight or blackout light.



Leave open access for your pets to escape

such as doors and windows.

Learn your pets' hiding spots

so you can quickly search for them.



Nationwide® pet insurance covers veterinary treatment costs relating to burns, injuries and more.



Nationwide®
is on your side

Insurance terms, definitions and explanations are intended for informational purposes only and do not in any way replace or modify the definitions and information contained in individual insurance contracts, policies or declaration pages, which are controlling. Such terms and availability may vary by state and exclusions may apply. Underwritten by Veterinary Pet Insurance Company (CA), Brea, CA, an A.M. Best A rated company (2013); National Casualty Company (all other states), Columbus, OH an A.M. Best A+ rated company (2014). Nationwide, the Nationwide N and Eagle, and Nationwide Is On Your Side are service marks of Nationwide Mutual Insurance Company. ©2016 Nationwide. 16GRP4296