

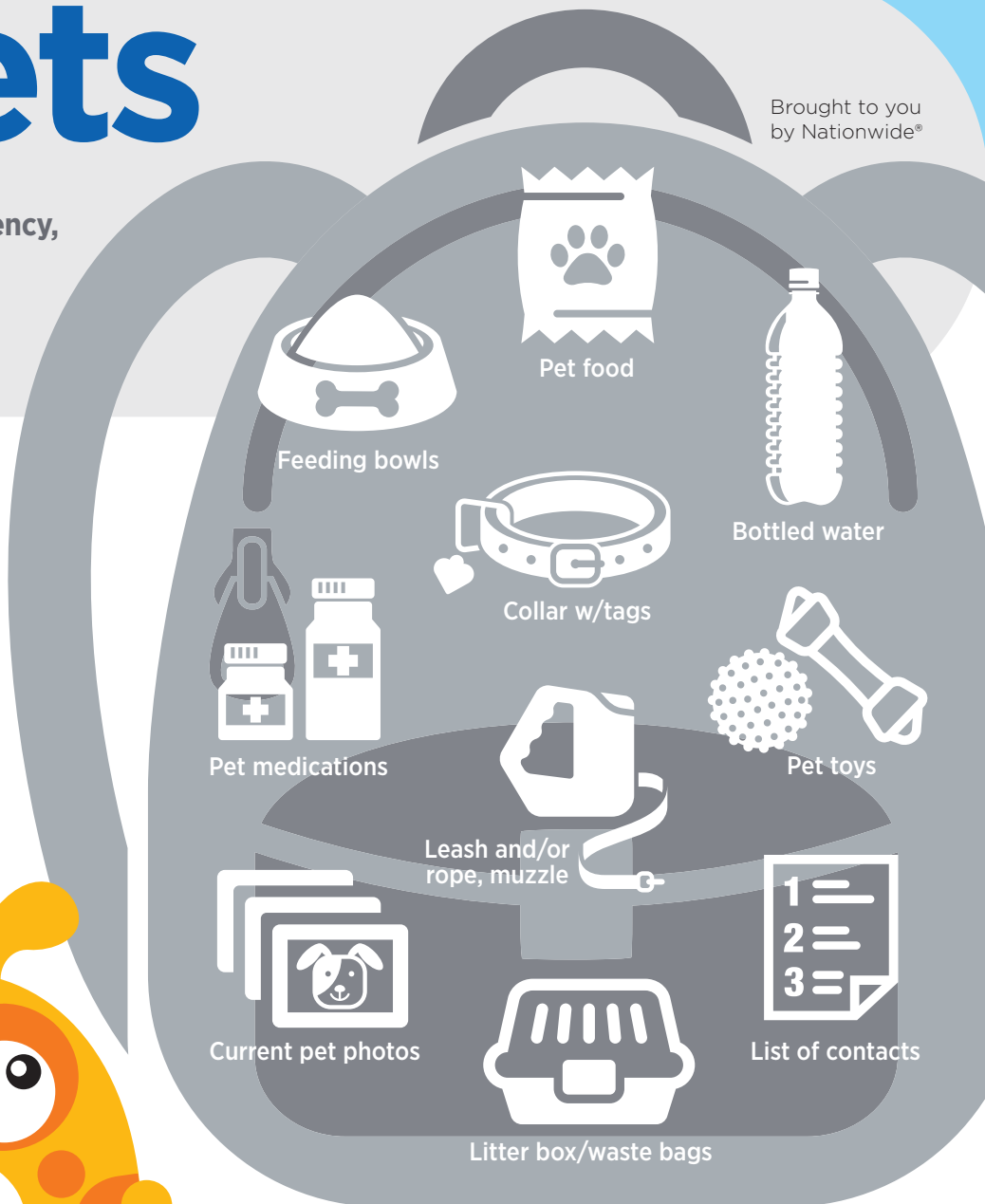
Disaster Plan for Pets

Brought to you by Nationwide®

Whether it's a disaster or an emergency, planning ahead will save valuable time—and keep pets safe

Prepare a "grab & go" bag

Keep a bag filled with at least a five-day supply of these essential pet supplies in a readily-accessible area.



Smoke inhalation

\$447*

Blunt force trauma

\$347*

Lacerations

\$329*

*Average claim amount based on Nationwide® claims data.



Pet kennels and bedding

- Familiar bedding can reduce pets' stress.
- A pet carrier or a kennel shields pets from noise, curious onlookers and other wandering pets and prevents pets from fleeing.



Find a pet-friendly hotel

Keep a list of at least three pet-friendly hotels outside your immediate area in your pet's go-bag.



Reach out to friends

Who would be willing to shelter your pet in an emergency? Make arrangements ahead of time.



Locate a shelter that accepts pets

Not all evacuation shelters accept pets. Research shelters now, keep info in your pet's go-bag.



Nationwide® pet insurance covers treatment costs relating to accidents, injuries and more. Get a quote today at PetsNationwide.com • 877-738-7874



Nationwide®
is on your side