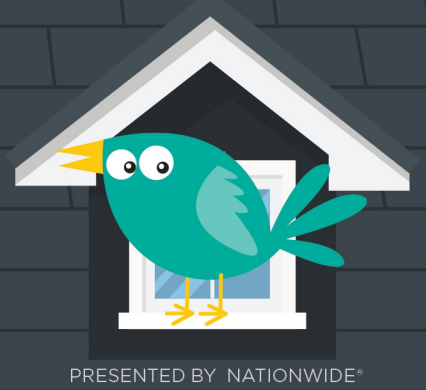
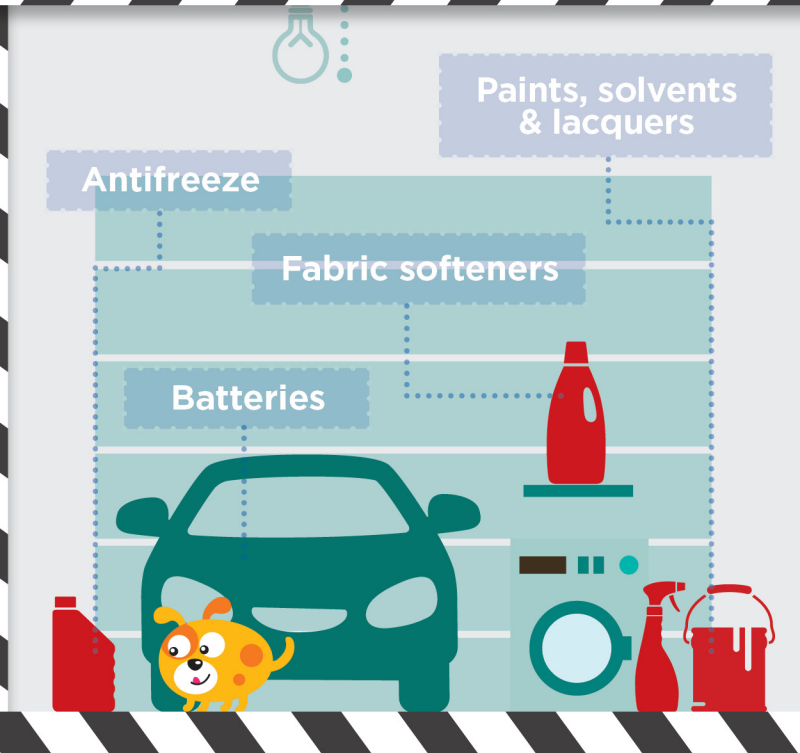
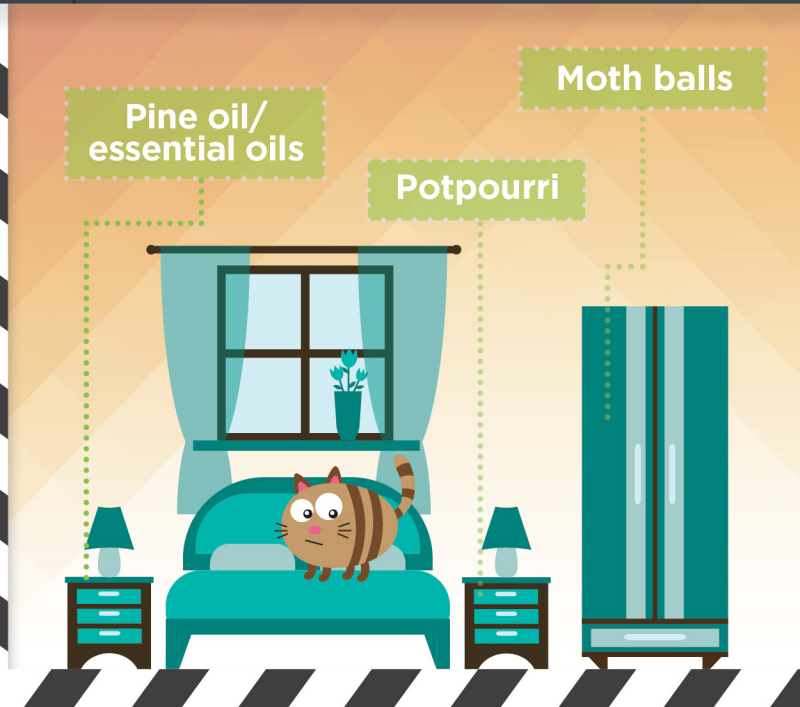
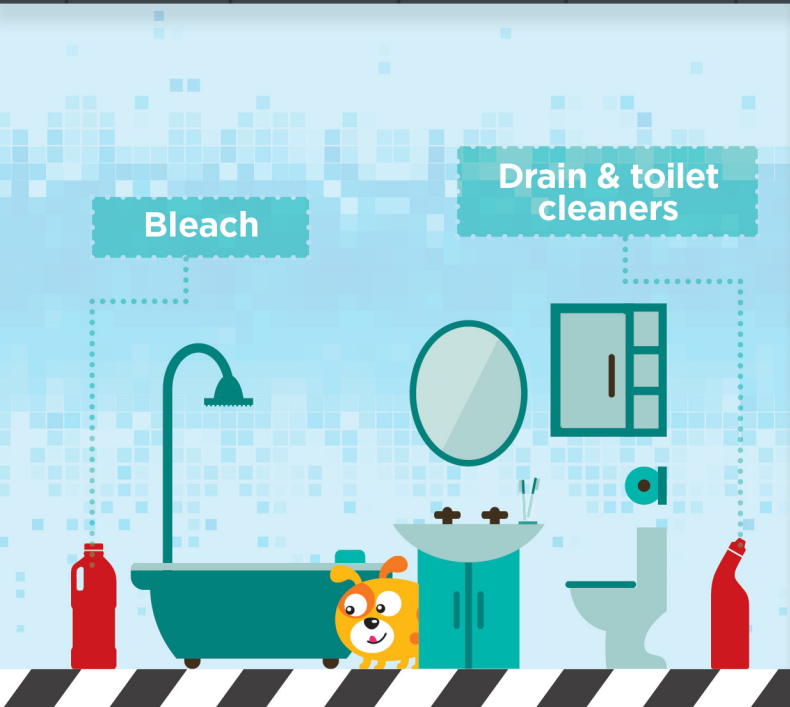


Household pet toxins



PRESENTED BY NATIONWIDE®

These common household chemicals can cause serious injury to your pet if ingested.



Absorbed poisons

Chemicals can enter the body through the skin. Canine spot-on flea treatment, for instance, is highly toxic when applied on cats. Concentrated tea tree oil is also toxic to dogs and cats.



Inhaled poisons

Carbon monoxide, smoke and chemical fumes are all forms of inhaled poisons. Exposure can result in disorientation or unconsciousness, with or without coughing.



*Teflon® coated cookware emits PTFE fumes when overheated, which can be fatal to birds.

Signs of toxicity

Excessive salivation
Racing or irregular pulse
Vomiting
Cold extremities
Lethargy
Rapid breathing



Nationwide® covers poisonings, household accidents and more.
Get a quote at [PetsNationwide.com](https://www.PetsNationwide.com)



Nationwide®
is on your side