

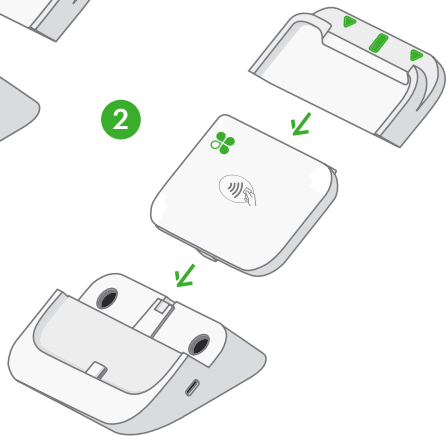
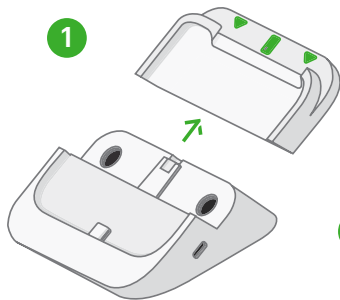


Go Dock

Quick Start Guide



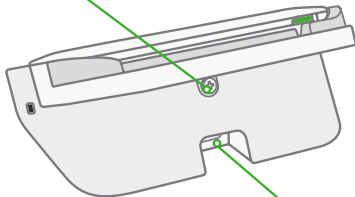
clover.com/help/go-3



3



Tighten screw



4



(Cable not included)

Optional mounting

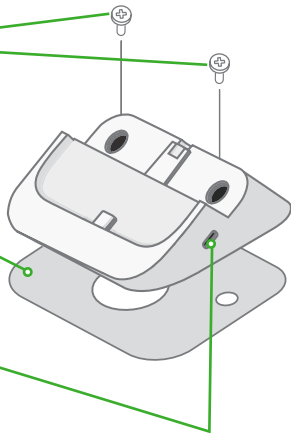
A: Screw to countertop

Use M4 or #8 Pan Head screws
(screws not included)

B: Adhere to countertop

Clean table surface and press and
hold adhesive strip for 10 seconds

C: Lock with a security cable



Clover Go 3 Dock

Model Number: K600



Patent

clover.com/patents

Clover Network, LLC.
415 N Mathilda Ave
Sunnyvale, CA 94085, USA

Waste Electrical and Electronic Equipment-WEEE

NOTE: This product is covered electronic equipment under the European Union's Waste from Electrical and Electronic Equipment ("WEEE") Directive (2012/19/EU). The WEEE Directive requires that covered equipment be collected and managed separately from typical household waste in all EU member states. Please follow the guidance of your local environmental authority or ask the shop where you purchased the product for collection or recycling options.