

EXPEDITIONS

KANDY - NUWARA ELIYA - WELIGAMA

5 DAYS / 4 NIGHTS



A CAPTIVATING JOURNEY

Arrive in Colombo and then head straight towards the hill country where sprawling tea estates and lush green forests lie waiting to greet you while the crisp cool air welcomes you to the centre of paradise. Then journey to the southern coast where the sea and sand are embraced in the sun's warmth.

DAY 01 | AIRPORT TO KANDY

At the Colombo Airport, our chauffeur guide will greet you before driving you to W15 Hanthana to begin your experience.

Depending on your arrival time at the property you can choose to indulge in our high tea experience or a picnic.



Suggested overnight stay at
W15 Hanthana, Sri Lanka

DAY 02 | KANDY

Enjoy a hearty start to the day with a big breakfast as you awake to the sounds of the birds. Then venture out of the property and head into the Hanthana hills for a trek, a bike ride, or in a restored Land Rover. Enjoy a picnic with the local wildlife while surrounded by ethereal forests and the mountainous terrain.

When you get back, fill up on a hearty lunch that was perfectly prepared and elegantly plated. Spend the remainder of the day swimming, playing tennis, or playing outdoor games on the lawn. And as night falls, our chef will undoubtedly prepare something exceptional for dinner.

The following experiences are available on request:

- Trek or cycling tour of Hanthana mountains
- Wildlife excursion
- Bird or Butterfly watching tour
- Open-top Defender ride
- Kandy City tour
- Cooking demonstration



Suggested overnight stay at
W15 Hanthana, Sri Lanka



DAY 03 | KANDY - NUWARA ELIYA

After a hearty breakfast and an early rise, it's time for you to travel further into the hills. Here, a picturesque area of colonial architecture and the vibrant local culture adds colour to life in the chilly mountains.

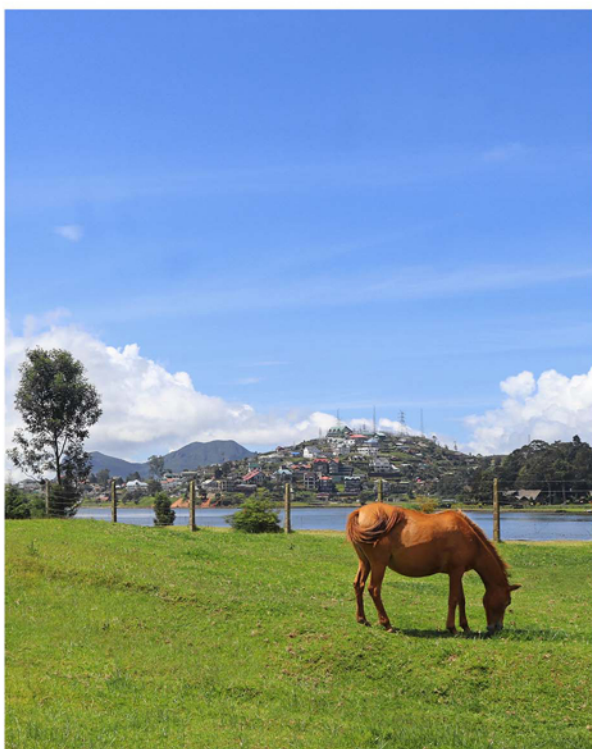
You can reach the town known as Little England after a 2.5-hour drive. Take a moment to unwind after you arrive at W15 Lake Gregory as your butler makes sure everything is ready for your lavish stay. After lunch, grab some bicycles or go for a stroll through the town to see the remains of a bygone era. Visit the bustling Bale Bazaar or the local market for a more native experience, or explore the lush grounds of Victoria Park, the Golf Course, and the Race Course.

The following experiences are available on request:

- Nuwara Eliya City Tour
- Wildlife or bird watching tour
- Tea Factory Tour
- Hike to Single Tree Mountain or Pedro Estate view point
- Historic and religious landmark tour
- Picnic



Suggested overnight stay at
W15 Lake Gregory, Sri Lanka



DAY 04 | NUWARA ELIYA - WELIGAMA

After breakfast, get ready to travel to Weligama's shore, where sun-kissed beaches are beckoning your presence. You'll arrive at the sandy beaches and the waves after a four-hour trip. Weligama is known for its surf, so if you're seeking a more exciting experience, this is the perfect activity for you. While our restaurant serves up some of the all-time favourites like wood-fired pizza, large hearty burgers, and tropical drinks, the beach will come alive with music and colour as night falls.

Please note that the season for surfing in Weligama is between November and April.

The following experiences are available on request

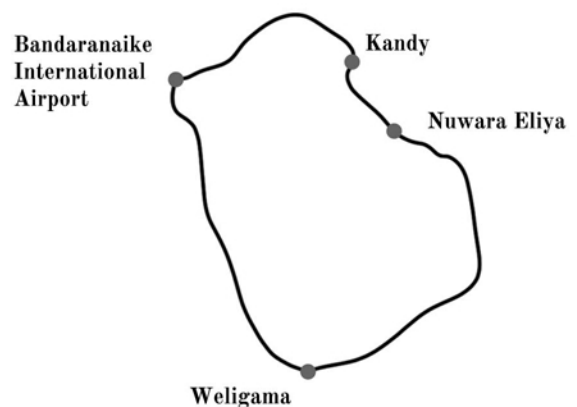
- Organic farm visit
- Cinnamon Island
- Whale or dolphin watching
- Sea turtle hatchery
- Galle Fort



Suggested overnight stay at
W15 Weligama, Sri Lanka

DAY 05 | WELIGAMA - AIRPORT

After breakfast, get ready to travel back to Colombo. Depending on the time of your flight, we may be able to arrange a brief city tour for you before you get to the airport.





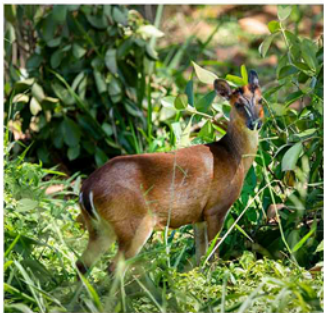
SUGGESTED EXPERIENCES

From the wonder of the hills to the vibrant coast, there's always an enthralling encounter to be discovered. Check out these captivating experiences and excursions while you explore the island's history and natural beauty. Create moments that become everlasting memories with the W15 Collection.

TREK OR CYCLING TOUR OF HANTHANA MOUNTAINS



WILDLIFE EXCURSION



BIRD OR BUTTERFLY WATCHING TOUR



OPEN-TOP DEFENDER RIDE



KANDY CITY TOUR



COOKING DEMONSTRATION



PICNIC



HIGH TEA AT HANTHANA



WILDLIFE OR BIRD WATCHING TOUR



TEA FACTORY TOUR



SINGLE TREE MOUNTAIN



PEDRO ESTATE VIEW POINT



GALLE FORT



CINNAMON ISLAND



WHALE OR DOLPHIN WATCHING



SEA TURTLE HATCHERY



SUGGESTED HOTELS

W15 HANTHANA

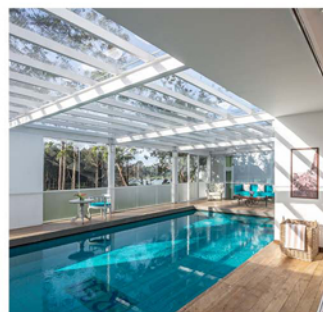
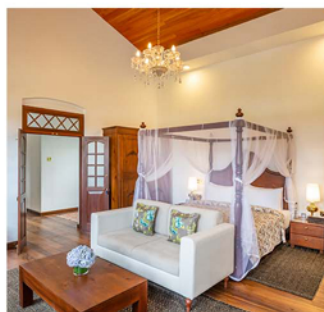
A world of colonial charm that blends perfectly with its sublime surroundings of rolling tea plantations and emerald green forests. A beautifully restored bungalow, dating back to the days of the British empire, sits amidst the lush vegetation. Hanthana is recognized as one of the Sri Lanka's most picturesque regions and the panoramic view from our bungalow will not disappoint.



@f @w15hanthana ☎ +94 76 986 8072 🌐 www.hanthana.w15.lk

W15 LAKE GREGORY

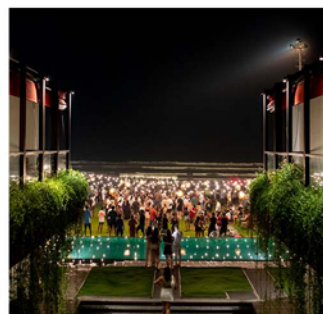
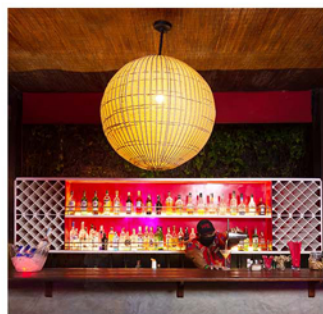
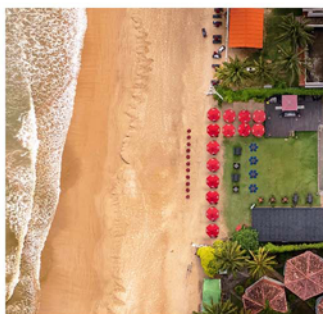
A luxury boutique bungalow that sits on the hills of Nuwara Eliya, overlooking the infamous Lake Gregory on one side and the Galway National Park on the other. Escape into a sublime world where the crisp mountain air sweeps across the most exquisite space, that has a realm of colonial architecture merging with redefined luxury.



@f @w15lakegregory ☎ +94 76 974 5355 🌐 www.lakegregory.w15.lk

W15 WELIGAMA

W15 Weligama lies right on the shore of the Indian Ocean with chilled vibes and amazing cuisine. The oceanfront property is always playing host to the vibrant life of the Sri Lankan coast. A collision of contemporary and minimalist design creates the perfect ambience for your escape.



@f @w15weligama ☎ +94 76 297 2204 🌐 www.weligama.w15.lk

PRICING AND CONDITIONS

Starting at **\$840** per person on Double sharing basis.

INCLUDES

- All transfers in an Air-conditioned vehicle.
- Accommodation on BB Basis except for W15 Hanthana Estate which is on All Inclusive Basis.

EXCLUDES

- Entrance Tickets and Fees for excursions
- Extra meals not mentioned in the includes

CONTACT US FOR RESERVATION OR MORE DETAILS

Send an email or call or WhatsApp message our team now to make a reservation or to get more details about the tours and other holiday options.

✉ info@w15.lk

📷 [@w15collection](#)

☎ [+94 77 365 8339](tel:+94773658339)

🌐 www.w15.lk



W15

COLLECTION