

A person in a red shirt and dark pants is walking away from the camera on a sandy beach, carrying a large black surfboard under their arm. The ocean is in the background with gentle waves breaking. The sky is filled with large, white clouds, and the sun is low on the horizon, creating a warm, golden glow over the entire scene. In the distance, a city skyline is visible across the water.

EXPEDITIONS

K A N D Y - N U W A R A E L I Y A - W E L I G A M A

6 DAYS / 5 NIGHTS



6-DAY EXPEDITION

Explore the last kingdom of Sri Lanka and then follow the trails to the highest points of the island and end your adventure on the sunny coast of Sri Lanka. Experience a whole range of encounters and excursions that are curated for your discerning pleasure while staying in the pristine and breathtaking locations.

DAY 01 | ARRIVAL TO BIA AND PROCEED TO KANDY

Your experience will begin with a ride to the hills to W15 Hanthana once our chauffeur guide greets you at the Colombo Airport. Indulge in a destination that is steeped in beauty. You will be welcomed by the towering mountains while your own butler will see to it that you are unpacked.

Depending on your arrival time at the property you can choose to indulge in our high tea experience or a picnic



Suggested overnight stay at
W15 Hanthana, Sri Lanka

DAY 02 | KANDY

Start your day off well with a delicious breakfast as you awake to the sounds of the birds. After that, venture off the property and into the Hanthana hills on foot, on bicycle, or in a restored Land Rover. Enjoy a picnic while the local wildlife captivates you amidst the mystical woodlands and majestic mountains.

The following experiences are available on request

- Trek or cycling tour of Hanthana mountains
- Wildlife Excursion
- Bird or butterfly watching tour
- Open-top defender ride
- Kandy City tour



Suggested overnight stay at
W15 Hanthana, Sri Lanka



DAY 03 | KANDY – NUWARA ELIYA

You can head farther into the hills after an early start and a delicious breakfast. Here, you will find a picturesque area of colonial architecture and a thriving local culture that provide colour to life in the chilly mountains. After a 2.5-hour drive, you arrive at W15 Lake Gregory. Take a moment to unwind after as your butler makes sure everything is ready for your lavish stay. Grab some bikes or go for a walk into town after lunch so you may explore the remains of a bygone age.

The following experiences are available on request

- Nuwara Eliya City Tour
- Wildlife or bird watching tour
- Tea Factory Tour
- Hike to Single Tree Mountain or Pedro
- Estate view point
- Historic and religious landmark tour
- Picnic



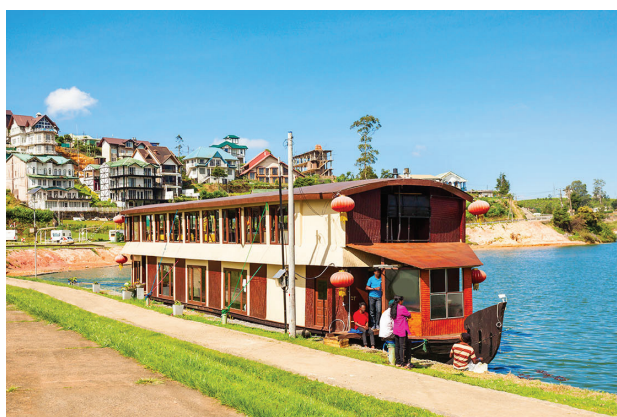
Suggested overnight stay at
W15 Lake Gregory, Sri Lanka

DAY 04 | NUWARA ELIYA - WELIGAMA

After breakfast, get ready to travel to Weligama where the waves and the sandy beaches will welcome you after a four-hour journey. Weligama is well-known for its surf, so if you're seeking for a more exciting experience, this is the wise move. While our restaurant serves some of the all-time favourites and quirky cocktails, the beach will come alive with music and colour through the night.



Suggested overnight stay at
W15 Lake Gregory, Sri Lanka



DAY 05 | WELIGAMA

Weligama is bursting with thrilling discoveries, whether you wish to challenge the surf and the waves or explore the seaside activities the little town has to offer. Visit a low-country tea plantation or an organic farm, or go on one of the many fascinating excursions Sri Lanka's southern coast has to offer. You may relax or let loose while we serve some of the best meals and tropical cocktails found along the coast, while a lively party or outstanding artists taking the stage.

The following experiences are available on request

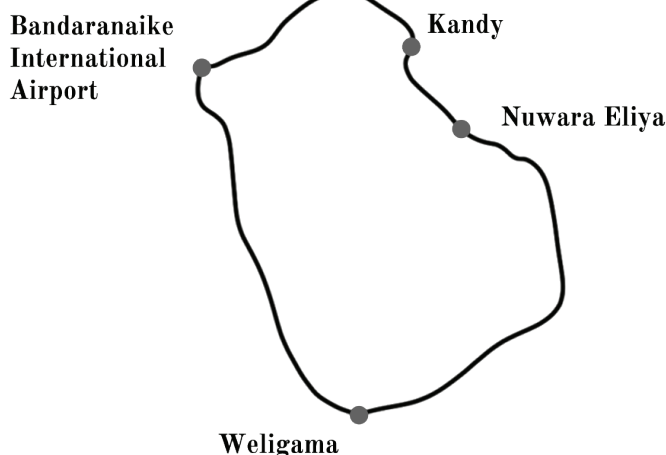
- Organic farm visit
- Cinnamon Island
- Whale or dolphin watching
- Sea turtle hatchery
- Galle Fort



Suggested overnight stay at
W15 Lake Gregory, Sri Lanka

DAY 06 | WELIGAMA - AIRPORT

After breakfast, get ready to travel back to Colombo. Depending on the time of your departure, we can arrange a quick tour of the island's bustling capital city before you get to the airport.





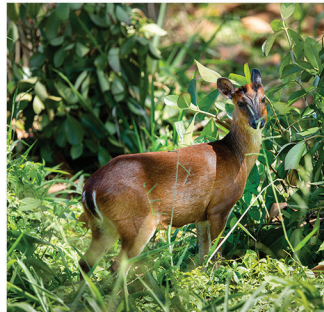
SUGGESTED EXPERIENCE

You can head farther into the hills after an early start and a delicious breakfast. Here, you will find a picturesque area of colonial architecture and a thriving local culture that provide colour to life

TREK OR CYCLING TOUR OF HANTHANA MOUNTAINS



WILDLIFE EXCURSION



BIRD OR BUTTERFLY WATCHING TOUR



OPEN-TOP DEFENDER RIDE



KANDY CITY TOUR



COOKING DEMONSTRATION



PICNIC



HIGH TEA AT HANTHANA



WILDLIFE OR BIRD WATCHING TOUR



TEA FACTORY TOUR



SINGLE TREE MOUNTAIN



PEDRO ESTATE VIEW POINT



GALLE FORT



CINNAMON ISLAND



WHALE OR DOLPHIN WATCHING



SEA TURTLE HATCHERY



PRICING AND CONDITIONS

Starting at **\$840** per person on Double shoring basis.

INCLUDES

- All transfers in an Air-conditioned vehicle.
- Accommodation on BB Basis except for W15 Hanthona Estote which is on All Inclusive Basis.

EXCLUDES

- Entrance Tickets and Fees for excursions.
- Extra meals not mentioned in the includes.

CONTACT US FOR RESERVATION OR MORE DETAILS

Send an email or call or WharsApp message our team now to maw a reservation or to get more details about the tours and other holiday options.

✉ info@w15.lk

📷 [f](#) [w15collection](#)

📞 [+94 77 365 8339](tel:+94773658339)

🌐 www.w15.lk



W15

COLLECTION