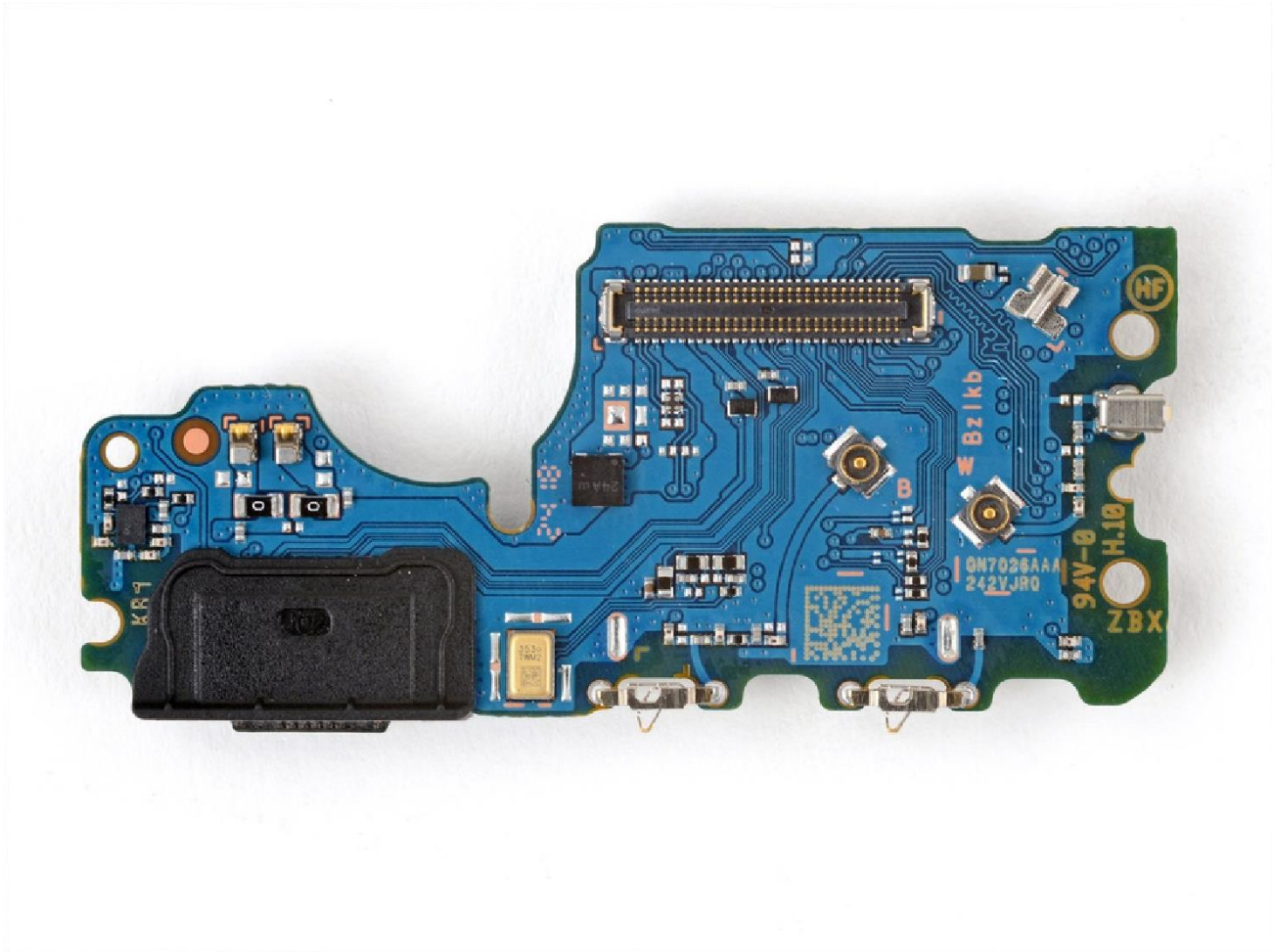


HMD Skyline Charging Board Replacement

Follow this guide to replace the charging board...



INTRODUCTION

Follow this guide to replace the charging board in your HMD Skyline smartphone.

The USB-C charging port and storage expansion/SIM tray are attached to the charging board. If the USB-C port breaks, you have problems charging your phone, or the SIM tray isn't inserting correctly, you'll need to replace the entire charging board.

TOOLS:

SIM Card Eject Tool

T3 Torx

Screwdriver


Opening Pick

Spudger

Angled Tweezers

Step 1 — Prepare your phone for disassembly



 Let your phone's battery drain below 25% before starting this repair. A charged lithium-ion battery may catch fire if damaged.

- Unplug all cables and completely power off your phone.

Step 2 — Remove the SIM card tray



- Firmly press a SIM eject tool, bit, or straightened paper clip into the SIM tray hole on the bottom edge of your phone until the tray ejects.
 - Remove the SIM card tray.
- i** A thin rubber gasket around the SIM tray provides water and dust protection. If this gasket is damaged or missing, replace the gasket or the entire SIM tray to protect your phone's internal components.

Step 3 — Separate the back cover



- i** A screw-driven camshaft in the bottom left corner pushes the back cover away from the phone, creating a gap to begin separating the cover.
- With the back cover facing up, use a T3 Torx screwdriver to turn the screw in the bottom edge *counterclockwise* until the back cover pops up.

Step 4



(i) Before separating the back cover, note the following:

- There's a seam just under the back cover panel. Don't insert your tool here.
 - Insert your tool completely under the back cover, so it's between the frame and the underside of the back cover.
 - Insert an opening pick under the bottom left corner of the back cover and slide it along the bottom edge to release the clips and separate the adhesive.
- (i)** You should feel and hear the back cover clips release. If you don't, insert the pick deeper and try again.

Step 5



●

Continue sliding the pick under the perimeter of the back cover to fully separate the clips and adhesive.

Step 6 — Remove the back cover



- Lift and remove the back cover.
- ★ During reassembly:
 - Now is a good time to test your phone before sealing it up. Power it on and check that it works. Power it back down before you continue reassembly.
- ⓘ If you're installing a new back cover:
 - Make sure you remove all liners from the underside. (Refer to Snap 1 on the next page.)
 - Use the flat end of a spudger to press the small cable above the wireless charging coil into place over its alignment posts. (Refer to Snap 2 on the next page.)
- Place the back cover onto the frame and firmly squeeze around the perimeter to engage all the clips.

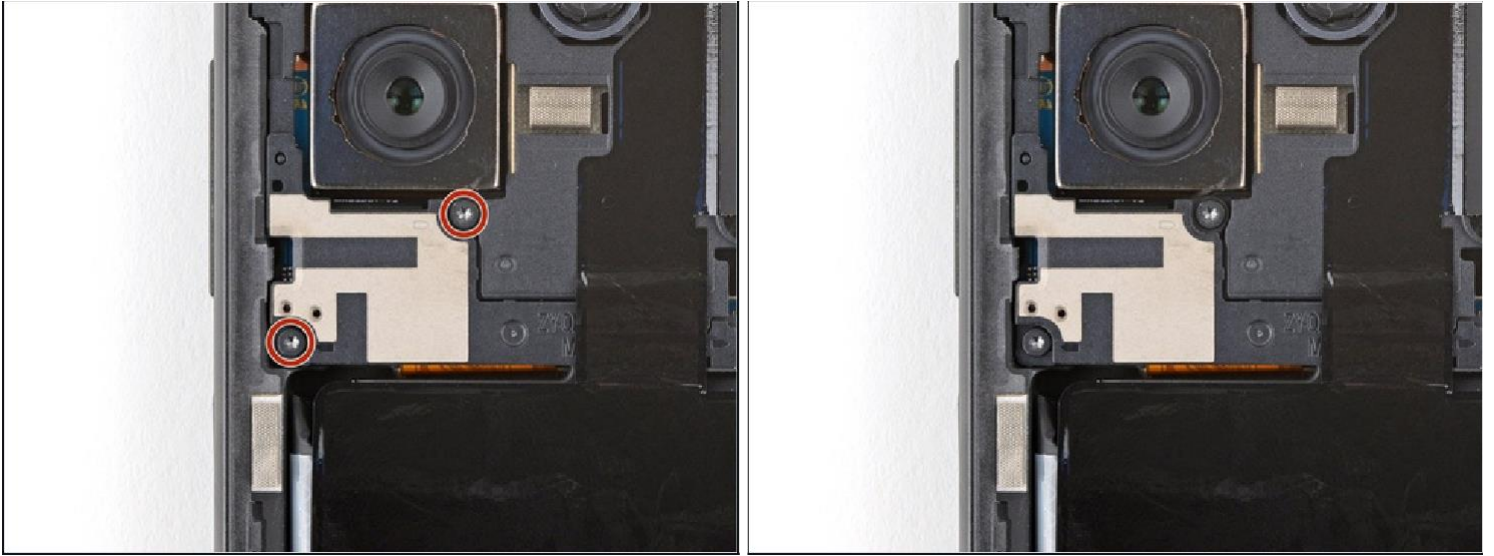
Snap 1



Snap 2

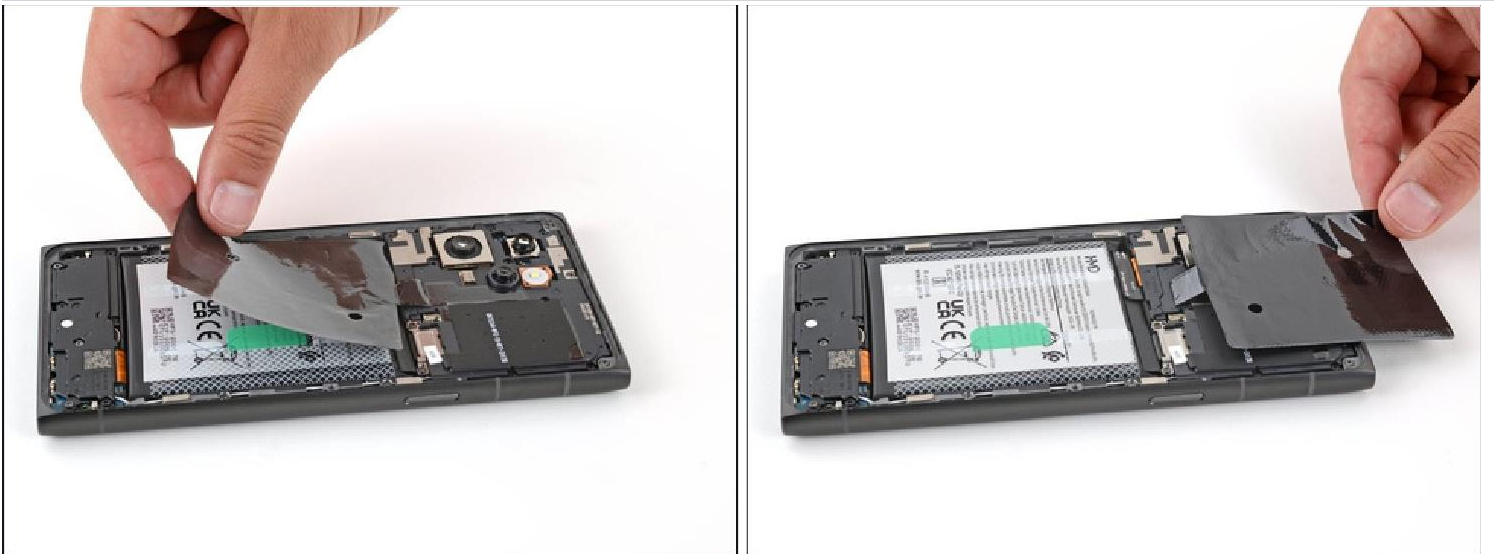


Step 7 — Disconnect the battery



- Use a T3 Torx screwdriver to remove the two screws securing the battery connector cover.

Step 8



- *Gently* flip the graphite sheet on the battery over the top edge of your  phone. *Be careful not to tear the sheet, as it's very delicate.*

Step 9



- Insert the point of a spudger in the notch on the left edge of the battery connector cover and pry up to release its clips.
- ⓘ Only insert your tool enough to pry up the cover. Otherwise, you may accidentally disconnect the rear camera press connector. (Refer to Snap 3 on the next page.)
- Remove the cover.
- ☑ During reassembly, firmly press the cover into place to engage the clips.

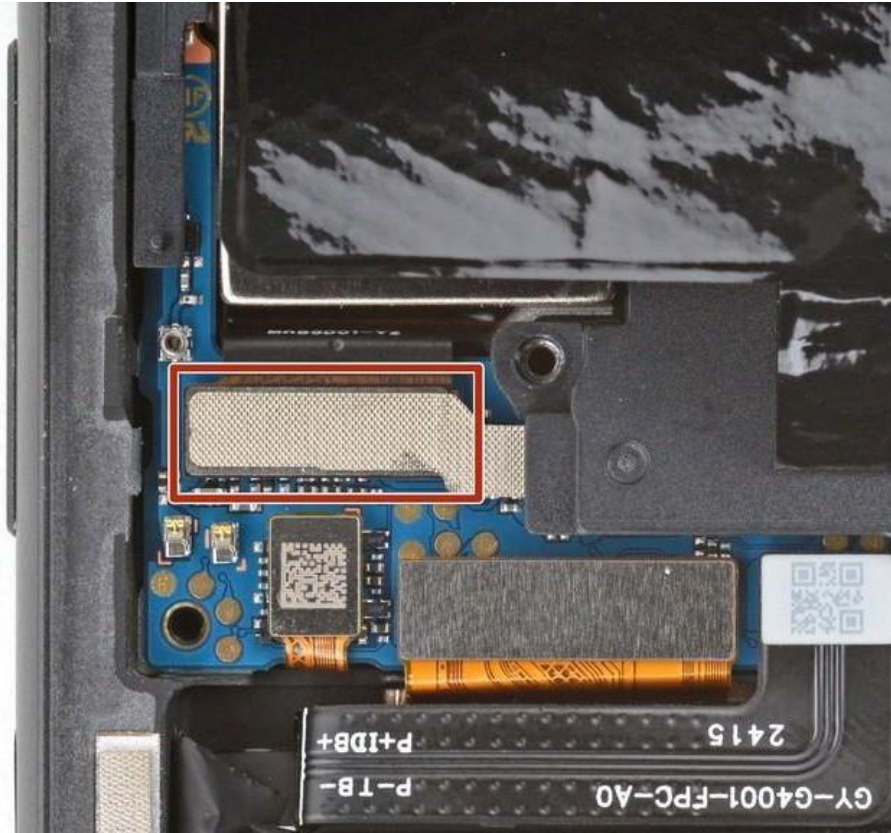
Step 10



- Insert the tip of an opening pick under the top edge of the battery press connector and pry up to disconnect it.
- Check if the rear camera press connector got disconnected during the previous step. If it did, reconnect it.
- ⓘ To reconnect a press connector, align it over the socket and gently press down

on one side until it clicks into place, then press down on the other side. It might take a few tries to align the connector.

Snap 3

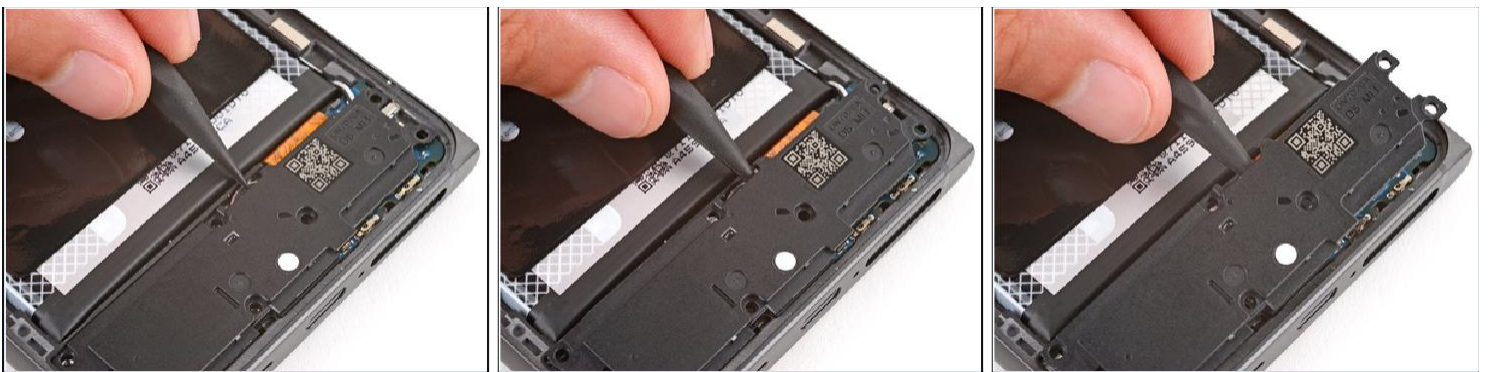


Step 11 — Remove the loudspeaker



- Use a T3 Torx screwdriver to remove the seven screws securing the
 - loudspeaker: Four 3.9 mm-long screws
 - Three 4.9 mm-long screws

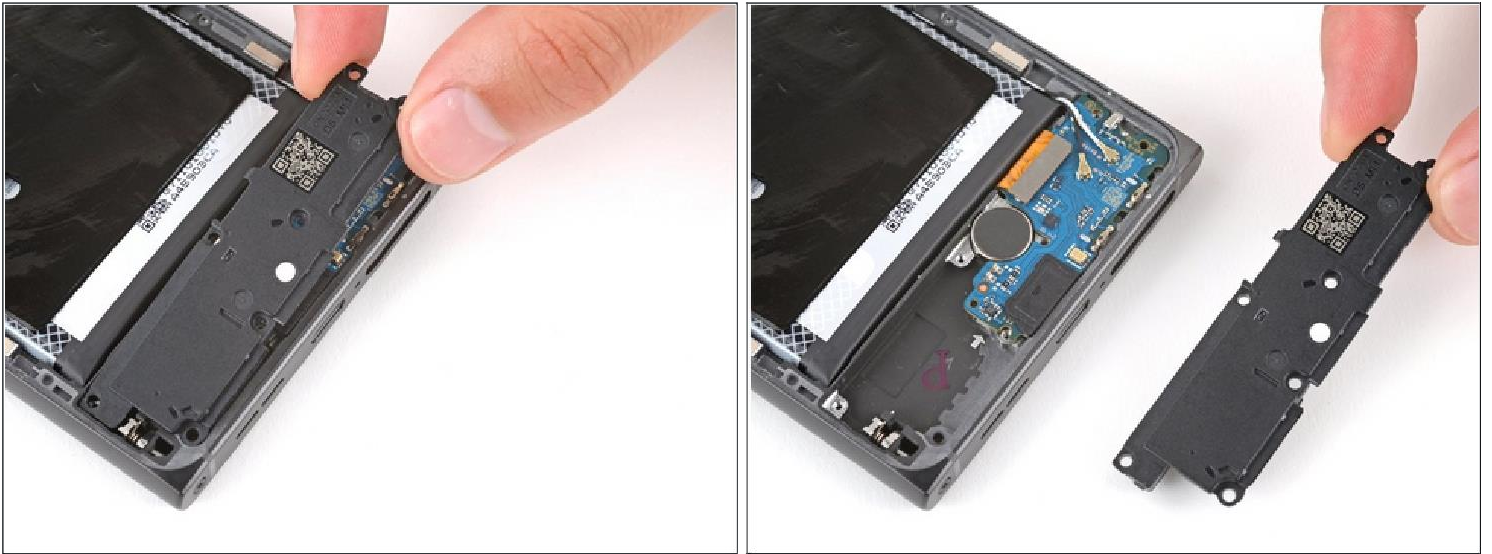
Step 12



- Insert the tip of a spudger under the center of the loudspeaker's top edge and lift to release its clips.

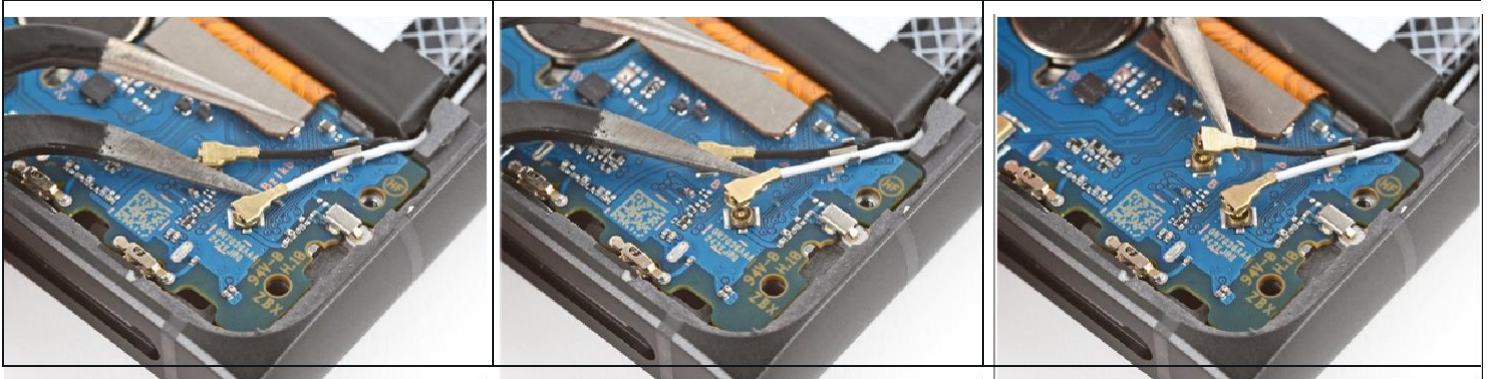
⚠ Don't pry against the battery, and be very careful not to puncture it with your tool.

Step 13



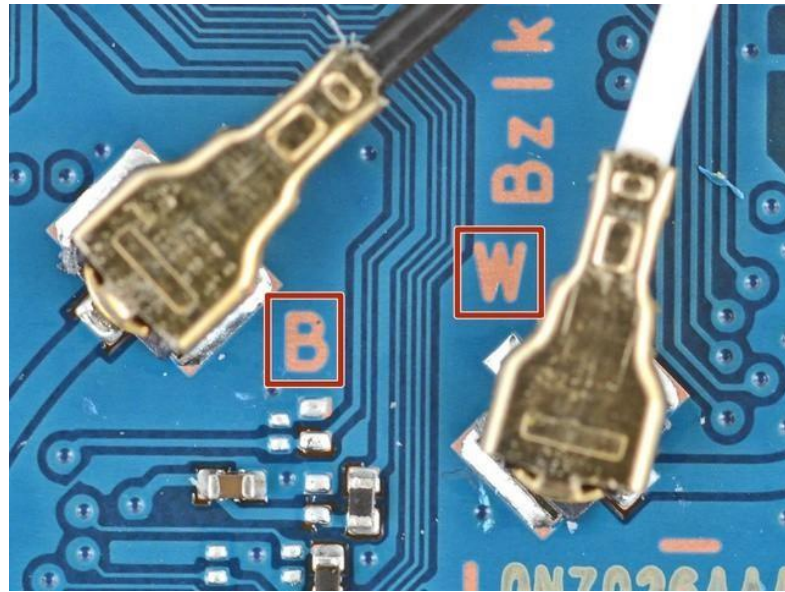
- Remove the loudspeaker.
- ☑ During reassembly, lay the loudspeaker in place and press firmly around its perimeter to engage the clips.

Step 14 — Disconnect the charging board

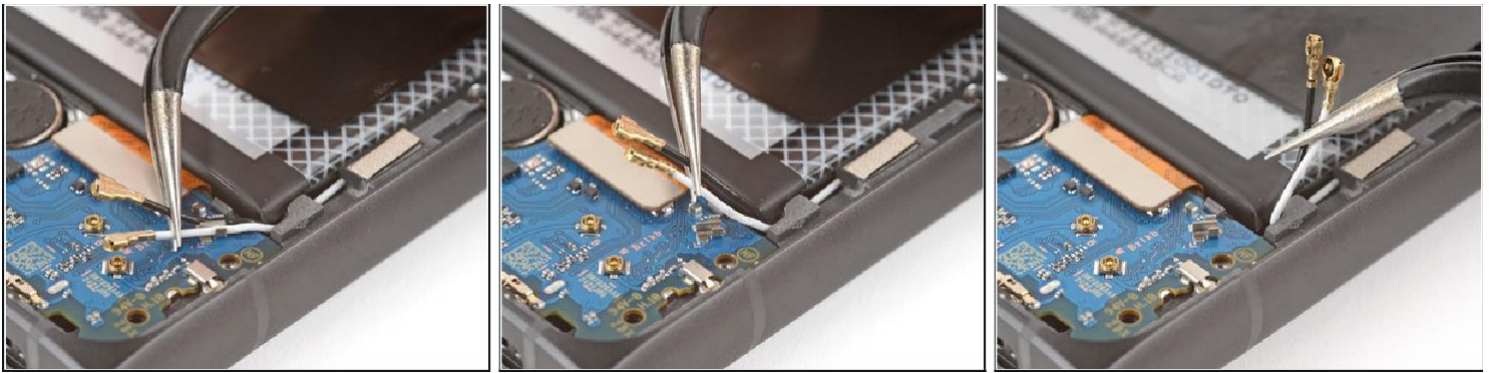


- Slide an arm of a pair of angled tweezers under the metal neck of one of the antenna connectors on the charging board and lift straight up to disconnect it.
 - ⓘ Make sure the tweezers arm is as close to the head of the connector as possible.
 - Repeat the process to disconnect the other coaxial connector.
- ★ During reassembly:
- ⓘ Use the markings on the Board to make sure the cables get connected to the correct socket—B for black and W for white. (Refer to Snap 4 on the next page.)
 - Hold the metal neck of the antenna connector with a pair of tweezers and align the head over its socket on the board.
 - Use the flat end of a spudger to press straight down on the connector head—it should snap into place. If you're having trouble, reposition the head and try again. Don't try to force the connector into place, or you risk damaging the charging board.

Snap 4



Step 15



- Use tweezers or your fingers to carefully grip both antenna cables and gently lift them out of their metal clips on the board.

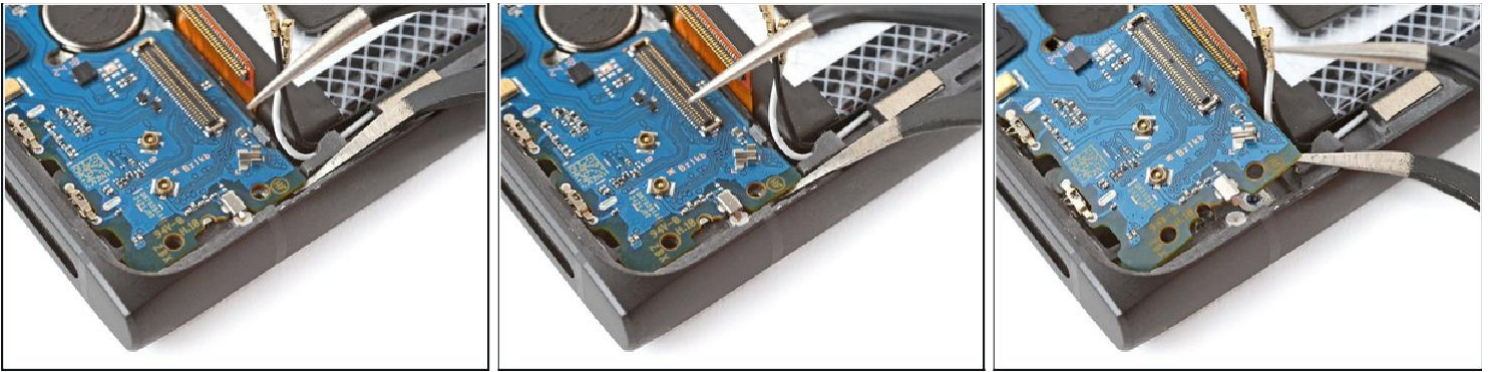
Step 16



⚠ Be very careful not to scrape up or damage any of the small, surface-mounted components around the connector during this step.

- Insert the flat end of a spudger under the bottom right corner of the charging board press connector and pry up to disconnect it.

Step 17 — Pry up the charging board

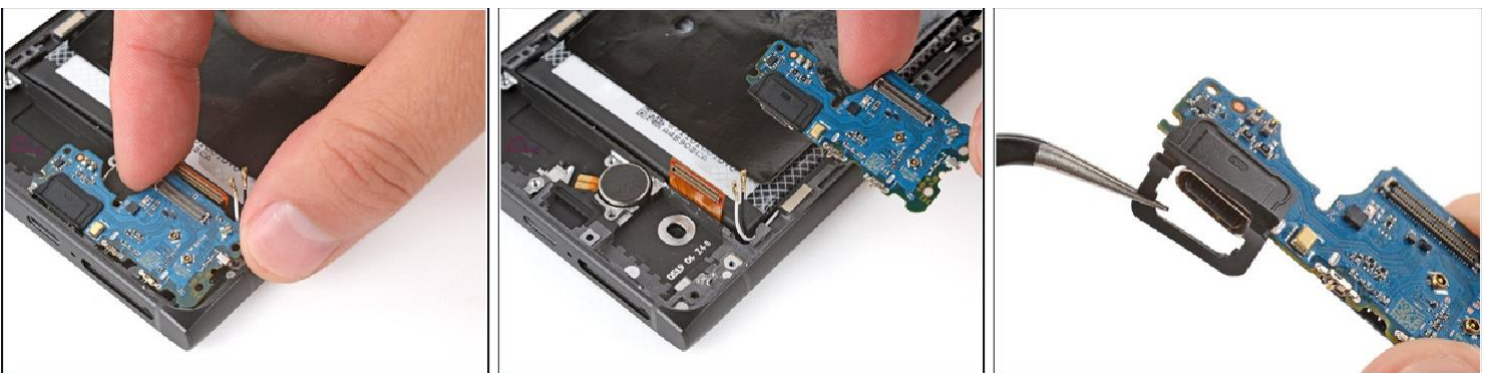


⚠ Be very careful not to puncture the battery during this step.

i Before unclipping the charging board, double-check that you removed the SIM card tray.

- Slide an arm of a pair of angled tweezers under the top right corner of the charging board and pry up to release the clip on the top edge. (Refer to Snap 5 on the next page.)

Step 18



- Lift the top edge of the board and remove it.

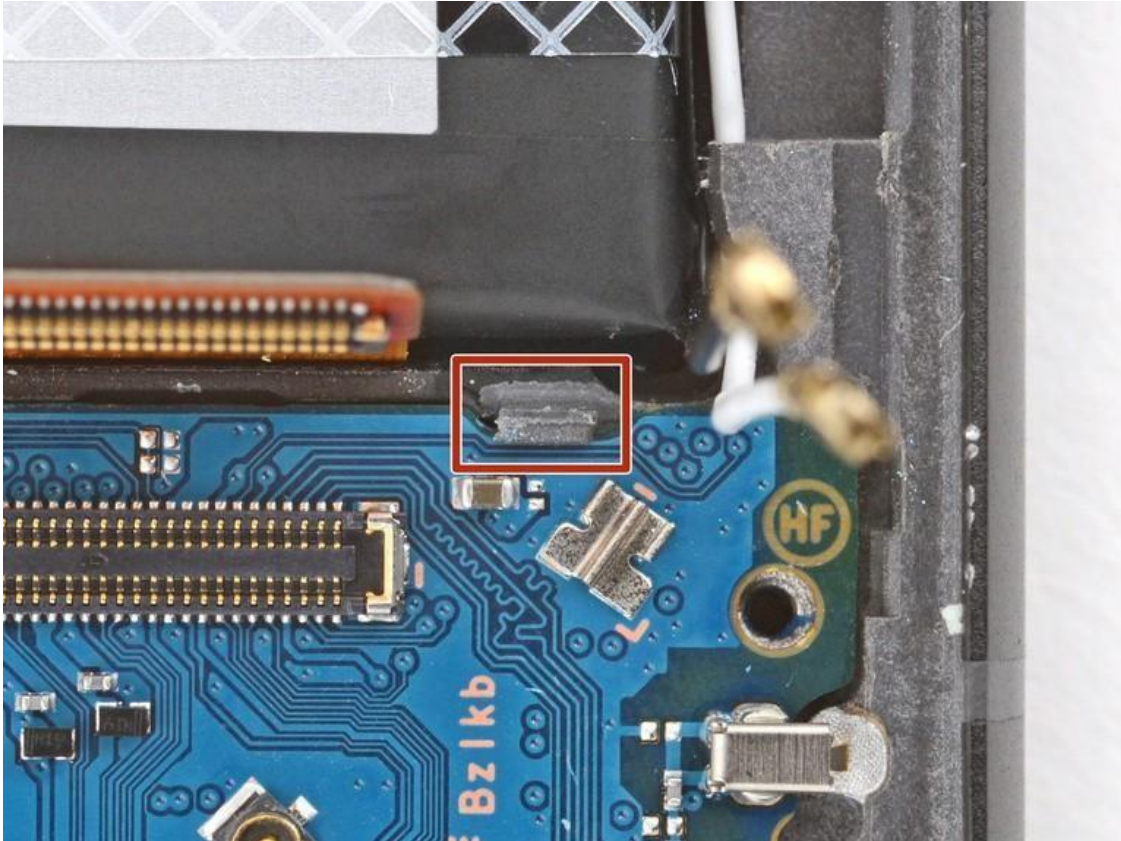
🔧 During reassembly:

- Make sure your USB-C port has a rubber gasket around it. If it doesn't, transfer the gasket from your old board, making sure the side with a cutout goes on the
- bottom. Insert the board at a downward angle so the USB-C port goes into its

cutout.

- ① Make sure none of the cables on the top edge get stuck under the board.
- Press down on the top edge of the board to engage its clip.

Snap 5



To reassemble your device, follow these instructions in reverse order.