

HMD Pulse Pro Back Cover Replacement



INTRODUCTION

Follow this guide to replace a cracked or damaged back cover on your HMD Pulse Pro smartphone.

tools needed

- 1× SIM Card Eject Tool
- 1× Opening Pick
- 1× Cross-head screwdriver
- 1× Spudger
- 1× Tweezers

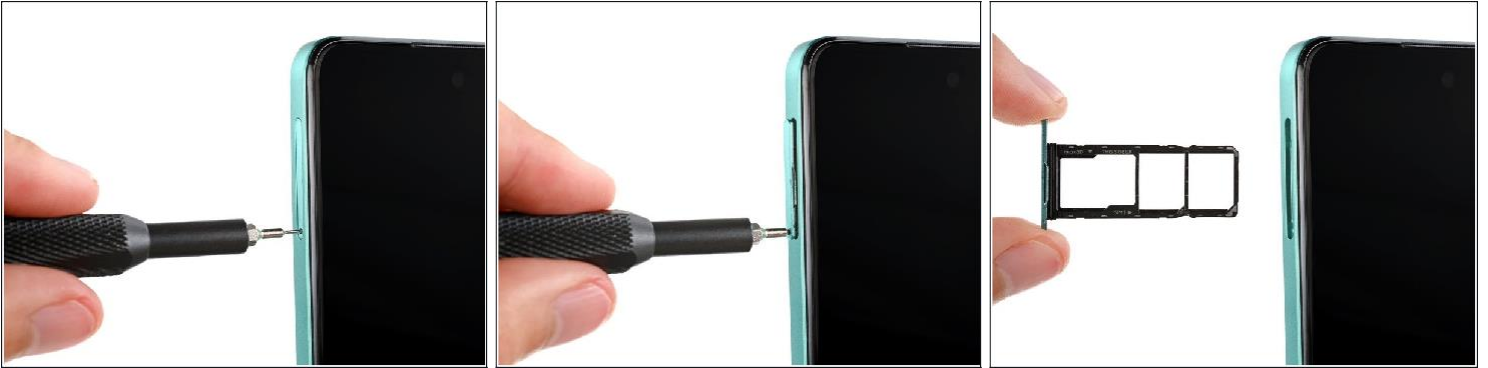
Step 1 – Prepare your phone for disassembly



⚠ Let your phone's battery drain below 25% before starting this repair. A charged lithium-ion battery may catch fire if damaged.

- Unplug all cables from your phone and completely power it down.

Step 2 — Remove the SIM card tray



- Firmly press a SIM eject tool, bit, or straightened paper clip into the SIM card tray hole on the left edge of your phone until the tray ejects.
 - Remove the SIM card tray.
- During reassembly, use the tray's markings to orient and reinsert it properly.

Step 3 — Separate the back cover



- Insert the tip of an opening pick between the back cover and frame, at the SIM card tray cutout.

Step 4



- Position the opening pick straight down and slide it along the left edge to begin unclipping the back cover.

Step 5



- Continue sliding the pick around the perimeter of your phone until the back cover is fully unclipped.
 - ⓘ The corners can be tricky to unclip and may take some force. If you're having trouble, try prying up with the pick.

⚠ Don't try to fully remove the cover yet, as a delicate cable still connects it to your phone.

Step 6



- Carefully flip your phone over so the back cover is facing up.
- Lift the back cover off the frame and flip it over the left edge of your phone, laying the cover flat on your work surface.
⚠ Be very careful not to strain the back cover's delicate cable.
- ☑ During reassembly, place the back cover onto the frame and firmly squeeze around the perimeter to reengage all the clips.

Your text here 1

Step 7 — Remove the motherboard cover



⚠ Be very careful not to puncture the battery with your Cross-head screwdriver.

- Use a Cross-head screwdriver to remove the nine 3.6 mm-long screws securing the motherboard cover.
- ⓘ The screw near the center of the top edge is covered by a sticker. Pierce through it with your Cross-head screwdriver, or use tweezers to remove it.

Step 8



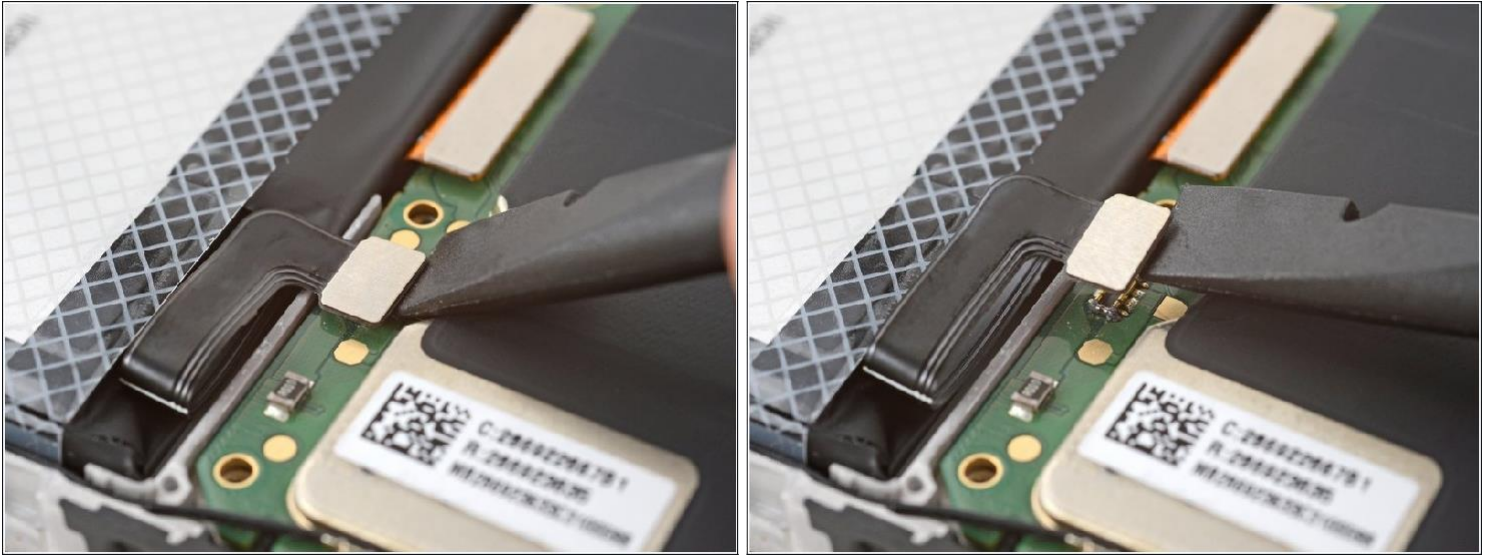
- Insert an opening pick between the right edge of the motherboard cover and
- frame. Twist the pick to fully unclip the cover.

Step 9



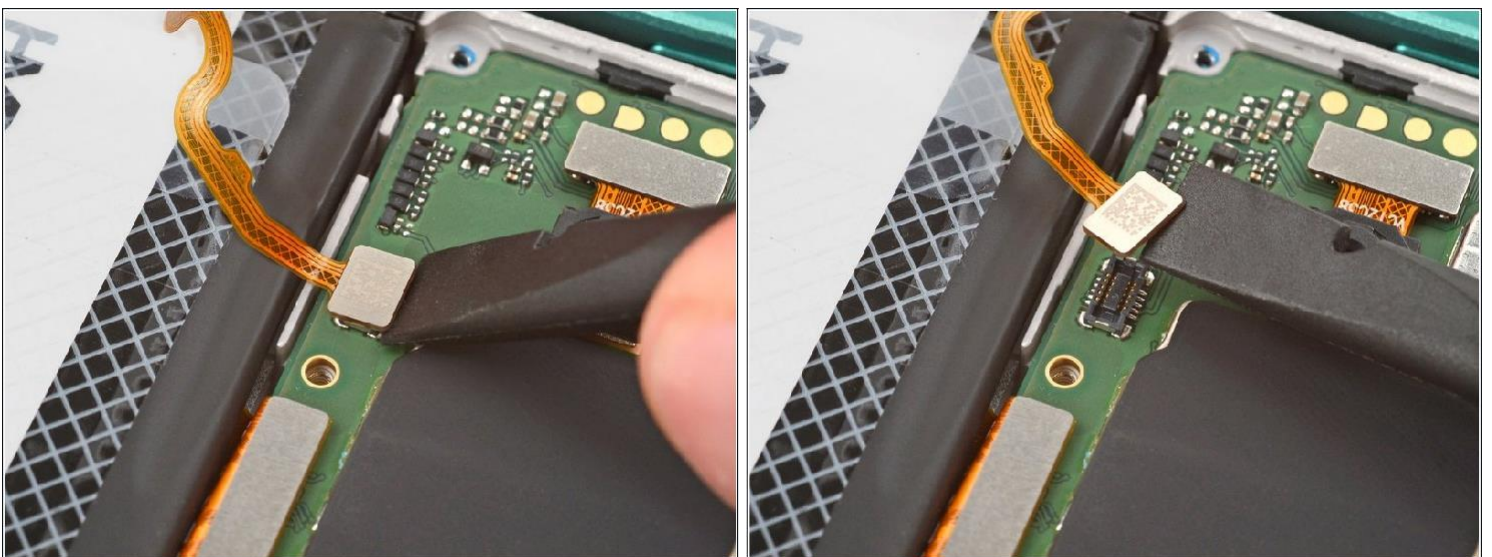
- Remove the motherboard shield and its connected graphite sheet.
- During reassembly, set the motherboard shield into place and press down firmly around the perimeter to reengage the clips.

Step 10 – Disconnect the battery



- Use the flat end of a spudger to pry up and disconnect the battery press connector from the bottom edge of the motherboard.
- ⓘ To reconnect these type of connectors, align the connector over its socket and press down with your fingertip—first at one side, then the other—until it clicks into place. Don't try to force the connector into place, or you may permanently damage it.

Step 11 – Remove the back cover



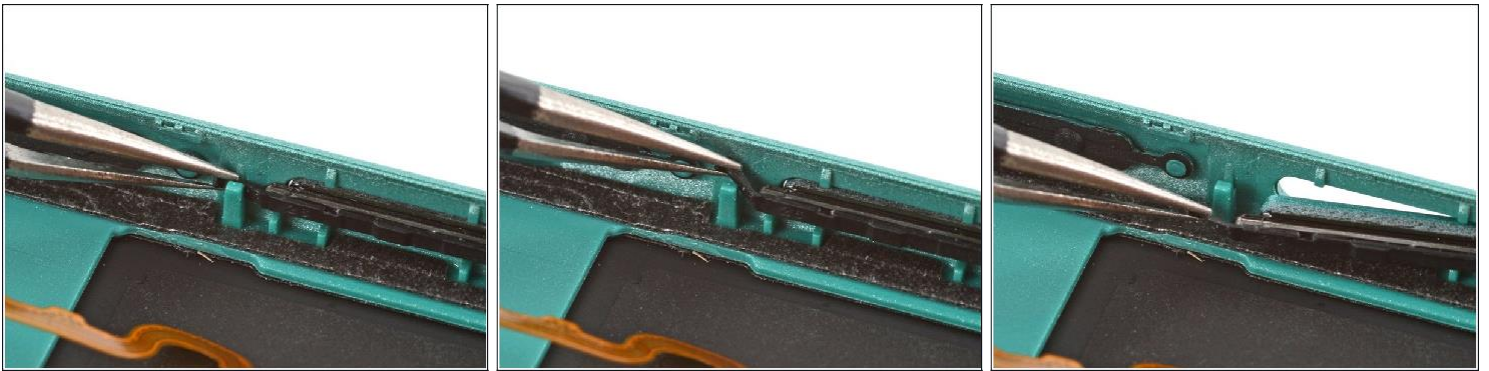
- Use the flat end of a spudger to pry up and disconnect the back cover press connector from the bottom edge of the motherboard.

Step 12



- Remove the back cover.

Step 13 – Remove the power button



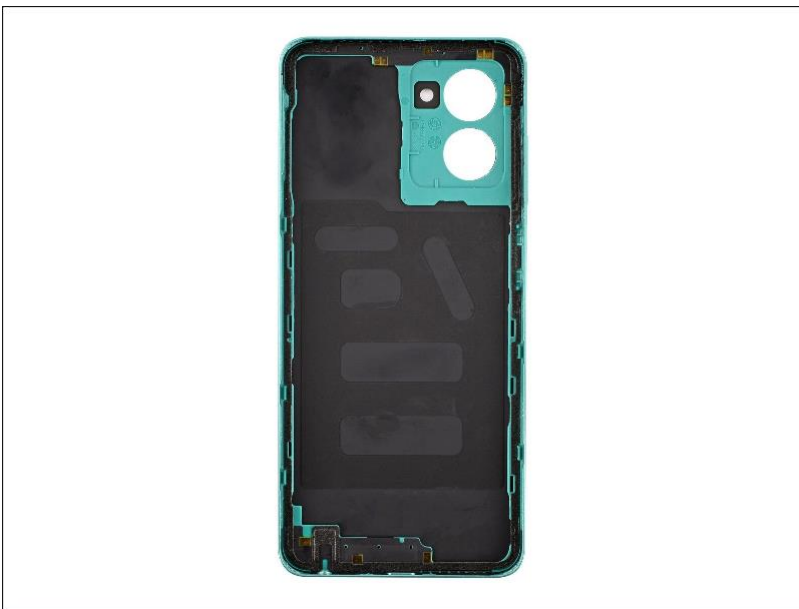
- ⓘ If your replacement back cover doesn't come with a power button pre-installed, follow the next two steps to remove and transfer it.
- Use a pair of tweezers to *gently* grip the power button's top rubber arm and lift it out of its slot.

Step 14



- Use tweezers to lift and remove the power button.
- ☑ Installing the power button can be very tricky and may take a few tries. First, insert the bottom rubber arm and cable together into their slot and push the button into its cutout. Then, slide the upper arm into its slot.

Step 15



- You're left with the back cover.

To reassemble your device, follow these instructions in reverse order.