

Spirent AION

Spirent TestCenter Automation Bundle

Overview

Spirent AION is a flexible delivery platform that enables users to achieve improved deployment and provisioning for all their cloud and network testing needs. It is designed to deliver ultimate flexibility in how Spirent TestCenter platforms are purchased and utilized.

The extended platform combines a wealth of industry-leading test solutions with a flexible licensing architecture to support a wide range of next-generation solution-based domain applications.

AION offers a centralized management hub to help leverage software and hardware functionalities across all lab users and locations for a simplified management and decision-making process:

- **Flexible purchasing options** available via subscription, consumption-based, and perpetual plans, with the ability to license different bandwidth, scale, and protocol bundles.
- **Flexible deployment options** offered include cloud-delivery, on-prem, and laptop-hosted licensing services.

Enhanced user serviceability delivers always-on platform services from auto-discovery and inventory management to user and workspace administration, notifications, and log aggregation.

Automation Bundle

The Spirent TestCenter Automation Bundle provides access to several Application Programming Interfaces (APIs) for test setup, execution and retrieving results. It allows for TestCenter to be easily integrated into user test beds leveraging their automation framework of choice.

The APIs define a common set of functions that reflect the architecture of the other TestCenter Bundles. Since they all share a common architecture and interface, once a user has learned to write a test program for one package, it is easy to write tests for other packages.

TestCenter automation APIs allow access to nearly all the functionality that is available via the standard graphical user interface and enable running tests for virtually unlimited test durations, with access to test configuration and results in real time during execution.

Features and Benefits

- Extremely powerful, ideal for high scale or high-performance testing
- Intuitive and easy to learn test setup & execution
- Feature-rich, covering the same features as the graphical user interface
- Up to date, synchronized with each TestCenter release
- No translation required, does not go through Tcl
- Long-term stability, does not change from release to release
- Wide range of programming languages supported (see Technical Specifications for details)

- **RESTful API**—Industry-first on a Layer 2 to Layer 7 test product
- **Support for C, C++, C#, Ruby, Java, Python** (both native and HLTAPI) and much more, unique to the market
- **Native Python**—eliminating the need for Tcl translation
- **Robot Framework integration**
- **High-level APIs (HLTAPI)**—for industry-leading coverage
- **Full Spirent TestCenter Functionality**—equivalent to native graphical user interface
- **Integrated Solution**—leverage support for automatic test case generation via Spirent iTest, and scheduling & test execution via Spirent Velocity to accelerate time to test

Spirent TestCenter IQ's sophisticated user interface framework is designed to improve the tester's efficiency and effectiveness

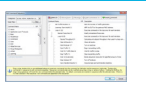
Automate Spirent TestCenter using popular languages such as Tcl, Perl and Python, or with advanced tools such as Spirent iTest, Velocity or Tworkbench

Benchmark and validate traffic and protocol performance quickly and easily using methodology-driven testing

Actionable Analytics



Automation



Methodology-Driven Web Applications



Spirent TestCenter API is a powerful interface for implementing custom test cases in a regression test environment, accelerating test case development and increasing team productivity

Common API & REST API

Spirent TestCenter™

Spirent Test Center's REST API offers flexibility to test and accelerate your innovation with any scripting or programming language, any OS, and either 32- or 64-bit hardware



Technical Specifications

Supported APIs	Description
Tcl	
PERL	For BSD and Linux
C	
JAVA	
Python	For Ubuntu Linux and Windows
C++	For Windows
HLTAPI	
Robot	
REST	

API Functions	Description
apply	Applies a test configuration to the Spirent TestCenter firmware
config	Sets or modifies the value of an attribute
connect	Establishes a connection with a Spirent TestCenter chassis
create	Creates an object in a test hierarchy
delete	Deletes an object in a test hierarchy
disconnect	Removes a connection with a Spirent TestCenter chassis
get	Retrieves the value of an attribute
help	Displays help text in the Tcl window
help list	Extends the help functionality to list and search for config types and commands
log	Writes a diagnostic message to the log file
perform	Invokes an operation
waitUntilComplete	Suspends your application until the sequence of commands has finished executing

Supported Tools
<ul style="list-style-type: none"> Spirent iTest Spirent Velocity

Ordering Information

Product Number	Description
AON-PB-AUTOMATION	AION Automation Bundle

Americas 1-800-SPIRENT
+1-800-774-7368 | sales@spirent.com

Europe and the Middle East
+44 (0) 1293 767979 | emeainfo@spirent.com

Asia and the Pacific
+86-10-8518-2539 | salesasia@spirent.com