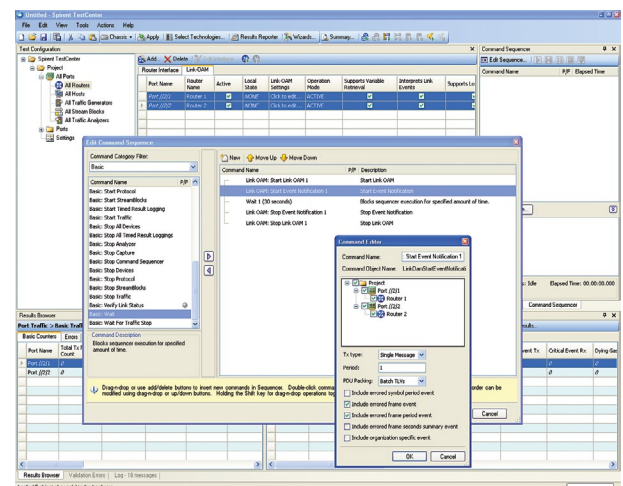
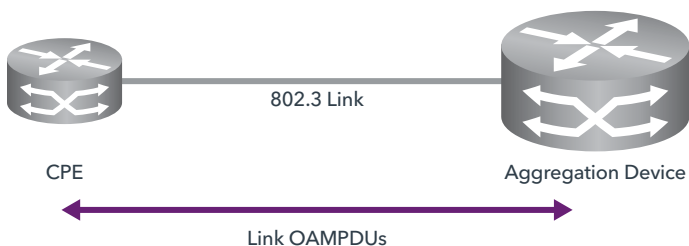


Ethernet Link OAM (802.3AH) Emulation Base Package A

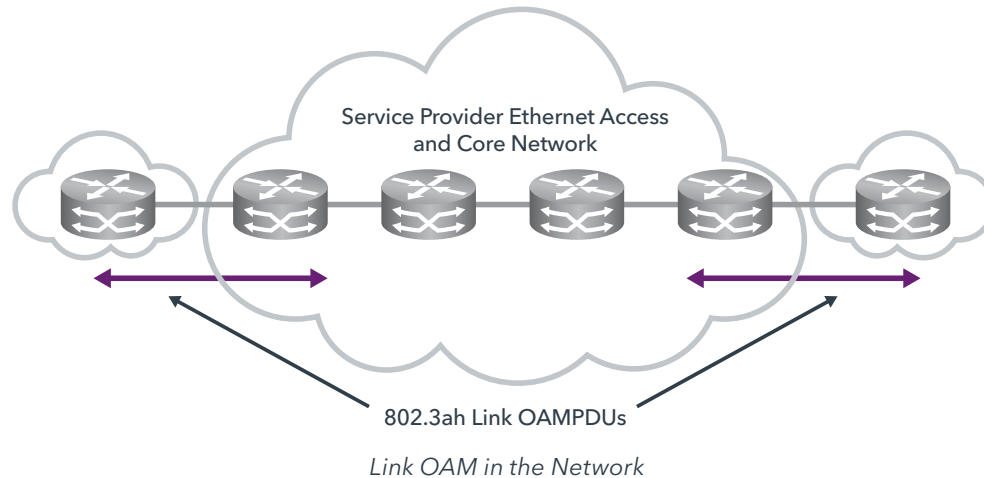
Applications

- For NEMs, testing will typically be at the development, product verification or technical marketing phases. For Service Providers, usage will be at the pre-deployment verification phase.

- Granular user control of Link OAM attributes, settings and messages quickly verify DUT capability and interoperability
- Grid editing of major parameters for all ports allows bulk set up and control of dozens of interfaces simultaneously for easily managing large test beds
- NoCode™ Automation capability in Command Sequencer allows non- and novice-scripters to build automated and repeatable Link OAM test cases



Link OAM Command Sequencer Configuration



Technical Specifications

Key Features

- Stateful Discovery support with user configured Local Information TLV
- User configurable Organization Specific Information TLVs, Variable Response Containers and Link Event TLVs
- Send Critical Link Events and Link Events
- Send Remote Loopback Control messages
- State indicators, message counters, event counters and event notification log for each port
- Create abnormal conditions for negative testing, including pausing Link OAM discovery state machine at specific states

Configuration Parameters

- Active or Passive mode
- Unidirectional support
- Loopback support
- Link Events support
- Variable Retrieval support
- Vendor Specific Information
- Max PDU size
- OUI
- OAM version
- Organization Specific Information TLVs content
- Variable Responses content
- Event Notification content

Configurable Timers

- OAMPDU
- Lost link
- Loopback response
- Variable response OAMPDU contents

Transmit Controls

- Critical Event
- Dying Gasp
- Link Fault
- Organization Specific OAMPDU with user defined TLVs
- Loopback Control OAMPDU
- Variable Request OAMPDU
- Event Notification OAMPDU with user defined Link Event TLVs

Negative Testing Controls

- User specified version number
- Override Local Satisfied and Remote Stable state indicators
- Disable OAMPDU transmission, Loopback response and Variable Response
- Pause Discovery state machine at user-specified state
- Applicable Standards—IEEE 802.3ah, Ethernet in the
- First Mile Section 57

Supported Modules & Platforms

- BPK-1067A is supported on all Spirent TestCenter Ethernet modules

Ordering Information

Ethernet Link OAM (802.3AH) Emulation Base Package A:
BPK-1067A

Contact Us

For more information, call your Spirent sales representative or visit us on the web at www.spirent.com/ContactSpirent.

www.spirent.com

Americas 1-800-SPIRENT
+1-800-774-7368 | sales@spirent.com

Europe and the Middle East
+44 (0) 1293 767979 | emeainfo@spirent.com

Asia and the Pacific
+86-10-8518-2539 | salesasia@spirent.com