

cyberflood

CyberFlood Advanced Mixed Traffic

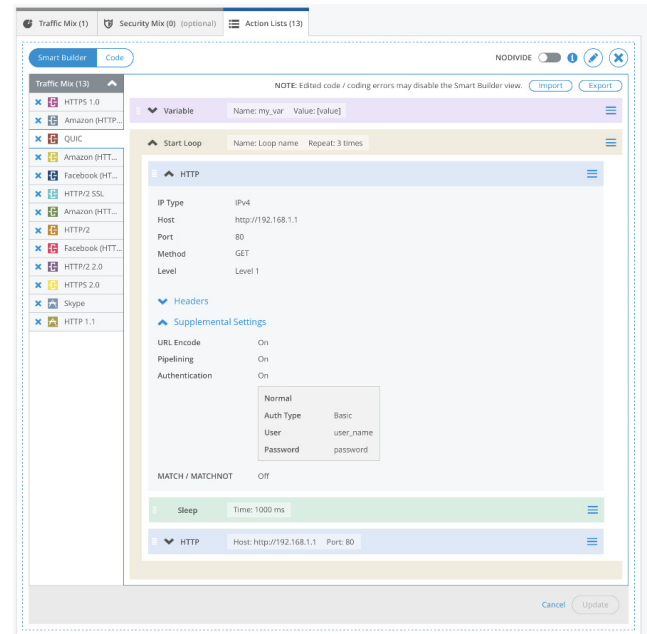
Introduction

The new CyberFlood Advanced Mixed Traffic brings new levels of advanced L4–7 testing capabilities to Spirent’s flagship security and performance assessment solution. The Advanced Mixed Traffic feature set is modeled on powerful functionality that has been available on Spirent’s Avalanche solution. Now web-based these advanced functions allow users to make custom and highly configurable tests and assessments quickly and easily.

Advanced Mixed Traffic provides the use of user action lists that allow test assessments to be created which will walk through a set of user application interactions for **HTTP, HTTP/2, HTTP/3, HTTPS, SMTP, POP3, IMAP4, FTP, DNS over TLS** and **HTTPS** protocols (additional protocol support will be added in future releases). Additionally, users can mix action list-oriented traffic with the database of CyberFlood TestCloud scenarios, creating comprehensive real-world load traffic conditions.

The configurability of action lists allows for assessments to be two-armed where CyberFlood acts as both client and server, or one-arm testing where CyberFlood acts as emulated clients to assess actual services – such as web applications, email services and more.

Advanced Mixed Traffic can perform Web application testing including Web services, ERP and CRM applications with extended application testing capabilities to support cookie, session ID, dynamic link, automatic follow redirect, additional header, think time, variable think time and variable assignment. The action list capability in CyberFlood Advanced Mixed Traffic provides a modern interface making it easier for the creation, editing and modification of comprehensive test plans.



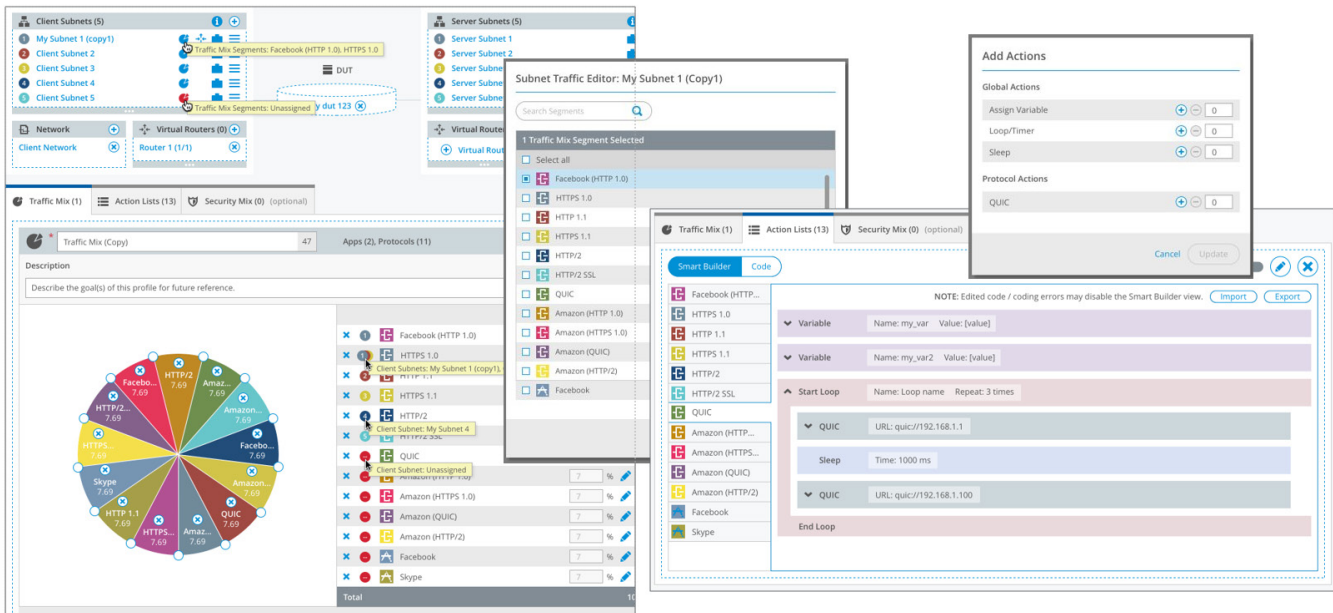
CyberFlood Advanced Mixed Traffic Test Action List Example

Advanced Mixed Traffic allows for variable parametrization allowing for different application operands for URL strings, authentication and many other protocol settings allowing for dynamic application assessments.

Users have control over network subnetting emulation and can map specific protocols to subnets allowing the segmentation of network load traffic. IP addresses can be entered or DHCP can be used to populate IP addresses from available DHCP services to create tests that align directly with the user’s environment. Virtual routers can also be employed to add emulated router hops on the client and or the server side creating exacting emulated network topologies.

Advanced Mixed Traffic provides other use cases including media testing and service verification from the user’s point of view with realistic voice calling, HTTP Adaptive Bitrate, and simulated Internet data traffic using static IP address or IP address, including support for VLAN and Stacked VLANs (i.e., Q-in-Q).

Enabling users by assigning subnets to pie slices and configuring the actions list



CyberFlow Advanced Mixed Traffic Test Topology Configuration

IPSec and SSL VPN Support

Advanced Mixed Traffic provides users the ability to realistically test their **IPSec and SSL VPN*** gateways and cloud-based VPN deployments. IPSec in Advanced Mixed Traffic provides complete performance assessment of gateways for both site to site and remote access tunnels to quickly understand and correct deficiencies before deployment. The use of real application protocols over encrypted tunnels is the best way to truly understand the gateway's overall capacities and effect on user experience.

* SSL VPN is currently supported for Cisco and Palo Alto Networks devices

CyberFlow Advanced Mixed Traffic also allows you to create comprehensive test plans with varied traffic and user actions including:

- Tens of thousands of TestCloud Apps supporting action list-oriented traffic
- Apply PPPoE/PPP to tests to validate user authentication and network access at scale
- With the optionally licensed Security Assessment options, validate security devices and policies with built-in security mixes. Add emulated applications, attacks, and malware from a database of tens of thousands of scenarios to Advanced Mixed Traffic test cases
- Define comprehensive topologies assessment Subnet Per Protocol (server)
- Full development action list editor to create precise user activities at scale

Requirements

The web browser minimum requirements to access CyberFlood controller are:

- Google Chrome (v34.0.1847.131)
- Firefox web browser (version 29.0)
- And minimum screen resolution is 1280 x 800

Spirent Services

Professional Services

- **Test lab optimization:** Test automation engineering services
- **Service deployment and service-level optimization:** Vendor acceptance testing, SLA benchmarking, infrastructure and security validation
- **Device scalability optimization:** POC high scalability validation testing

Education Services

- **Web-based training:** 24x7 hardware and software training
- **Instructor-led training:** Hands-on methodology and product training
- **Certifications:** SCPA and SCPE certifications

Implementation Services

Optimized new customer productivity with up to three days of on-site assistance

Ordering Information

Part Number	Description
CF-SW-ADV-C100-C200	Advanced Mixed Traffic for C100/C200 Appliance
CF-SW-ADV-CF20	Advanced Mixed Traffic for CF20 Appliances
CFV-SW-ADV	Advanced Mixed Traffic for CyberFlood Virtual

Other options are available please contact Spirent sales for more information.

About Spirent Communications

Spirent Communications (LSE: SPT) is a global leader with deep expertise and decades of experience in testing, assurance, analytics and security, serving developers, service providers, and enterprise networks. We help bring clarity to increasingly complex technological and business challenges. Spirent's customers have made a promise to their customers to deliver superior performance. Spirent assures that those promises are fulfilled. For more information visit: www.spirent.com

Americas 1-800-SPIRENT

+1-800-774-7368 | sales@spirent.com

Europe and the Middle East

+44 (0) 1293 767979 | emeainfo@spirent.com

Asia and the Pacific

+86-10-8518-2539 | salesasia@spirent.com