

*Singita*

KWITONDA LODGE

VOLCANOES NATIONAL PARK, RWANDA

*“A Singita experience leaves guests with a deeper understanding of the wonders of Africa, and an appreciation for our rare and magnificent wildlife.”*

**- LUKE BAILES  
FOUNDER & EXECUTIVE CHAIRMAN**

## Table of contents

## AN ENDURING COMMITMENT TO *safeguarding Africa's wildlife & wilderness*

Singita is a conservation and ecotourism brand that has been helping to preserve Africa's untouched natural spaces for almost three decades and we offer guests exceptional safari experiences at 16 award-winning lodges and camps across four countries.

In partnership with non-profit Funds & Trusts who implement strategic conservation projects in each of the regions in which we operate, our 100-year purpose is to preserve and protect large parts of African wilderness for future generations.

We are steadfast in our commitment to protect unique ecosystems, help recover critically endangered species and ensure no further extinction, benefit neighbouring communities under our care, and contribute positively to the reduction of GHG emissions through our climate commitments.

Travellers choose to stay at Singita because of the expansive space and beauty of our remote locations. They value the restorative serenity of these pristine wilderness areas, as well as the limited guest and vehicle numbers, extraordinarily consistent game viewing and exceptional & intuitive care that is taken of each guest during their stay. When they depart, they are transformed for life and deeply moved by their connection and contribution to the legacy of this continent.



*“Singita’s ethos of ‘touching the Earth lightly’ is no longer just a forward-thinking principle; it is imperative to our survival, and that of the land, wildlife and communities under our care.”*

**- INGE KOTZE  
GENERAL MANAGER CONSERVATION**



## CONSERVATION as a way of life

**Singita has been championing conservation in Africa from its inception.**

The critical conservation work we carry out with our non-profit Funds & Trusts is aimed at restoring, enhancing and protecting the biodiversity of the ecosystems under our care. Our sustainable conservation model helps to balance tourism in all of the regions in which we operate.



## DISCOVER RWANDA'S magical charm

Affectionately known as “The Land of a Thousand Hills”, this tiny East African gem might be small, but with its unspoilt forests, lush meadows and picture-perfect lakes, it’s a natural wonderworld with plenty to offer.

Situated on its northwestern border, Volcanoes National Park is home to more than one third of the remaining mountain gorillas in the world. It is here, sharing a 1.2km border with the Park, that Singita Kwitonda Lodge – the only lodge in such close proximity to the habitat of the gorillas – puts trekking experiences within easy reach.

As the perfect springboard for these encounters, Singita Kwitonda Lodge is also ideally located to discover the rest of Rwanda’s offerings – from the sights and sounds of the vibrant capital, Kigali, to Nyungwe National Park with its suspended canopy walk.

The country’s miraculous recovery from its painful past is testimony to the newfound solidarity, impressive work ethic and warmth of its people. This regenerative spirit has inspired the entire guest experience at Kwitonda Lodge, where guests are enveloped in a contemplative, nurturing space in which to appreciate the transformative experience of coming face to face with the forest’s gentle giants.





## WELCOME TO Singita Kwitonda Lodge

Boasting breathtaking views of the Sabyinyo, Gahinga and Muhabura volcanoes and surrounded by high-altitude forests, Singita Kwitonda Lodge offers an experience unlike any of Singita's other destinations.

With its exceptionally beautiful surroundings, environmentally conscious luxury and transformative, purpose-driven experiences, the lodge was designed to reflect the gentle, yet strong spirit of Rwanda's endangered mountain gorillas. It features eight contemporary suites, and Singita Volcanoes National Park also offers a private villa – Kataza House.

The interiors emphasise local design and handcrafted details adorn the carefully planned spaces. Private heated plunge pools and in- and outdoor fireplaces enhance the comfort of each suite and the main lodge features a convivial fire pit, interactive kitchen, 'bar-deli' and wine cellar.

# The Kwitonda experience

## ACCOMMODATION

- 7 x one-bedroom suites
- 1 x two-bedroom suite

## A LUXURY EXPERIENCE IN THE HEART OF AFRICA

Every creature comfort is taken care of with great amenities in every suite, including:

- Private heated plunge pools
- In- and outdoor showers and fireplaces
- A covered veranda
- An in-room massage treatment area
- Complimentary WiFi internet
- An iPad and media suite
- Guest mini bar

The lodge also features:

- A Gear Room with items that guests can borrow for trekking
- A generously stocked all-day 'bar-deli'
- A Conservation Room which houses a private collection of Robert Ian Martin ("Bob") Campbell's travel and photographic equipment. Campbell is widely known for his photographs of Dian Fossey and mountain gorillas

Children of all ages are welcome and tailor-made activities are available to keep them entertained. Please refer to the page listing our on-site activities.





## A BUCKET-LIST EXPERIENCE

# Gorilla Trekking

Singita Kwitonda Lodge provides a contemplative, nurturing space in which to appreciate the transformative experience of coming face to face with the forest's gentle giants.

For most guests, a gorilla trek is at the top of their list when they visit Rwanda and a stay at Singita Kwitonda Lodge allows them the privilege to encounter one of Africa's most majestic and gentle creatures in the wild, while immersed in the beauty of their pristine natural habitat.

Setting off early in the morning for the 7am briefing at Volcanoes National Park's headquarters, 10 minutes from Singita Kwitonda Lodge, guests are matched with a guide before starting their hike into the dense cloud forest.

The distance of each gorilla trek is varied, so depending on which gorilla family group guests are allocated to, the duration is anywhere from a couple of hours to a full day. Meals and lodge activities are flexible around each trek.

As the age requirement for gorilla treks is 15, children will be cared for at the lodge where a variety of supervised activities are on offer.

\* See 'THE FINER DETAILS' for more information on permits and costs.



## A UNIQUE EXPERIENCE in the heart of Africa

Apart from gorilla trekking, guests at Singita Kwitonda Lodge are privy to a whole host of unforgettable encounters. These range from pursuits within Volcanoes National Park to spending time around the lodge and discovering neighbouring communities.

### OFF-SITE ACTIVITIES

#### Activities at Volcanoes National Park:

##### Gorilla trekking

- 2-8 hours, depending on which gorilla family guests are allocated to

##### Golden monkey trekking

- 1-4 hours, depending on where the monkeys are located

##### Hike to Dian Fossey's gravesite

- 4-6 hours, depending on fitness levels

##### Mount Bisoke Crater Lake hike

- 6-8 hours, depending on fitness levels

##### Community Experience

Visit the small village of Gasura in the Kinigi sector, which is located 30 minutes from the lodge. This interactive tour includes a range of authentic Rwandese cultural experiences and glimpses of the local lifestyle.

- 2-3 hours

### PLEASE NOTE:

- Guests are encouraged to take approximately USD 50 in cash on gorilla treks, golden monkey treks or hikes in Volcanoes National Park. This is to pay a porter the minimum fee of USD 10 and to tip trackers and guides at the Park.
- We strongly recommend making use of porters – they help with everything from navigating slippery terrain and steep inclines to carrying backpacks during longer treks.
- The minimum age for gorilla treks and volcano hikes is 15 years; and 12 years for golden monkey treks.
- Permits for gorilla treks and golden monkey treks are limited and need to be purchased before travel to avoid disappointment.
- We strongly recommend that no activities at Volcanoes National Park should be booked on the day of departure.





## ON-SITE ACTIVITIES

### Included in rate:

- A dedicated interactive Conservation Room for Trek Orientations, more information on the gorillas, as well as photo-editing and multimedia facilities.
- Akarabo Nursery: guests can stroll through our farm-to-table vegetable garden that celebrates seasonal local produce and also participate in tree-planting as part of Singita's reforestation efforts in the area. Akarabo Nursery is also home to a unique pottery wheelthrowing experience, offering our guests a delightful combination of therapy and art.
- Word-class wine tastings.
- Various exercise options, including cycling, running, walking and yoga.
- Cooking lessons with our expert chefs in Kwitonda Lodge's fully equipped interactive kitchen.

### Additional charge:

- In-room massage treatments.
- Pottery: cost depends on which items are selected and applicable shipping charges.
- Experiences with local artisans:
  - Rwandan seamstress: learn more about local styles and order your own tailor-made item.
  - Stick carver: see how these beautifully carved items that are traditionally used on treks come to life and order your own as a memento.
  - Basket weaving: try your hand at weaving some beautiful local patterns, and buy items, should you wish.

### PLEASE NOTE:

The seamstress, stick carver and basket-weaving experiences are located at the Akarabo Nursery and take place daily between 2pm and 5pm. Costs vary depending on items selected.

## CHILDREN'S ACTIVITIES.

There is a dedicated childminder, who is available to entertain children while their parents are on gorilla treks or busy doing other activities at Volcanoes National Park. Please note that this service should be pre-arranged when booking your stay.

- Akarabo Nursery visits: Kids can explore the garden and also help to pick vegetables and plant new plants. There are gardening tools, gloves and nursery baskets for this activity.
- Cooking classes: Donning kids' aprons and little chefs' hats, kids can cook up a storm with one of our expertly trained chefs.
- Cycling and nature walks.
- Arts and crafts: Paint sets, art pads and colouring-in pencils are provided.
- Boardgames, cards, word games and puzzles. (There is also a selection of boardgames and cards in each suite).

## GRATUITY GUIDELINES.

Gratuities are entirely at guests' discretion. Please note that gratuities for Volcanoes National Park's trekking Guides and Trackers should be paid independently and in cash.





## Preparing for your journey

### WE RECOMMEND PACKING THE FOLLOWING

#### For the lodge:

- Pants, long-sleeved tops, T-shirts, a warm layer for the evenings, comfortable walking shoes/track shoes, sandals, a swimming costume/bathing suit, sun hat and sunglasses (hats are provided for guests to use during their stay). No formal wear is required at any of our lodges.
- Cotton clothing in neutral colours for outdoor walks and cycling. It's advisable to avoid white and dark colours as they tend to attract bugs.
- Sun block, lip balm and mosquito repellent. (These products are provided, but you are welcome to bring your own preferred brand).
- Video camera, camera, binoculars and a spare memory card. (Each suite is equipped with a pair of binoculars to use during your stay, but you're welcome to also pack your own).

#### For trekking:

Conditions on treks vary and it's best to be prepared for rainy and muddy conditions. Be sure to pack waterproof hiking boots with a good grip and ankle support, hiking chaps, gloves, a waterproof jacket/raincoat, hiking pants, thick socks to protect you against stinging nettles, gloves and long-sleeved tops

#### Technical trekking gear:

The following items for outdoor hiking and wet weather are available in the Gear Room at the main lodge. Guests can borrow these during their stay:

- Hiking chaps/gators - worn over shoes to just under the knee, protecting you against stinging nettles.
- A backpack (including a lunchbox) and rain cover.
- Trekking poles. Guests can also borrow or purchase locally made and carved poles from porters in Volcanoes National Park.

### SINGITA KWITONDA LODGE PROVIDES:

Complimentary comfort kits containing items such as sun cream, a sweat towel, tissues, a buff (required by Rwandan parks) and brown sanitary/toilet eco bags. Guests also receive a loaned backpack containing a lunch box, snacks and a water bottle.

# Preparing for your journey cont.

## HEALTH REQUIREMENTS

### **Malaria:**

All of Singita's properties are situated in malaria-risk areas. It is therefore essential that guests consult their medical practitioners regarding anti-malaria requirements prior to travel.

### **Yellow Fever:**

It is recommended that guests travel with a Yellow Fever certificate when visiting Rwanda, particularly if your route entails transiting through Kenya.

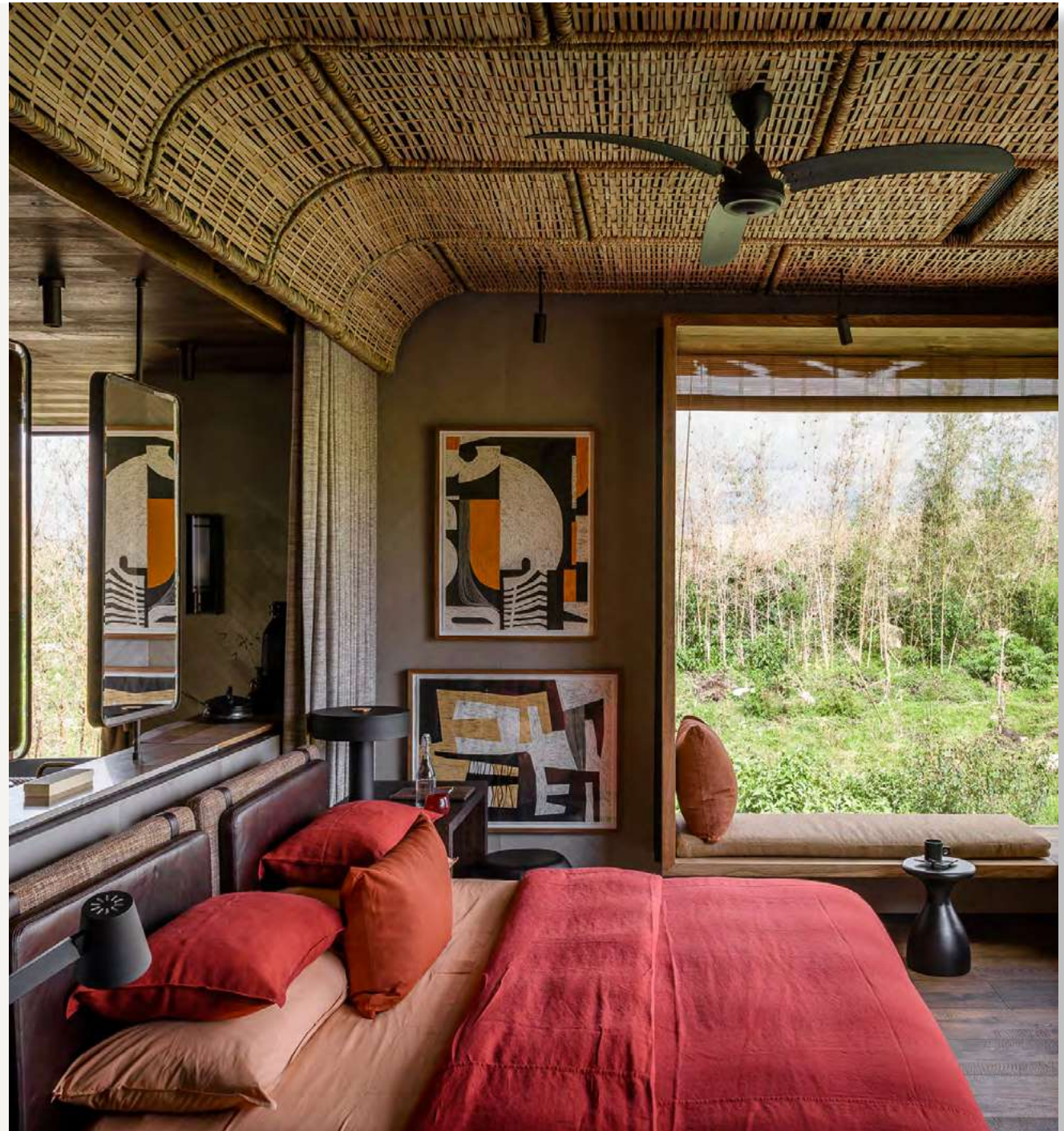
Although Rwanda is now considered low-risk and is no longer on the watch list, travellers are still advised to carry a yellow fever certificate when visiting Rwanda.

### PLEASE NOTE:

Requirements do change from time to time so please check for updates. Although we endeavour to have the most current information available, Singita cannot be held liable for any incorrect or outdated information.

### IMPORTANT NOTE:

The use of drones is strictly prohibited throughout Rwanda. Luggage is checked on arrival and drones may be confiscated at the discretion of customs officials.



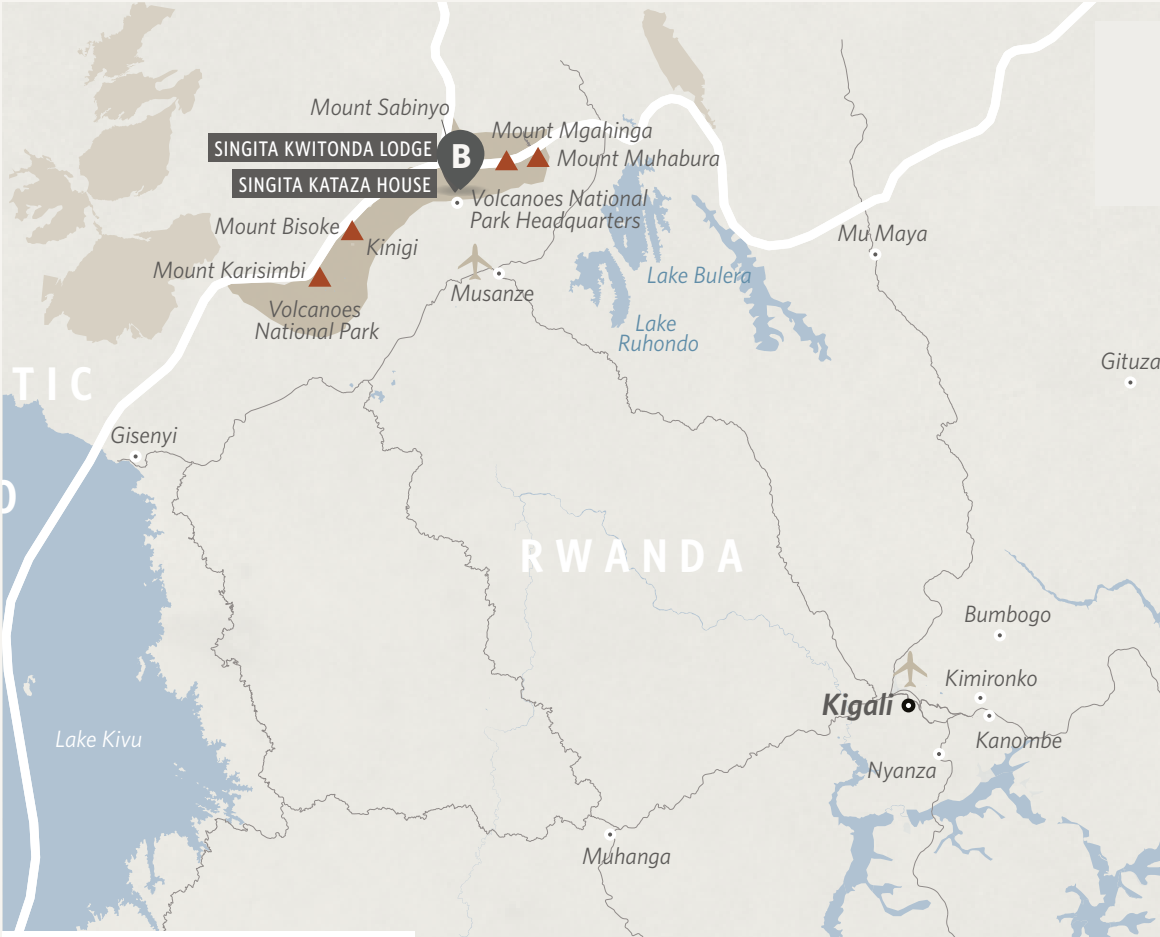
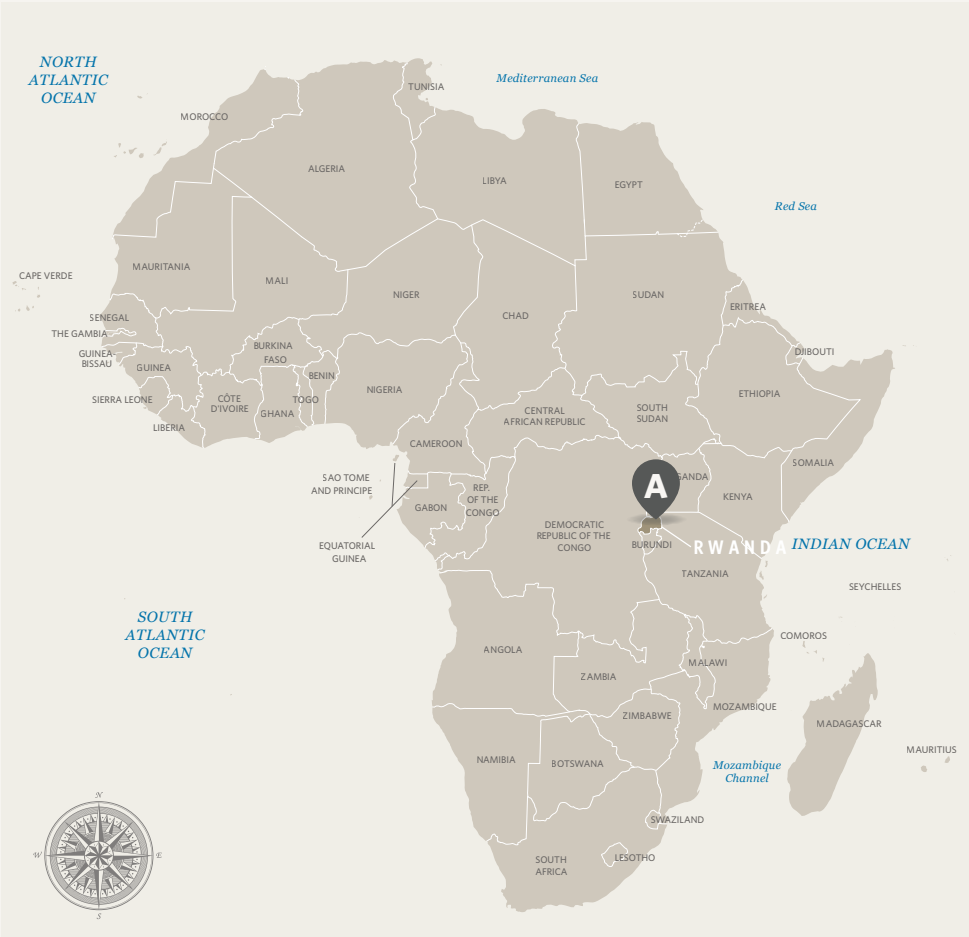
# Our location

## LOCATION OF VOLCANOES NATIONAL PARK [A] AND SINGITA KWITONDA LODGE [B]

Singita Kwitonda Lodge is set on 178-acres (72 hectares) and shares a 1.2km border with Volcanoes National Park in northwestern Rwanda. Relative to the population, and the intensive use of land for farming food crops, a 178-acre pocket of land in a country the size of Rwanda is highly prized.

PHYSICAL ADDRESS OF SINGITA KWITONDA LODGE

- Singita Volcanoes National Park
- Nyange Sector
- Kinigi
- Musanze
- Rwanda



## GETTING TO Singita Kwitonda Lodge

International flights arrive at Rwanda's capital city, Kigali. From there, Singita Kwitonda Lodge is approximately two and a half hours by road.

Alternatively, helicopter transfers are available from Kigali to the lodge.

Please note that guests are required to book and pay for a Driver Guide and vehicle for every day of their stay at Singita Volcanoes National Park to facilitate all activities as well as transfers to and from Kigali. Having a Driver Guide and vehicle ensures flexibility so that guests can plan their days according to preference.





## Weather and temperature

Rwanda is situated just south of the equator. Most of the country is situated on a plateau, around 1,500 metres above sea level. Rwanda's relatively high altitude provides it with cool nights and a pleasant tropical highland climate throughout the year, although there is also plenty of rain. The rainfall is often during the night or the early morning hours. Light cloud cover during the day helps to moderate the temperatures, but also occasionally brings light rain showers.

Rwanda's long rainy season lasts from March to May, when the rain is heavy and persistent. The long dry season is from June to mid-September. October to November is a shorter rainy season; followed by a short dry season from December to February.

The average temperature at Singita Volcanoes National Park is approximately 15°C (59°F) and the humidity can be quite high.



# The finer details

## OUR TARIFFS INCLUDE

- Luxurious en suite accommodation, breakfast, lunch and dinner daily, all drinks (including premium wines, spirits and liqueurs).
- Laundry services.

## OUR TARIFFS EXCLUDE

- Telephone calls.
- Tourism Development Levy.
- Massage treatments.
- Certain special meal requests.
- Transport to and from Singita Kwitonda Lodge.
- Any day trips or transfers to and from Singita Kwitonda Lodge.
- Permits for gorilla trekking.

## CHECK-IN/CHECK-OUT TIMES AND LODGE CLOSURE

- The lodge is open year-round.
- Check-in time: 13h00
- Check-out time: 11h00
- Please note that guests wishing to check in before 13h00 and/or check out after 11h00 are required to book an additional night at the Day Use Rate.

## PAYMENT OPTIONS

Visa, MasterCard and American Express cards accepted.

## OTHER T&C'S

- There is a minimum stay requirement of two nights year-round.
- The minimum age requirement for gorilla-trekking is 15.
- Gorilla trekking permits cost USD 1,500 per person per trek, subject to change without prior notice. Permits are subject to availability at the time of booking.
- If Singita is securing a permit on a guest's behalf, proof of payment for the permit needs to be received within 24 hours, and the guest's passport details no later than 60 days prior to travel.



*With sustainability at its core, Singita Kwitonda Lodge is in step with Singita's key focus to create low-impact tourism to help preserve large areas of African wilderness for future generations.*





Tel +27 21 683 3424

enquiries@singita.com

www.singita.com

# Lodges and Camps across 4 countries in Africa

## SOUTH AFRICA

**Kruger National Park:** Singita Lebombo and Sweni Lodges

**Sabi Sand:** Singita Castleton, Boulders and Ebony Lodges

## TANZANIA

**Grumeti:** Singita Sasakwa Lodge, Sabora Tented Camp, Faru Faru Lodge, Serengeti House, Kilima, Milele and Explore

**Lamai:** Singita Mara River Tented Camp

## ZIMBABWE

**Malilangwe Wildlife Reserve:**

Singita Pamushana Lodge and Malilangwe House

## RWANDA

**Volcanoes National Park:**

Singita Kwitonda Lodge and Kataza House