

*Singita*

FARU FARU LODGE

SERENGETI, TANZANIA

*"A Singita experience leaves guests with a deeper understanding of the wonders of Africa, and an appreciation for our rare and magnificent wildlife."*

**- LUKE BAILES  
FOUNDER & EXECUTIVE CHAIRMAN**



## Table of contents



## AN ENDURING COMMITMENT TO safeguarding Africa's wildlife & wilderness

Singita is a conservation and ecotourism brand that has been helping to preserve Africa's untouched natural spaces for almost three decades and we offer guests exceptional safari experiences at 16 award-winning lodges and camps across four countries.

In partnership with non-profit Funds & Trusts who implement strategic conservation projects in each of the regions in which we operate, our 100-year purpose is to preserve and protect large parts of African wilderness for future generations.

We are steadfast in our commitment to protect unique ecosystems, help recover critically endangered species and ensure no further extinction, benefit neighbouring communities under our care, and contribute positively to the reduction of GHG emissions through our climate commitments.

Travellers choose to stay at Singita because of the expansive space and beauty of our remote locations. They value the restorative serenity of these pristine wilderness areas, as well as the limited guest and vehicle numbers, extraordinarily consistent game viewing and exceptional & intuitive care that is taken of each guest during their stay. When they depart, they are transformed for life and deeply moved by their connection and contribution to the legacy of this continent.



*“Singita’s ethos of ‘touching the Earth lightly’ is no longer just a forward-thinking principle; it is imperative to our survival, and that of the land, wildlife and communities under our care.”*

**- INGE KOTZE  
GENERAL MANAGER CONSERVATION**





## CONSERVATION as a way of life

**Singita has been championing conservation in Africa from its inception.**

The critical conservation work we carry out with our non-profit Funds & Trusts is aimed at restoring, enhancing and protecting the biodiversity of the ecosystems under our care. Our sustainable conservation model helps to balance tourism in all of the regions in which we operate.

### THE GRUMETI FUND

In Tanzania, Singita partners with the Grumeti Fund, a non-profit organization carrying out wildlife conservation and community development work in the western corridor of the Serengeti ecosystem, where Singita Sabora Tented Camp is situated. The Grumeti Fund works tirelessly to ensure the long-term sustainability of the 350,000 acre Singita Grumeti and their vision is a world in which people and wildlife live together sustainably, forever.





## WELCOME TO Singita Faru Faru Lodge

Inspired by the fusion of traditional African craft with contemporary comfort & simplicity, Singita Faru Faru Lodge perfectly reflects its extraordinary wilderness setting in the Serengeti.

The main living and dining areas are expansive, with enclosed dining and lounge areas creating cool places of retreat. An interactive kitchen adds an interesting dynamic to the dining experience, while open seating areas ensure closer engagements with nature. Central areas, including a Singita signature 'bar-deli', encourage guests to come together to eat, drink and enjoy the breathtaking views.

Shaped organically with its main focus on the waterhole, the architecture makes a bold, but magical statement enhanced by the creative use of locally sourced natural materials. The lodge boasts a back-to-basics colour palette of bone, ivory, nude and clay, and perfectly combines rustic elements with bush appeal, while a fresh and clean-lined modernity allows the prolific wildlife to take centrestage.





# The Faru Faru experience

## ACCOMMODATION

Singita Faru Faru Lodge has 9 suites in total:

- 7 x one-bedroom suites.
- 1 x family suite (2 bedrooms, ideal for 2 adults and 2 children).
- 1 x two-bedroom suite (ideal for 4 adults, also includes a private infinity pool).

## ACTIVITIES

- Daily morning and afternoon game drives with your Field Guide.
- Afternoon drives conclude with a spot-lit evening return to reveal the elusive magic of nocturnal Africa.
- For the adventurers, there are guided safari walks (for guests 16 and older).
- Stargazing, bird watching, swimming and board games can be arranged.
- Balloon safaris (additional costs apply).
- A range of unique and mindfully curated experiences – from intimate wine tastings to cooking classes, meditation and yoga.
- Join in a community visit – it's the perfect way to experience Tanzanian culture and learn about the positive impact that tourism has made in the region.

## A UNIQUE GAME-VIEWING EXPERIENCE

During your stay you are likely to see a great variety of wildlife, including:

- |                 |                  |           |                  |
|-----------------|------------------|-----------|------------------|
| • bat-eared fox | • Colobus monkey | • gazelle | • Maasai giraffe |
| • buffalo       | • eland          | • leopard | • topi           |
| • cheetah       | • elephant       | • lion    | • wildebeest     |







# Preparing for your journey

## SUGGESTED PACKING GUIDE

Cotton clothing in neutral colours such as green, khaki and grey is recommended for game drives and walking safaris. It is advisable to avoid white and dark colours as they tend to attract bugs. If it rains during a game drive, waterproof ponchos will be provided. No formal wear is required at any of our lodges.

### Use the weather as your guide:

- **October – April:**  
Casual summer clothing (shorts and lightweight shirts) with a warm jersey or sweater for the cooler morning and evening temperatures.
- **May – September:**  
Casual lightweight clothing with a very warm parka or windbreaker jacket for the very cold mornings and nights.

### To ensure a comfortable safari experience, we recommend that you bring the following:

- Comfortable walking or track shoes, or hiking boots for walks as well as sandals to wear around the lodge.
- Activewear if you plan on using the facilities at the fitness centre or your private in-room fitness area.
- A swimming costume or bathing suit, sun block, sun hat, sunglasses, lip balm, mosquito repellent. (Lip balm and insect repellent will be provided, but if you prefer a particular brand, you are welcome to bring it along.)
- Video camera, camera, binoculars and extra memory cards.

## HEALTH REQUIREMENTS

Please consult your doctor or physician before travelling.

- Singita Faru Faru Lodge is situated in a malaria-risk area. It is therefore essential that you consult your medical practitioner regarding anti-malaria requirements prior to your trip.
- Vaccinations: Guests are strongly advised to check the latest information with regard to vaccinations for travel to Tanzania with their local travel clinic or travel agent.

# Our location

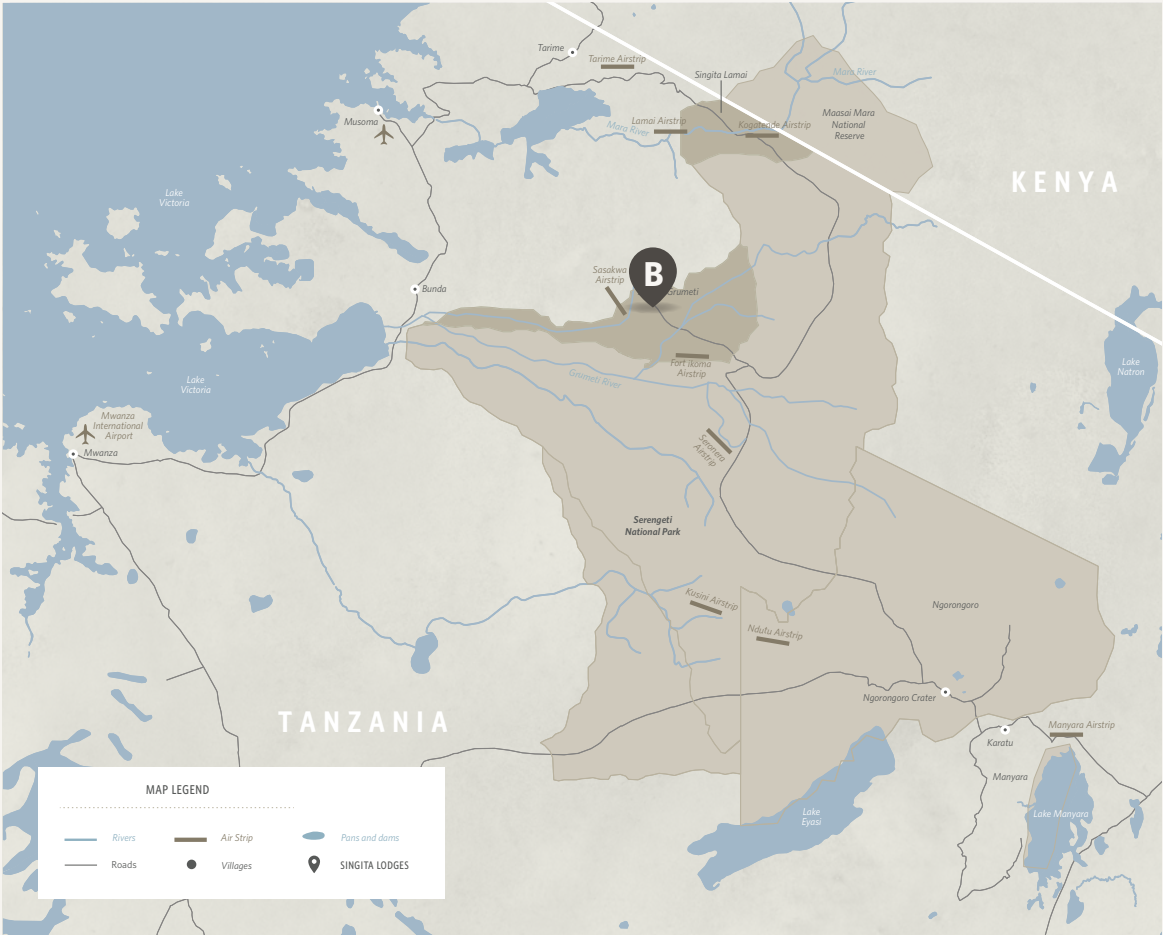


## LOCATION OF SINGITA GRUMETI [A]

Spanning over 350,000 acres of untouched wilderness, Singita Grumeti is located in northern Tanzania, forming part of the Serengeti Mara ecosystem. Singita Grumeti offers visitors a front-row seat to the Great Migration as well as countless other wildlife experiences all year around. With a landscape that combines grassy plains with riverine forests and thorny scrubland, the area is home to a huge variety and vast number of big game and other iconic African animals.

## LOCATION OF SINGITA FARU FARU LODGE [B]

This riverside lodge is built on a gently sloping hill, perfectly positioned on the renowned migratory route – a place where you can quite literally, expect the unexpected. Informal, unconventional and surprising at every turn, Singita Faru Faru Lodge is a mix of contemporary, organic style and the quirky practicality of a traditional botanist’s camp. Such close proximity to the river and the plains affords guests the unique opportunity to experience a very close interaction with the wilderness.





## GETTING TO Singita Faru Faru Lodge

### BY AIR

We can arrange scheduled flights or private charters. All flights land at the Singita Sasakwa airstrip in the Grumeti Reserve. For detailed information and bookings, please contact Singita Reservations.

- On scheduled flights, the weight of luggage is restricted to 15 kg (33 lb) for checked baggage.
- On arrival, guests are met by a Singita staff member and driven to Faru Faru Lodge.
- Private aircraft pilots land at their own risk and must adhere to strict aviation protocols.

### FLIGHT DURATION

- Kilimanjaro International Airport – Singita: approximately 1 hour 15 minutes (if direct)
- Arusha Airport – Singita: approximately 1 hour (if direct)

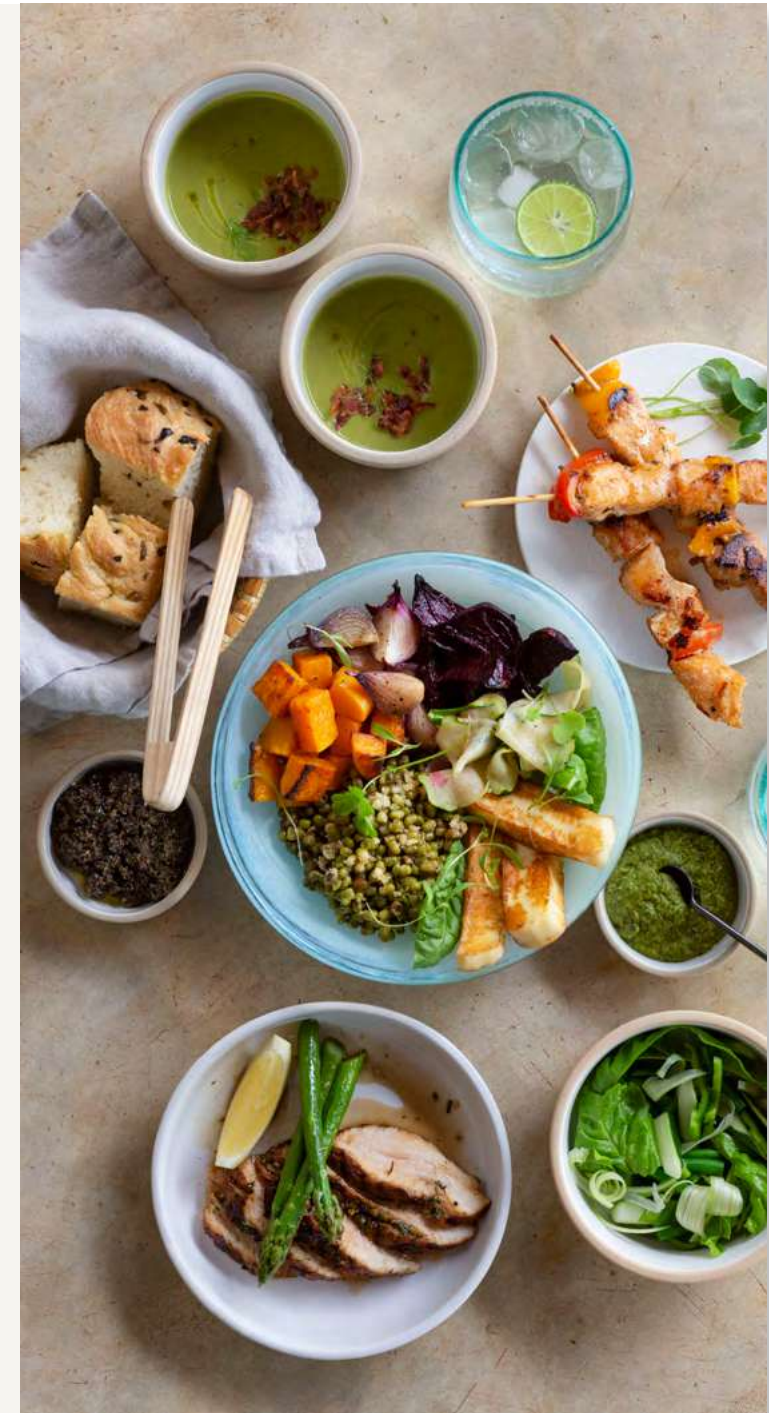




## A LUXURY EXPERIENCE in the heart of Africa

**Every creature comfort is taken care of with these well-considered amenities and services:**

- Singita Boutique & Gallery.
- Restorative treatments are available at the wellness centre, or in your room.
- Two swimming pools in the main lodge area.
- A fully equipped fitness centre.
- A television in the lounge tent of the camp.
- Complimentary internet access (WiFi). Due to the remote location of the lodge, the wireless connection can be slow and intermittent.
- Mobile phone signal available but it is very limited.
- Electricity supply is 220V AC. Converters are also available. Hair dryers are supplied in each suite.
- Children of all ages are most welcome and we offer activities tailor-made for families. In the interest of safety, childrens' participation in game activities will be at the discretion of your guide.
- Halaal food is available – please book in advance.







# Weather and temperature

## BEST TIME TO GO ON SAFARI

East Africa is equatorial, so the climate is fairly constant, making Singita Grumeti a perfect year-round destination. The Green Season, from November to May, offers long, warm days with short downpours of rain, which transforms the landscape into lush green grasslands teeming with diverse wildlife. June to October is traditionally the migration season, when the days are warm, sunny and dry.

## AVERAGE SEASONAL TEMPERATURE RANGES

SPRING	SUMMER	AUTUMN	WINTER
(Sept - Nov)	(Dec - Feb)	(March - May)	(June - Aug)
Low 20 °C / 68 °F	Low 23 °C / 73 °F	Low 22 °C / 72 °F	Low 18 °C / 64 °F
High 30 °C / 86 °F	High 31 °C / 88 °F	High 31°C / 88 °F	High 29 °C / 84 °F

The above temperatures are monthly averages. The actual daily temperatures may differ from these.



# The finer details

## OUR TARIFFS INCLUDE

- Luxurious en-suite accommodation, breakfast, lunch and dinner daily, all drinks (including premium wines, spirits and liqueurs).
- Game drives and walking safaris accompanied by an experienced guide.
- Return road transfers between the Sasakwa airstrip and the lodge.
- Telephone calls.
- Laundry service.

## OUR TARIFFS EXCLUDE

- Air transfers to and from the lodge.
- Transport to and from Singita Grumeti or Singita Lamai. Please see our flights & access documentation.
- Any day trips or transfers from Singita Grumeti into the Serengeti National Park.
- Wellness treatments.
- Certain special meal requests.
- Purchases from the Singita Boutique & Gallery.
- Wildlife fee or park fee.
- Tourism Development Levy.

## CHECK-IN/CHECK-OUT TIMES AND LODGE CLOSURE

- The lodge is open year-round.
- Check-in time: 13h00.
- Check-out time: 11h00.

## PAYMENT OPTIONS

Visa, MasterCard and American Express cards accepted.





Whether standing in awe of the Great Migration, experiencing the African wilderness with loved ones or finding relief and escape from everyday life, this epic landscape and the astonishing diversity of animals within it will leave you humbled and restored.





Tel +27 21 683 3424  
enquiries@singita.com  
www.singita.com

# Lodges and Camps across 4 countries in Africa

## SOUTH AFRICA

**Kruger National Park:** Singita Lebombo and Sweni Lodges

**Sabi Sand:** Singita Castleton, Boulders and Ebony Lodges

## TANZANIA

**Grumeti:** Singita Sasakwa Lodge, Sabora Tented Camp, Faru Faru Lodge, Serengeti House, Milele and Explore

**Lamai:** Singita Mara River Tented Camp

## ZIMBABWE

**Malilangwe Wildlife Reserve:**  
Singita Pamushana Lodge and Malilangwe House

## RWANDA

**Volcanoes National Park:**  
Singita Kwitonda Lodge and Kataza House