



# Singita

KILIMA

SERENGETI, TANZANIA





*“A Singita experience leaves guests with a deeper understanding of the wonders of Africa, and an appreciation for our rare and magnificent wildlife.”*

**- LUKE BAILES  
FOUNDER & EXECUTIVE CHAIRMAN**

## Table of contents

AN ENDURING COMMITMENT TO SAFEGUARDING AFRICA'S WILD PLACES AND WILDLIFE	3
INSPIRED BY CONSERVATION & COMMUNITY	4
WELCOME TO SINGITA KILIMA	5
A PRIVATE SANCTUARY	6
VILLA FACILITIES	7
THE KILIMA EXPERIENCE	8
PREPARING FOR YOUR JOURNEY	9
OUR LOCATION	10
GETTING TO SINGITA KILIMA	11
A LUXURY EXPERIENCE IN THE HEART OF AFRICA	12
WEATHER AND TEMPERATURE	13



## AN ENDURING COMMITMENT TO safeguarding Africa's wild places and wildlife

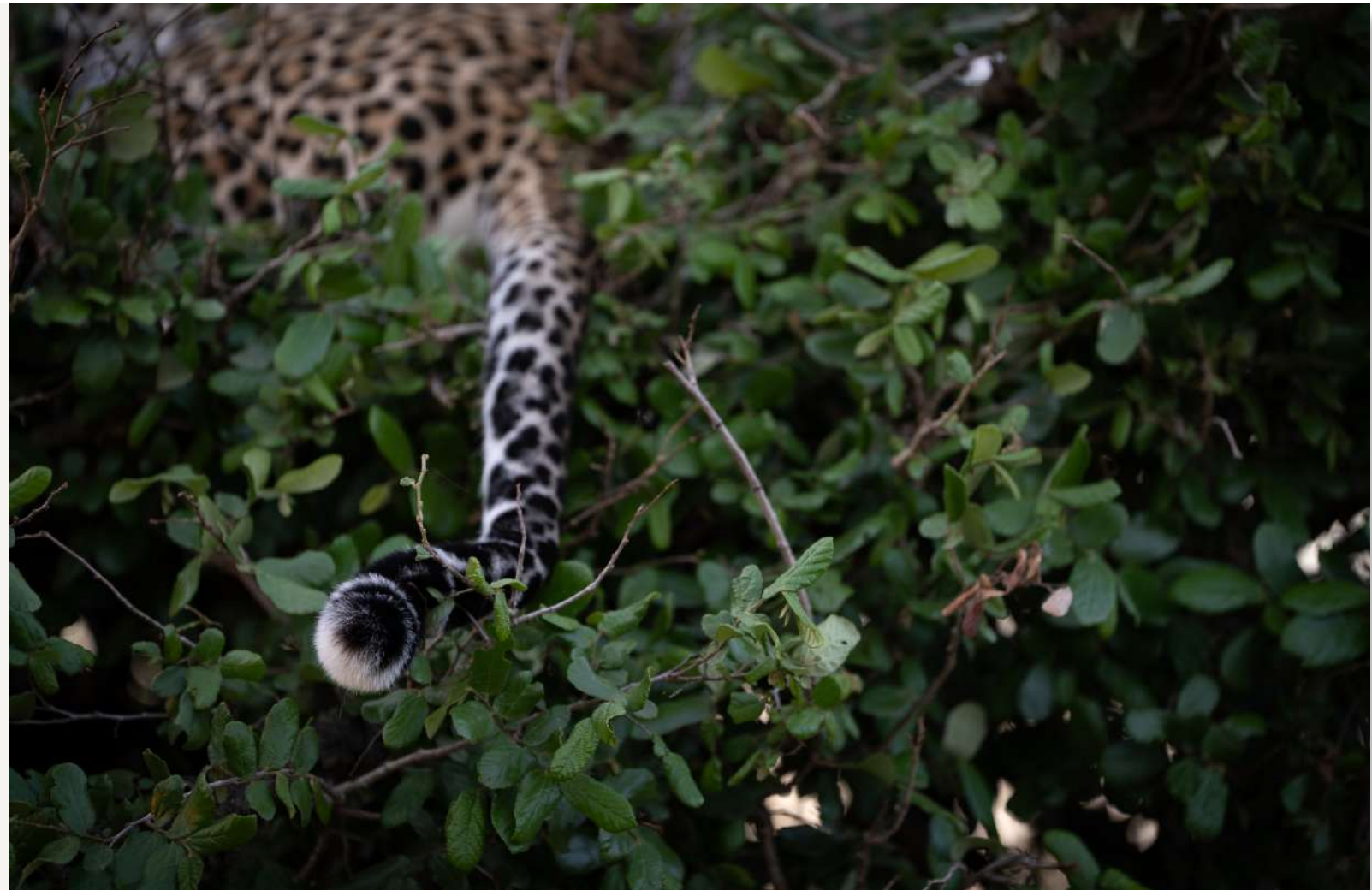
Singita is a pioneering eco-tourism brand that has been at the forefront of sustainably driven luxury travel for 30 years.

Our exceptional safari offering, across four countries and 16 award-winning lodges and camps encompasses a wide range of experiences, all of which are underpinned by our 100-year purpose to preserve the land under our care.

By playing a role in protecting these wilderness areas, and the spectrum of life they contain through an abiding and driving commitment to conservation, we endeavour to create a legacy that protects the landscape, safeguards the wildlife, and supports the communities who exist in this ecosystem together, ensuring that future generations too can benefit from this precious natural heritage.

Limited guest and vehicle numbers, excellent game viewing and personalised service are complemented by the passionate care, commitment to excellence and sense of community that our teams uphold.

Guests who stay at Singita are forever changed, not merely as a result of the awe they feel on encountering the raw natural beauty of our remote locations, but because of the sense of connection they encounter, and the feeling of wholeness they leave with.



*“Singita’s ethos of ‘touching the Earth lightly’ is no longer just a forward-thinking principle; it is imperative to our survival, and that of the land, wildlife and communities under our care.”*

**- INGE KOTZE  
GENERAL MANAGER CONSERVATION**





## INSPIRED BY conservation & community

Working with non-profit Funds and Trusts, who implement strategic initiatives and projects in each region, we remain true to our fundamental conservation principles and our goal to create exceptional experiences driven by purpose.

The work done by these Funds and Trusts is guided by a goal of restoring, protecting, and ultimately expanding the biodiversity of the ecosystems that make up our reserves and concessions. Our model of sustainable ecotourism is designed to support and further these initiatives.

### GRUMETI FUND

In Tanzania, Singita partners with the Grumeti Fund, a non-profit organization carrying out wildlife conservation and community development work in the western corridor of the Serengeti ecosystem, where Singita Kilima is situated. The Grumeti Fund works tirelessly to ensure the long-term sustainability of the 350,000 acre Singita Grumeti and their vision is a world in which people and wildlife live together sustainably, forever.



## WELCOME TO Singita Kilima

Sheltered by a forest of ancient trees on a remote hillside overlooking the Serengeti plains, Singita Kilima is grounded by nature with earthy tones, patterned textures and cosy, modern comforts. Providing a refined sense of ease and flow, this authentically African villa offers guests intimate yet wide open spaces in which to celebrate the freedom of being part of the magnificent wilderness that is home to the Great Migration.

With five suites that vary in size and colour palette and a mix of indoor and outdoor spaces that frame the iconic grasslands below, Kilima offers seclusion and privacy while igniting a sense of playfulness.

An infinity swimming pool anchors the spacious outdoor areas. Guests can unwind on the wooden decks or in the various lounges, enjoy watching movies in the media room or stay active in the fitness centre.

These amenities invite additional opportunities for relaxation and connection after spending time on game drives or bush walks and being immersed in a timeless landscape.





## A private sanctuary just for you

Accommodating up to 10 guests in five beautifully appointed suites - Kilima offers the perfect private adventure for family and friends.

The main and junior suites have a private heated plunge pool and mini-fridge. Guests can access the bar-deli around the infinity swimming pool any time of day for healthy drinks and snacks.

A variety of cosy communal spaces present opportunities to connect, relax and appreciate the exquisite views. Morning and afternoon games drives are always a highlight, with a number of additional activities on offer.

There's also a fully equipped on-site fitness centre, and guests can enjoy a variety of holistic treatments as part of the wellness journey.

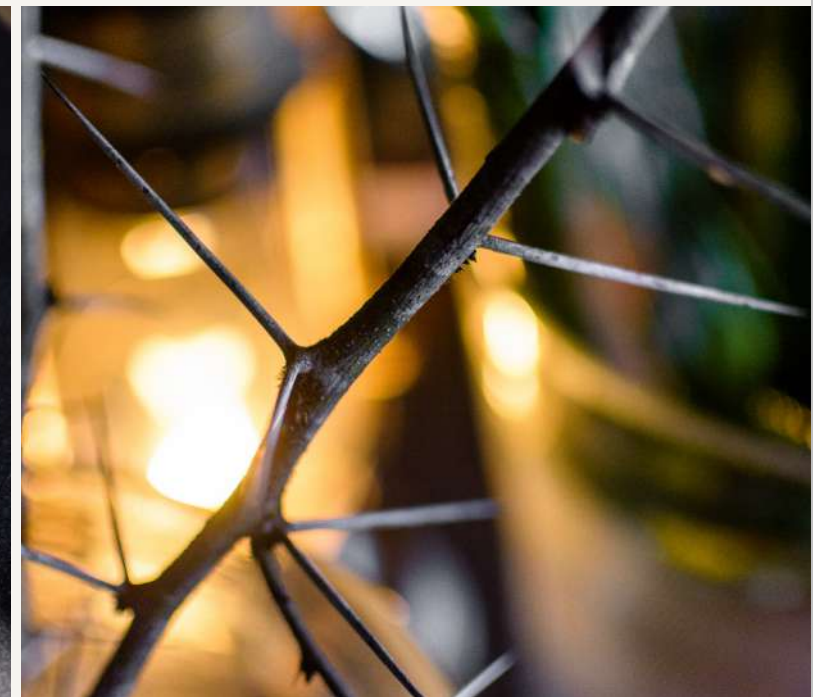




# Villa facilities

## KEY FEATURES

- Accommodation for up to 10 guests.
- Five guest suites - a main suite, a junior suite and three additional suites.
- Spacious interior lounges with fireplaces, dining areas, floor-to-ceiling windows with breathtaking views, sitting areas, and writing desks.
- Expansive outdoor lounges with fireplaces, fully stocked bars, dining areas, daybeds and loungers.
- A homely living/dining area, kitchen, media room, and fully equipped fitness centre.
- Full-time dedicated staff including a field guide, chef, a butler and housekeeping team.
- WiFi connectivity.
- A beautiful infinity pool overlooking the Serengeti plains and two private heated plunge pools.
- Indoor and outdoor fireplaces and fire pits.
- Boma with outdoor covered kitchen for dining al fresco.



# The Kilima experience

## ACCOMMODATION

Singita Kilima features five different suites, each drawing inspiration from nature and Africa.

- 1 x main suite
- 1 x junior suite
- 3 x one-bedroom suites

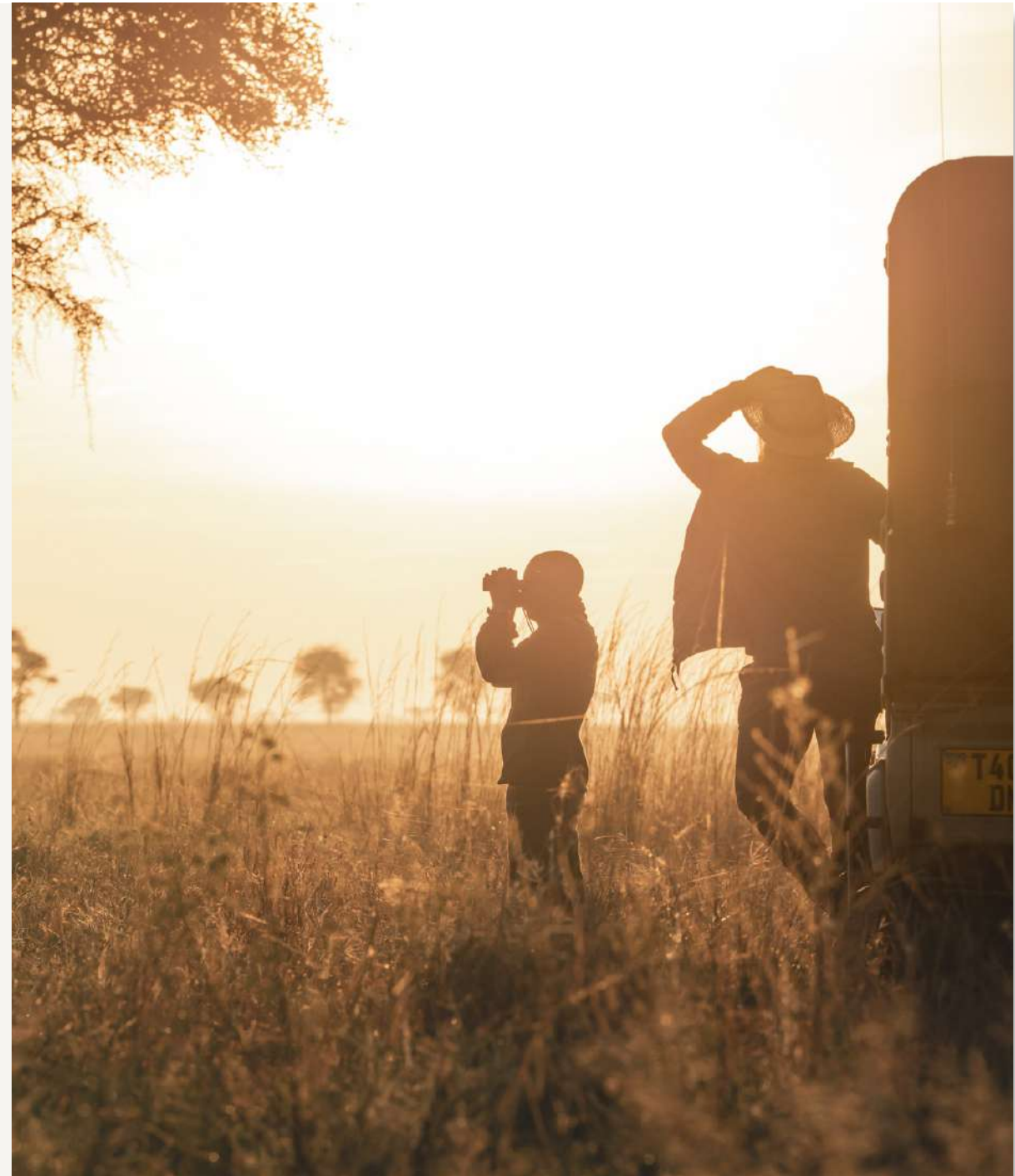
## ACTIVITIES

- Daily morning and afternoon game drives with your dedicated field guide.
- Afternoon drives conclude with an evening return revealing the elusive magic of nocturnal Africa.
- For the adventurous, there are guided walking safaris (for guests 16 and older).
- Media room and a fully equipped fitness centre.
- Stargazing, swimming and board games.
- Join in a community visit - it's a meaningful way to experience Tanzanian culture and learn about the positive impact that tourism has made in the region.

## A UNIQUE GAME-VIEWING EXPERIENCE

During your stay you are likely to see a great variety of wildlife, including:

- |                 |                  |           |                  |
|-----------------|------------------|-----------|------------------|
| • bat-eared fox | • Colobus monkey | • gazelle | • Maasai giraffe |
| • buffalo       | • eland          | • leopard | • topi           |
| • cheetah       | • elephant       | • lion    | • wildebeest     |





# Preparing for your journey

## SUGGESTED PACKING GUIDE

Cotton clothing in neutral colours such as green, khaki and grey is recommended for game drives and walking safaris. It is advisable to avoid white and dark colours as they tend to attract bugs. If it rains during a game drive, waterproof ponchos will be provided. No formal wear is required at any of our lodges.

### Use the weather as your guide:

- **October – April:**  
Casual summer clothing (shorts and lightweight shirts) with a warm jersey or sweater for the cooler morning and evening temperatures.
- **May – September:**  
Casual lightweight clothing with a very warm parka or windbreaker jacket for the very cold mornings and nights.

### To ensure a comfortable safari experience, we recommend that you bring the following:

- Comfortable walking or track shoes, or hiking boots for walks as well as sandals to wear around the villa.
- Activewear if you plan on using the facilities at the fitness centre or your private in-room fitness area.
- A swimming costume or bathing suit, sun block, sun hat, sunglasses, lip balm, mosquito repellent. (Lip balm and insect repellent will be provided, but if you prefer a particular brand, you are welcome to bring it along.)
- Video camera, camera, binoculars and extra memory cards.

## HEALTH REQUIREMENTS

Please consult your doctor or physician before travelling.

- Singita Kilima is situated in a malaria-risk area. It is therefore essential that you consult your medical practitioner regarding anti-malaria requirements prior to your trip.
- Vaccinations: Guests are strongly advised to check the latest information with regard to vaccinations for travel to Tanzania with their local travel clinic or travel agent.





# Our location

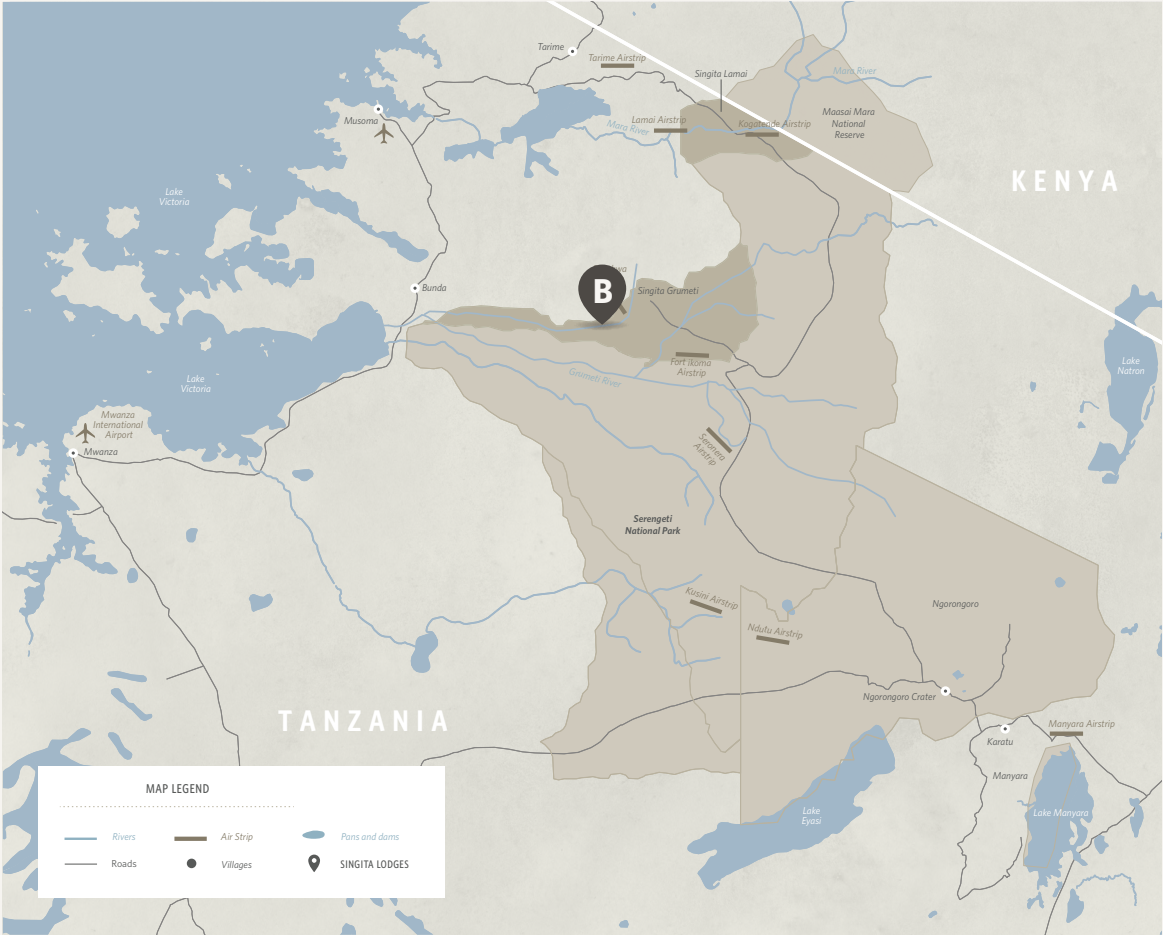


## LOCATION OF SINGITA GRUMETI [A]

Spanning over 350,000 acres of untouched wilderness, Singita Grumeti is located in northern Tanzania, forming part of the Serengeti Mara ecosystem. Singita Grumeti offers visitors a front-row seat to the Great Migration as well as countless other wildlife experiences all year around. With a landscape that combines grassy plains with riverine forests and thorny scrubland, the area is home to a huge variety and vast number of big game and other iconic African animals.

## LOCATION OF SINGITA KILIMA [B]

Singita Kilima is cocooned by nature and nestled under ancient trees, high on the slopes of Sasakwa Hill in the heart of Singita Grumeti. This African retreat is surrounded by uninterrupted views of the Serengeti in a pristine wilderness known for its incredible biodiversity and excellent game viewing, no matter what the season.





## GETTING TO Singita Kilima

### BY AIR

We can arrange scheduled flights or private charters. All flights land at the Singita Sasakwa airstrip in the Grumeti Reserve. For detailed information and bookings, please contact Singita Reservations.

- On scheduled flights, the weight of luggage is restricted to 15 kg (33 lb) for checked baggage.
- On arrival, guests are met by a Singita staff member and driven to Kilima.
- Private aircraft pilots land at their own risk and must adhere to strict aviation protocols.

### FLIGHT DURATION

- Kilimanjaro International Airport – Singita: approximately 1 hour 15 minutes (if direct)
- Arusha Airport – Singita: approximately 1 hour (if direct)





## A LUXURY EXPERIENCE in the heart of Africa

### Every creature comfort is taken care of with these well-considered amenities and services:

- Private fine dining and meals on request
- Tailormade wine tastings and a fully stocked cellar with award-winning wines
- Expansive living spaces, kitchen & various fully stocked 'bar-delis' with freshly made delicacies all day
- Massage treatments on decks and in suites
- Restorative wellness experiences enveloped by nature - including yoga & meditation
- The Infinity pool with views of the plains is a focal area of the lodge
- Heated plunge pools
- Fully equipped fitness centre
- Media room
- Singita Boutique & Gallery at the nearby Singita Sasakwa Lodge
- Children of all ages are welcome and babysitting services are available
- Tailormade activities to suit each group or family (children's participation in game activities is at the discretion of guides)
- Please note that there are no Kosher or Halaal facilities at Singita Kilima







## Weather and temperature

### BEST TIME TO GO ON SAFARI

East Africa is equatorial, so the climate is fairly constant, making Singita Grumeti a perfect year-round destination. The Green Season, from November to May, offers long, warm days with short downpours of rain, which transforms the landscape into lush green grasslands teeming with diverse wildlife. June to October is traditionally the migration season, when the days are warm, sunny and dry.

### AVERAGE SEASONAL TEMPERATURE RANGES

#### SPRING

(Sept - Nov)

Low 20 °C / 68 °F

High 30 °C / 86 °F

#### SUMMER

(Dec - Feb)

Low 23 °C / 73 °F

High 31 °C / 88 °F

#### AUTUMN

(March - May)

Low 22 °C / 72 °F

High 31°C / 88 °F

#### WINTER

(June - Aug)

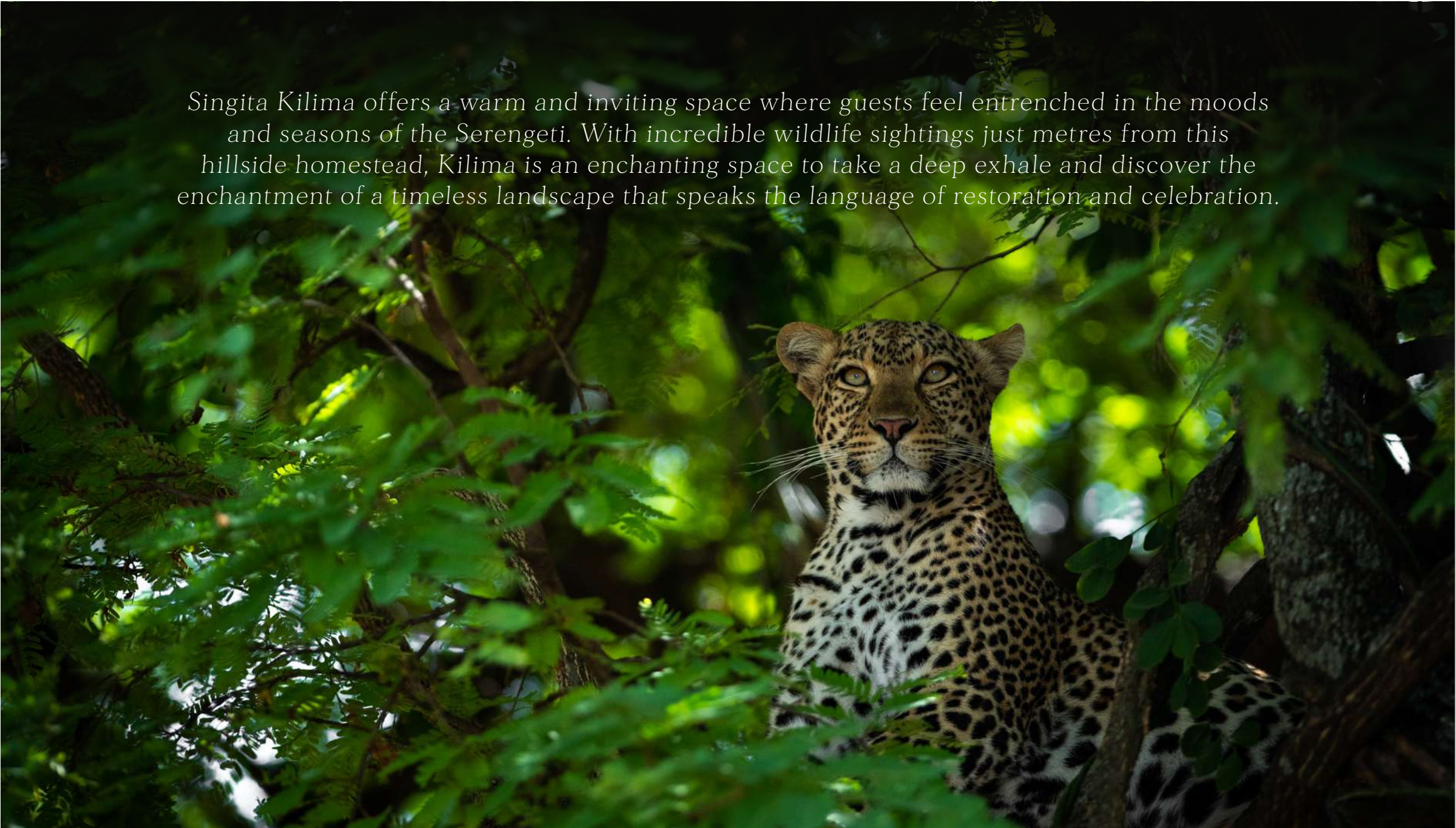
Low 18 °C / 64 °F

High 29 °C / 84 °F

The above temperatures are monthly averages. The actual daily temperatures may differ from these.



*Singita Kilima offers a warm and inviting space where guests feel entrenched in the moods and seasons of the Serengeti. With incredible wildlife sightings just metres from this hillside homestead, Kilima is an enchanting space to take a deep exhale and discover the enchantment of a timeless landscape that speaks the language of restoration and celebration.*







Tel +27 21 683 3424

enquiries@singita.com

www.singita.com

# Lodges and Camps across 4 countries in Africa

## SOUTH AFRICA

**Kruger National Park:** Singita Lebombo and Sweni Lodges

**Sabi Sand:** Singita Castleton, Boulders and Ebony Lodges

## TANZANIA

**Grumeti:** Singita Milele, Kilima, Sasakwa Lodge, Sabora Tented Camp, Faru Faru Lodge, Serengeti House and Explore

**Lamai:** Singita Mara River Tented Camp

## ZIMBABWE

**Malilangwe Wildlife Reserve:**

Singita Pamushana Lodge and Malilangwe House

## RWANDA

**Volcanoes National Park:**

Singita Kwitonda Lodge and Kataza House