

Singita

PACKING GUIDELINES | SAFARI

FOR SAFARI, WE RECOMMEND LAYERING YOUR CLOTHING. Game drives take place early morning and evenings and it is quite cold before the sun rises and after it sets. The day-time temperatures can be warm and sunny and it can get quite hot. Light, natural fabrics like cotton and linen are recommended for during the day (shorts, t-shirts, summer dresses) and in the evenings, layer up with long trousers, long sleeve vests and a warm jacket. Formal wear is not required at any of our lodges - you are free to come straight from game drive into dinner.

We recommend neutral tones and light colours. Certain colours, like black and navy blue attract Tsetse flies in East Africa and dark colours attract the heat. Neutral colours are advised. Avoid white/bright colours for bush walks. Laundry is done complimentary at Singita lodges, so that is one less thing to worry about as well and will help with packing lightly.

*Our airline partners require that you travel with soft-sided luggage (max 15kg/33lb per person).

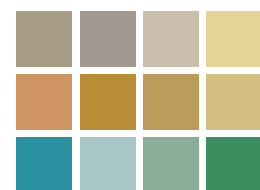


PACKING LIST

- Long trousers or denim jeans
- Long sleeve vests/t-shirts
- Shorts, t-shirts, summer dresses
- A warm jacket, fleece or windbreaker
- Woollen hat/beanie, gloves and scarf
- A good pair of walking shoes
- Socks to wear with walking shoes - especially if you plan on going on Bush Walks
- Sandals or flip-flops for during the day at the lodge and some closed shoes or sneakers for evenings
- Wide-brimmed sun hat, sunglasses and a good sunscreen
- Swimming costume/bathing suit
- Camera, video camera binoculars, spare memory cards and charging equipment. We do provide spare sets of binoculars on our game vehicles and at the lodges if you don't have your own.



SINGITA INSPIRED COLOUR PALETTE



VISIT [SINGITASTORES.COM](https://www.singitastores.com)