

## Gingival Replicator

PermaFlo Pink composite offers an attractive solution for cases in which gingival grafting isn't an option.

- Masks prevalent gingival recession in Class V restorations
- Improves patient comfort by covering exposed root structure

Fig. 1



Following tooth preparation and application of dentin bonding agent (we recommend Peak Universal Bond adhesive), restoration is built incrementally with PermaFlo Pink material.

Fig. 2



Resultant restoration can mask white root surfaces in cases of recession when gingival grafting isn't an option.

### Instructions

1. Remove Luer Lock cap and attach a disposable Micro 20 ga tip securely onto syringe.
2. Isolate preparation with Ultrapak™ cord and/or DermaDam™ dental dam to control sulcular fluid.
3. Etch 15 seconds.
4. Apply dentin bonding agent (we recommend Peak™ Universal Bond adhesive). Air thin, then light cure 10 seconds with VALO™ curing light.
5. Apply first layer of PermaFlo Pink material 0.5–1 mm and light cure. Follow with 2 mm increments as needed. Light cure each resin layer 10 seconds. See Fig.1.
6. Shape with appropriate finishing burs. Finish with strips, polishing cups, and wheels or disks as appropriate. We recommend the Jiffy™ polishing system for shine, ending with Jiffy™ HiShine™ polisher. See Fig. 2.



**963 - PermaFlo Pink Mini Kit**  
2 x 1.2 ml syringes  
4 x Micro 20 ga tips

# Impressive Flowability, High Strength



PermaFlo™ flowable composite is formulated to offer the optimum level of thixotropy. Cover the wide range of anterior and posterior restorations in Classes I–V with total confidence.

PermaFlo composite is exceptional in tunnel preps and restoring tooth structure prior to endodontic therapy. It's also great for pediatric restorations, masking metal on a fractured PFM, and as the super-adaptive layer beneath composites.

### Add PermaFlo™ Pink Composite to a Class V

An excellent alternative to gingival grafting, PermaFlo Pink composite can also be used as a masking agent in Class V restorations where root structure is exposed.

Improve patient confidence and your own with an extra touch of esthetic skill.



SCAN TO VIEW PRICING

# PermaFlo™ Flowable Composite

Do you want both strength and flow?

A good flowable composite should offer two things: impressive flowability and high strength. Unfortunately, most composites only offer one or the other, forcing you to compromise.

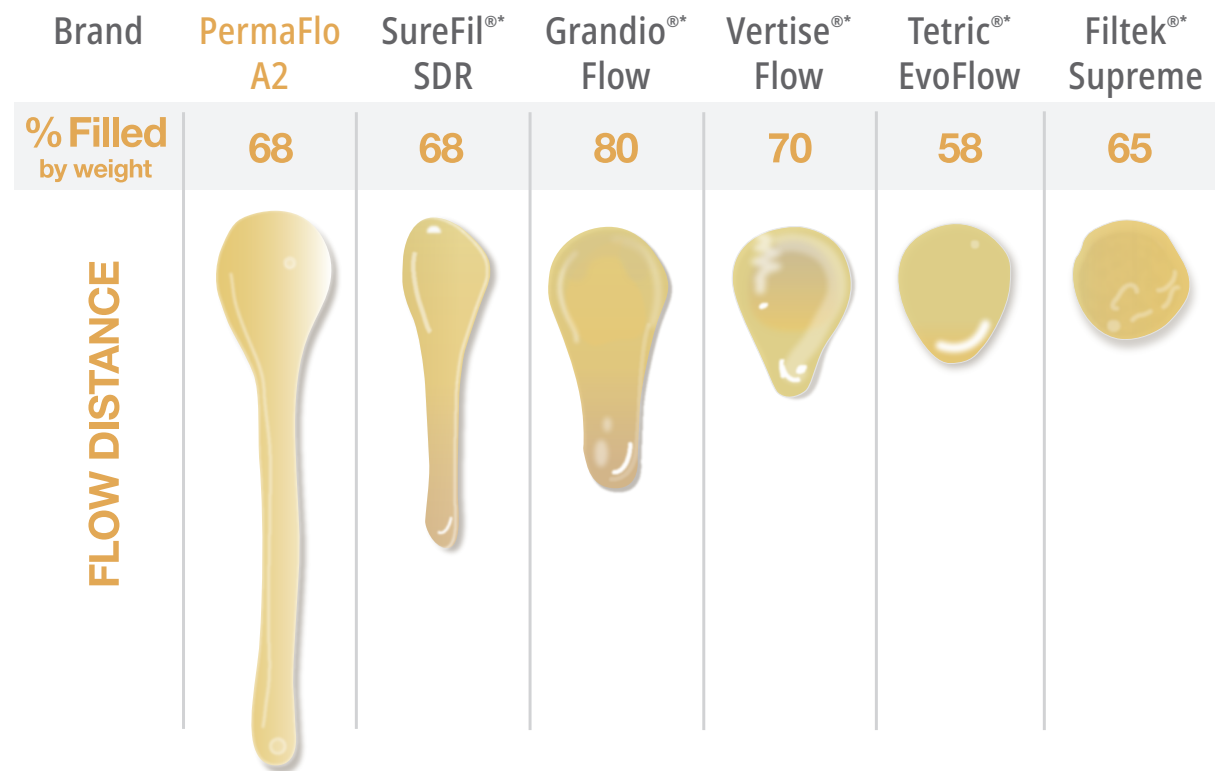
With PermaFlo flowable composite's high fill AND high flow, you don't have to compromise. It is formulated to offer the optimum level of thixotropy for anterior and posterior restorations. It is exceptional in tunnel preps and restoring tooth structure prior to endodontic therapy. It is also great for pediatric restorations, masking metal on a fractured PFM, and as the super-adaptive initial layer beneath composites.

## Features and Benefits

- High fill and high flow are ideal for the super-adaptive initial layer
- 68% filled for high compressive strength<sup>2</sup>
- Radiopaque for clarity in radiograph diagnosis<sup>2</sup>
- Eight tooth-colored shade choices for beautiful esthetics
- Average particle size of 0.7 µm for superior strength and polishability<sup>1</sup>

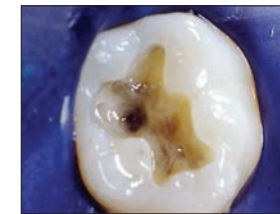


# HIGH FILL! HIGH FLOW!

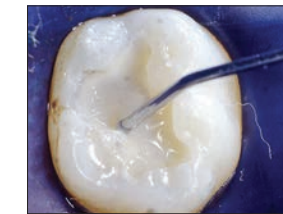


A test of light-cured flowable composites shows that even with one of the highest fill rate in its class, PermaFlo flowable composite flows better than any other composite on the market.<sup>1</sup>

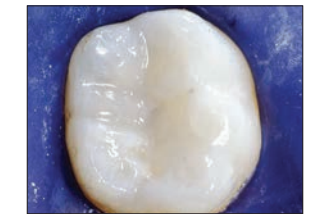
## Super-Adaptive Initial Layer



1. Amalgam-tattooed hard dentin is easily concealed using PermaFlo flowable composite as the super-adaptive initial layer.



2. To avoid amalgam show-through, use one or two layers of PermaFlo composite's Dentin Opaquer shade, followed by a layer of composite—we recommend Vit-I-escence™ esthetic restorative material.



3. With PermaFlo flowable composite as the initial layer, you get better long-term results with total masking of dark colors and no voids.

## Micro Restorative



1. PermaFlo flowable composite's high flow makes it easy to deliver through the Micro 20 ga tip.

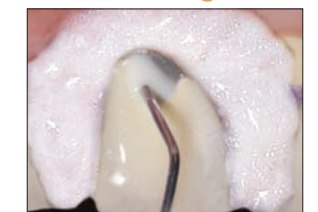


2. Note the unsurpassed adaptation as PermaFlo flowable composite fills from the preparation floor up.



3. Finished with a composite like Vit-I-escence restorative material.

## Metal Masking



PermaFlo composite's Dentin Opaquer shade is great for masking metal with just a thin layer.

**"I use it, I teach it, I recommend it because it is tough as nails, is very radiopaque, and has a high modulus—comparable to many restorative composites."**

—Dr. John Kanca

## PermaFlo Syringe Kits

Shade	Kit	Shade	Kit
A1	947	A4	954
A2	948	B1	956
A3	949	Translucent	612
A3.5	952	Dentin Opaquer	1005

2 x 1.2 ml syringes  
4 x Micro 20 ga tips

1. Data on file. 2. Data on file.

\*Not a registered trademark of Ultradent Products, Inc.