







# HIGH FILL!

# HIGH FLOW!

Brand	PermaFlo A2	SureFil®* SDR	Grandio®* Flow	Vertise®* Flow	Tetric®* EvoFlow	Filtek®* Supreme
<b>% Filled by weight</b>	<b>68</b>	<b>68</b>	<b>80</b>	<b>70</b>	<b>58</b>	<b>65</b>
<b>FLOW DISTANCE</b>						

A test of light-cured flowable composites shows that even with one of the highest fill rate in its class, PermaFlo flowable composite flows better than any other composite on the market.\*\*

\*\*Data on file.

\*Not a registered trademark of Ultradent Products, Inc.

### Do you want both strength and flow?

A good flowable composite should offer two things: impressive flowability and high strength. Unfortunately, most composites only offer one or the other, forcing you to compromise.

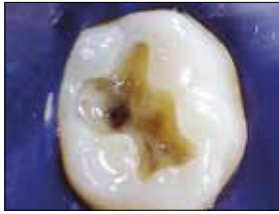
### With PermaFlo flowable composite's high fill AND high flow, you don't have to compromise.

It is formulated to offer the optimum level of thixotropy for anterior and posterior restorations. It is exceptional in tunnel preps and restoring tooth structure prior to endodontic therapy. It is also great for pediatric restorations, masking metal on a fractured PFM, and as the super-adaptive initial layer beneath composites.



# PermaFlo™

## Super-Adaptive Initial Layer



1. Amalgam-tattooed hard dentin is easily concealed using PermaFlo flowable composite as the super-adaptive initial layer.



2. To avoid amalgam show-through, use one or two layers of PermaFlo's Dentin Opaquer shade, followed by a layer of composite—we recommend Vit-I-escence™ esthetic restorative material or Amelogen™ Plus composite.



3. With PermaFlo flowable composite as the initial layer, you get better long-term results with total masking of dark colors and no voids.

## Micro Restorative



1. PermaFlo flowable composite's high flow makes it easy to deliver through the Micro 20 ga tip.



2. Note the unsurpassed adaptation as PermaFlo flowable composite fills from the preparation floor up.



3. Finished with a composite like Vit-I-escence restorative material or Amelogen Plus composite, PermaFlo flowable composite totally masks dark colors.

## Metal Masking



PermaFlo's Opaquer shade is great for masking metal with just a thin layer.

## Features and Benefits

- High fill and high flow are ideal for the super-adaptive initial layer
- Radiopaque for clarity in radiograph diagnosis
- Eight tooth-colored shade choices for beautiful esthetics
- Average particle size of 0.7 µm for superior strength and polishability
- 68% filled for high compressive strength
- Four-star rating with Reality

"I use it, I teach it, I recommend it because it is tough as nails, is very radiopaque, and has a high modulus—comparable to many restorative composites." – Dr. John Kanca



## PermaFlo Syringe Kits

Shade	Kit	Shade	Kit
A1	947	A4	954
A2	948	B1	956
A3	949	Translucent	612
A3.5	952	Dentin Opaquer	1005

2 x 1.2 ml syringes  
4 x Micro 20 ga tips

## 1273 - PermaFlo Universal Kit

- 1 x 1.2 ml syringe of each shade: A1, A2, A3, A3.5, A4, B1, Dentin Opaquer, and Translucent
- 1 x 1.2 ml Peak Universal Bond syringe
- 1 x 1.2 ml Ultra-Etch syringe
- 1 x Half-size syringe organizer
- 1 x Shade guide
- 6 x Inspiral Brush tips
- 20 x Black Mini tips
- 20 x Micro 20 ga tips