



DR. BRETT RICHINS

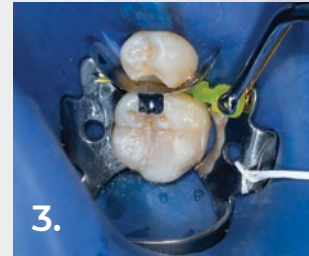
After earning his bachelor's degree in biomedical engineering from the University of Utah in 2008, Dr. Richins received his doctorate from the University of Pittsburgh School of Dental Medicine in 2012. He is a member of the Academy of General Dentistry, the American Dental Association, and the Utah Dental Association. He continues to pursue his education and frequently attends advanced courses that cover topics such as Endodontics, Implantology, Cosmetic Dentistry, Oral Pathology, TMJ, Sleep Apnea, and much more. He has also done humanitarian dentistry in underserved areas of Jamaica, Vanuatu, and Appalachia.



1. DO preparation on tooth #29 (mandibular right second premolar) with caries removed.



2. 4.5 mm Halo™ band placed using Halo tweezers to hold the occlusal tab.



3. Small Halo wedge placed from the buccal using Halo tweezers.



4. Halo universal ring in place. Ready to begin restoration.



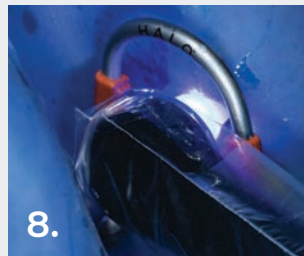
5. Check adaptation of band. Burnishing is typically not required but can be done if needed in challenging cases to ensure an adequate proximal contact.



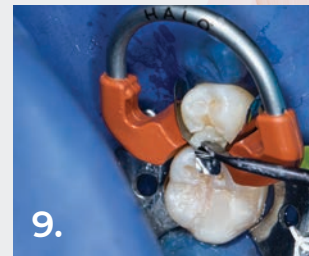
6. Ultra-Etch™ etchant applied for 15 seconds on dentin and cut enamel.



7. Peak™ Universal Bond adhesive scrubbed into dentin and painted onto enamel for 10 seconds using Inspirial™ Brush tip.



8. Thinned/dried for 10 seconds using ¼ to ½ air pressure. Preparation appeared shiny, and air thinning no longer produced visible movement of the resin. Cured for 10 seconds using the VALO™ X curing light.



9. Placed Transcend™ composite Universal Body shade in layers 2 mm or less.



10. Minimal finishing required after immediate removal of Halo matrix system.



11. Finished with the Jiffy™ Natural polishing line.



12. Completed restoration with anatomical contact and sole use of Transcend composite's Universal Body shade.

