

Back to bright

Opalescence™ Endo Whitening

- 35% hydrogen peroxide
- Specifically formulated to whiten endodontically treated, discolored, non-vital teeth
- Designed for the “walking bleach” technique
- Convenient, premixed syringe delivery



Non-Vital “Walking Bleach”



Before



After



Before



After

Courtesy of Dr. Rich Tuttle.

Courtesy of Dr. Jaleena Jessop.

Opalescence™ Endo Whitening

MUST BE REFRIGERATED

1270 - Opalescence Endo Syringe Kit
2 x 1.2 ml Opalescence Endo syringes
20 x Black Mini tips



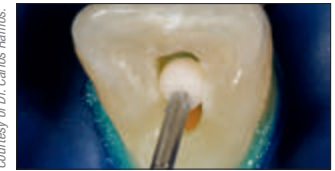
MUST BE REFRIGERATED

1323 - Opalescence Endo Syringe 2pk
1.2 ml syringes

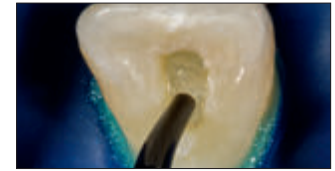


Procedure

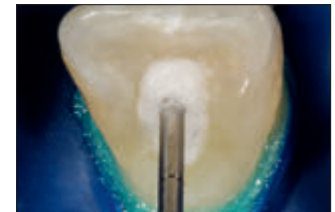
Courtesy of Dr. Carlos Ramos.



1. Completely remove all the restorative and root sealing material from the coronal pulp chamber and 2–3 mm below healthy gingiva. Place a 2 mm thick conventional glass ionomer or a resin modified glass ionomer to seal the endodontically treated canal. Verify set of material before proceeding.



2. Apply a layer of Opalescence Endo whitening gel to the chamber.



3. Insert a cotton pellet into the chamber.



4. Place mixed UltraTemp™ Regular filling material directly to site.



5. Wipe away excess with a wet cotton ball or gauze before it sets.



Finished. Repeat every 1–5 days until desired results are achieved.