

**PEAK**<sup>™</sup>  
UNIVERSAL ADHESIVE SYSTEM

**SE Primer**



# FRESH CHEMISTRY

FOR EVERY PROCEDURE



Peak SE Primer is mixed and delivered in the unique JetMix<sup>™</sup> syringe. JetMix technology separates precise quantities of strong acid (pH 1.2) and optimized priming resin to prevent the hydrolytic breakdown and degradation that occurs with other self-etch chemistries. Components are kept separate until the clinician activates them.

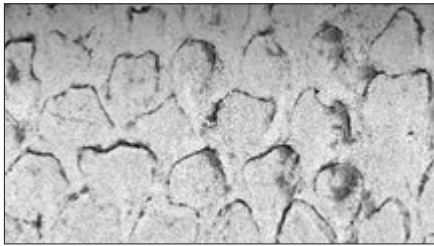
# Peak™ SE Primer

Peak SE Primer, when used with Peak™ Universal Bond adhesive, provides top-rated bond strengths by an independent non-profit dental education and product testing institute.<sup>1</sup> It is ideal for all light-accessible bonding procedures, and can also be used for immediate dentin sealing prior to impressions and temporization in order to decrease post-op and cementation sensitivity.

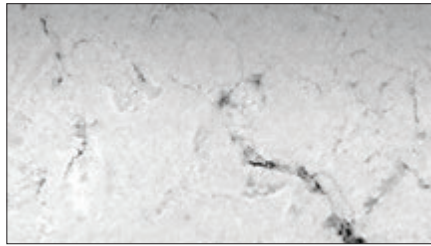
- Delivers fresh, stable chemistry
- Easy, one-coat technique
- Precise, convenient application
- Eliminates the need for mixing wells or brushes
- Provides the highest bond strengths to dentin and enamel<sup>2</sup>

## HIGHEST BOND STRENGTHS TO DENTIN AND ENAMEL!<sup>2</sup>

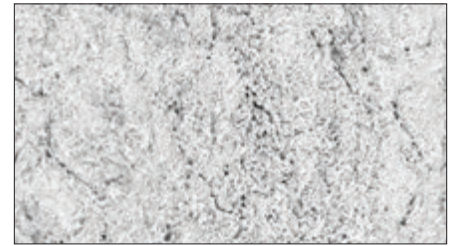
COMPARISON OF 3 SELF-ETCH ADHESIVE SYSTEMS, UNIVERSITY OF IOWA COLLEGE OF DENTISTRY<sup>3</sup>



SEM of cut enamel treated with Peak SE Primer. Note the keyhole appearance of the etched enamel rods.



SEM of cut enamel treated with Clearfil® SE Bond.



SEM of cut enamel treated with Adper® Prompt L-Pop.

## FOR INDIRECT BONDING



1. Brush Peak SE Primer onto preparation for 20 seconds.



2. Thin/dry for 3 seconds.



3. Apply a puddle coat of Peak Universal Bond adhesive and scrub for 10 seconds into dentin.



4. Thin aggressively with suction for 10 seconds. Then light cure for 10 seconds on Standard Power mode with VALO™ curing light.

REFRIGERATE



**5135 - Peak SE Primer Syringe 4pk**  
1.0 ml syringes

\$80.55 ea | \$76.52 ea 3/more | \$72.50 ea 5/more

REFRIGERATE



**4554 - Peak Universal Bond Self-Etch Syringe Intro Kit**

1 x 1.2 ml Peak Universal Bond syringe  
1 x 1.0 ml Peak SE Primer syringe  
20 x Black Mini Brush tips  
20 x Inspiral Brush tips

REFRIGERATE



**4541 - Peak Universal Bond Self-Etch Bottle Kit**

1 x 4 ml Peak Universal Bond bottle  
4 x 1.0 ml Peak SE Primer syringes  
40 x Black Mini Brush tips  
50 x Mixing Wells  
50 x Micro Applicator brushes

1. Clinicians Report, Volume 5, Issue 8, August 2012. 2. Data on file. 3. Vargas M. Ultramorphological evaluation of the resin-dentin-enamel interface produced by three proprietary self-etching adhesive systems. 2007. Data on file. \*Trademark of a company other than Ultradent.