

where
STRONG
bonds
begin



opaletch[™]
35% phosphoric acid

Achieve the ideal bonding surface for complete resin penetration

35% PHOSPHORIC ACID

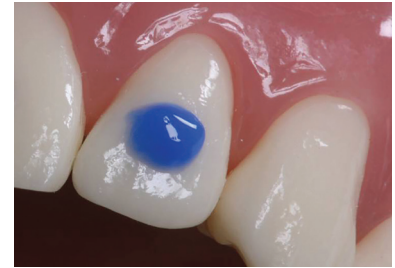
The unique physical and chemical properties of Opal Etch etchant create the optimal viscosity to ensure it won't migrate or prematurely dry. Its syringe delivery with the Blue Micro[™] tip facilitates precise placement and complete control, and its self-limiting¹ formulation creates the ideal surface for adhesive penetration.

Strong bonds begin with Opal Etch etchant.

- Optimal viscosity prevents migration or premature drying
- Proprietary etch solution rinses off enamel quickly and easily
- Brilliant blue color assures safe, accurate placement and complete removal
- Contains a surfactant for complete, easy rinsing
- Unique self-limiting properties prevent over-etching¹



500-012 - Opal Etch Syringe Kit
4 x 1.2 ml Opal Etch syringes
20 x Blue Micro tips



Brilliant blue color makes Opal Etch etchant easy to see, while its optimal viscosity ensures no migration.



Deliver Opal Etch etchant with the Blue Micro[™] tip for precise placement.



500-013 - Opal Etch Syringe 20pk
500-091 - Opal Etch Syringe 50pk
1.2 ml syringe



500-090 - Opal Etch IndiSpense[™] Syringe 1pk
30 ml syringe



123 - Inspiral[™] Brush Tips 100pk



124 - 1.2 ml Empty Delivery Syringe 20pk
1.2 ml syringe



127 - Blue Micro Tips 100pk



SCAN
TO VIEW
PRICING



© 2023 Ultradent Products, Inc. All rights reserved.
85127AR12 103122

1. Perdigão J, Lopes M. The effect of etching time on dentin demineralization. *Quintessence Int.* 2001;32(1):19–26.

800.552.5512 | ULTRADENT.COM

