



5585 - FORMA S Syringe Intro Kit

1 x 4 g syringe of each shade:
A1B, A3B, A3.5B
2 x 4 g syringe of A2B



5828 - FORMA S Capsule Intro Kit

10 x 0.2 g capsule of each shade:
A1B, A3B, A3.5B
20 x 0.2 g capsule of A2B



FORMA S Syringe 1pk
4 g syringe

Dentin	1pk	Body	1pk
A1D	5587	A1B	5586
A2D	5592	A2B	5589
A3D	5599	A3B	5598
B1D	6029	A3.5B	5596
C2D	6038	B1B	5642
WD	5653	BL1	5657
Enamel	1pk	BL2	5658
A1E	5588	Effect	1pk
A2E	5594	Translucent	5651
A3E	5639	Opaquer	5659
WE	5654		
XWE	5656		



FORMA S Capsule 10pk
10 x 0.2 g capsule

Dentin	10pk	Body	10pk
A1D	5661	A1B	5660
A2D	5668	A2B	5667
A3D	5673	A3B	5672
B1D	6027	A3.5B	5670
C2D	6028	B1B	5677
WD	5688	BL1	5692
Enamel	10pk	BL2	5693
A1E	5666	Effect	10pk
A2E	5669	Translucent	5686
A3E	5674	Opaquer	5694
WE	5689		
XWE	5691		

RELIABLE SHADE MATCHING
LASTING CONFIDENCE



Restoration with only one body shade (A2B).
Courtesy of Dr. Jaleena Fischer-Jessop.

Restoration with shades BL1, A2E, and A2B.
Courtesy of Dr. Jaleena Fischer-Jessop.

FORMATM S zirconia nano-hybrid composite combines versatility with durability to deliver esthetics, strength, and effortless handling for long-lasting results. Its seamless opacity transitions from Dentin to Body to Enamel enable both highly esthetic layered restorations and simplified single-shade restorations.



SCAN TO VIEW PRICING

FORMA S composite delivers elevated esthetics with results that last.

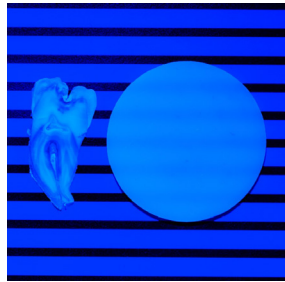
FORMA S composite boasts a proprietary zirconia nano-hybrid formulation, ensuring superb working consistency and exceptionally esthetic, durable restorations.

Zirconia particles yield a stunning high-gloss finish for highly esthetic restorations. They are known for providing ideal translucency and color stability in dental materials, enabling better shade matching that mimics natural dentition. As an extremely hard ceramic material, zirconia particles increase the wear resistance and extend the life of composite restorations. Beyond impressive mechanical and optical properties, FORMA S composite features a complete and intuitive shade system: Body, Dentin, Enamel, and Effect shades, making it the ideal choice for both anterior and posterior dental restorations.



The QuadraSpense™ tip is Ultradent's innovative design for dispensing precise increments of composite material. If desired, the tip can be easily removed.

Natural Fluorescence



- Ideal balance between translucency and opacity
- Fluoresces similar to natural teeth

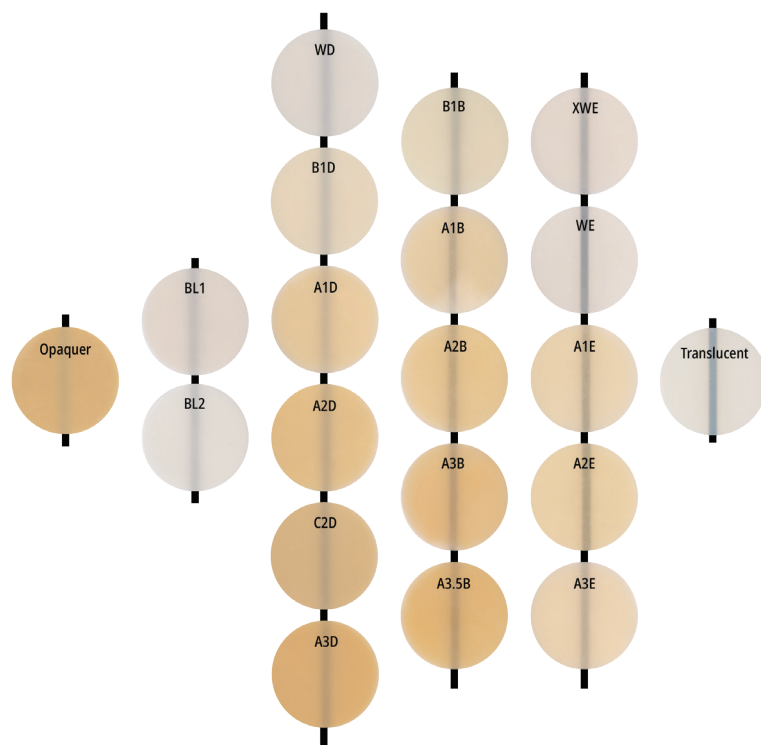
High Gloss



- Simple to polish with Ultradent's Jiffy™ composite polishing system
- Beautiful esthetics

Intuitive Shade System

The various opacities of FORMA S composite are engineered with an ideal balance of translucency and opacity, allowing you to achieve natural-looking results with a single Body shade in most cases. For cases requiring greater esthetic nuance, the consistent relationship in shade opacity and translucency between the Dentin, Body, Enamel, and Effect shades of FORMA S composite ensures seamless multi-shade layering. This harmony enables you to confidently create lifelike, highly esthetic restorations that mimics the natural dentition.



Sculptable Consistency



- Smooth and easy to sculpt
- Does not stick to instruments
- Won't slump
- Ample working time

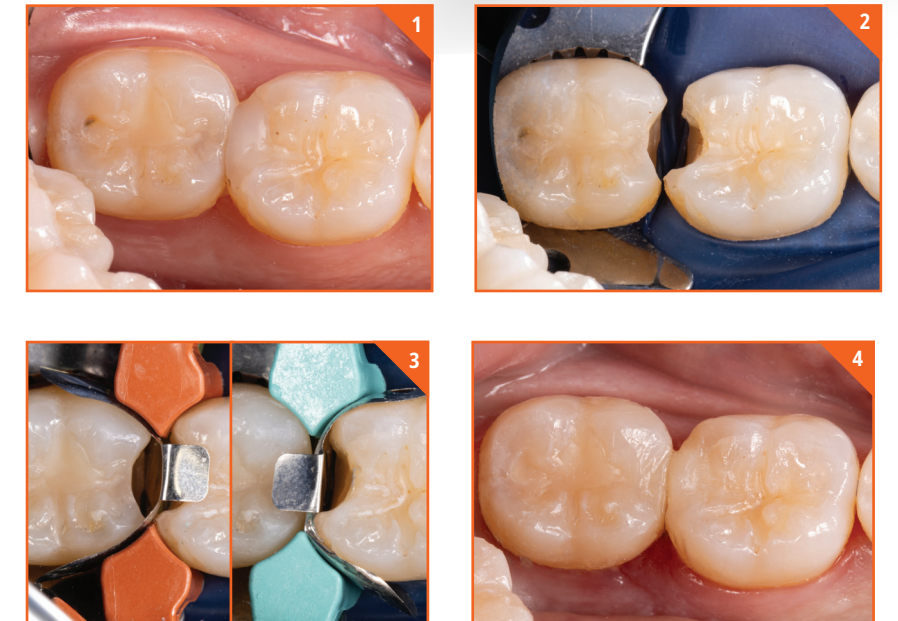


Posterior Restoration:

Dr. Jaleena Fischer-Jessop

1. Patient presented with recurrent decay underlying existing DO on #30 and initial decay on mesial of #31.
2. Removed initial decay using Sable™ Seek™ caries indicator. Removed existing DO composite filling and underlying decay on #30 and removed initial decay on #31.
3. Halo™ universal ring and small wedge used to restore #31. Halo™ short ring and extra small wedge used to restore #30. Total etch with Ultra-Etch™ etchant, Consepsis™ 2% chlorhexidine solution, and Peak™ Universal Bond adhesive.
4. Shaped with Jiffy™ Spin and polished using Jiffy™ Natural Yellow and White wheels.

FORMA S composite shade used:



Anterior Restoration:

Dr. Jaleena Fischer-Jessop

1. Patient presented with a failing restoration on tooth #9. The patient had originally broken the tooth as a 13-year-old and needed to have it fixed multiple times over the years.
2. After removing the old restoration, the tooth was prepped with Ultra-Etch etchant and Consepsis antibacterial solution before applying Peak Universal Bond adhesive. The restoration was completed using FORMA S composite shades A2B, A2E, and BL1, with Ultradent™ Composite Wetting Resin used to facilitate adaption. The composite was cured with the VALO™ X curing light.
3. Finished and polished with Jiffy™ Natural Composite polishers to give the restoration a natural finish.

FORMA S composite shades used:

