

The strength is in the preparation.

Ultradent™ Porcelain Etch, a buffered 9% hydrofluoric acid, produces an optimal surface texture on silica-based ceramics after a 90-second application. Once rinsed and followed by a 60-second application of Ultradent™ Silane coupling agent, the highest porcelain-to-resin bond strengths can be achieved.¹

- Easy to control and place
- Will not stain composite or resin cement
- Yields highest porcelain-to-resin bond strengths¹

Porcelain Etch and Silane

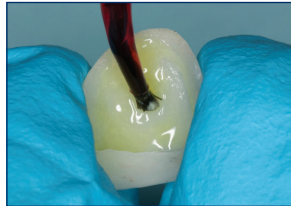
Ultradent Porcelain Etch is a buffered, 9% hydrofluoric acid and is ideal for intraoral and extraoral porcelain etching. It offers high visibility and is viscous enough to stay where it's placed.



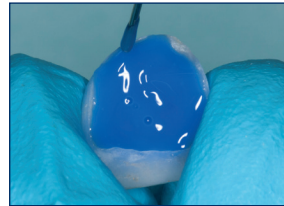
For the best bond strengths, follow porcelain etching with an application of Ultradent Silane, a single-component coupling agent.

- Syringe/tip delivery eases placement
- 90-second etch, 60-second silane
- High porcelain-to-resin bond strengths¹
- Predictable, stain-free chemistries
- Stable formulation with long shelf life

For best results, use Porcelain Etch etchant with the Inspiral™ Brush tip and Silane coupling agent with the Black Mini™ Brush tip.



Etch ceramic bonding surface with Porcelain Etch etchant for 90 seconds, rinse, and dry.



CLINICAL TIP: Apply Ultra-Etch™ etchant for five seconds to remove porcelain salts and debris formed by hydrofluoric acid etching.



Apply a puddle coat of Silane coupling agent to the inside surface of the prosthesis for 60 seconds, dry, and set aside. Do not rinse. Prosthesis is now ready for luting/cementing.



405 - Porcelain Etch Syringe Kit

- 2 x 1.2 ml Porcelain Etch syringes
- 2 x 1.2 ml Silane syringes
- 20 x Black Mini Brush tips
- 20 x Inspiral Brush tips



406 - Porcelain Etch Syringe 2pk

- 1.2 ml syringes

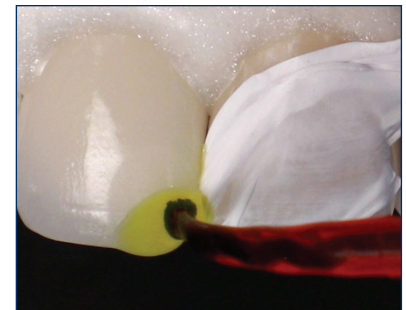


410 - Silane Syringe 2pk

- 1.2 ml syringes

1108 - Ultradent Porcelain Repair Syringe Kit

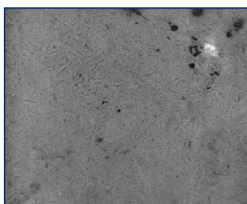
- 1 x 1.2 ml PermaFlo Dentin Opaquer syringe
- 1 x 1.2 ml Ultra-Etch syringe
- 1 x 1.2 ml OpalDam syringe
- 1 x 1.2 ml Peak Universal Bond syringe
- 1 x 1.2 ml Porcelain Etch syringe
- 1 x 1.2 ml Ultradent Silane syringe
- 20 x Black Mini Brush tips
- 20 x Blue Micro tips
- 20 x Micro 20 ga tips
- 20 x Inspiral Brush tips



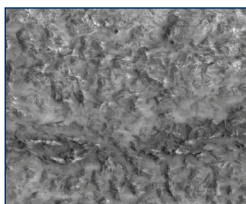
The repair of a fractured porcelain veneer begins with Porcelain Etch acid.

(Photo courtesy of Dr. Gary Findley)

Ultradent Porcelain Etch etchant and Silane agent may also be used on lithium disilicate (IPS e.max[®]) restorations²



Lithium disilicate surface before being etched²



After 90-second application of Porcelain Etch etchant

Product	Instructed Etching Time	Coupling Agent	Shear Bond Strength ³
Ultradent Porcelain Etch (9% hydrofluoric acid)	90 seconds	Silane 60 Seconds	44.30 MPa
IPS Ceramic Etching Gel (5% hydrofluoric acid)	20 seconds	Monobond [®] * Plus 60 seconds	28.63 MPa



SCAN TO VIEW PRICING

¹ Pameijer CH, Louw NP, Fischer D. Repairing fractured porcelain: how surface preparation affects shear force resistance. *J Amer Dent Assoc.* 1996; 127(2):203-9. ² Data on File 3. ³ Data on File. *Registered trademark of a company other than Ultradent