

Restore confidence in one appointment

Opalustre™ Chemical and Mechanical Abrasion

Opalustre slurry is a 6.6% hydrochloric acid slurry that contains silicon carbide microparticles. This helps remove unsightly enamel decalcification defects that are less than 0.2 mm in depth. Opalustre slurry is effective in treating mild fluorosis and stains in the superficial layer of the enamel.¹

- Permanently removes superficial enamel imperfections
- Provides minimally invasive treatment for mild fluorosis
- Comes in a direct, mess-free delivery
- Active treatment keeps clinician in direct control





554 - Opalustre Syringe 4pk Kit
 4 x 1.2 ml Opalustre syringes
 10 x Each OpalCups bristle and finishing
 20 x White Mac tips



554 - Opalustre Syringe 2pk Kit
 2 x 1.2 ml Opalustre syringes
 5 x Each OpalCups bristle and finishing
 10 x White Mac tips



555 - Opalustre Syringe 4pk
 1.2 ml syringes



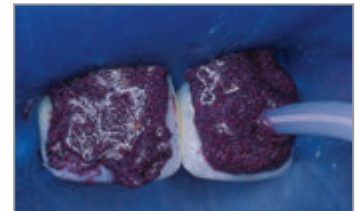
5800 - OpalCups Bristle 20pk



5799 - OpalCups Finishing 20pk



Before.



After rubber dam placement, apply Opalustre slurry to affected area using the syringe.



Use OpalCups™ bristle cup to compress Opalustre slurry on tooth surface using medium to heavy pressure. Suction the paste from the teeth then rinse, evaluate, and repeat as necessary. Finish treatment by polishing with OpalCups™ finishing cup.



After enamel microabrasion and 21 days of whitening with Opalescence™ PF whitening.



SCAN
TO VIEW
PRICING

1. Celik EU, Yazkan B, Yildiz G, Tunac AT. Clinical performance of a combined approach for the esthetic management of fluorosed teeth: Three-year results. *Nigerian Journal of Clinical Practice*. 2016. 2. www.realityesthetics.com.