

# Restore confidence in one appointment

## Opalustre™ Chemical and Mechanical Abrasion

Opalustre slurry is a 6.6% hydrochloric acid slurry that contains silicon carbide microparticles. This helps remove unsightly enamel decalcification defects that are less than 0.2 mm in depth. It is ideal for superficial white and brown demineralization due to enamel mottling from fluorosis.<sup>1</sup>

- Permanently removes superficial enamel imperfections
- Provides minimally invasive treatment for mild fluorosis
- Comes in a direct, mess-free delivery
- Active treatment keeps clinician in direct control





**554 - Opalustre Syringe 4pk Kit**  
 4 x 1.2 ml Opalustre syringes  
 10 x Each OpalCups bristle and finishing  
 20 x White Mac tips



**554 - Opalustre Syringe 2pk Kit**  
 2 x 1.2 ml Opalustre syringes  
 5 x Each OpalCups bristle and finishing  
 10 x White Mac tips



**555 - Opalustre Syringe 4pk**  
 1.2 ml syringes



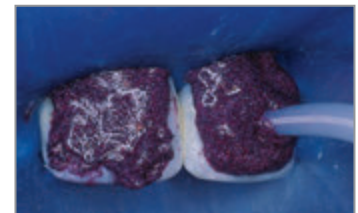
**5800 - OpalCups Bristle 20pk**



**5799 - OpalCups Finishing 20pk**



Before.



After rubber dam placement, apply Opalustre slurry to affected area using the syringe.



Use OpalCups™ bristle cup to compress Opalustre slurry on tooth surface using medium to heavy pressure. Suction the paste from the teeth then rinse, evaluate, and repeat as necessary. Finish treatment by polishing with OpalCups™ finishing cup.



After enamel microabrasion and 21 days of whitening with Opalescence™ PF whitening.

1. Croll TP, Segura A, Donly KJ. Enamel microabrasion: new considerations in 1993. *Pract Periodontics Aesthet Dent.* 1993;5(8):19-28; quiz 29. 2. [www.realityesthetics.com](http://www.realityesthetics.com).