

# ENDOEZE™ FIND™ Technique Guide

START



Plug the measuring cable into the device. The connector icon will appear.



Test the connection by touching the file clip to the lip clip. The connection icon will appear.

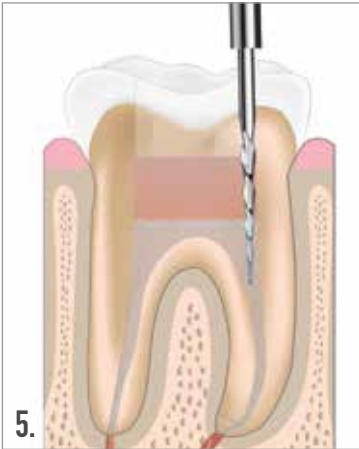


Ensure that the tooth is properly isolated.

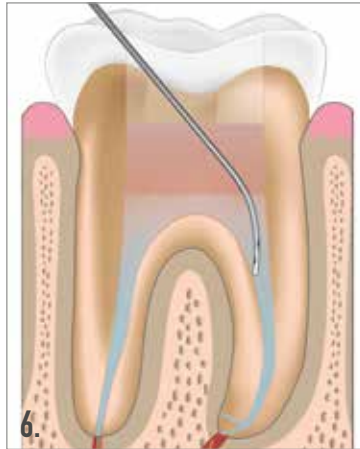


Place the lip clip onto the patient's lip.

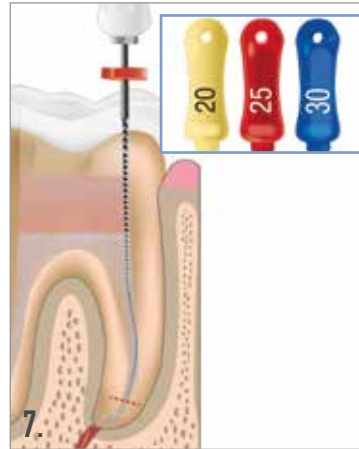
PROCEDURE



Before beginning the electronic measurement, prepare the cervical third and middle third of the canal.



Ensure that the canal is filled with irrigant up to the canal opening.



Insert a stainless steel K-File to the temporary working length. If the chosen file is loose inside the canal, exchange it for a file with a larger diameter.



Connect the file clip to the file. The file icon inside the tooth image will stop blinking.

800.552.5512 [ULTRADENT.COM](http://ULTRADENT.COM)

© 2017 Ultradent Products, Inc. All Rights Reserved. 1005914.1 121316



ULTRADENT  
PRODUCTS, INC.

# ENDO-EZE<sup>®</sup> FIND<sup>™</sup> Technique Guide

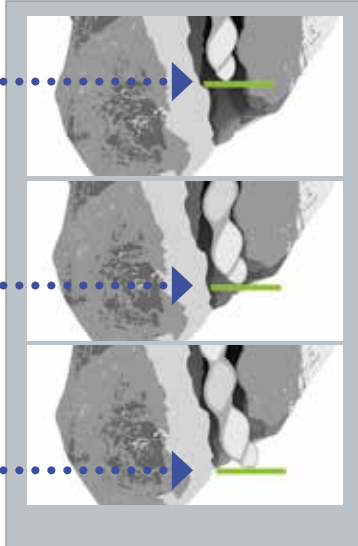
READINGS

0.5

0.0  
FORAMEN  
POSITION

OVER  
FILE OUT

9.



Move the file toward the foramen. As the file progresses, colored dots will appear inside the root canal image on the display to indicate the file's progress. Numerical readings will appear on the left side of the display.



When you have reached the foramen, adjust the rubber stop on the file to mark the length.



Determine the electronically obtained length with an endodontic ruler. To establish the working length, subtract .05–1.0 mm from the electronic length.

Scan for video  
or go to

[ultradent.com/endo-eze-find](http://ultradent.com/endo-eze-find)



800.552.5512 [ULTRADENT.COM](http://ULTRADENT.COM)

© 2017 Ultradent Products, Inc. All Rights Reserved. 1005914.1 121316



ULTRADENT  
PRODUCTS, INC.