



UltraTester™

Bond Strength Testing Machine

The UltraTester and MiniTester machines have been designed and created to capture peak compressive values applied to testing materials. The UltraTester machine is motorized and is able to apply and capture loads up to 750 lbs with adjustable speed control (0.1–25 mm/min) for addressing loading rate, and the MiniTester machine has been designed with portability in mind and is able to apply and capture loads up to 150 lbs.

UltraTester™

Bond Strength Testing Machine

THE ULTRATESTER MACHINE EFFECTIVELY TESTS AND COMPARES DENTAL AND ORTHODONTIC ADHESIVES.

Both machines utilize precision linear slides to apply the loading forces, which is of utmost importance for capturing accurate data on rigid materials. The manual loading lever on the MiniTester machine allows for very efficient test processing with a short learning curve, so when teaching large groups, one is better able to keep the group engaged in the subject matter without as much waiting and setup time. The MiniTester machine is ideal for shear bond testing but can be adapted for use with other tests. The UltraTester machine, with its higher load capacity, is able to perform many loading-type tests commonly used in dentistry, from the shear bond test which normally ranges up to about 70 lbs, as well as higher force demands, such as the compressive tests on the smaller specimens used in the UPI compression method, which commonly range up to about 550 lbs. While both machines have been evaluated against common high-priced equipment and are proven to generate similar results, each machine has unique benefits which can benefit your educational and research needs.

SKU	INDIVIDUAL PARTS	PRICE
1790	UltraTester Machine	\$5,450.00
5959	UltraTester Mini	\$1,635.00
5968	Linear Slide Shear Contact	\$703.00
5960	Test Base Clamp	\$77.00
34224	Bonding Clamp	\$21.50
34228	Bonding Mold Inserts (10pk)	\$13.00
1600	Grinding Mandrel and Plate	\$330.00
1599	16-Hole Mold	\$24.50



ULTRATESTER MACHINE



ULTRATESTER MINI

The UltraTester machine is intended for research purposes only.



LINEAR SLIDE SHEAR CONTACT



TEST BASE CLAMP



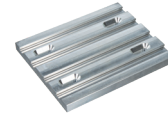
BONDING CLAMP



BONDING MOLD INSERT



GRINDING MANDREL



T-SLOT GRINDING PLATE



16-HOLE MOLD

1794 - Complete Bonding Kit

- 1 x UltraTester Testing Machine
- 10 x Bonding Clamps
- 1 x Test Base Clamp
- 1 x Linear Slide Shear Contact
- 10 x Bonding Mold Inserts
- 1 x Grinding Assembly Kit

\$6,625.00 ea

1594 - Grinding Assembly Kit

- 1 x Grinding Mandrel
- 1 x T-Slot Grinding Plate
- 5 x 16-Hole Molds
- 3 x Hex Wrenches (3/32", 1/8", 3/16")
- 4 x 8-32 5/8" Thread Flat Head Cap Screws

\$350.00 ea

1591 - Shear Bond Test Kit

- 5 x Bonding Clamps
- 1 x Test Base Clamp
- 1 x Linear Slide Shear Contact
- 10 x Bonding Mold Inserts

\$803.50 ea