



VALO Grand Cordless Kit

- 1 x VALO Grand LED curing light
- 4 x Rechargeable Batteries
- 1 x Battery charger
- 1 x Power supply with universal plugs for battery charger
- 1 x VALO Grand cordless light shield
- 1 x Handpiece bracket holder
- 1 x Sample pack of barrier sleeves

- 5972 Black
- 4865 Red Rock
- 4864 Sapphire
- 4866 Midnight

VALO Cordless Kit

- 1 x VALO Cordless LED curing light
- 4 x Rechargeable Batteries
- 1 x Battery charger
- 1 x Power supply with universal plugs for battery charger
- 1 x VALO Grand cordless light shield
- 1 x Handpiece bracket holder
- 1 x Sample pack of barrier sleeves

- 5941 Black

VALO Grand Corded Kit

- 1 x VALO Grand LED curing light - 7' cord
- 1 x Power supply with universal plugs - 6' cord
- 1 x Handpiece bracket holder
- 1 x Blue light blocking safety glasses
- 1 x Sample pack of barrier sleeves

- 5971 Black

VALO Corded Kit

- 1 x VALO LED curing light - 7' cord
- 1 x Power supply with universal plugs - 6' cord
- 1 x Handpiece bracket holder
- 1 x Blue light blocking safety glasses
- 1 x Sample pack of barrier sleeves

- 5919 Black

VALO Grand Lens Accessories

- 4082 VALO Grand PointCure 2pk
- 5934 VALO PointCure 2pk

- 4081 VALO Grand ProxiCure 2pk
- 5936 VALO ProxiCure 2pk

- 4084 VALO Grand Translume 2pk
- 5937 VALO Translume 2pk

- 4319 VALO Grand Black Light 1pk
- 5939 VALO Black Light 1pk

- 4658 VALO Grand Interproximal 2pk
- 4629 VALO Interproximal 2pk

- 4628 VALO Grand White Light 2pk



SCAN TO VIEW PRICING



ECLIPSING THE COMPETITION

BLACK | RED ROCK | SAPPHIRE | MIDNIGHT

ALL THE BENEFITS OF
THE REVOLUTIONARY, AWARD-WINNING
VALO™ CURING LIGHT,
WITH A 50% BIGGER LENS.

AVAILABLE ON VALO GRAND AND VALO CURING LIGHTS



UNPARALLELED POWER

Ultra-high-energy broadband LEDs produce a high-intensity light with an irradiance of 900–2100 mW/cm²



MULTIPLE WAVELENGTHS

Custom LEDs in three wavelengths polymerize all light-cured dental materials



DURABLE UNIBODY CONSTRUCTION

A bar of tempered, high-grade aerospace aluminum is CNC precision milled to create an extremely durable, lightweight handpiece



ACCESSIBILITY

The 11 mm head height allows easy and direct access to all curing sites¹



COLLIMATED BEAM

Optimally collimated beam delivers consistent, uniform power



MORE UNIFORM CURE

Unique glass lens system forms the collimated blended beam to give an even cure



AWARD-WINNING

The VALO family has won multiple Reality 5 Star Awards, Townie Choice Awards, Pride Institute “Best of Class” Technology Awards, and has been named one of Dentistry Today’s Top 50 Technology Products multiple times

EXCLUSIVE TO THE VALO GRAND LIGHT



LARGER TIP DIAMETER

The VALO Grand light has a 11.7 mm diameter lens, capable of covering 107 mm²



ADDITIONAL CURING BUTTON

Curing button on the underside facilitates intuitive operation



All VALO Grand and VALO LED curing lights use a custom, multiwavelength light-emitting diode (LED) for producing high-intensity light at 385–515 nm, which is capable of polymerizing all light-cured dental materials.

The VALO Grand and VALO curing lights also offer three curing modes to accommodate your preferences.

VALO LENS ACCESSORIES ADAPTABLE FUNCTIONS IN A SNAP



INTERPROXIMAL LENS

A 1 mm white light lens that allows white light to be placed between teeth for observation of shadows, anomalies, or caries in the interproximal spaces.



TRANSLUME™ LENS

Facilitates the visualization and location of cracks, defects in teeth, or restorative materials.



PROXICURE™ BALL LENS

Helps to hold the matrix band in interproximal contact during polymerization.



BLACK LIGHT LENS

Aids in detecting fluorescent particles in resins for easy differentiation from natural enamel.



POINTCURE™ LENS

A clear, 2.5 mm diameter lens used for pinpoint curing of small composites, to aid in positioning, and tack curing.

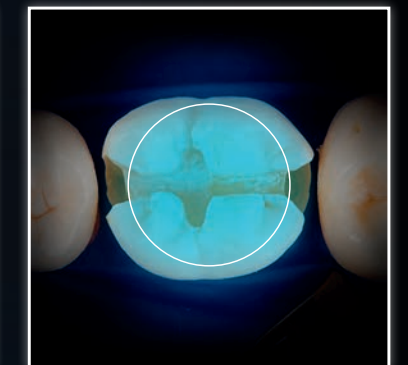
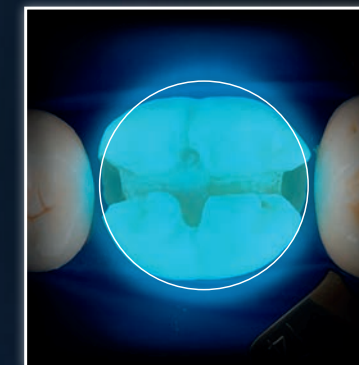
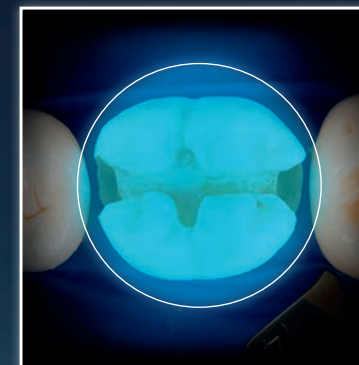


WHITE LIGHT LENS

Provides a pure, controlled, natural light source to aid in accurate shade matching. (VALO Grand unit only)

AREA COVERAGE COMPARISON

10 MM
MOLAR
COVERAGE



VALO™
GRAND

VALO™

AVERAGE
COMPETITOR

SURFACE
AREA

107
mm²

78
mm²

46
mm²

1. Moreira RJ, de Deus RA, Ribeiro MTH, et al. Effect of light-curing unit design and mouth opening on the polymerization of bulk-fill resin-based composite restorations in molars. *J Adhes Dent.* 2021;23(2):121–131. doi:10.3290/jjad.b1079561