

#### VALO Grand Cordless Kit

- 1 x VALO Grand LED curing light
- 4 x Batteries (rechargeable)
- 1 x Battery charger
- 1 x Power supply with universal plugs for battery charger
- 1 x Blue light blocking light shield
- 1 x Handpiece bracket holder
- 1 x Sample pack barrier sleeves

- 5972 Black
- 4864 Sapphire
- 4865 Red Rock
- 4866 Midnight

#### VALO Cordless Kit

- 1 x VALO Cordless LED curing light
- 4 x Batteries (rechargeable)
- 1 x Battery charger
- 1 x Power supply with universal plugs for battery charger
- 1 x Blue light blocking light shield
- 1 x Handpiece bracket holder
- 1 x Sample pack barrier sleeves

- 5941 Black

#### VALO Grand Corded Kit

- 1 x VALO LED curing light - 7' cord
- 1 x Power supply with universal plugs - 6' cord
- 1 x Handpiece bracket holder
- 1 x Blue light blocking light shield
- 1 x Sample pack barrier sleeves

- 5971 Black

#### VALO Corded Kit

- 1 x VALO LED curing light - 7' cord
- 1 x Power supply with universal plugs - 6' cord
- 1 x Handpiece bracket holder
- 1 x Blue light blocking light shield
- 1 x Sample pack barrier sleeves

- 5919 Black

#### VALO Grand Lens Accessories

- 4082 VALO Grand PointCure 2pk
- 5934 VALO PointCure 2pk

- 4081 VALO Grand ProxiCure 2pk
- 5936 VALO ProxiCure 2pk

- 4084 VALO Grand Translume 2pk
- 5937 VALO Translume 2pk

- 4319 VALO Grand Black Light 1pk
- 5939 VALO Black Light 1pk

- 4658 VALO Grand Interproximal 2pk
- 4629 VALO Interproximal 2pk

- 4628 VALO Grand White Light 2pk



ECLIPSING THE COMPETITION

BLACK | RED ROCK | SAPPHIRE | MIDNIGHT



ALL THE BENEFITS OF  
THE REVOLUTIONARY, AWARD-WINNING  
**VALO™ CURING LIGHT,**  
WITH A 50% BIGGER LENS.

AVAILABLE ON ALL VALO CURING LIGHTS



**UNPARALLELED POWER**

Ultra-high-energy broadband LEDs produce a high-intensity light with an irradiance of 800–2300 mW/cm<sup>2</sup>



**MULTIPLE WAVELENGTHS**

Custom LEDs in three wavelengths polymerize all light-cured dental materials



**DURABLE UNIBODY CONSTRUCTION**

A bar of tempered, high-grade aerospace aluminum is CNC precision milled to create an extremely durable, lightweight handpiece



**ACCESSIBILITY**

The 11 mm head height allows easy and direct access to all curing sites



**COLLATED BEAM**

Optimally collimated beam delivers consistent, uniform power



**MORE UNIFORM CURE**

Unique glass lens system forms the collimated blended beam to give an even cure



**AWARD-WINNING**

The VALO family has won multiple Reality 5 Star Awards, Townie Choice Awards, and Pride Institute “Best of Class” Technology Awards, and has been named one of Dentistry Today’s Top 50 Technology Products multiple times

EXCLUSIVE TO THE VALO GRAND LIGHT



**LARGER TIP DIAMETER**

The VALO Grand light has a 12 mm diameter lens, capable of covering 107 mm<sup>2</sup>



**ADDITIONAL CURING BUTTON**

Curing button on the underside facilitates intuitive operation



All VALO LED curing lights use a custom, multiwavelength light-emitting diode (LED) for producing high-intensity light at 385–515 nm, which is capable of polymerizing all light-cured dental materials.

Every member of the VALO curing light family also offers three curing modes to accommodate your preferences.

**VALO GRAND LENS ACCESSORIES** ADAPTABLE FUNCTIONS IN A SNAP



**INTERPROXIMAL LENS**

A focused 1 mm white light to help view interproximal caries.



**TRANSLUME™ LENS**

Aids in detection of cracks and defects in tooth or prostheses.



**PROXICURE™ BALL LENS**

Holds matrix against contact while curing composite for Class II restorations.



**BLACK LIGHT LENS**

Fluoresces chemicals in various dental materials.



**POINTCURE™ LENS**

Creates a 2.5 mm diameter curing area to aid in positioning and tack curing.

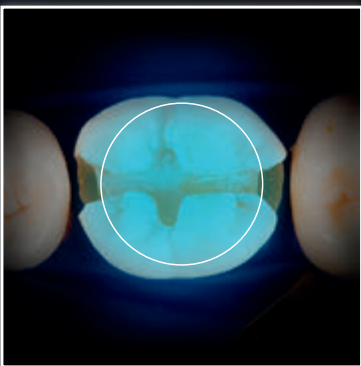
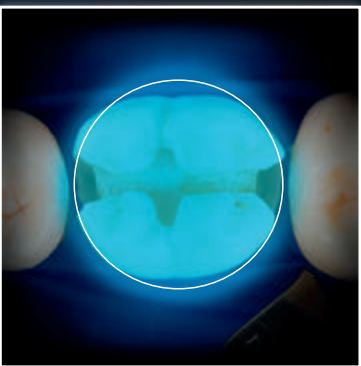
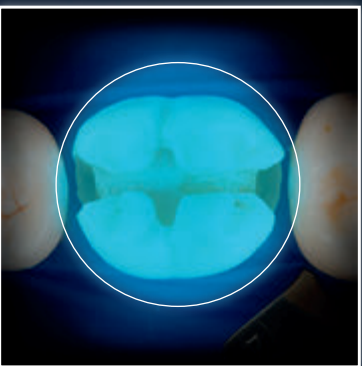


**WHITE LIGHT LENS**

Provides a pure natural light for accurate shade matching.

**AREA COVERAGE COMPARISON**

10 MM  
MOLAR  
COVERAGE



**VALO™**  
GRAND

**VALO™**

AVERAGE  
COMPETITOR

SURFACE  
AREA

**107**  
mm<sup>2</sup>

**78**  
mm<sup>2</sup>

**46**  
mm<sup>2</sup>