



Vit-l-escence™

Esthetic Restorative Material

Versatile, Artistic, Lifelike

Vit-l-escence composite features an array of dentin, enamel, and translucent shades, allowing you to re-create the look of natural teeth.



*The classic composite
for exquisite esthetics*



Effortlessly Beautiful Restorations

With an array of dentin, enamel, and translucent shades, Vit-I-escence composite allows you to re-create the look of natural teeth. From layering techniques to scalloping and halo effects, Vit-I-escence composite enables lifelike restorations that let you express the true artistry of esthetic dentistry.

Whether you're augmenting your current composite or embracing the entire array, Vit-I-escence composite allows you to explore the artistry involved in creating truly esthetic restorations. Its extensive catalog of shade offerings includes 28 total shades, giving you almost limitless options. Among those 28 shades are 12 translucent enamel shades, which allow you to reproduce natural-looking incisal margins for any patient. And the unique Iridescent Blue shade delivers the most realistic depth and dimension to your restorations, replicating the optical qualities of enamel prisms by refracting light from orange to blue.

In addition to its extensive range of shades, Vit-I-escence composite also features a microhybrid composition that allows it to be polished into an enamel-like gloss. And with a 52% fill volume, Vit-I-escence composite has a creamy texture for superior handling during cosmetic restorations.

Improving Mother Nature

Courtesy of Dr. Rafael Beolchi



Before



After

Courtesy of Dr. Jaleena Jessop



Before



After

Courtesy of Dr. Rafael Beolchi



Before



After

Duplicating Mother Nature

Courtesy of Dr. Simone Deliperi



Before



After

Courtesy of Dr. Newton Fahl

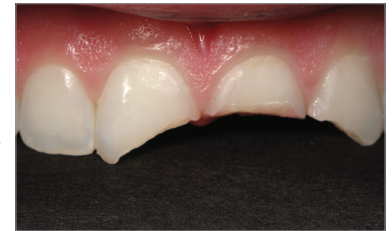


Before



After

Courtesy of Dr. Jaleena Jessop



Before






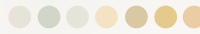






After

Layers and Shades

The characteristics of dentin (hue, shade, chroma) and enamel (value, translucency, opacity) create the subtle polychromatic nuances that define beautiful, natural teeth. Proper layering is the key factor in replicating these characteristics.

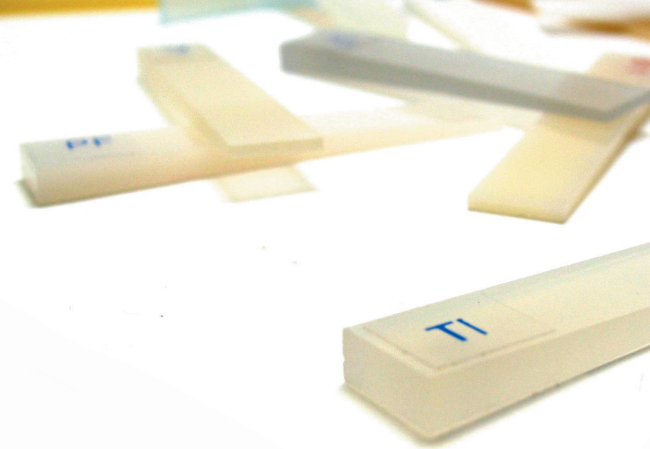
With its custom, wedge-shaped shade guide made from the actual composite, Vit-I-escence composite allows clinicians to determine the appropriate thickness of composite layers, contributing to an ideal final restoration.

In a simple technique, Vit-I-escence™ esthetic restorative material allows you to layer enamel shades over dentin shades, creating the most lifelike restorations possible.

Vit-I-escence Dentin ↓ Vit-I-escence Enamel		 Shades: A, B, C, D	1 SELECT HUE Identify the hue at the gingival third of the tooth and choose the best dentin shade accordingly.
		 Shades: 1, 2, 3, 3.5, 4, 5, 6	2 ESTABLISH CHROMA Identify the level of saturation at the middle third of the tooth. This may be the same dentin shade determining hue or could be an additional 1 or 2 dentin shades.
		 Shades: Pearl Frost, Pearl Neutral, Pearl Smoke, Pearl Amber	3 DETERMINE VALUE Use a value shade guide to identify the value of the tooth. Accurately replicating the value defines form and creates realistic spatial perceptions.
		 Shades: Trans Smoke, Trans Mist, Trans Ice, Trans Blue, Trans Gray, Iridescent Blue	4 IDENTIFY TRANSLUCENCY Translucency is typically seen at the incisal edge. Iridescent Blue reflects light in the yellow to blue range, adding dimension.
		 Shades: Opaque White, Opaque Snow	5 IDENTIFY UNIQUE OPACIOUS AREAS Replicate very bright, high-value areas such as hypocalcification, decalcification, stains, etc. Opaque shades can also be used for masking or blocking out dark dentin or enamel. Opaque White is the most opaque and has the highest value.
			Glossary of Terms: Hue: The wavelength of reflected light as determined by the dentin shade. The individual color of the tooth. Shade: The variance in hue due to the introduction of lighter or darker colors. Chroma: The level of saturation, or the intensity of the hue. Value: The lightness or darkness of the tooth. Translucency: The ability of a tooth to permit the passage of light. Opacity: The ability of a tooth to block the passage of light.

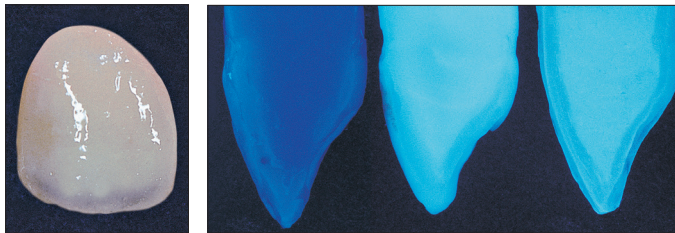
Features and Benefits

- Reproduces natural dentin and enamel exquisitely
- Performs well for both anterior and posterior restorations
- Is both creamy and sculptable
- Polishes beautifully
- Matches shade guide perfectly
- Available in 16 dentin shades and 12 enamel shades



Natural Enamel Opalescence and Dentin Fluorescence

Courtesy of Dr. L. Vanini.



Vit-l-escence Enamel

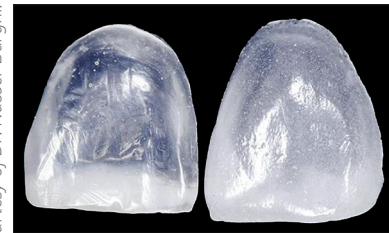
Traditional Composite

Natural Tooth

Vit-l-escence Dentin Shade

Vit-l-escence material can be even more translucent than porcelain.

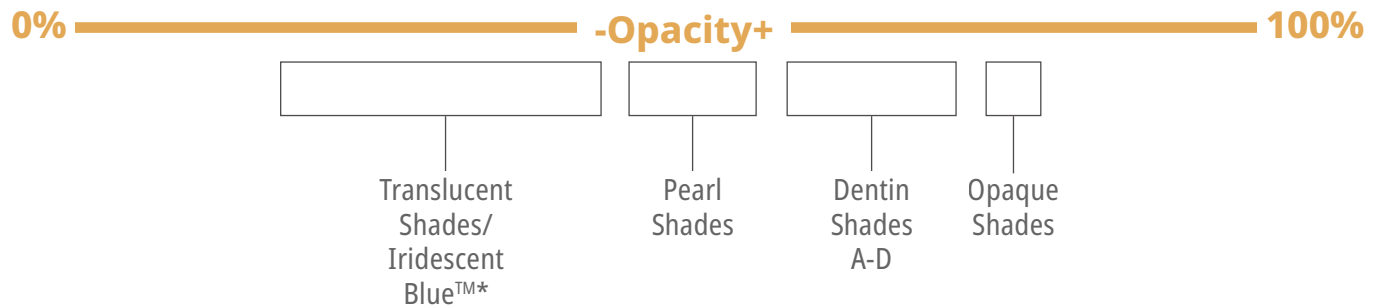
Courtesy of Dr. Nasser Barghi.



Vit-l-escence Composite

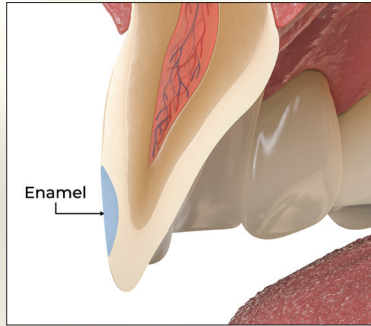
Porcelain

VIT-L-ESCENCE COMPOSITE SHADE OPACITY RANGE

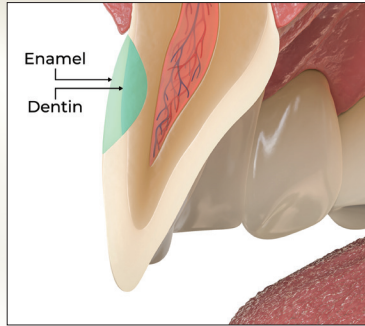


* Trans Ice, Trans Gray, Trans Mist, Trans Blue, Iridescent Blue, and Trans Smoke

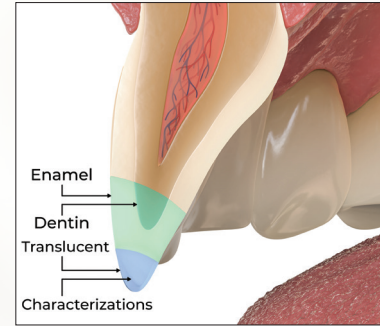
Direct Composite Layering Technique



For enamel-only restorations use a single shade of Vit-I-escence™ composite, usually enamel.



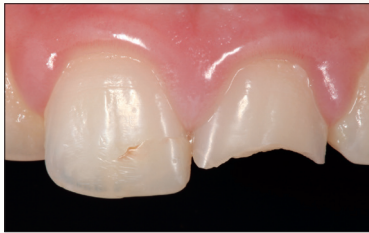
For the most common cases of both dentin and enamel restorations in intermediate-size cavities, use both a dentin and an enamel shade. Make sure that composite enamel layer is thinner than natural enamel layer.



For major enamel and dentin replacements or esthetically challenging restorations, use multiple dentin shades (darkest at the lowest point) and characterize with translucent shades if needed.

Vit-I-escence Material Layering Technique

Courtesy of Dr. Newton Fahl.



1. For Class IV restorations, veneers, or diastema closures. A silicon putty matrix fabricated from diagnostic wax-up is recommended.



2. Use matrix as a guide for basic shape of restoration and to support initial lingual placement of material.



3. Use thin layer of Pearl Neutral to establish lingual contour. This is not necessary if tooth structure exists on lingual wall.



4. Inner dentin body layer includes basic hue of exposed dentin. A3.5 is applied at cervical towards incisal. Create mamelons using a carver.



5. Cover body and extend enamel edge with appropriate translucent shade. To achieve a "halo" (white line at the incisal edge), place thin roll of Pearl Frost or Opaque Snow.



6. Make final adjustments with multifluted finishing burs. Use Jiffy™ cups, points, and disks for smoothing. Polish with Jiffy™ HiShine.



822 - Master's Shade Guide—24 Shades

A1, A2, A3, A3.5, A4, A5, B1, B2, OW, OS, PF, PN, PA, PS,
TF, TM, TS, TB, TO, TG, TI, TY, TA, IB

(Shades A6, B3, B4, B5, C1, C2, C3, C4, C5, and D3 are NOT included)



REFRIGERATE

3059 - Composite Wetting Resin Syringe 2pk

1 x 1.2 ml (1.85 g) syringes

Pair Composite Wetting Resin with any Ultradent composite to improve instrument and composite glide when sculpting and contouring.

REFRIGERATE

Vit-I-escence™ Syringe 2.5 g

Dentin	1pk	Enamel	1pk
A1	358	Opaque White™	1182
A2	343	Opaque Snow™	1183
A3	344	Pearl Frost™	443
A3.5	356	Pearl Neutral™	1184
A4	360	Pearl Amber™	1185
A5	362	Pearl Smoke™	1186
A6	408	Trans Mist™	482
B1	409	Trans Smoke™	485
B2	418	Trans Blue™	1188
B3	421	Trans Gray™	478
C1	426	Trans Ice™	479
C2	435	Iridescent Blue™	1317
C3	439		
C4	440		
C5	441		
D3	442		



x 1

REFRIGERATE

Vit-I-escence™ Single Capsules 0.3 g

Dentin	10pk	Enamel	10pk
A1	1219	Opaque White™	2238
A2	1202	Opaque Snow™	1212
A3	1203	Pearl Frost™	1196
A3.5	1204	Pearl Neutral™	1197
A4	1220	Pearl Amber™	1210
A5	2230	Pearl Smoke™	1198
A6	2231	Trans Blue™	2242
B1	1205	Trans Ice™	2245
B2	1223	Iridescent Blue™	2248
B3	2232		
C1	1227		
C2	1228		
C3	1229		
C4	2235		
C5	2236		
D3	2237		



x 10

Combine these Ultradent products with Vit-I-escence composite to provide quick, beautiful, and minimally invasive esthetic options to your patients.

Ultra-Etch™
Etchant



Peak™ SE
Primer

Peak™
Universal Bond
Adhesive



Composite Wetting Resin
Light-Cured Wetting Resin



VALO X™
Curing Light



Jiffy™
Finishing Systems



Etch & Bond

Composite

Curing

Finishing