

### Mosaic Introduction

#### 4801 Mosaic Syringe Intro Kit

1 x 4 g syringe of each shade:  
A1, A2, A3, EN, ET  
1 x Mosaic Shade Guide

(20 g total)



#### 4802 Mosaic Singles Intro Kit

1 x Singles 10pk of each shade:  
A1, A2, A3, EN, ET  
1 x Mosaic Shade Guide

(10 g total)



#### 4803 Mosaic Shade Guide

20 x Shade Tabs



### Mosaic Refills

#### 4 g Syringe Refills 1pk

- |           |                     |
|-----------|---------------------|
| 4760 A0.5 | 4773 Enamel Yellow  |
| 4761 A1   | 4774 Enamel Blush   |
| 4762 A2   | 4775 Enamel Gray    |
| 4763 A3   | 4776 Enamel Neutral |
| 4764 A3.5 | 4777 Enamel White   |
| 4765 A4   | 4778 Opaque White   |
| 4766 A5   | 4779 Enamel Trans   |



x1

- |           |
|-----------|
| 4767 B0.5 |
| 4768 B1   |
| 4769 B2   |
| 4770 C2   |
| 4771 C3   |
| 4772 D2   |

1 x 4 g syringe

#### 0.2 g Single Refills 10pk

- |           |                     |
|-----------|---------------------|
| 4799 A0.5 | 4792 Enamel Yellow  |
| 4780 A1   | 4793 Enamel Blush   |
| 4781 A2   | 4794 Enamel Gray    |
| 4782 A3   | 4795 Enamel Neutral |
| 4783 A3.5 | 4796 Enamel White   |
| 4784 A4   | 4797 Opaque White   |
| 4785 A5   | 4798 Enamel Trans   |



x10

- |           |
|-----------|
| 4786 B0.5 |
| 4787 B1   |
| 4788 B2   |
| 4789 C2   |
| 4790 C3   |
| 4791 D2   |

10 x 0.2 g single (2 g total)

### Mosaic Shade Guide

The unique, composite-made layered shade guide makes it easy to visualize the final result. The thirteen dentin shades on the left feature a thin layer of Enamel Neutral over the coronal portion of each tab.



13 DENTIN SHADES

Tapered Handle = Dentin Only  
Tooth = Dentin + Enamel Neutral Layer

6 ENAMEL SHADES

Not Layered

OPAQUE WHITE

Not Layered

# mosaic™

Universal Composite

A precise balance of handling, esthetics, and performance



# mosaic™

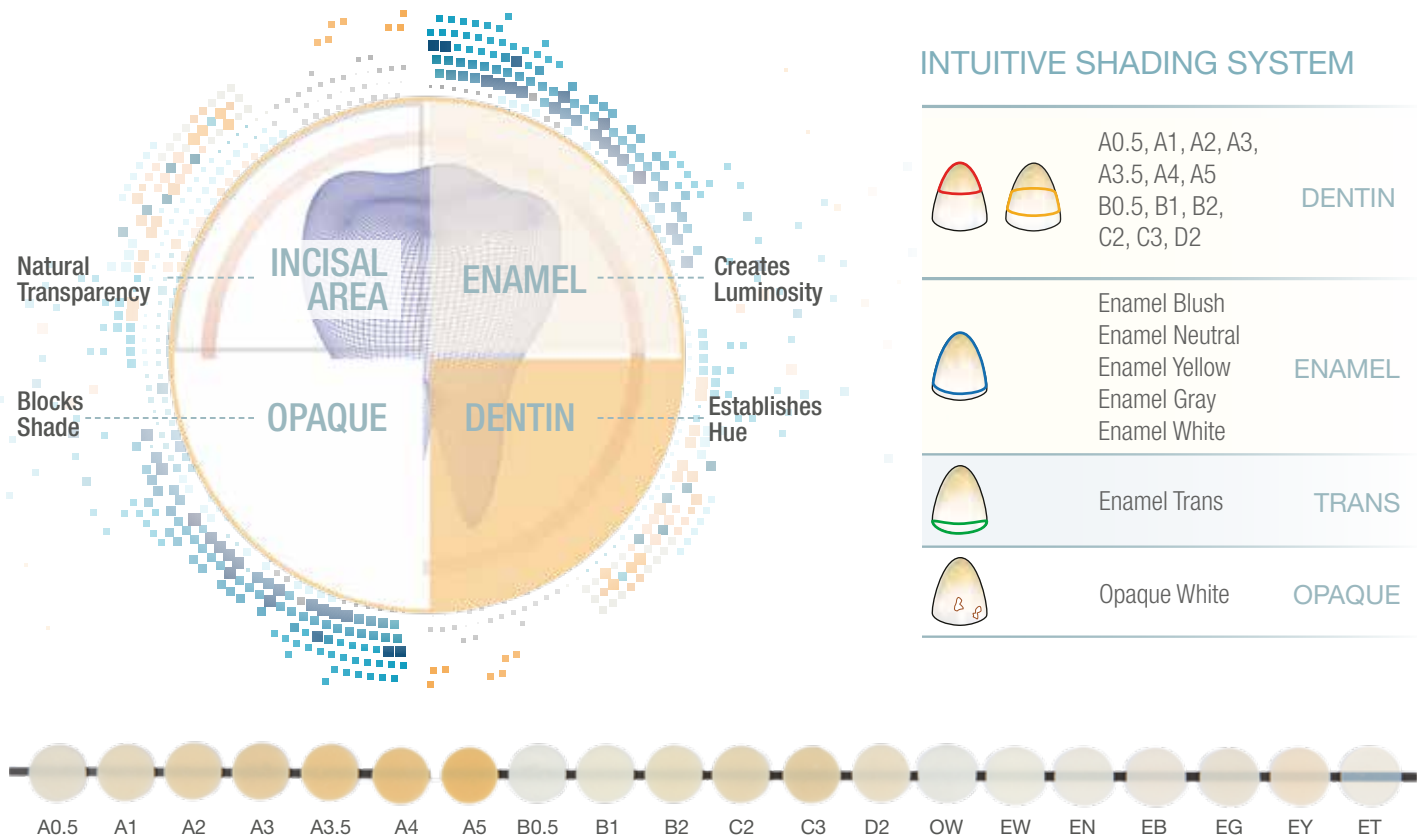
Universal Composite

Mosaic universal composite can be used for all restorative purposes: basic or complex. Its well-balanced nanohybrid formula produces restorations of the highest quality.

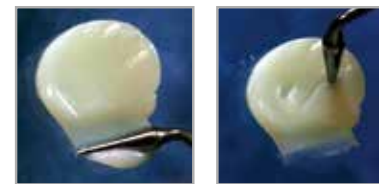
Choose between an innovative syringe or a classic unit dose delivery.



Twenty intuitive shade options produce predictable, natural results.



Highly sculptable handling properties provide total control during manipulation.



- Smooth, pliable consistency
- Cuts easily and doesn't stick to instruments
- Won't flow or slump out of place after being shaped
- Allows ample working time under ambient light

Universal application suits Class I–V restorations in both anterior and posterior regions.



Esthetic restoration using Mosaic composite shades: A4, A3, A2 and A1 from cervical to incisal. Enamel White and Opaque White on the incisal edge. Photos courtesy of Dr. Rafael Beolchi



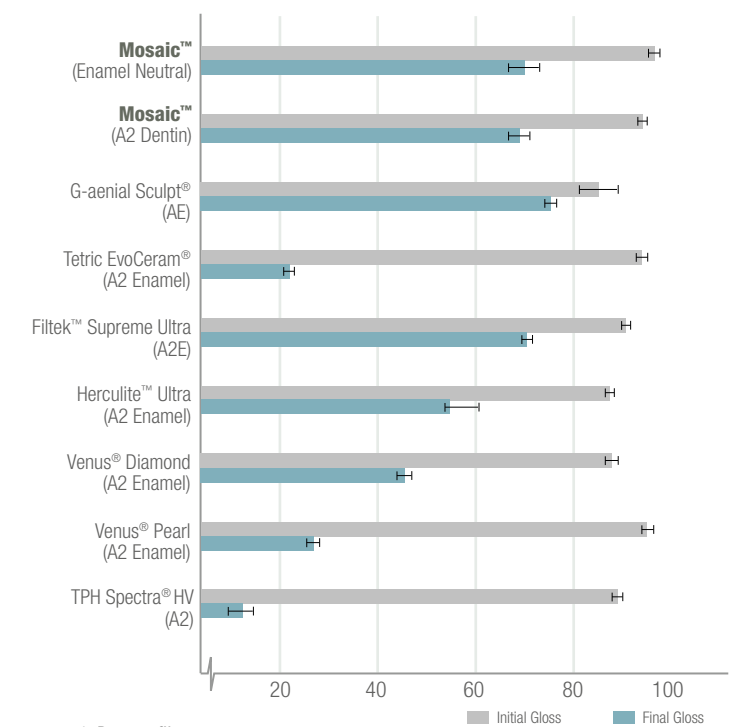
Class II restoration using the Peak® Universal Bond adhesive system with Mosaic composite shades A5 and Enamel Neutral. Photos courtesy of Dr. Gaetano Paolone

Balanced performance ensures both functional durability and esthetic longevity.

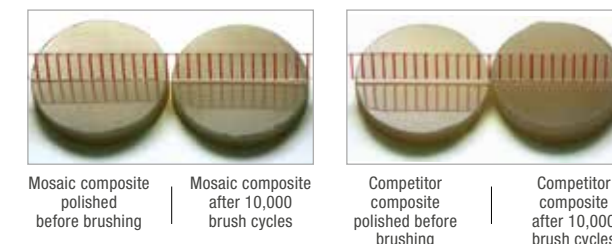
### TECHNICAL OVERVIEW<sup>1</sup>

	DENTIN SHADES	ENAMEL SHADES
Shrinkage Volume	2.6%	3.7%
Shrinkage Stress	3.94 MPa	6.06 MPa
Compressive Strength	486.4 MPa	447.6 MPa
Hardness	66.9 HK	65.4 HK
Flexural Strength	166.1 MPa	176.7 MPa
Flexural Modulus	17.3 GPa	11.7 GPa
Water Sorption	≤40 µg/mm <sup>3</sup>	≤40 µg/mm <sup>3</sup>
Water Solubility	≤7.5 µg/mm <sup>3</sup>	≤7.5 µg/mm <sup>3</sup>
Radiopacity	≥2 mm Al (200%)	≥2 mm Al (200%)
Working Time (Ambient Light)	4:00 min	4:00 min
Depth of Cure	2 mm	2 mm
% Fill by Volume	68%	56%

### GLOSS RETENTION COMPARISON<sup>2</sup>



### GLOSS RETENTION COMPARISON



1. Data on file.  
2. Data on File. Final gloss measured after 10,000 brush cycles in gloss units (GU).