



- 4518 - Enamelast Unit-Dose Econo Kit - **Walterberry**
- 4344 - Enamelast Unit-Dose Econo Kit - **Orange Cream**
- 4353 - Enamelast Unit-Dose Econo Kit - **Cool Mint**
- 4363 - Enamelast Unit-Dose Econo Kit - **Bubble Gum**
- 4819 - Enamelast Unit-Dose Econo Kit - **Caramel**
- 5188 - Enamelast Unit-Dose Econo Kit - **Flavor-Free**  
50 x 0.4 ml unit doses



- 4368 - Enamelast Unit-Dose 200pk - **Variety Pack**  
50 x 0.4 ml unit doses - **Walterberry**  
50 x 0.4 ml unit doses - **Cool Mint**  
50 x 0.4 ml unit doses - **Bubble Gum**  
50 x 0.4 ml unit doses - **Orange Cream**



- 4528 - Enamelast Unit-Dose 200pk - **Walterberry**
- 4343 - Enamelast Unit-Dose 200pk - **Orange Cream**
- 4352 - Enamelast Unit-Dose 200pk - **Cool Mint**
- 4362 - Enamelast Unit-Dose 200pk - **Bubble Gum**
- 4822 - Enamelast Unit-Dose 200pk - **Caramel**
- 5187 - Enamelast Unit-Dose Econo Kit 200pk - **Flavor-Free**  
200 x 0.4 ml unit doses



- 4821 - Enamelast Unit-Dose 200pk - **Variety Pack**  
50 x 0.4 ml unit doses - **Walterberry**  
50 x 0.4 ml unit doses - **Cool Mint**  
50 x 0.4 ml unit doses - **Bubble Gum**  
50 x 0.4 ml unit doses - **Caramel**



- 4521 - Enamelast Syringe Kit - **Walterberry**  
2 x 1.2 ml syringes  
4 x SoftEZ tips



- 4529 - Enamelast Application Brushes  
200 x Brushes



- 4523 - Enamelast Syringe Kit - **Walterberry**  
20 x 1.2 ml syringes



# MORE THAN JUST GREAT TASTE!

Enamelast fluoride varnish has been proven to have both a high fluoride release and a high fluoride uptake compared to similar products.<sup>1</sup> And with a **patented** **adhesion-promoting agent** that enhances retention, you can be sure that your patients are receiving the full benefits of treatment.



INTRODUCING  
**FLAVOR-FREE ENAMELAST VARNISH**

1. Schemehorn BR. Sound enamel fluoride uptake from a fluoride varnish. 2013. Data on file.



SCAN TO VIEW PRICING





Enamelast fluoride varnish is a flavored, xylitol-sweetened 5% sodium fluoride in a resin carrier.



## Everything You Need

### EFFECTIVE FORMULA

Enamelast fluoride varnish has been proven to have both a high fluoride release and a high fluoride uptake when compared to similar products.<sup>1</sup> The high release rate indicates the amount of fluoride that's available in each treatment, and the high uptake reflects the efficient absorption of fluoride ions.

### PATENTED ADHESION

Enamelast varnish features a patented adhesion-promoting agent that enhances retention, which means your patients can receive the full benefits of the varnish.

### CONVENIENT DELIVERY

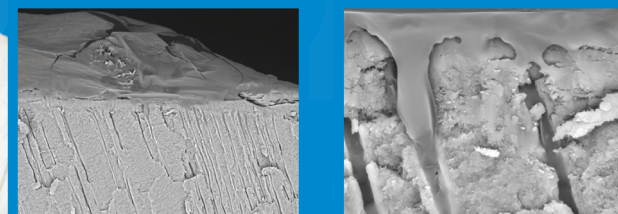
Choose between two delivery options: unit-dose blister packs or a syringe and tip delivery system with enough varnish for two to four patients.

### INCREDIBLE VALUE

Enamelast varnish isn't just effective—it's also economical, giving you exceptional value for your time and money.

### USE AS A SENSITIVITY TREATMENT FOR WHITENING

Enamelast varnish produces a mechanical occlusion of the dentinal tubules in the treatment of tooth hypersensitivity. This makes it ideal to use before or after whitening to help ease patient discomfort in the cervical area.



## Everything Your Patient Wants

### SMOOTH TEXTURE

The smooth feel of Enamelast varnish will make your patients want to leave it in place.

### NEARLY INVISIBLE APPEARANCE

Enamelast varnish is nearly invisible on the tooth.

### GREAT FLAVOR

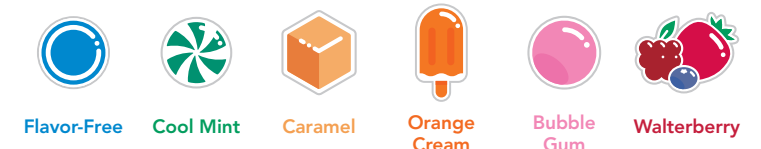
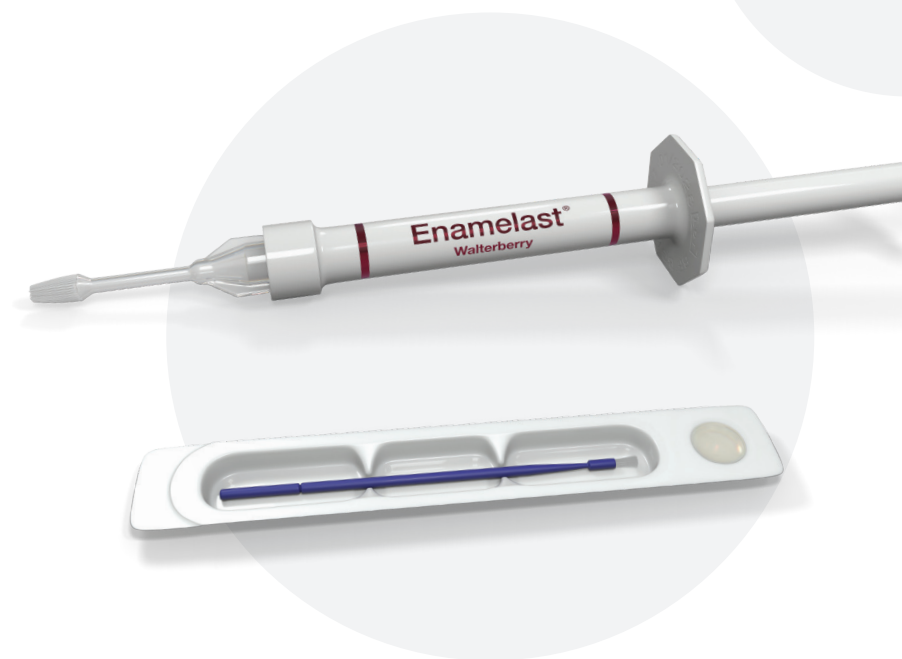
Enamelast varnish comes in six great choices—Walterberry, Orange Cream, Bubble Gum, Cool Mint, Caramel, and Flavor-Free. Every flavor is **NUT FREE** and **GLUTEN FREE**.



Before Enamelast varnish

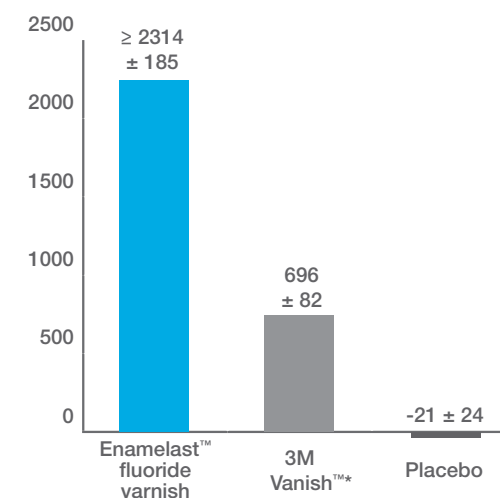


After applying Enamelast varnish

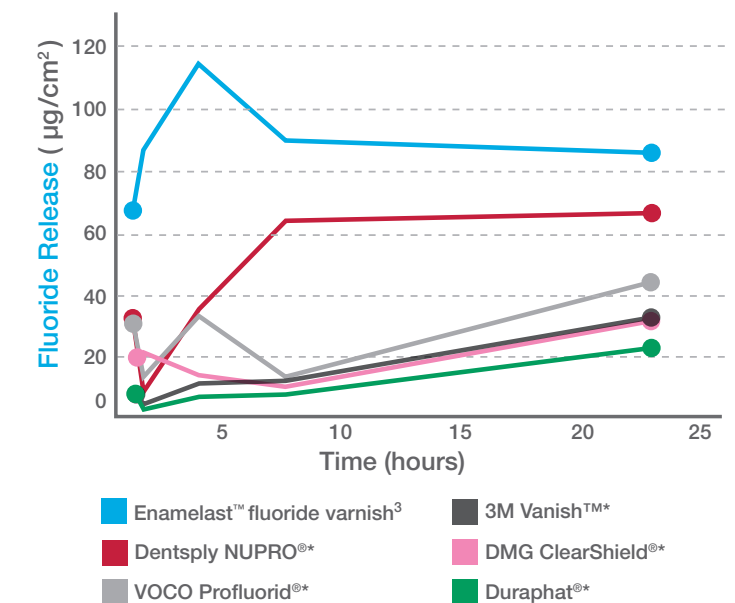


## Technical Data

### FLUORIDE UPTAKE ( $\mu\text{g F}/\text{cm}^3$ )<sup>1</sup>



### FLUORIDE RELEASE<sup>2</sup>



<sup>1</sup>Not a trademark of Ultradent Products, Inc. <sup>1</sup>Schemerhorn BR. Sound enamel fluoride uptake from a fluoride varnish. 2013. Data on file. <sup>2</sup>Data on file. <sup>3</sup>Test results based on Walterberry flavor.