

# J-Temp™

TEMPORARY RESIN

STEP-BY-STEP



See instructions for use

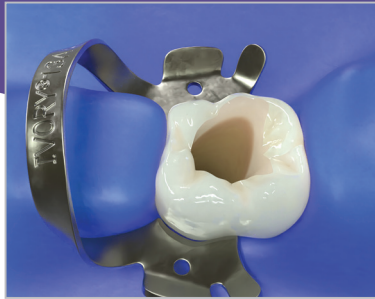
**UP**  
ULTRADENT  
PRODUCTS, INC.



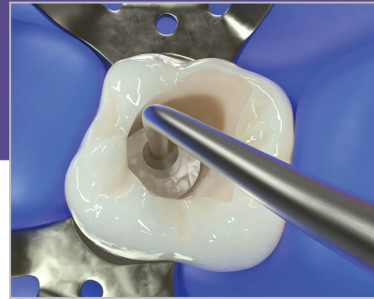
## INDICATIONS FOR USE

- Temporary restorations (endodontics, inlay/onlay, cusp buildup)
- Splinting between multiple implant copings for impressions to resist impression material distortion
- To provide structure for isolation clamping and to act as a barrier for endodontic irrigants
- Bite ramps and temporary occlusal buildups during orthodontics

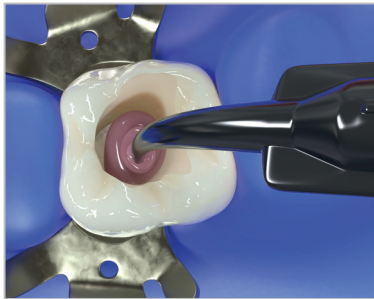
# TEMPORARY RESTORATION: ENDODONTICS



1. Prepare root canal system



2. Insert cotton pellet (or other barrier) and pack to protect the root canal entrance

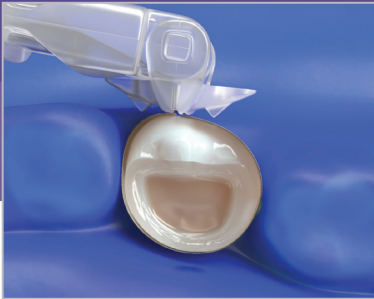


3. Apply J-Temp™ temporary resin incrementally in 2-3 mm layers

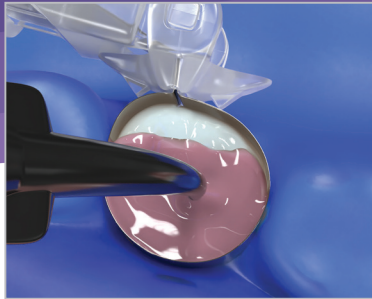


4. Light cure in-between layers and use burs to adjust occlusion

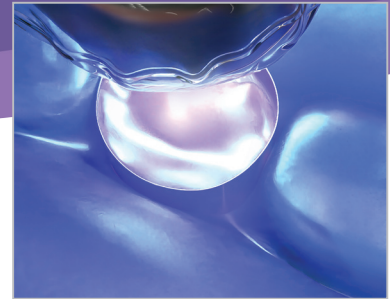
## TEMPORARY RESTORATION: INLAY AND ONLAY



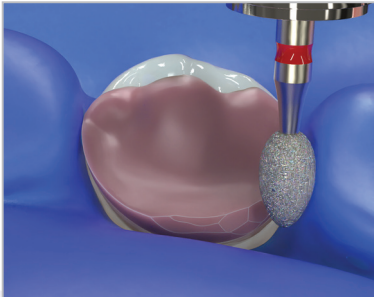
1. After preparation, place matrix band



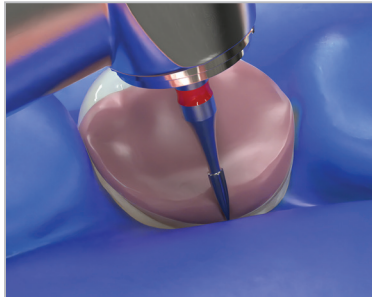
2. Apply J-Temp™ temporary resin incrementally in 2–3 mm layers



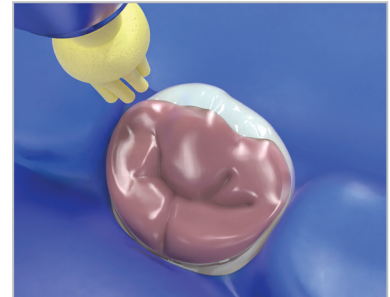
3. Light cure in-between layers



4. Remove the matrix band and begin shaping

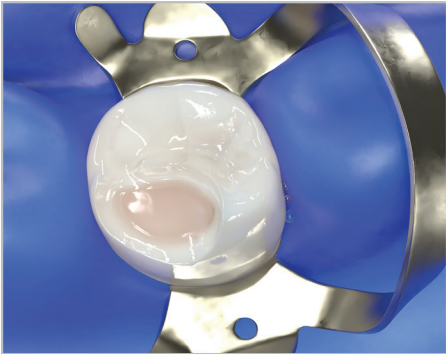


5. Use burs to adjust occlusion

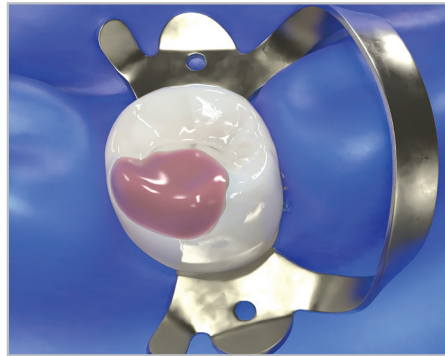


6. Polish and check occlusion

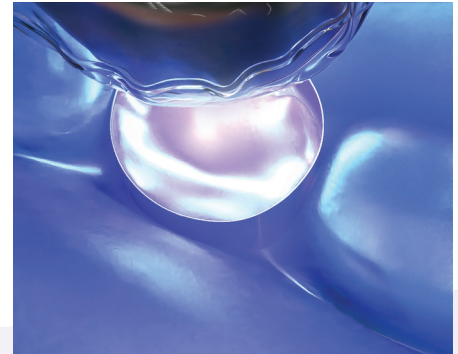
# TEMPORARY RESTORATION: TOOTH BUILDUP



1. Apply J-Temp™ temporary resin to restore missing tooth structure



2. Apply J-Temp™ temporary resin incrementally in 2–3 mm layers



3. Light cure in-between layers

# BITE RAMPS AND TEMPORARY OCCLUSAL BUILDUPS DURING ORTHODONTICS



1. Etch occlusal or lingual tooth surface



2. Rinse



3. Apply adhesive and air thin



CONTINUED 



4. Light cure



5. Apply J-Temp™ temporary resin incrementally in 2-3 mm layers



6. Light cure in-between layers



7. Using a dental bur, adjust to desired height and shape

# TO PROVIDE STRUCTURE FOR ISOLATION CLAMPING AND TO ACT AS A BARRIER FOR ENDODONTIC IRRIGANTS



1. Rubber dam cannot be applied due to insufficient tooth structure



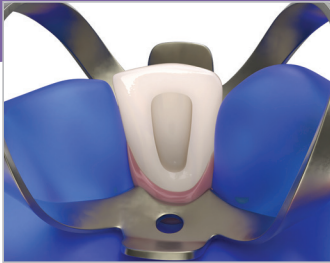
2. Replace missing tooth structure by placing J-Temp™ temporary resin in 2-3 mm layers and light cure in-between layers



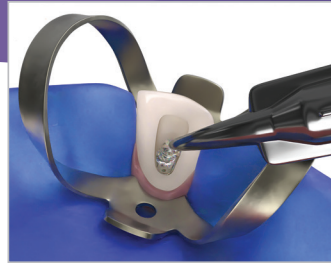
3. Rubber dam can now be securely placed to provide a barrier for irrigants



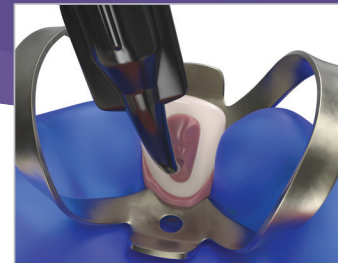
# WALKING BLEACH TECHNIQUE



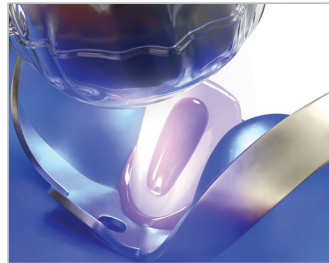
1. Evaluate, prepare, and seal pulp chamber



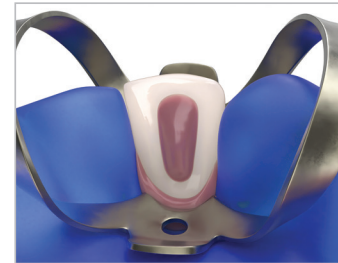
2. Fill pulp chamber with whitening gel, leaving 3–5 mm of space for J-Temp™ temporary resin



3. Apply J-Temp™ temporary resin incrementally in 2–3 mm layers



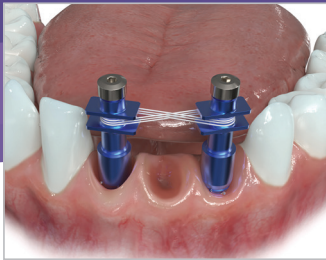
4. Light cure in-between layers



5. J-Temp™ temporary resin can be removed and replaced for each additional whitening appointment

**NOTE:** Ensure to not displace the whitening gel onto the margins as this may compromise the temporary seal.

# SPLINTING BETWEEN MULTIPLE IMPLANT COPINGS FOR IMPRESSIONS TO RESIST IMPRESSION MATERIAL DISTORTION



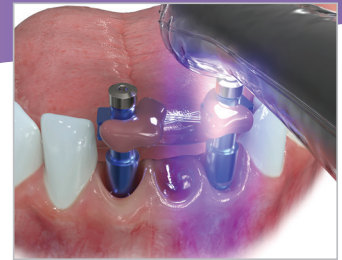
1. Secure floss between implant copings (optional)



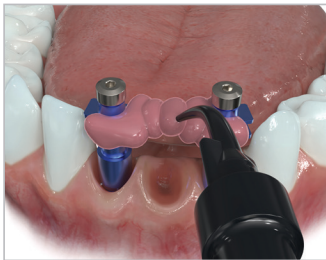
2. Place J-Temp™ temporary resin in 2–3 mm increments



3. Alternate sides, working towards the middle



4. Light cure in-between each increment



5. Final increment connecting the two sides should be as small as possible to minimize shrinkage

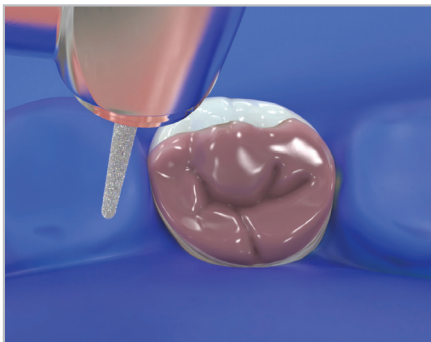


6. Light cure final increment



7. Ready for impression

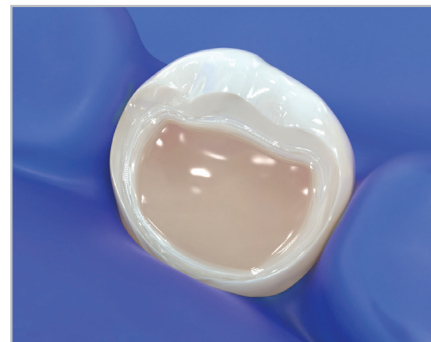
## REMOVING J-TEMP™ TEMPORARY RESIN



1. Remove the bulk of J-Temp™ temporary resin with a standard bur



2. Final thin layer of J-Temp™ temporary resin can be removed with a hand instrument or low speed bur



3. J-Temp™ temporary resin will be completely removed when all colored resin is gone

THANK YOU FOR CHOOSING

# J-Temp™

TEMPORARY RESIN

