

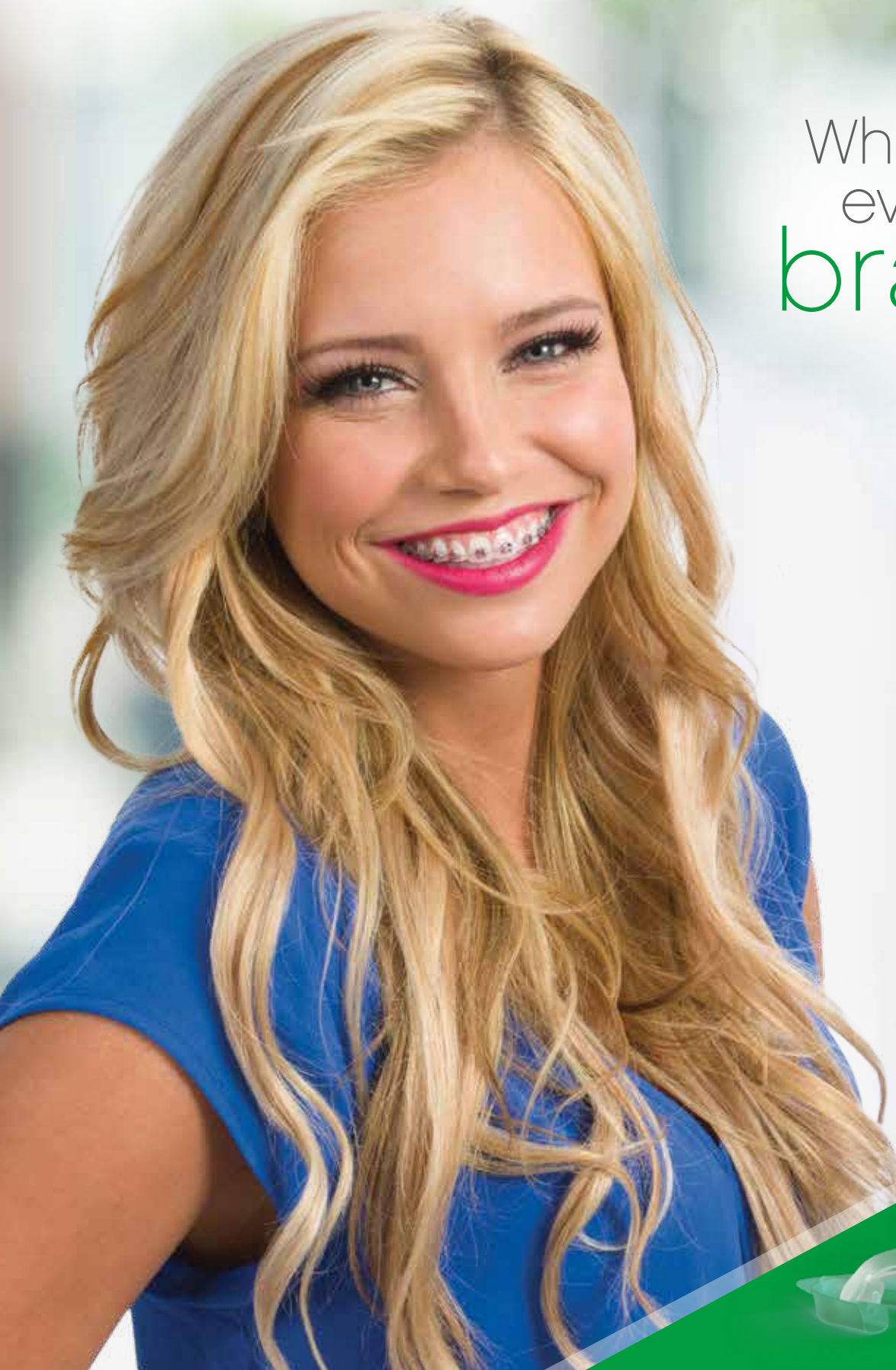
Opalescence



Tooth Whitening



Whiter teeth
even with
braces!





Opalescence Go whitening features the UltraFit™ tray, which adapts to the smile of any patient—even those wearing orthodontic appliances. The unique tray material easily adapts around brackets for a comfortable and effective whitening experience. Opalescence Go whitening is the perfect option for whitening smiles with braces and giving every patient an extra measure of confidence at every stage of their orthodontic treatment.

Features of Opalescence Go Whitening

- Convenient prefilled trays can be worn right out of the package
- Available in 10% and 15% hydrogen peroxide (10% wear times from 30–60 minutes, 15% wear times from 15–20 minutes)
- Optimal gel quantity allows easy cleanup after whitening
- Every patient kit includes a 1-ounce tube of Opalescence™ Whitening Toothpaste

Opalescence Go Patient Kits Case of 6

Flavor	10%	15%
Mint	4635-US	4638-US
Melon	4636-US	—

10 x Each upper/lower trays and a 1-ounce tube of toothpaste in each kit



Opalescence Go Mini Kits Case of 12

Flavor	10%	15%
Mint	4645-US	4648-US
Melon	4646-US	—

4 x Each upper/lower trays in each kit



Opalescence Go Sample Dispenser Kits

Flavor	10%	15%
Mint	4893-US	4894-US
Melon	4890-US	—

20 x Each upper/lower trays in each kit
20 x Patient instructions



Refrigeration is recommended for all Opalescence Go whitening products.

Instructions



1. Remove product from packaging.
"U" - Upper whitening tray
"L" - Lower whitening tray



2. Position upper tray on teeth.



3. Bite firmly, then suck on tray for 2 seconds.



4. Remove colored outer tray, leaving the white inner tray on teeth. Repeat the process for the lower tray.



5. After indicated wear time, remove whitening trays and brush teeth.

