

ExperTemp™

Temporary Crown & Bridge Material



Keep Your Patients Smiling



Even a temporary restoration should maintain both the function and esthetics of natural dentition. With ExperTemp™ temporary crown and bridge material you can create provisionals that will closely resemble the final restoration and keep your patients smiling between appointments.

ExperTemp™

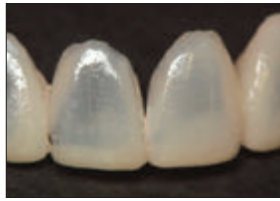
Temporary Crown & Bridge Material

ExperTemp material is a bis-acryl composite used to fabricate temporary crowns, bridges, inlays and onlays, as well as long-term temporaries. The 10:1 self-cured chemistry is easy to work with and provides exceptional strength, flexibility, and abrasion resistance. Superior performance combined with a natural esthetic make ExperTemp material the ideal choice for temporization.

- Trims easily and polishes beautifully
- Exhibits low oxygen inhibition at polymerization
- Possesses high abrasion resistance and flexibility
- Fluoresces similarly to enamel
- Comes in multiple shades: A1, A2, A3, A3.5, B1, and Bleach White
- Can be repaired with a packable composite, a flowable composite, or additional ExperTemp material



1. Prep teeth. Scour with Consepis™ scrub slurry and STARbrush™ intercoronal brush



2. ExperTemp temporary crown and bridge with esthetic translucency



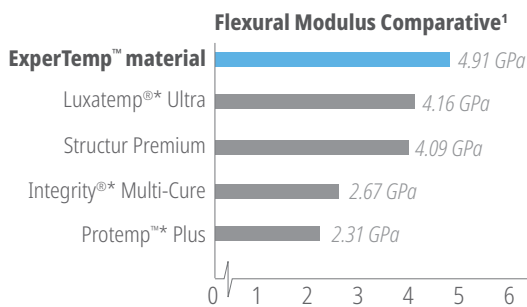
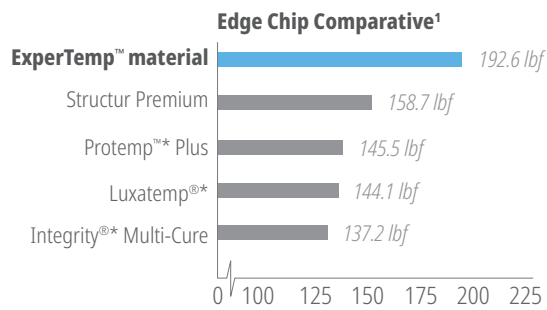
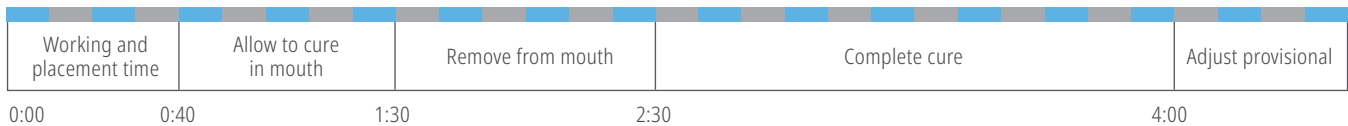
3. Apply ClearTemp™ LC temporary cement



4. Use blade to open embrasures without opening margins



5. ExperTemp material achieves esthetic blend with natural teeth



ExperTemp Cartridge Kits

Shade	Kit	Shade	Kit
A1	6341	A3.5	6342
A2	6340	B1	6343
A3	6347	Bleach White	6344

1 x 50 ml cartridge
15 x Mixing tips



6345 - ExperTemp Dispensing Gun 1pk
10:1/4:1 dispensing gun

6346 - ExperTemp Mixing Tips 45pk



*Trademark of a company other than Ultradent. 1. Data on file