

IMPRESSIVE DETAIL

Chromaclone™ PVS

—a lasting impression

Chromaclone PVS impression material captures even the smallest details, enabling you to make effective impressions the first time, every time. Its extremely low contact angle allows it to flow deep into the sulcus for highly visible margins. And its superior tear resistance and elastic recovery keep Chromaclone PVS material dimensionally stable for weeks, so you can pour at your convenience.

- Easy-to-use thixotropic formula
- Super hydrophilic
- Highly accurate, even with multiple pours
- Four viscosities, fast and regular set
- Clone Bite for bite registration
- Delicious Bubble Gum flavor



Chromaclone™ PVS

impression material



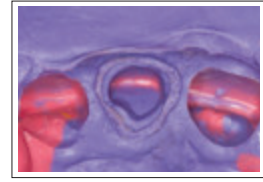
1. Start by applying wash material around outer edges of preparation.



2. Cover preparation in wash material.



3. Insert tray and make impression.



4. Chromaclone PVS provides excellent margin detail.

Chromaclone™ PVS

impression material



SUPER LIGHT LIGHT MEDIUM HEAVY CLONE BITE

50 ml	Regular 2pk	Fast 2pk
Super Light	—	7601
Light	5030	5031
Medium	5020	5021
Heavy	5010	5011

2 x 50 ml cartridges
10 x Mixing tips
10 x IntraOral tips included with Super Light and Light only



50 ml	Regular 10pk	Fast 10pk
Super Light	—	—
Light	5032	5033
Medium	5022	5023
Heavy	5012	5013

2 x 50 ml cartridges
25 x Mixing tips
50 x IntraOral tips included with Light only



50 ml	2pk
55 second Clone Bite	7600

2 x 50 ml cartridges
12 x Mixing tips



Impression Mixing Tips

Refill	50pk
Yellow	2902
Pink	2903
Teal	2904



2906 - IntraOral Impression Tips 50pk



Chromaclone™ PVS Accessories



5040 - Chromaclone PVS Putty Kit
1 x Each 250 g base and 250 g catalyst, and 2 scoops

5100 - Dispensing Gun 1pk



4074 - Tray Adhesive 10 ml Bottle 1pk



SCAN TO VIEW PRICING