

UltraSeal XT™ plus⁺

Hydrophobic Pit and Fissure Sealant



UltraSeal XT plus Syringe Kits

Shade	Kit
Opaque White	725
Clear	563
A1	1286
A2	733

- 1 x 1.2 ml UltraSeal XT plus syringe
- 1 x 1.2 ml Ultra-Etch syringe
- 2 x 1.2 ml PrimaDry syringes
- 10 x Blue Micro tips
- 10 x Black Micro FX tips
- 20 x Inspiral Brush tips

UltraSeal XT™ hydro

Fluorescing Hydrophilic Pit and Fissure Sealant



UltraSeal XT hydro Syringe Kits

Shade	Kit
Opaque White	3532
Natural	3533

- 1 x 1.2 ml UltraSeal XT hydro syringe
- 1 x 1.2 ml Ultra-Etch syringe
- 20 x Blue Micro tips
- 20 x Inspiral Brush tips



UltraSeal XT™ hydro

UltraSeal XT™ plus⁺

PrimaDry™
DRYING AGENT



UltraSeal XT plus Syringe 4pk and 20pk

Shade	4pk	20pk
Opaque White	726	727
Clear	565	—
A1	1289	—
A2	734	—

1.2 ml syringes



UltraSeal XT hydro Syringe 4pk and 20pk

Shade	4pk	20pk
Opaque White	3534	3536
Natural	3535	—

1.2 ml syringes



716 - PrimaDry Syringe 4pk
717 - PrimaDry Syringe 20pk
1.2 ml syringes



35551 - Black Light Keychain 1pk

ULTRASEAL XT™

PIT AND FISSURES SEALANTS

Reduce the Risk of Moisture Contamination,
Reduce Sealant Failure

UltraSeal XT plus hydrophobic sealant is used in conjunction with PrimaDry drying agent, which allows complete penetration into the pits and fissures. UltraSeal XT hydro sealant features a hydrophilic technology, so it is more forgiving of moisture deep in the pits and fissures.



SCAN
TO VIEW
PRICING

UltraSeal XTTM plus⁺TM

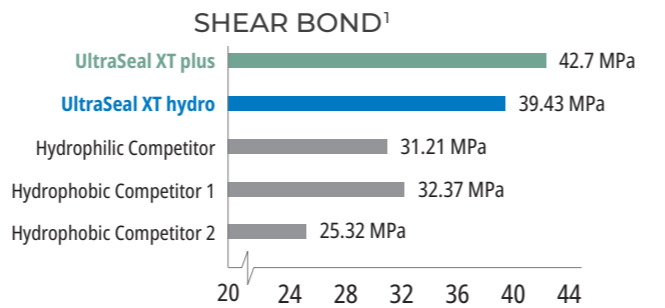
Hydrophobic Pit and Fissure Sealant

- Direct delivery into difficult-to-access areas
- Bubble-free, drip-free placement
- Resin based sealants have high retention rates²
- Highly filled resin - 58%
- Penetrates deepest pits and fissures¹
- Thixotropic/ideal viscosity flowability¹
- Four shades: Opaque White, Clear, A1, and A2

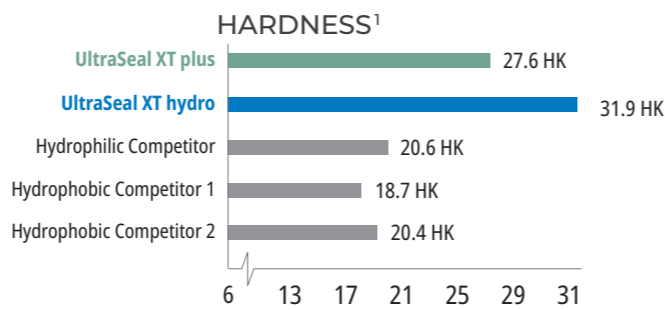
UltraSeal XT plus hydrophobic pit and fissure sealant is a light-cured, radiopaque composite sealant that contains fluoride. It is stronger and more wear resistant because it is a 58%-filled resin and has less polymerization shrinkage than competitive products¹. Used with the InspiralTM Brush Tip, the thixotropic nature of UltraSeal XT plus sealant causes itself to thin as it's expressed from the tip—allowing it to penetrate deep into the pits and fissures. When the resin stops flowing the shear thinning ceases and placement is complete¹—preventing it from running before it can be light cured.



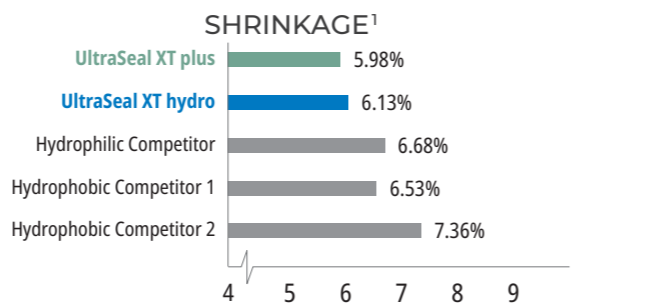
PHYSICAL PROPERTY COMPARISON



High shear bond strength is essential for retaining the sealant under normal use.



High hardness indicates a strong, durable sealant that won't break away or wear down.



Low shrinkage reduces the risk of marginal gaps which can lead to microleakage.

BEFORE AND AFTER

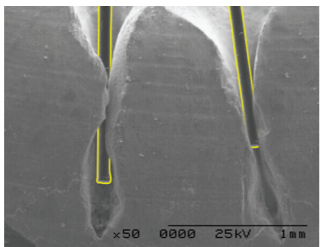
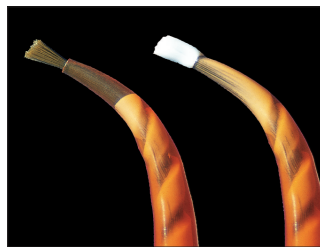


Before.



After UltraSeal XT plus sealant.

DESIGNED TO DELIVER



With its adjustable fibers and helical channel, the InspiralTM Brush tip is designed to optimally deliver UltraSeal XT sealants.

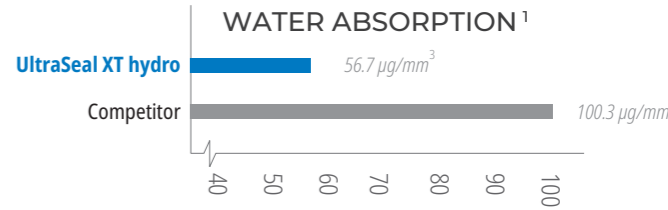
Image of the bristles and tooth (on the left) were taken at the same magnification, and then overlaid.

UltraSeal XTTM hydro⁺TM

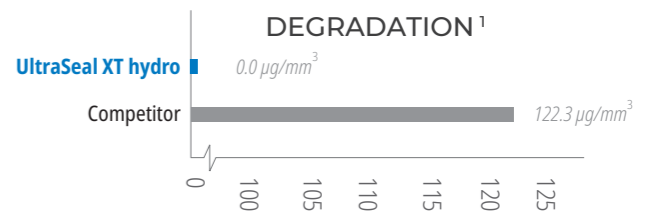
Fluorescing Hydrophilic Pit and Fissure Sealant

- Hydrophilic before it is cured, hydrophobic once cured, and has a self-adhesive quality
- Advanced adhesive technology
- Highly filled resin - 53%
- Thixotropic/ideal viscosity flowability¹
- Fluoresces under black light to ensure sealant is still in place
- Two shades: Opaque White and Natural

UltraSeal XT hydro hydrophilic pit and fissure sealant is a light-cured, radiopaque composite sealant that contains fluoride. It is stronger and more wear resistant because it is a 53%-filled resin and has less polymerization shrinkage than competitive products¹. Used with the InspiralTM Brush Tip, the thixotropic nature of UltraSeal XT hydro sealant causes itself to thin as it's expressed from the tip—allowing it to penetrate deep into the pits and fissures. When the resin stops flowing the shear thinning ceases and placement is complete¹—preventing it from running before it can be light cured. The advanced hydrophilic chemistry works when all visible moisture has been removed. UltraSeal XT hydro sealant is more forgiving of moisture deep inside pits and fissures.



Balanced water absorption allows forgiveness in moist environments without degradation.



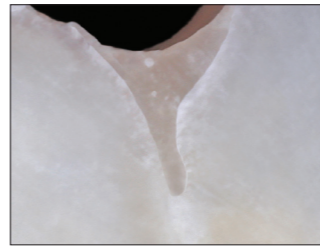
No degradation as a result of balanced water absorption.

MARGINAL RETENTION AND MICROLEAKAGE

UltraSeal XT hydro Sealant

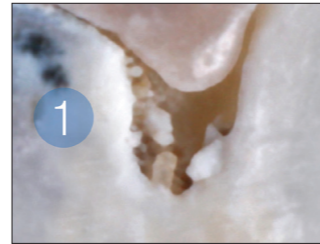


No microleakage.

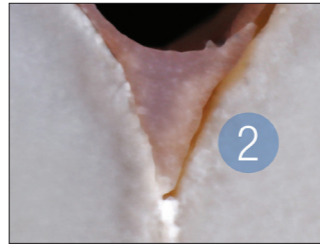


Sealed margins.

Competitor Hydrophilic Sealant



Microleakage.

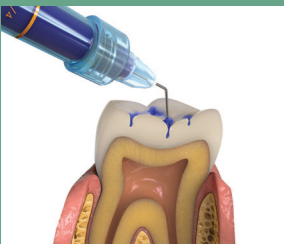


Peeling from margins.

	ULTRASEAL XT PLUS	ULTRASEAL XT HYDRO
Highly Filled Resin	+ (58% filled)	💧 (53% filled)
Fluoride Releasing	+	💧
BPA Free Formula	+	💧
Radiopaque	+	💧
Thixotropic	+	💧
Hydrophobic	+	—
Hydrophilic	—	💧
Fluorescence	—	💧

1. Data on file. Tested to internal procedures. 2. Alirezai M, Bagherian A, Sarraf Shirazi A. Glass ionomer cements as fissure sealing materials: yes or no? A systematic review and meta-analysis. J Am Dent Assoc. 2018;149(7):640-649.e9. doi:10.1016/j.adaj.2018.02.001.

FIVE SIMPLE STEPS



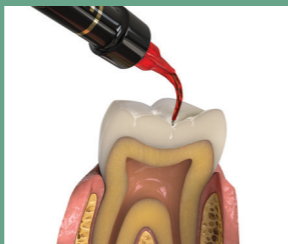
1. Etch for 30 seconds on uncut enamel, 15 seconds on cut enamel. Rinse.



2. Remove visible moisture. PrimaDryTM drying agent will desiccate.



3. Apply PrimaDry agent for 5 seconds with Black MicroTM FXTM tip, then air dry.



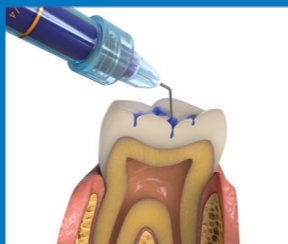
4. Place UltraSeal XT plus sealant.



5. Cure for 3 seconds with VALOTM curing light on Xtra Power mode or 10 seconds on Standard Power mode.

See IFU for complete instructions for use.

FOUR SIMPLE STEPS



1. Etch for 30 seconds on uncut enamel, 15 seconds on cut enamel. Rinse.



2. Remove visible moisture.



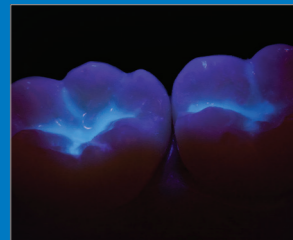
3. Place UltraSeal XT hydro sealant.



4. Cure for 3 seconds with VALOTM LED curing light on Xtra Power mode or 10 seconds on Standard Power mode.

See IFU for complete instructions for use.

FLUORESCENCE



UltraSeal XT hydro sealant has added fluorescent properties, so you can check retention at every appointment.