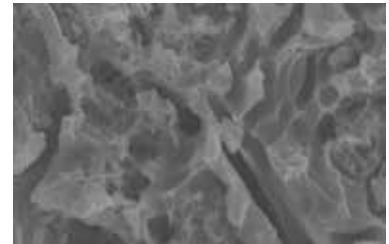


The Strength is in the *Preparation*



Porcelain surface before being etched



After a 90-second application of Porcelain Etch and 5-second cleaning with phosphoric acid

Ultradent® Porcelain Etch, a buffered, 9% hydrofluoric acid, produces an optimal surface texture on silica-based ceramics after a 90-second application. Once rinsed and followed by a 60-second application of Ultradent® Silane, the highest porcelain-to-resin bond strengths can be achieved.

- Easy to control and place
- Will not stain composite or resin cement
- Yields highest porcelain-to-resin bond strengths¹

1. Pameijer CH, Louw NP, Fischer D. Repairing fractured porcelain: how surface preparation affects shear force resistance. *J Amer Dent Assoc.* 1996; 127(2):203-9



Porcelain Etch & Silane

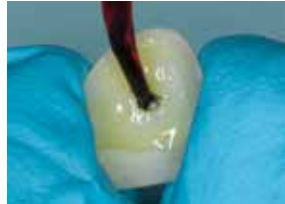
Ultradent Porcelain Etch is a buffered, 9% hydrofluoric acid and is ideal for intraoral and extraoral porcelain etching. It offers high visibility and is viscous enough to stay where it's placed.



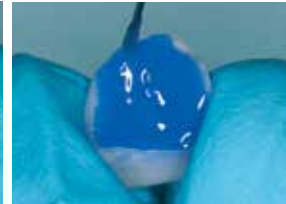
For the best bond strengths, follow porcelain etching with an application of Ultradent Silane, a single-component coupling agent.

- Syringe/tip delivery eases placement
- 90-second etch, 60-second silane
- High porcelain-to-resin bond strengths
- Predictable, stain-free chemistries
- Stable formulation with long shelf life

For best results, use Porcelain Etch with the Inspiral® Brush tip and Silane with the Black Mini® Brush tip.



Etch clean bonding surface with Porcelain Etch for 90 seconds, rinse, and dry



CLINICAL TIP: Apply phosphoric acid (Ultra-Etch® etchant) for five seconds to remove porcelain salts and debris formed by hydrofluoric acid etching



Apply a puddle coat of Silane to the inside surface of the prosthesis for 60 seconds, dry, and set aside. Do not rinse.

405 Porcelain Etch Kit

- 2 x 1.2 ml Porcelain Etch syringes
- 2 x 1.2 ml Silane syringes
- 20 x Black Mini Brush tips
- 20 x Inspiral Brush tips



406 Porcelain Etch 2pk

- 2 x 1.2 ml syringes



410 Silane 2pk

- 2 x 1.2 ml syringes



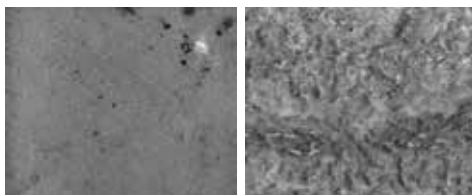
1108 Ultradent Porcelain Repair Kit

- 1 x 1.2 ml PermaFlo Dentin Opaquer syringe
- 1 x 1.2 ml EtchArrest syringe
- 1 x 1.2 ml OpalDam syringe
- 1 x 1.2 ml Peak Universal Bond Syringe
- 1 x 1.2 ml Porcelain Etch syringe
- 1 x 1.2 ml Ultradent Silane syringe
- 20 x Black Mini Brush tips
- 20 x Black Micro tips
- 20 x Micro 20 ga tips
- 20 x Inspiral Brush tips



The repair of a fractured porcelain veneer begins with Porcelain Etch. (Photo courtesy of Shannon Pace, CDA, CDD)

Ultradent Porcelain Etch and Silane may also be used on lithium disilicate (IPS e.max®*) restorations



Lithium disilicate surface before being etched

After 90-second application of Porcelain Etch

Product	Instructed Etching Time	Coupling Agent	Shear Bond Strength
Ultradent Porcelain Etch (9% hydrofluoric acid)	90 seconds	Silane 60 Seconds	44.30 MPa ²
IPS Ceramic Etching Gel (5% hydrofluoric acid)	20 seconds	Monobond®* Plus 60 seconds	28.63 MPa ²

2. Data on File
*Registered trademark of a company other than Ultradent

800.552.5512 ULTRADENT.COM

© 2019 Ultradent Products, Inc. All rights reserved.
68303.11 100918

ULTRADENT PRODUCTS, INC.

Improving Oral Health Globally