

Endodontic Tips

SIMPLIFYING
ENDODONTICS



Ultradent™ Luer Vacuum Adapter



Slide Ultradent's Luer Vacuum Adapter onto any chairside HVE unit to efficiently remove irrigants and debris. Compatible with any luer tip, the Luer Vacuum Adapter saves time and minimizes the use of paper points. It can be used with Capillary tips, which have tapered, flexible cannulae that reach deep into canals for enhanced cleaning and drying.

- A great time saver for any practice
- Dries canals quickly and efficiently
- Minimizes paper point use

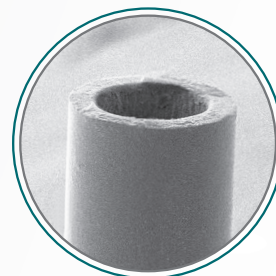


230 - Luer Vacuum Adapters 10pk

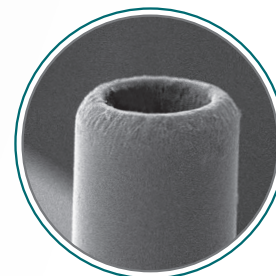
Endodontic Tips DESIGNED TO DELIVER



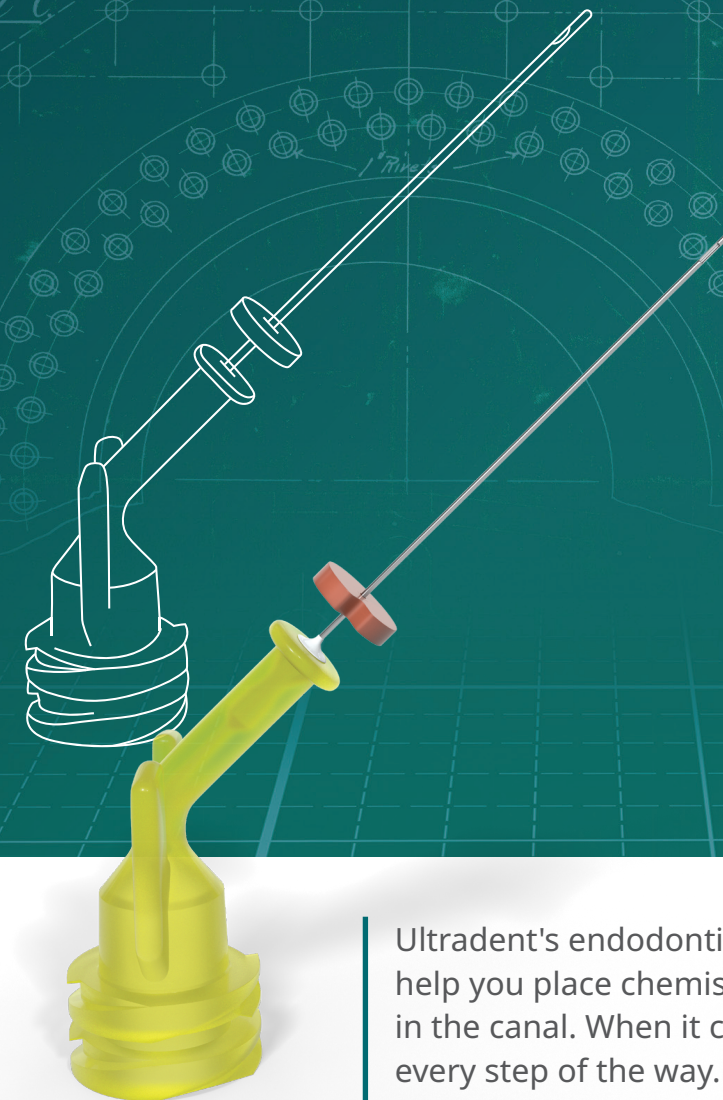
**FLEX TIP
TECHNOLOGY**
Treated for Flexibility



Regular tip



NaviTip rounded tip



Ultradent's endodontic tips are specifically designed to help you place chemistries exactly where you need them in the canal. When it comes to RCTs, we are with you every step of the way.



SCAN
TO VIEW
PRICING



Endodontic Tips

- WARNING:
- Use recommended endodontic tip
 - Make sure rubber stopper is in position
 - Take extra precaution when not using sideport tips
 - Make sure tip is not wedged in the canal



Capillary Tips

- Evacuates canals and substantially minimizes use of paper points
- Narrow, flexible taper accesses curved canals
- Great for dental abscess procedures

Attach to the Ultradent™ Luer Vacuum Adapter for moisture removal from endodontic canals. **Capillary tips should never be used to deliver irrigating materials or endodontic chemistries.**

LOK-TITE™	Tip length	20pk	50pk
0.014" Capillary	0.36 mm	341	3099
0.019" Capillary	0.48 mm	186	1425

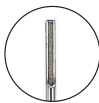


Micro Capillary Tips

- Bright color is easily identified against soft tissues
- The world's smallest molded tips

Designed for: periodontal materials and the Ultradent™ Luer Vacuum Adapter.

LOK-TITE™	Tip length	20pk	100pk
0.008" Micro Capillary	5 mm	1120	1802
0.008" Micro Capillary	10 mm	1121	—



Endo-Eze™ Irrigator Tip

- Provides ideal reach reducing risk of expressing chemicals past the apex
- Comes with a flexible, blunt cannula with a unique, anti-obturating end
- Non-sterile

Designed for: Ultradent™ 5 ml syringe.

	Tip length	20pk
27 ga (0.40 mm) Endo-Eze Irrigator	25 mm	207



22 ga 20 ga 19 ga 18 ga

Endo-Eze™ Tips

- Great for endodontic procedures such as post cementation and core buildsups
- Flexible, strong cannulae
- Bend easily
- Length 19 mm

Designed for: Luting materials and air/water delivery. Use with: TriAway™ Adapter, PermaFlo™ DC (20 ga), and other Ultradent syringes.

	Bendable tip	20pk	100pk
22 ga - 0.028" Endo-Eze	0.70 mm	348	1431
20 ga - 0.035" Endo-Eze	0.90 mm	347	1430
19 ga - 0.042" Endo-Eze	1.06 mm	346	1429
18 ga - 0.049" Endo-Eze	1.25 mm	345	1428

Endodontic Tips

- WARNING:
- Use recommended endodontic tip
 - Make sure rubber stopper is in position
 - Take extra precaution when not using sideport tips
 - Make sure tip is not wedged in the canal



NaviTip™ 29 ga Tips

- Provide controlled delivery to the apex
- Flexible, stainless steel cannulae easily navigate curved canals
- Bendable tip 0.33 mm

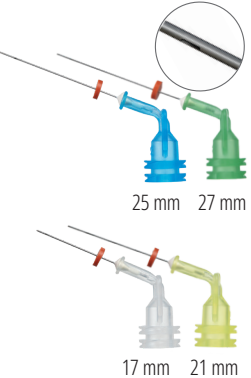
29 ga delivers paste materials: MTAFlow™ and EndoREZ™.



NaviTip™ 30 ga Tips

- Provide controlled delivery to the apex
- Flexible, stainless steel cannulae easily navigate curved canals
- Bendable tip 0.30 mm

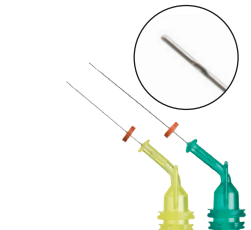
30 ga delivers solutions/gels: File-Eze™, Ultradent™ EDTA 18% Solution, and Consepsis™.



NaviTip™ 29 ga Tips with Single Sideport

- Designed to direct the flow of chemistry through the sideport of the tip before flowing down into the area of the apex, thus reducing the risk of product extrusion
- Flexible, stainless steel cannula easily navigates curved canals
- Bendable tip 0.33 mm

29 ga delivers paste materials: MTAFlow™, EndoREZ™, UltraCal™ XS, and MTApeX Sealer.



NaviTip™ 31 ga Tips with Double Sideport Irrigator

- Double sideports deliver irrigants safely, minimizing the possibility of chemicals being expressed past the apex
- One of the world's smallest cannula navigates the most intricate canal spaces

Designed for: ChlorCid™, ChlorCid™ Surf, Ultradent™ EDTA 18% Solution, and Ultradent™ Citric Acid 20%.



NaviTip™ FX™ 30 ga Tips

- One-of-a-kind brush cleans, scrubs, and irrigates simultaneously
- Rigid cannulae

Designed for: Ultradent™ Citric Acid 20% Solution.

LOK-TITE™	Tip length	20pk	50pk
29 ga - 0.0129" NaviTip	27 mm	5115	1377
29 ga - 0.0129" NaviTip	25 mm	5114	1376
29 ga - 0.0129" NaviTip	21 mm	5113	1374
29 ga - 0.0129" NaviTip	17 mm	5112	1378
29 ga-29 ga NaviTips	27-17 mm	5116	1379

LOK-TITE™	Tip length	20pk	50pk
30 ga - 0.0118" NaviTip	27 mm	1354	1424
30 ga - 0.0118" NaviTip	v25 mm	1250	1423
30 ga - 0.0118" NaviTip	21 mm	1349	1422
30 ga - 0.0118" NaviTip	17 mm	1249	1421
30 ga-30 ga NaviTips	27-17 mm	1351	3319

LOK-TITE™	Tip Length	20pk
29 ga - 0.0129" NaviTip	27 mm	4989
29 ga - 0.0129" NaviTip	25 mm	4990
29 ga - 0.0129" NaviTip	21 mm	4991
29 ga - 0.0129" NaviTip	17 mm	4992
30 ga-30 ga NaviTips	17-27	5143

Note: UltraCal™ XS calcium hydroxide paste should only be used with 29 ga NaviTip Single Sideport tips.

LOK-TITE™	Tip length	20pk	50pk
31 ga - 0.0098" NaviTip	21 mm	5121	5122
31 ga - 0.0098" NaviTip	27 mm	5123	5124

Listed as an "EXCELLENT" product by a prominent independent research institute.¹

LOK-TITE™	Tip length	20pk
30 ga - 0.0118" NaviTip FX	17 mm	1452
30 ga - 0.0118" NaviTip FX	25 mm	1454

¹ Clinical Research Associates Newsletter. Volume 29, Issue 1, January 2005.