

EVERYTHING YOU NEED IN ONE PLACE ≈

The MTAFlow and MTAFlow White repair cement kits come with the essential tools you'll need to mix and deliver the cement. The kit contains enough powder and gel to complete 8–10 applications. It also includes a measuring spoon and the tools you'll need for precise delivery: 10 Skini syringes, 20 Micro Tips (20 ga), and 10 Luer Lock caps.



4980 MTAFlow White Kit
(8 to 10 applications per kit)

- 1 x Technique guide
- 1 x Instructions for use
- 1 x MTAFlow Powder (2 g)
- 1 x MTAFlow Gel (2 ml)
- 1 x Measuring spoon
- 20 x Micro Tips (20 ga)
- 10 x Skini Syringes
- 10 x Luer Lock Caps



3980-US MTAFlow Kit
(8 to 10 applications per kit)

- 1 x Technique guide
- 1 x Instructions for use
- 1 x MTAFlow Powder (2 g)
- 1 x MTAFlow Gel (2 ml)
- 1 x Measuring spoon
- 20 x Micro Tips (20 ga)
- 10 x Skini Syringes
- 10 x Luer Lock Caps



3981-US MTAFlow Repair Cement Refill

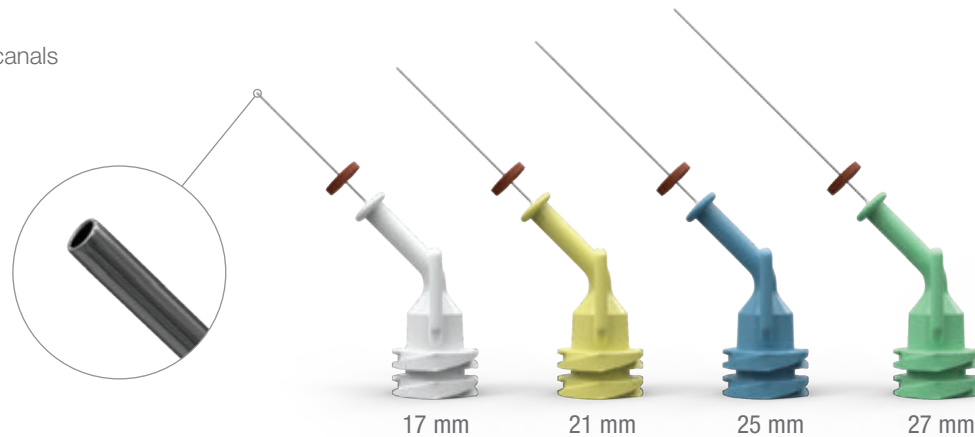
- 1 x Technique guide
- 1 x Instructions for use
- 1 x MTAFlow Powder (2 g)
- 1 x MTAFlow Gel (2 ml)
- 1 x Measuring spoon

ALSO AVAILABLE FROM ULTRADENT ≈

NaviTip™ 29 ga Tips

- Controlled delivery anywhere in the canal
- Flexible cannula easily navigates curved canals

| NaviTip™ Tips | 20pk | 50pk |
|---------------|-------|-------|
| | 29 ga | 29 ga |
| 17 mm, White | 5112 | 1378 |
| 21 mm, Yellow | 5113 | 1374 |
| 25 mm, Blue | 5114 | 1376 |
| 27 mm, Green | 5115 | 1377 |
| Assorted | 5116 | 1379 |



SCAN
TO VIEW
PRICING

ENDOEZE™ MTAFLOW™ WHITE

MINERAL TRIOXIDE AGGREGATE REPAIR CEMENT

WHITE NONSTAINING FORMULA—
SAME PROPERTIES AS THE ORIGINAL MTAFlow REPAIR CEMENT



New MTAFlow™ White repair cement has the same unique properties as the original MTAFlow repair cement: both are designed to mix and deliver easily with your desired consistency.

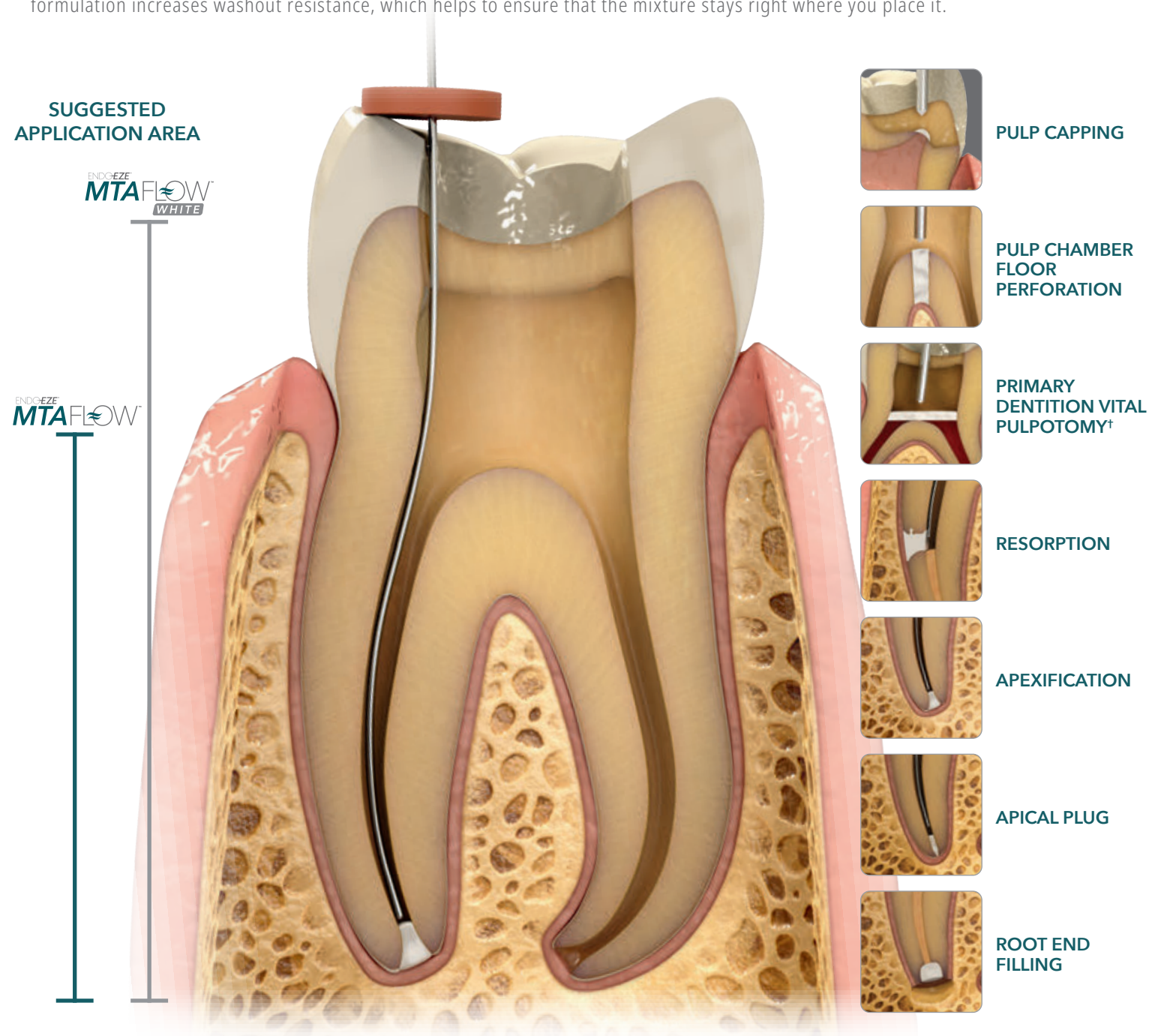
When using the Ultradent NaviTip™ 29 ga tip, you're assured precise placement for apexification, apical plug, and resorption.

TRUSTED FEATURES OF A BIOACTIVE REPAIR CEMENT

NONSTAINING FORMULA ≈

Our MTAFlow White repair cement's nonstaining formula was developed as an option for procedures in the esthetic zone of the tooth—e.g., above the gingival margin.

Both MTAFlow repair cements have a smooth consistency due to the ultrafine-grained powder and proprietary gel medium. The formulation increases washout resistance, which helps to ensure that the mixture stays right where you place it.



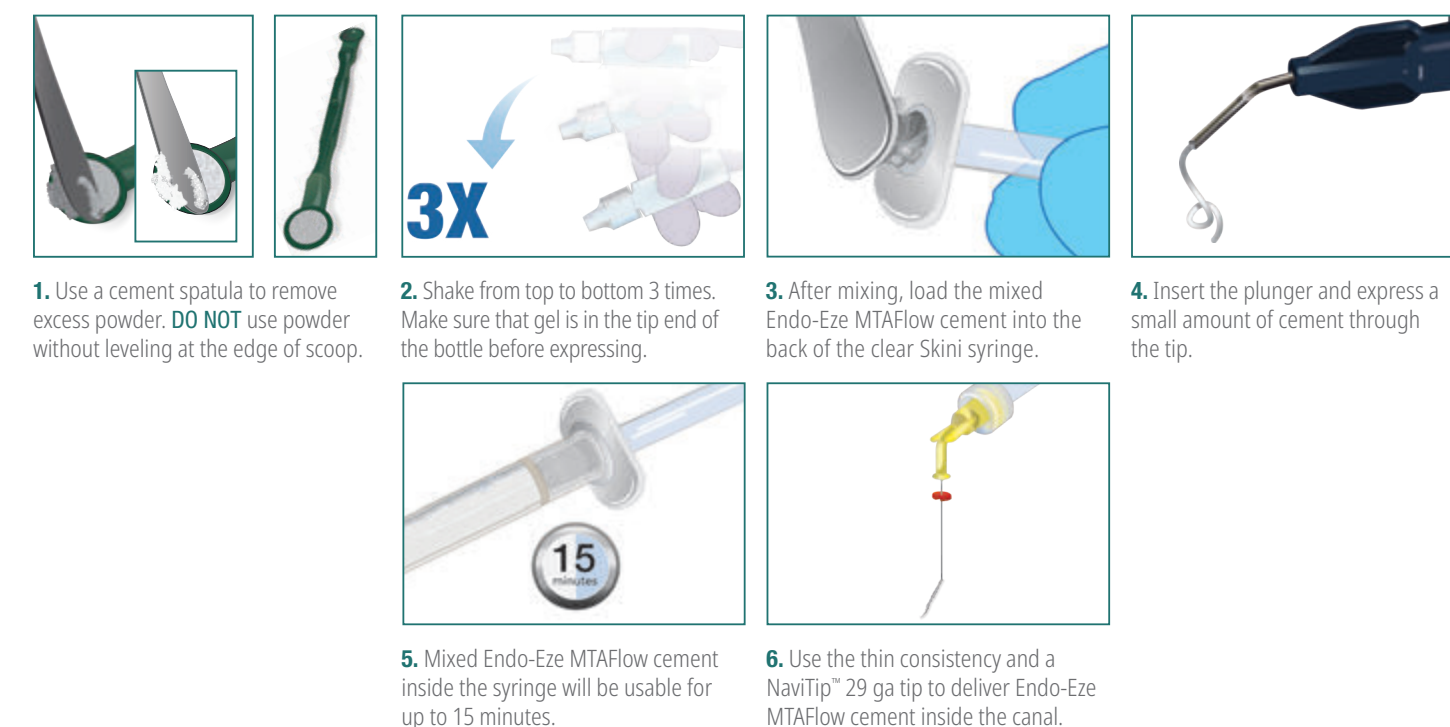
Both MTAFlow repair cements are bioactive. The formation of hydroxyapatite (HA) will cover the surface of the MTAFlow repair cement exposed to body fluids. That layer of HA will no longer look like a foreign material to the living cells. This will support healing.¹

1. Sarkar NK, Caicedo R, Ritwik P, et al. Physicochemical basis of the biologic properties of mineral trioxide aggregate. *J Endod.* 2005;31:97–100.

THE RIGHT CONSISTENCY

FOR THE RIGHT PROCEDURE ≈

The mixing ratio of the powder and gel components of both MTAFlow repair cements are adaptable based on the procedure. MTAFlow White cement's nonstaining formula is specifically designed to be used for procedures like primary dentition vital pulpotomy[†] and pulp capping. It can, however, be used for any procedure appropriate for MTAFlow repair cement.



Use a thick consistency for pulp capping, pulp chamber floor perforation, and primary dentition vital pulpotomy[†]; a thin consistency for resorption, apexification, and apical plug; or a putty consistency for root end filling.

You can be sure that both MTAFlow repair cements will be effective, non-gritty, and easy to deliver accurately. Plus, the MTAFlow White repair cement is nonstaining!

MIXING PROPORTION SUGGESTIONS (POWDER AND GEL):*

| APPLICATIONS | PULP CAPPING, PULP CHAMBER PERFORATION, PRIMARY DENTITION VITAL PULPOTOMY† | RESORPTION, APEXIFICATION, APICAL PLUG | ROOT END FILLING |
|--------------------------|----------------------------------------------------------------------------|----------------------------------------|-------------------------------------|
| POWDER (MEASURING SPOON) | 2 big ends (0.26 g) | 1 big end plus 1 small end (0.19 g) | 1 big end plus 1 small end (0.19 g) |
| GEL DROPS | 3 drops | 3 drops | 1 drop** |
| CONSISTENCY | Thick | Thin | Putty |
| DELIVERY TIP | Micro™ Tip (20 ga) | NaviTip™ Tip (29 ga) | Non-syringe delivery |

* More powder or gel can be added to achieve desired consistency.

** Depends on the desired consistency.

† Warning: MTA has limited antimicrobial properties. When MTAFlow repair cement is used in primary dentition vital pulpotomy, use only sterile water during the procedure.