

**Thermo Clone<sup>TM</sup> VPS**



Ask about our mix and match or bulk discount pricing!

**Super Light Body**  
4060 Fast Set

2 x 50 ml cartridges  
12 x Mixing/IntraOral tips



**Light Body**  
4057 Regular Set  
4065 Fast Set

2 x 50 ml cartridges  
12 x Mixing/IntraOral tips

**Light Body**  
4076 Fast Set Econo Pack

10 x 50 ml cartridges  
48 x Mixing/IntraOral tips



**Medium Body**  
4058 Regular Set  
4066 Fast Set

2 x 50 ml cartridges  
6 x Mixing tips



**Heavy Body**  
4059 Regular Set  
4067 Fast Set

2 x 50 ml cartridges  
6 x Mixing tips

**Heavy Body**  
4077 Fast Set Econo Pack

10 x 50 ml cartridges  
36 x Mixing tips



4073 Thermo Clone<sup>TM</sup> VPS Putty

1 x ea. 250 g base and 250 g catalyst  
2 x Scoops



**Medium Body**  
4068 Regular Set  
4070 Fast Set

1 x 380 ml cartridge  
10 x Dynamic Mixing tips



**Heavy Body**  
4069 Regular Set  
4071 Fast Set

1 x 380 ml cartridge  
10 x Dynamic Mixing tips



**Thermo Clone<sup>®</sup> Bite Registration**

Bite Registration

4072 Fast Set

2 x 50 ml cartridges  
12 x Mixing tips



BITE REGISTRATION

**Thermo Clone<sup>®</sup> VPS Accessories**

4074 Tray Adhesive 10 ml Bottle



Mixing Tips – Refill  
2902 - Yellow 50pk  
2904 - Green 50pk



4075 Dynamic Mixing Tips 50pk



**MAKE THE  
RIGHT  
FIRST  
IMPRESSION**



**THERMO<sup>®</sup>  
CLONE<sup>TM</sup> VPS**



# DESIGNED TO CAPTURE EVERY DETAIL

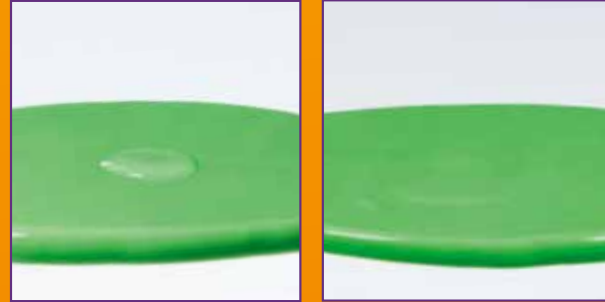
Thermo Clone impression material is designed to capture even the finest features quickly and accurately. The results? Clear impressions with detailed margins—the first time.

And because the temperature-sensitive material sets quickly, you'll see less distortion in your impressions and more smiles on your patients' faces.

## HYDROPHILIC

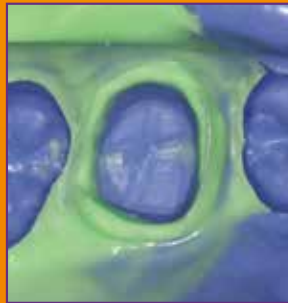
Hydrophilicity ensures precision in your impressions by displacing moisture so the material can reach every part of every tooth.

With a contact angle of 40 degrees, Thermo Clone material is among the industry leaders in hydrophilicity.



## THIXOTROPIC

Thixotropic materials become more fluid as they are agitated—like when they are applied to a crown preparation—and thicken when they are in place. This means that when Thermo Clone material is placed, the material flows into the sulcus and the spaces between teeth. This ensures a detailed impression and clear margins.



## EASY TO DELIVER

Thermo Clone impression material is available in 50 ml cartridges or 380 ml jumbo cartridges that fit most automatic mixing machines.

With an automatic mixing machine and the easy-to-use dynamic mixing tip, prepping to fill a tray is easy!



1. Remove cap

2. Attach Dynamic Mixing tip

3. Load into automatic mixing machine

SET TIMES	SET SPEED	WORKING TIME	SET TIME	TOTAL TIME
SUPER LIGHT BODY	FAST	1:00 min	1:15 mins	2:15 mins
LIGHT BODY	REGULAR	2:15 mins	2:15 mins	4:30 mins
	FAST	1:00 min	1:15 mins	2:15 mins
MEDIUM BODY	REGULAR	2:15 mins	2:30 mins	4:45 mins
	FAST	1:00 min	2:15 mins	3:15 mins
HEAVY BODY	REGULAR	2:15 mins	2:30 mins	4:45 mins
	FAST	1:00 min	2:15 mins	3:15 mins
PUTTY	FAST	2:00 min	2:00 mins	4:00 mins
BITE REGISTRATION	FAST	0:15 min	0:55 mins	1:10 mins

### Try it for yourself!

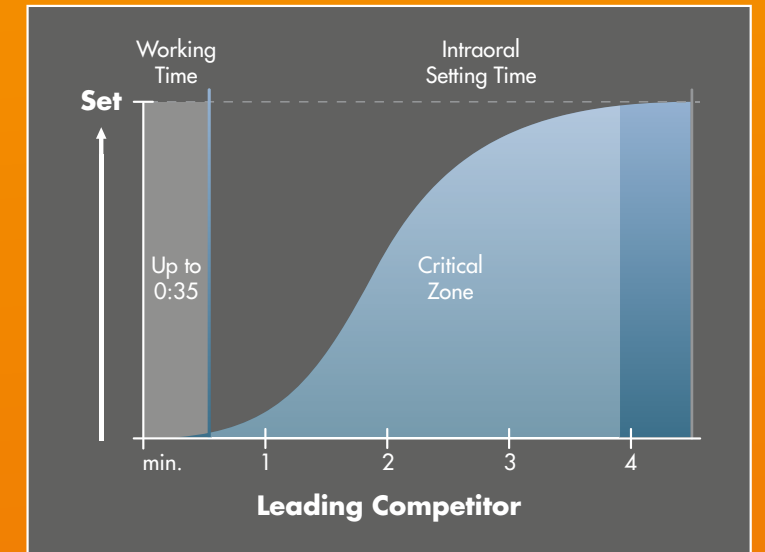
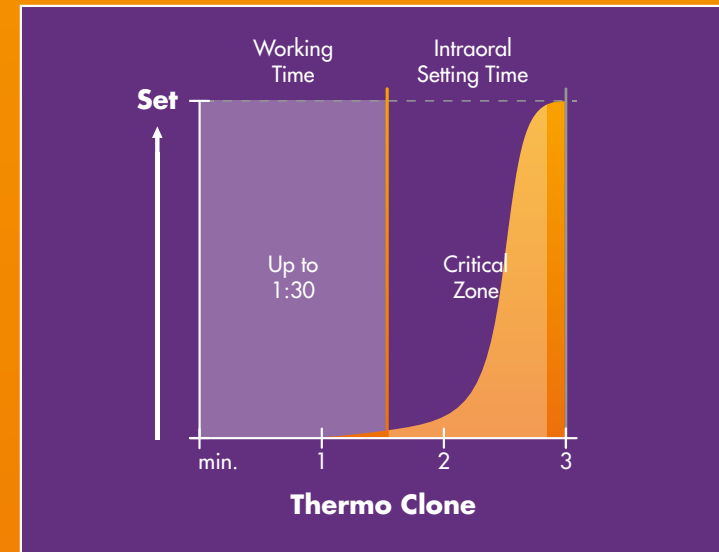
Apply Thermo Clone Light material to this square. When the material sets, lift it off the page to see the detailed impression.



# READY, SET, GO

Thermo Clone impression material is temperature sensitive. This means that as the temperature of the material increases, the setting time decreases. We call this Thermal-Accelerated Set.

At room temperature, Thermo Clone material stays malleable, with a working time of up to 1:30. Once the tray is placed in the patient's mouth, the material rapidly begins to set due to the increased temperature. This accelerated setting time means there's less chance of distortion. See below for a comparison of setting times for Thermo Clone material versus a leading competitor. Both tests were conducted on heavy body fast set materials. The materials were placed into an environment that simulated a patient's mouth and were continually tested to determine the setting stage.



Note: The Critical Zone denotes the time between when the material starts to set intraorally and when it is completely set. This is when distortions most often occur, resulting in extra lab work, poorly fitting restorations, and costly retakes.

- Thermo Clone material has a working time of up to 1:30. There is no minimum working time; Thermal-Accelerated Set ensures that the material begins to set as soon as it is placed in the patients' mouth.
  - Thermo Clone material is out of the critical zone in 80 seconds.
  - In this data set, Thermo Clone material was fully set 90 seconds after being placed in the simulated mouth.\*
- The competitor's material has a maximum and minimum working time of 35 seconds. The material begins to set at the same time regardless of when it is placed in the mouth.
  - The material stays in the Critical Zone for 3:30.
  - In this data set, the material was completely set 3:55 after being placed in the simulated mouth.

\*Please refer to the Instructions for Use for recommended intraoral time.

The results: Thermal-Accelerated Set gives you a long working time, a short setting time, and minimal time in the critical zone.



**THERMO**  
**CLONE**™ VPS