

EndoREZ™

sealer

A Decade of Success

Turns Marketing Claims into Facts

The world's first syringe-delivered, self-priming canal sealer, EndoREZ sealer minimizes the amount of chair time required for obturation.

This thixotropic material has an affinity for moisture deep in dentinal tubules and lateral canals,² providing the most complete seal available.

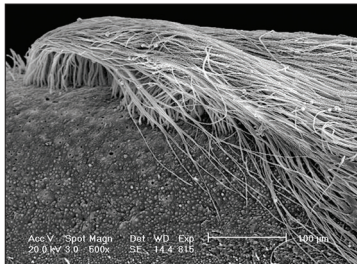
- The world's first hydrophilic and self-priming resin sealer
- More effective obturation in less time
- Provides a complete, thorough seal³
- Has the same radiopacity as gutta percha
- Bonds to resin-based core/composite materials
- Retreatable when combined with gutta percha⁴
- Provides syringe delivery to the apical third

Don't change your technique. Make it faster with EndoREZ canal sealer.

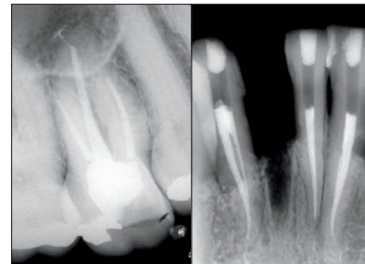
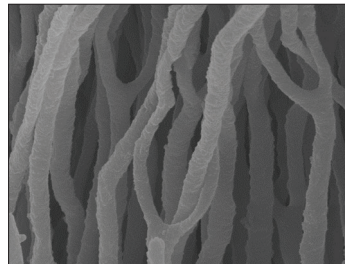
EndoREZ Sealer Facts

When EndoREZ sealer is used conventionally, it will be completely set in 30 minutes. When used with EndoREZ™ Accelerator, the set time is reduced to just 5 minutes. Compare this to the approximate 10-hour set time other sealers may require, and it's clear: EndoREZ sealer makes every RCT faster.

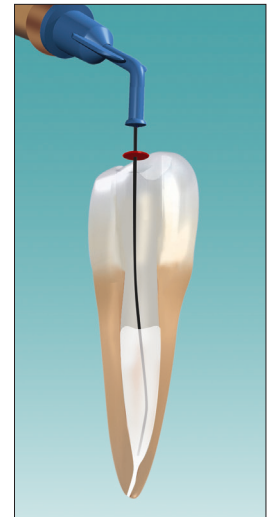
EndoREZ sealer contains a special hydrophilic organophosphate methacrylate monomer that increases its hydrophilicity, which produces resin penetration of up to 1200 µm into the tubules.



EndoREZ sealer penetrates deep into the tubules. Because it contains nanoparticles, it adapts to the walls like no other sealer on the market.



EndoREZ canal sealer results in predictable fills that are radiopaque, easily diagnosed, and suitable for retreatment and post-and-core procedures.



NaviTip™ tips deliver any irrigant just short of the apex—right where you need it.

1. realityesthetics.com. 2. Zmener O, Pameijer CH, Serrano SA, Vidueira M, Macchi RL. Significance of moist root canal dentin with the use of methacrylate-based endodontic sealers: an in vitro coronal dye leakage study. *J Endod.* 2008;34(1):76-9. 3. Zmener O, Pameijer CH. Clinical and radiographic evaluation of a resin-based root canal sealer: an eight-year update. *J Endod.* 2010;36(8):1311-4. 4. Zmener O, Banegas G, Pameijer C. Efficacy of an automated instrumentation technique in removing resin-based, zinc oxide and eugenol endodontic sealers when retreating root canal: an in vitro study. *Endod Pract.* 2005;8:29-33.

EndoREZ™ Kit



5900 - EndoREZ Syringe Kit
1 x 5 ml syringe
20 x Mixing tips

EndoREZ™ Obturation Kits



5901 - EndoREZ Obturation .02 Taper Kit
5902 - EndoREZ Obturation .04 Taper Kit
5903 - EndoREZ Obturation .06 Taper Kit
1 x 5 ml syringe
20 x Skini syringes
20 x Mixing tips
20 x 29 ga Variety NaviTip tips
120 x EndoREZ Points



SCAN
TO VIEW
PRICING

