

## DR. JOSÉ CARLOS GARÓFALO



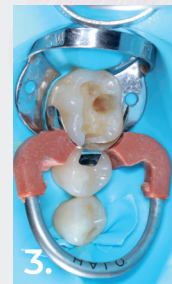
Dr. Garófalo is a specialist in restorative and esthetic dentistry and has a master's of science in dentistry from the University of São Paulo FOU SP. He is the former Director of the Department of Dentistry of the School of Professional Development of the São Paulo Association of Dental Surgeons, and Dr. Garófalo has also lectured as a professor at International Congresses and Symposiums in Brazil and Latin America. Previously the Scientific Editor of the Revista Estética-APCD of São Paulo, he has also written articles, co-authored books, and contributed chapters in publications such as: *Laminated Veneers*, *Inlays-Onlays*, *Atlas of Laminated Veneers*, and *Dental Sculpture Using the Geometric Method*.



1. Previous restoration failed and fell out of patient's mouth.



2. Tooth is isolated using a rubber dam, tooth is prepared, Halo™ sectional matrix band is placed, and Halo™ disposable anatomical large wedge is placed.



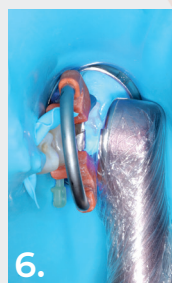
3. Halo™ universal matrix ring is placed.



4. Ultra-Etch™ 35% phosphoric acid etchant is used with a selective etch technique for 15 seconds on cut enamel. Peak™ SE Primer is used to etch dentin for 20 seconds.



5. Application of universal adhesive.



6. Adhesive is cured for 10 seconds with VALO™ Grand curing light.



7. Tooth is restored in 2 mm layers using Transcend™ composite Universal Body shade.



8. Before removal of rubber dam, finishing and polishing completed with Jiffy™ points and Jiffy™ Natural composite polishers.



9. Final results after polishing.

