



ASTERAND[®] Human Tissue Specimens



**Your Trusted Provider for Reliable
and Ethical Tissue Solutions**

So Much is Riding on Your Research

At BioIVT, we understand that how a specimen is collected impacts its downstream use. That's why for over 20 years, we have used the same high standards to prospectively collect biospecimens for our ASTERAND® Human Tissue Repository. Today, this repository contains over 300,000 high-quality, thoroughly characterized and validated tissues with associated biofluids, all intended for research use in drug development and companion diagnostic processes.



Collection Standards

- Protocols for every collection
- Site personnel vetted and trained
- Collection sites audited yearly



Rigorous Quality Control

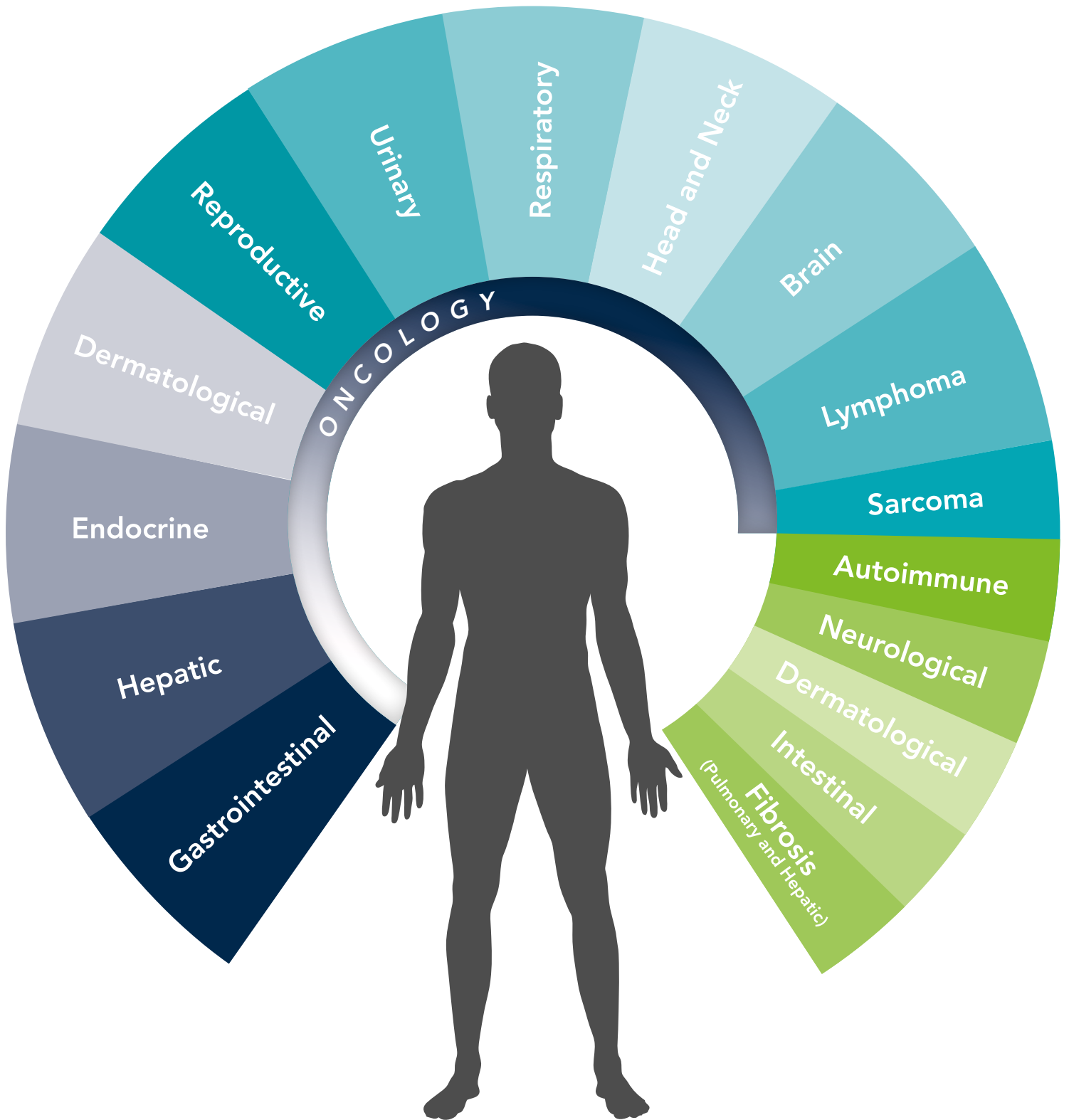
- Board-certified pathology review
- Clinical data review of over 200 data points
- Ethical and regulatory traceability for each case
- Full slide histological Aperio image available for review prior to selection

Ethics Matter

At BioIVT, all human tissue samples are collected under IRB-approved protocols and are de-identified prior to banking and distribution. BioIVT complies with the US Health Insurance Portability and Accountability Act (HIPAA), the United Kingdom Human Tissue Authority (HTA) and is accredited by the College of American Pathologists (CAP).



We offer a wide breadth of indications, including large oncology cohorts with matched specimens, other disease cohorts and normal control cohorts.



Over 200 clinical sites available to meet your research needs.

Tissue Solutions to Fit into Your Research Workflow

Focus on Quality

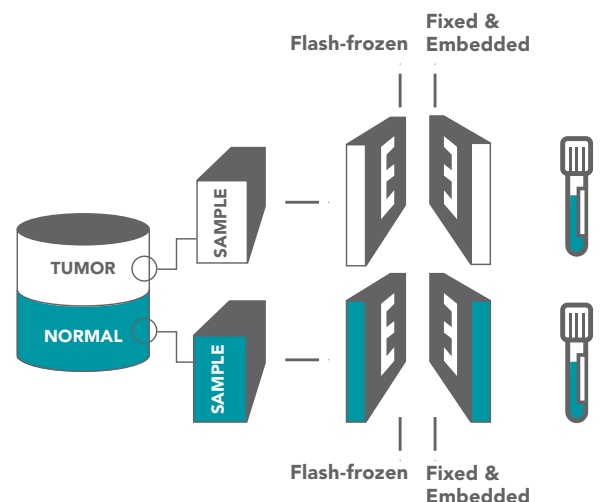
All tissues and biofluids from our ASTERAND® Elite Human Tissue Repository are paired with comprehensive clinical data, collected from each donor site, following a strict and standardized electronic record review process. Board-certified clinical pathologists independently review every tissue specimen.

Features

- Pathological data is classified using ICD codes as appropriate for anatomic site, morphology and behavior with WHO Oncology Classifications for tumor indications
- Data complies with WHO Oncology Classifications for tumor indications
- Clinical data is pathologist confirmed for completeness and consistency
- All tissue specimens are provided with up to 200 clinical data points and histological information per case
 - % tumor
 - % necrosis
 - % normal
 - % other
- Quality analysis includes RIN for fresh frozen specimens
- We offer biomarker analysis on specific cohorts and the ability to screen as a custom project: ER/PR/HER2, EGFR, KRAS, BRAF, MSI, NGS Tumor Panels, Fusions, CNVs, HLA and more

ASTERAND Elite Human Tissues are preserved in various formats to meet the needs of current biomedical research.

The standard collection process includes diseased tissue and adjacent normal tissue from a single donor, preserved in flash-frozen or formalin-fixed, paraffin-embedded (FFPE) formats. Matched FFPE and flash-frozen pairs are also available. Serum, plasma, double spun plasma and blood is often collected from the same donor who provided the tissue specimen. PBMCs, dissociated tumor cells, primary associated fibroblasts and epithelial cells are also available.





ASTERAND® ACCREDITED HUMAN TISSUE

An abbreviated solution with the same quality guarantee

	ASTERAND Accredited Human Tissue	ASTERAND Elite Human Tissue
Board-certified pathology review to confirm specimen diagnosis	✓	✓
Link to high-resolution, whole slide images of specimens using Leica Biosystems' Aperio System	✓	✓
Ethically procured - Links to regulatory documentation included	✓	✓
Associated socio-demographic data set	Donor age, gender, race	Donor age, gender, race, ethnicity, smoking history, alcohol history, female reproductive history, and more
Associated clinical data set	Resection organ, year of resection	Comprehensive, >200 data point inclusive of clinical donor diagnosis, co-morbidities, treatments (current and past), medications, ajcc/uicc stage and group, independently reviewed by BioIVT, cause of death (if available)
Associated specimen data set	Percent tumor between 25-95% guaranteed	Comprehensive, including tumor grade, percent tumor, necrosis, normal and other; ischemic time, specimen size/weight
Associated outcomes data	NA	Available for some cohorts, inquire for more information
Lowest user failure rate	<1%	<1%
Tissue formats available	FFPE only	FFPE, fresh frozen, matched biofluids

ASTERAND[®] Human

Provide You with t

Define Your Need

Meet with our business development/tissue specialists

Cohort: Diagnosis, tissue of origin, format

Demographic: Age range, gender, race/ethnicity, smoking hx, alcohol hx.

Clinical Donor: Stage/severity, grade, previous treatment, medications

Biospecimen: Percent cell population, size/volume, age of specimen

Other Requirements: Special processing, mutation screening, genotyping

Tailor Our Best Solution

Trained search engineers compile available inventory

- Board-certified confirmation of diagnosis for desired cohort; available alternative solutions
- Clinical data independently reviewed; over 200 points of data
- Stage independently verified; grade provided by BioIVT pathologists
- Quality controlled
- Service project brief created (if required)

Need

Our Disease State Specialists are here to work with you through
to selecting cohorts, cus

n Tissue Specimens the Data You Need



Select Your Solution

Detailed output with available inventory provided for sample selection

- Select the best samples for your research needs, or have us select samples that best fit your requirements
- Not enough samples? Incoming quarterly orders and custom solutions provide additional sources

Solution Delivered

Specimens shipped fit-for-purpose

- Final pre-ship QC
- Clinical data provided
- Derivatives required
- Special data included

help?

h the entire process from defining your specimen requirements
tom solutions and more!

Do you have specimens with specific mutation markers?

What is the regulatory approval status of these samples?

Can you match tissue to biofluids?

Do you have double spun plasma with your tissue?

What if I need my samples processed to my specifications?

Can you help me select the right specimens?

About BioIVT

BioIVT, formerly BioreclamationIVT, is a leading global provider of high-quality biological specimens and value-added services. We specialize in control and disease state samples, including human and animal tissues, cell products, blood and other biofluids. Our unmatched portfolio of clinical specimens directly supports precision medicine research and the effort to improve patient outcomes by coupling comprehensive clinical data with donor samples. And as the world's premier supplier of ADME-Tox model systems, including hepatocytes and subcellular fractions, BioIVT enables scientists to better understand the pharmacokinetics and drug metabolism of newly discovered compounds and the effects on disease processes. By combining our technical expertise, exceptional customer service and unparalleled access to biological specimens, BioIVT serves the research community as a trusted partner in ELEVATING SCIENCE®.



For Inquiries:

North America & Asia Pacific

T +1 516 483 1196 F +1 516 483 4683

E customerservice@bioivt.com

Europe, Middle East & Africa

T +44 (0) 1444 707333 F +44 (0) 1444 250066

E cseurope@bioivt.com

BioIVT.com