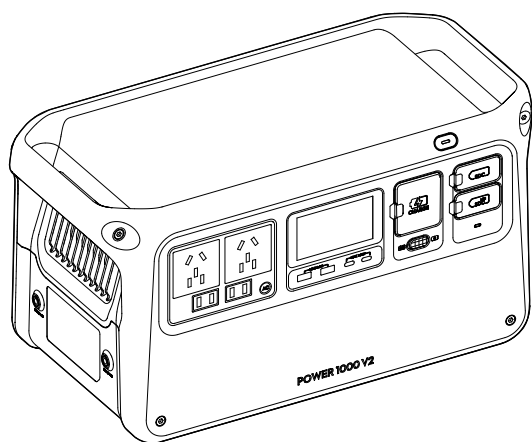


dji POWER 1000 V2

User Manual

v1.0 2025.05





This document is copyrighted by DJI with all rights reserved. Unless otherwise authorized by DJI, you are not eligible to use or allow others to use the document or any part of the document by reproducing, transferring or selling the document. Only refer to this document and the content thereof as instructions to operate DJI products. The document should not be used for other purposes.

In the event of divergence among different versions, the English version shall prevail.

Searching for Keywords

Search for keywords such as “battery” and “install” to find a topic. If you are using Adobe Acrobat Reader to read this document, press Ctrl+F on Windows or Command+F on Mac to begin a search.

Navigating to a Topic

View a complete list of topics in the table of contents. Click on a topic to navigate to that section.

Printing this Document

This document supports high resolution printing.

Using this Manual

Legend

△ Important

💡 Hints and Tips

📖 Reference

Read Before Use

DJI™ provides you with tutorial videos and the following documents:

1. *Safety Guidelines*
2. *Quick Start Guide*
3. *User Manual*

It is recommended to watch all the tutorial videos and read the *Safety Guidelines* before using for the first time. Make sure to review the *Quick Start Guide* before using for the first time and refer to this *User Manual* for more information.

Video Tutorials

Go to the address below or scan the QR code to watch the tutorial videos, which demonstrate how to use the product safely:



<https://www.dji.com/power-1000-v2/video>

Download DJI Assistant 2

Download DJI ASSISTANT™ 2 (Power Series) at:

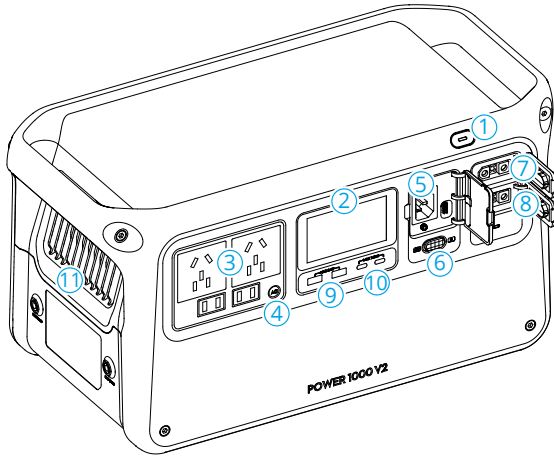
<https://www.dji.com/downloads/softwares/dji-assistant-2-power-series>

Contents

Using this Manual	3
Legend	3
Read Before Use	3
Video Tutorials	3
Download DJI Assistant 2	3
1 Product Profile	5
1.1 DJI Power 1000 V2	5
1.2 Display Screen	6
2 Basic Usage	8
2.1 Powering on/off	8
2.2 Connecting to the DJI Home App	8
2.3 AC Recharging	8
2.4 AC Output	10
2.5 USB Output	10
3 Accessories	12
3.1 SDC Output	12
3.2 Expansion capacity	13
3.3 Car Scenario	14
3.4 Solar Power Scenario	14
3.5 Solar Power + RV Scenario	16
4 Uninterruptible Power Supply (UPS)	17
5 Appendix	18
5.1 Specifications	18
5.2 Compatibility	18
5.3 Firmware Update	18
Using DJI Home App	18
Using DJI Assistant 2 (Power Series)	18
5.4 Log Export	19
5.5 Maintenance	20
5.6 Disposal	20

1 Product Profile

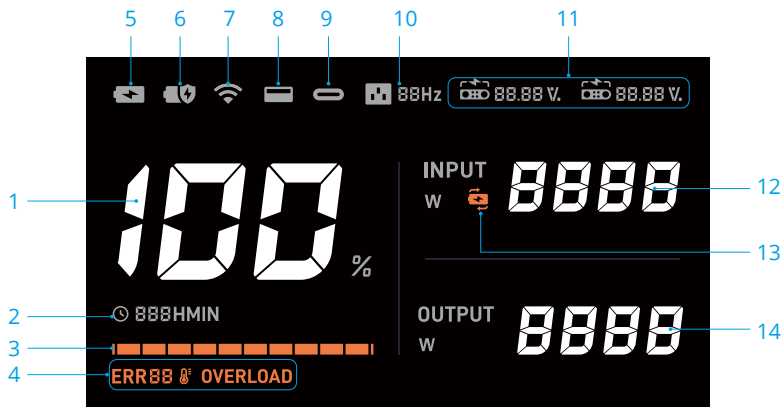
1.1 DJI Power 1000 V2



1. Power Button
2. Display Screen
3. AC Output Ports ^[1]
4. AC Button
5. AC Input Port
6. Recharge Mode Switch
7. SDC Port
8. SDC Lite Port
9. USB-A Port
10. USB-C Port
11. Vents

[1] The illustrations in the user manual may differ from the actual product, depending on the country or region. Please refer to the actual product.

1.2 Display Screen



- 1. Remaining Battery Level.
- 2. Displays the remaining usage time when the power station is charging external devices. Displays the time required to fully recharge the power station from the current battery level. When the device has output and input at the same time, the display screen shows the required recharge time if the output power is larger, or the remaining usage time if the input power is larger.

3. Battery Level Bar

The battery level bar blinks in sequence when recharging the power station. The last grid of the battery level bar blinks when the power station is charging external devices.

4. System Warnings

- ERR88** : error code
- 8°** : temperature error. The icon will be solid if the temperature is too high or too low. Wait for the temperature to return to normal.
- OVERLOAD** : overload warning

💡 Check the warning prompts in DJI Home App or visit <https://s.dji.com/DJI-Power> to learn about the warning details and troubleshooting. Contact official support if the problem persists.

- 5. Fast Recharge mode
- 6. Normal

7. Wi-Fi Connection Status

Solid icon indicates a successful Wi-Fi connection. Blinking icon indicates that the Wi-Fi is not connected or unavailable.


8. USB-A Port

9. USB-C Port

10. AC output frequency

When the ac frequency of the power station differs from the frequency of the power grid (for example, when using the device in different regions), only recharging is supported and the power station cannot charge external devices. In this case, the screen will display an error code (ERR13 or ERR14). Press and hold the AC button for more than 10 seconds to switch the frequency and resume normal use.

11. SDC/SDC Lite Port

 : recharging the power station or charging external devices via the SDC/SDC Lite Port.

88.88 V : the voltage value when using the SDC/SDC Lite Port.

88.88 % : the battery level of the aircraft battery when charging the battery via the SDC/SDC Lite Port.

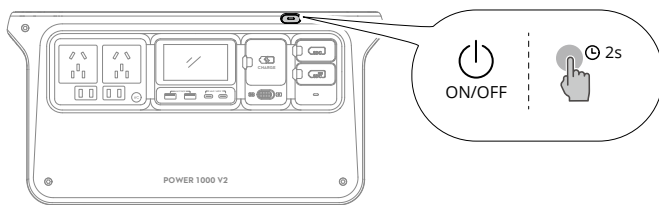
12. Input Power

13. Uninterruptible Power Supply (UPS)

14. Output Power

2 Basic Usage

2.1 Powering on/off



Power on/off: Press and hold the power button for at least two seconds.

Turn on/off the display screen: When the power station is powered on, press the power button once.

2.2 Connecting to the DJI Home App

1. Scan the QR code to download DJI Home App.




2. Enable Bluetooth and Wi-Fi on your phone, run DJI Home App and follow the instructions to connect the device.

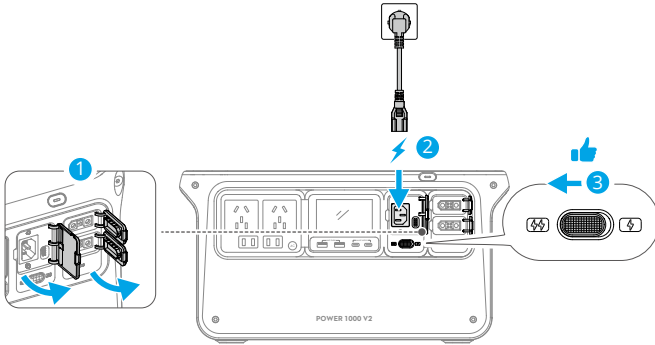
-
- 💡 • To check the Android and iOS operating system versions supported by the app, visit <https://www.dji.com/downloads/djiapp/dji-home>.
 - The interface and functions of the app may vary as the software version is updated. Actual user experience is based on the software version used.
-

2.3 AC Recharging

1. Open the port cover and connect the AC input port to an AC power outlet.
2. Toggle the recharge mode switch to select the recharge mode.


 **Fast Recharge mode:** The recharge power is larger and is suitable for daily recharge.

4 Standard Recharge mode: The recharge power is smaller and the operation noise is lower, which is suitable for recharging at night.

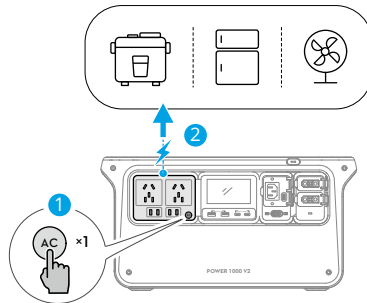


- **Super Recharging** can be enabled in DJI Home App. When enabled, a higher recharge power of approximately 1800 W can be achieved, reducing the time required to reach the defined recharge limit.



- Use the original AC power cable for recharging and avoid bending or pressing the cable. Ensure good ventilation during recharging. DO NOT place the device in high-temperature or confined space.
- Disconnect the AC power outlet when charging is complete.
- It is recommended to use Standard Recharge mode for an extended battery cell life.
- If the power station is recharged in Fast Recharge mode for five consecutive cycles, the power station will automatically switch to Standard Recharge mode after the sixth fast recharging for battery maintenance.
- When the temperature is abnormal in Fast Recharge mode, the temperature error icon  on the display screen blinks slowly and the actual recharge power may be lowered to ensure the battery cell life and safety.


2.4 AC Output



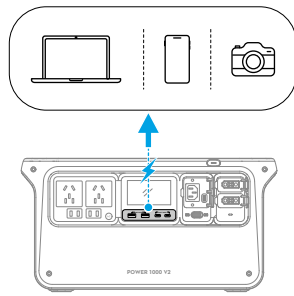
Connect the external device to an AC output port and press the AC button for AC power supply. The power station will beep once and the AC button will blink slowly.

AC output will automatically shut down if the power station is not powering any AC device for more than 30 minutes. When AC output is disabled, the power station will automatically shut down if it has no output or input for more than 60 minutes. The AC Timeout and the Device Timeout can be modified in DJI Home App.

Press and hold the AC button for a continuous AC power supply when connecting the power station to devices that operates intermittently such as a refrigerator. The power station will beep once and the AC button will show solid light.

 The internal electronic components have a waterproof coating. There may be a faint smell when using a large amount of power. The smell will dissipate naturally with daily use.

2.5 USB Output



Connect the external device to the USB-A or the USB-C ports for power supply.

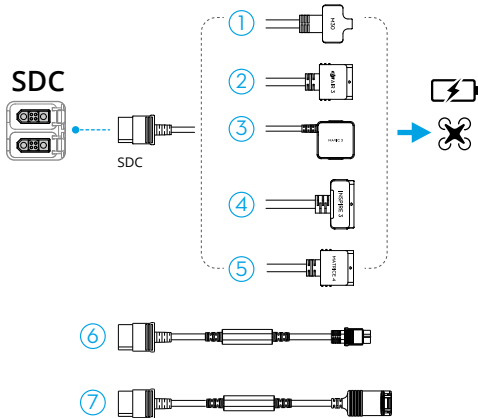
3 Accessories

💡 Watch the [tutorial videos](#) or read the [accessory manuals](#) to learn about product usage.

⚠️ Unless otherwise specified, the accessories need to be purchased separately.

3.1 SDC Output

The power station can be used with SDC cables to charge different devices via the SDC port.



- | | |
|--|---|
| 1. Matrice 30 Series Fast Charge Cable | 5. Matrice 4 Series Fast Charge Cable |
| 2. Air 3 Series Fast Charge Cable | 6. SDC to XT60 Power Cable (12 V) * |
| 3. Mavic 3 Series Fast Charge Cable | 7. SDC to Car Charger Plug Power Cable (12 V) * |
| 4. Inspire 3 Fast Charge Cable | |

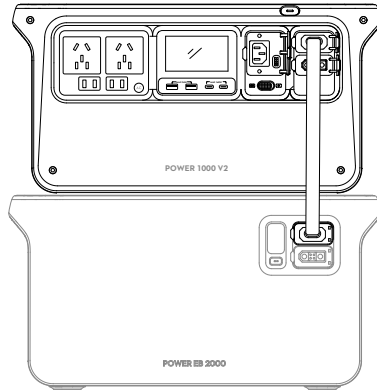
* Default output voltage: 13.6 V. Max output current: 10 A.

- ⚠️
- Make sure the external device is within the output specifications of the cable.
 - DO NOT directly connect to a lithium battery with an XT60 port using the SDC to XT60 power cable. Make sure to connect the power station to a balanced charger first.

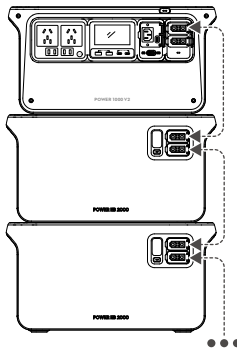
3.2 Expansion capacity

DJI Power Expansion Battery 2000 * can be connected to the power station to expand the battery capacity.

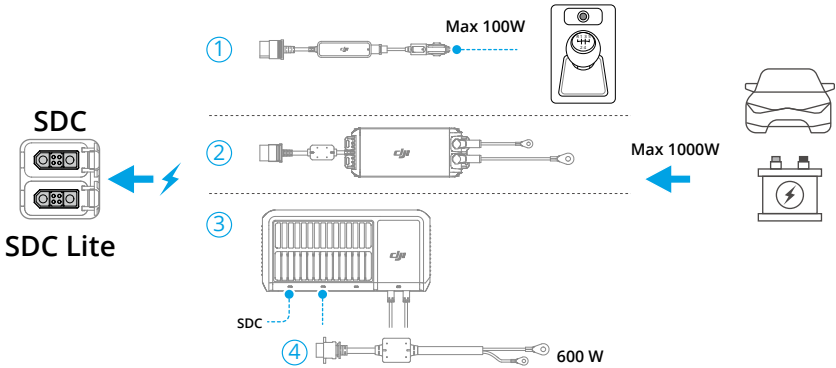
* Only supports connection to the SDC port



- To charge the expansion battery, connect it to the power station and charge the power station.
- The power station can connect up to five expansion batteries for use.



3.3 Car Scenario

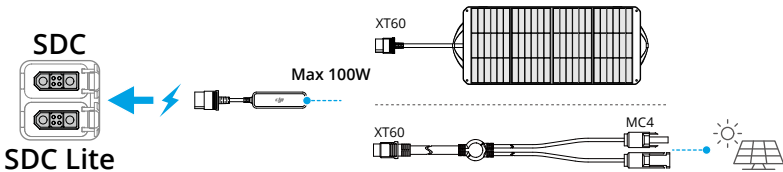


1. Car Power Outlet to SDC Power Adapter
2. 1kW Super Fast Car Charger *
3. 1.8kW Solar/Car Super Fast Charger *
4. 1.8kW Super Fast Charger 45A Car Charging Cable

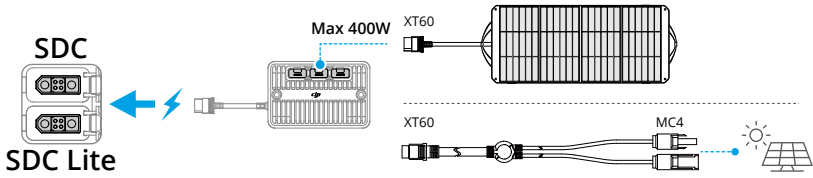
- ⚠ • Make sure the connected car power supply is within the specifications of the accessory. Otherwise, it may cause abnormal performance or even damage to the power station.
- Make sure that the power adapter is securely connected to the car power port and that the car engine is started before recharging.

3.4 Solar Power Scenario

Car Power Outlet to SDC Power Adapter

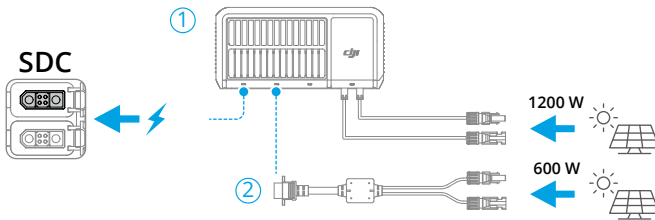


Solar Panel Adapter Module (MPPT)



Use the MC4 to XT60 solar adapter cable when connecting to solar panels with MC4 ports.

1.8kW Solar/Car Super Fast Charger



1. 1.8kW Solar/Car Super Fast Charger *

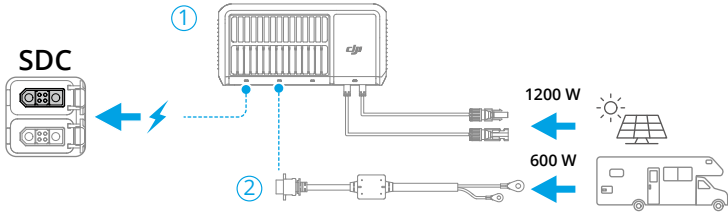
* Only supports connection to the SDC port

2. 1.8kW Super Fast Charger XT90 to MC4 Adapter Cable



- It is recommended to use officially authorized solar panels. DO NOT mix different types of solar panels. Make sure the connected solar panels are within the input specifications of the adapters. Otherwise, the devices may be damaged.
- Up to three solar panels can be connected to the adapter module and used in parallel (cannot be used in series).
- The Car Power Outlet to SDC Power Cable allows one solar panel to be connected for solar recharging.


3.5 Solar Power + RV Scenario



1. 1.8kW Solar/Car Super Fast Charger *
2. 1.8kW Super Fast Charger 45A Car Charging Cable

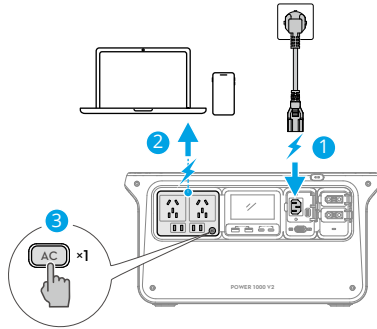
☀ When using multiple recharging methods simultaneously, solar recharging will take priority by default. Recharging sequence can be adjusted in DJI Home App: Tap at the upper right corner and tap **Energy Management**, enable **Custom Backup Reserve Level** and modify the **Backup Reserve Level**. When the battery level is below the backup reserve level, multiple recharging methods can be used simultaneously. When the current battery level is above the backup reserve level, only solar recharging is available.

4 Uninterruptible Power Supply (UPS)

Connect the power station to an AC power outlet, and connect an external device such as a computer to the power station. Press the AC button once, UPS is enabled if  appears on the display screen.

When the power grid is normal, the AC power outlet powers both the power station and the connected device.

In case of a sudden power outage, the power station can automatically switch to power supply status, ensuring that the connected device remains in normal operation.



- The power station only supports the basic UPS feature and does not support 0ms switching. DO NOT connect the power station to devices that require 0ms UPS, such as a medical equipment. Otherwise, it may cause the device to malfunction.
- This function is unavailable in some regions. Refer to local laws and regulations for more information.
- Due to restrictions by local laws and regulations in some countries and regions, the actual output power of the power station may be lowered in UPS mode.

5 Appendix

5.1 Specifications

Visit the following website for specifications.

<https://www.dji.com/power-1000-v2/specs>

5.2 Compatibility


Visit the following website to get the information on compatible products.

<https://www.dji.com/power-1000-v2/faq>

5.3 Firmware Update

Using DJI Home App

If the device is connected to DJI Home App, a prompt will appear in the app when new firmware is available. Follow the instructions in the app to update the firmware. An internet connection is required during the firmware update.

You can also update the firmware in DJI Home App: tap  at the top right corner, and tap **Firmware Update > Update**.

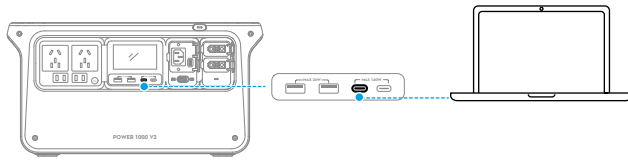


- Before updating, make sure the device has enough battery level and stable network connection.
 - Connect the accessories such as an expansion battery or a super fast charger to the power station to update the firmware together.
-

Using DJI Assistant 2 (Power Series)

Make sure that the computer is connected to the internet before the firmware update. Follow the instructions below to ensure a successful firmware update:

1. Power off the device, press and hold the AC button and the power button simultaneously, until the USB-C icon starts to blink on the display screen.
2. Connect the computer to the designated USB-C port as shown in the figure.



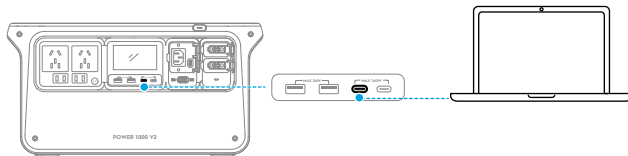
3. Launch DJI Assistant 2, select the product, and click the firmware update button on the left side.
4. Select the firmware version, carefully read the prompts in DJI Assistant 2, and click update. The firmware will be downloaded and uploaded to the device automatically.
5. The firmware will be updated automatically, and the display screen will show the update progress. Wait for processing to complete. The device will restart automatically after the firmware update is done.



- DO NOT power off the device or disconnect the device from the computer during a firmware update.
- If the firmware update fails, the display screen will show UPGD FAIL. Disconnect the device from the computer and the AC power outlet, press and hold the power button for five seconds to power off the device, and try again.

5.4 Log Export

1. Power off the device, press and hold the AC button and the power button simultaneously, until the USB-C icon starts to blink on the display screen.
2. Connect the computer to the designated USB-C port as shown in the figure.



3. Run DJI Assistant 2, click **Log Export** on the left side, select the log from the log list and save. Wait for the export to complete.
4. Restart the power station to resume normal use after completing log export.

5.5 Maintenance

1. If the power station needs to be stored for an extended period, it is recommended to discharge the power station to 60%. Storing with a high power level will shorten the battery cell life.
2. The power station should be stored in a cool and dry environment without direct sunlight at the specified storage temperature. DO NOT place the power station in water or where water may leak.
3. DO NOT store the power station for an extended period after fully discharging. Otherwise, the battery may over-discharge and cause irreparable damage to the battery cell.
4. Charge and discharge the power station once every 6 months to ensure the battery performance: discharge the power station to below 15%, power off for more than two hours, and then charge it to 100% in Standard Recharge mode.
5. Clean the ports with a clean, dry cloth if there is any noticeable build up. DO NOT clean the power station with alcohol or other flammable solvents.

5.6 Disposal

1. The power station contains hazardous chemicals, make sure to strictly follow local regulations regarding the disposal and recycling of batteries. DO NOT dispose of the power station in a regular waste disposal container.
2. Dispose of the power station in a suitable recycling container only after fully discharging it.
3. Power stations that are over-discharged, swollen, involved in a crash, come into contact with liquid, damaged, or leaky must be disposed of properly. DO NOT use any power station in such a condition in order to avoid damage or injury. Contact a professional battery disposal or recycling agent for further assistance.



Contact

DJI SUPPORT

This content is subject to change without notice.

Download the latest version from



<https://www.dji.com/power-1000-v2/downloads>

If you have any questions about this document, please contact DJI by sending a message to DocSupport@dji.com.

DJI is a trademark of DJI.

Copyright © 2025 DJI All Rights Reserved.