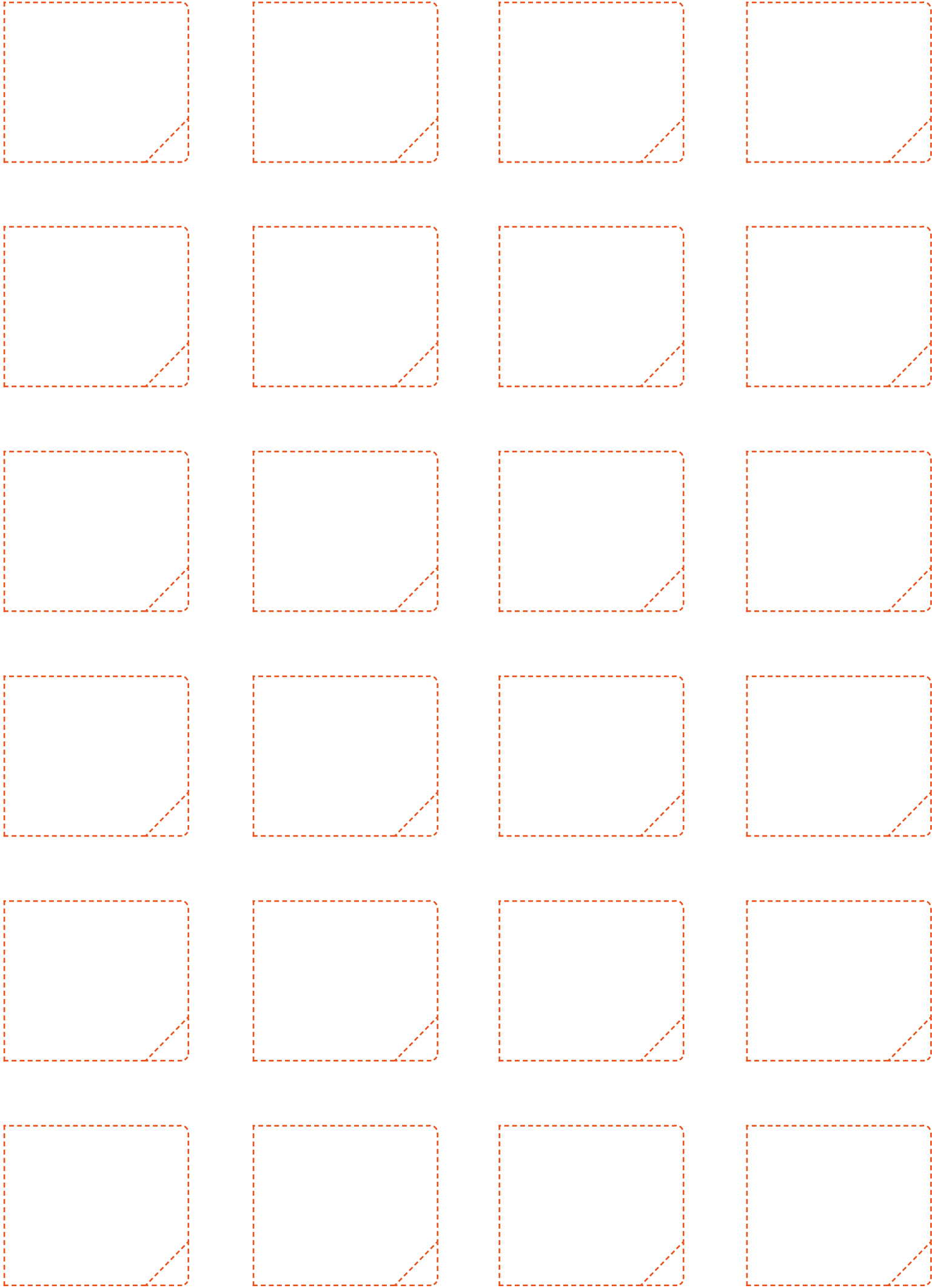
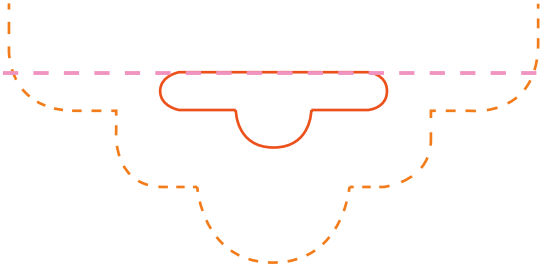


Size to be submitted (549 x 393 mm)—————→



**CADBURY DAIRY MILK CHOCOLATES**      **BEST BEFORE: 04/19**  
**INGREDIENTS:** Milk\*\*, sugar, cocoa butter, cocoa mass, vegetable fats (palm, shea), emulsifiers (E442, E476), flavourings. **May contain nuts.**  
MILK SOLIDS 20% MINIMUM, ACTUAL 23%. COCOA SOLIDS 20% MINIMUM.  
CONTAINS VEGETABLE FATS IN ADDITION TO COCOA BUTTER.  
*\*\*Equivalent of 426ml of fresh liquid milk in every 227g of milk chocolate.*