

Template CS 8-page Roll-fold

Open size: 411 x 105 mm
Closed size: 105 x 105 mm



You can use this file as an extra layer in your layout programme.
Do not forget to make our template invisible or to delete it before you save your final PDF, or JPG with high a resolution.

Format size to be submitted (417 x 111 mm)

Finished size + 3 mm cutting margin (bleed)
It is advised to let the background and all of the images run through to this edge. This ensures that your printing can be cut neatly and this prevents a white edge around your print.

Finished size (411 x 105 mm)

Your printing will be cut on these dimensions. This format will be the final size.

Safe zone (4 mm)

Please make sure you keep your important images and text 4 mm clear of the cutting edges. This prevents a possible cut in the important parts, or that the images are so close to the edge that it results in a sloppy design.

99 mm

411 mm

417 mm

102 mm

105 mm

105 mm

105 mm

111 mm

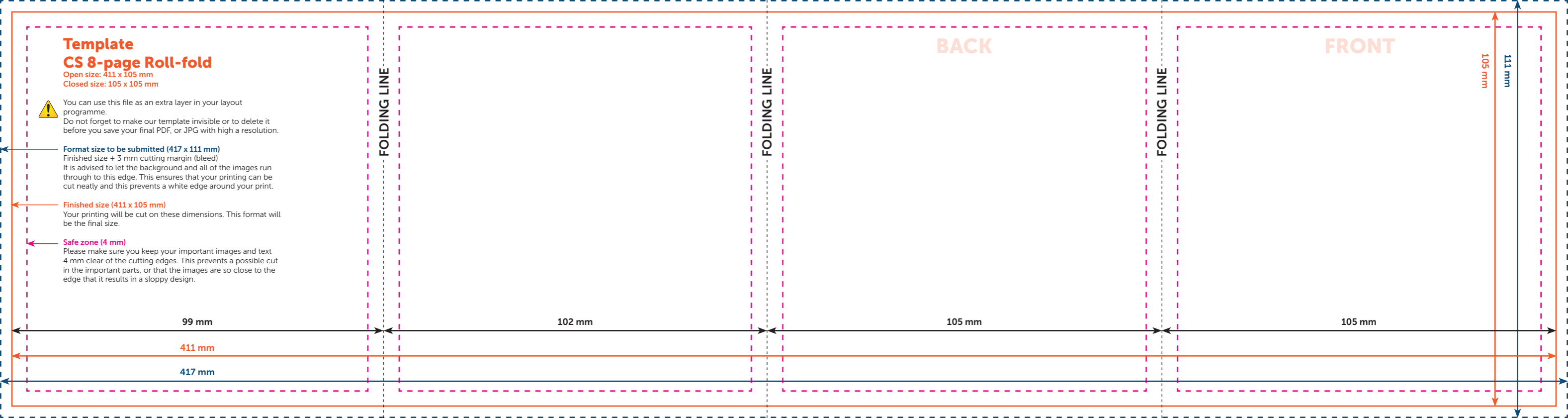
FOLDING LINE

FOLDING LINE

FOLDING LINE

BACK

FRONT



Template CS 8-page Roll-fold

Open size: 411 x 105 mm

Closed size: 105 x 105 mm



You can use this file as an extra layer in your layout programme.
Do not forget to make our template invisible or to delete it before you save your final PDF, or JPG with high a resolution.

Format size to be submitted (417 x 111 mm)

Finished size + 3 mm cutting margin (bleed)
It is advised to let the background and all of the images run through to this edge. This ensures that your printing can be cut neatly and this prevents a white edge around your print.

Finished size (411 x 105 mm)

Your printing will be cut on these dimensions. This format will be the final size.

Safe zone (4 mm)

Please make sure you keep your important images and text 4 mm clear of the cutting edges. This prevents a possible cut in the important parts, or that the images are so close to the edge that it results in a sloppy design.

INSIDE

FOLDING LINE

INSIDE

FOLDING LINE

INSIDE

FOLDING LINE

INSIDE

105 mm

105 mm

102 mm

99 mm

411 mm

417 mm

105 mm

111 mm