

STSU824

## The unisex side pocket hoodie sweatshirt

Brushed Sweatshirt

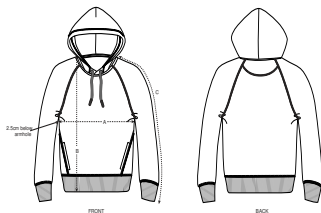
85% Organic ring-spun combed cotton, 15% Recycled polyester  
300 GSM

- Raglan sleeve
- Double layered hood in self fabric
- Round drawcords in matching body colour with metal tipping
- Metal eyelets
- Inside herringbone back neck tape
- Self fabric half moon at back neck
- Slanted side seams with pockets
- 1x1 rib at sleeve hem and bottom hem
- Flatlock topstitch on all seams

## MEDIUM FIT

XS    S    M    L    XL    XXL    XXXL\*    XXXXL\*

## Size guide



SIZES		XS	S	M	L	XL	XXL	XXXL	XXXXL
A	Half Chest	49	51.5	54	57	60	63	66	71
B	Body Length	65	68	72	74	76	78	80	82
C	Sleeve Length	69.5	75	79	80.5	82	83.5	83.5	83.5