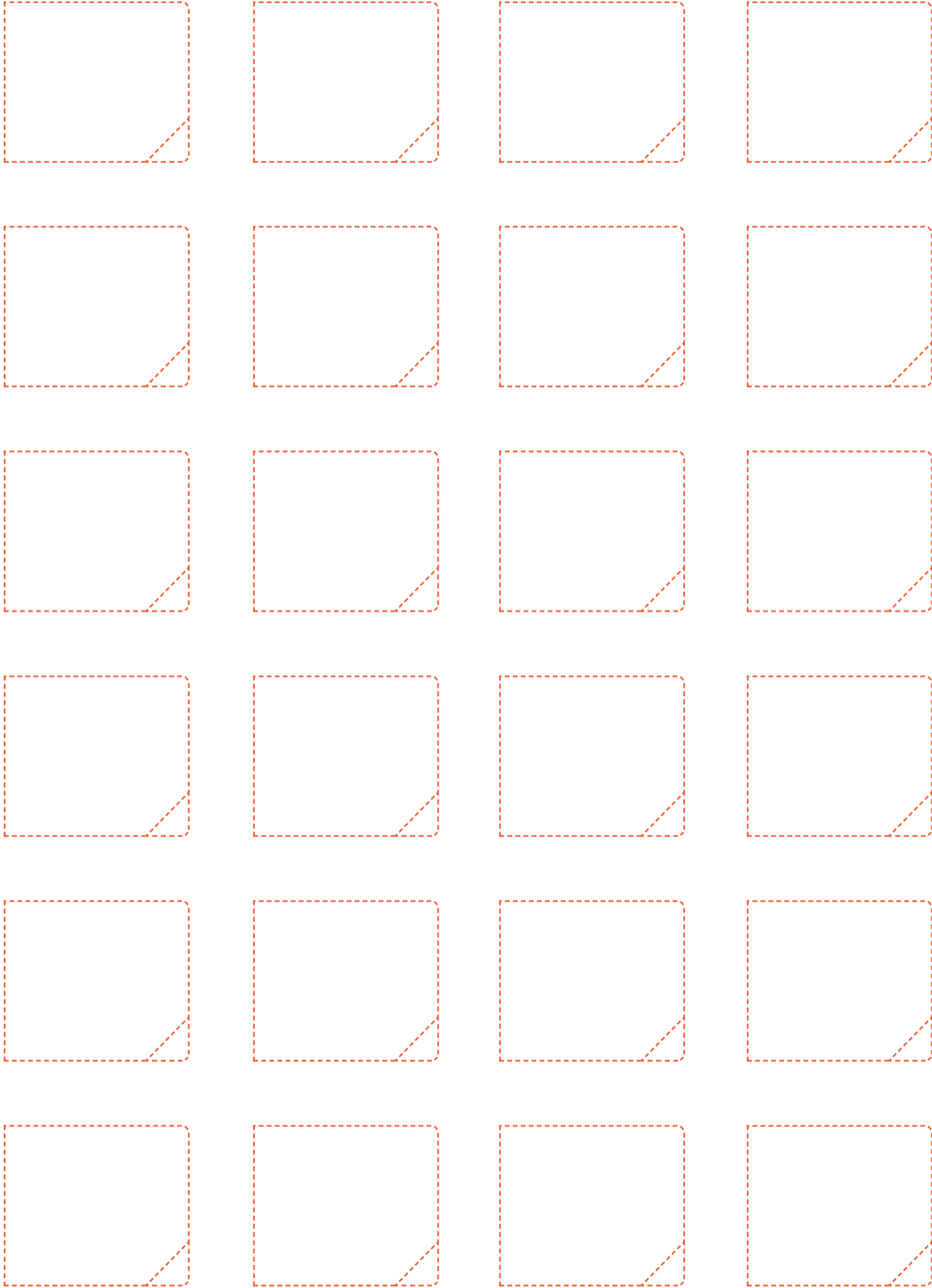
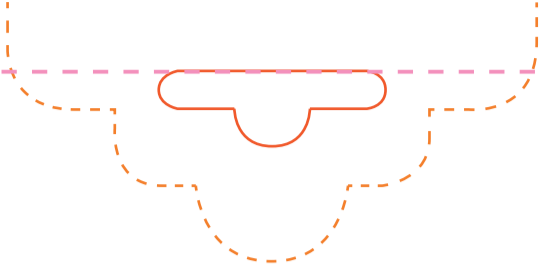


Size to be submitted (549 x 393 mm)



Cadbury Dairy Milk Chocolates **Best Before: 03/21**
INGREDIENTS: Milk**, sugar, cocoa butter, cocoa mass, vegetable fats (palm, shea), emulsifiers (E442, E476), flavourings. **May contain nuts.**
MILK SOLIDS 20% MINIMUM, ACTUAL 23%. COCOA SOLIDS 20% MINIMUM.
CONTAINS VEGETABLE FATS IN ADDITION TO COCOA BUTTER.
***Equivalent of 426ml of fresh liquid milk in every 227g of milk chocolate.*